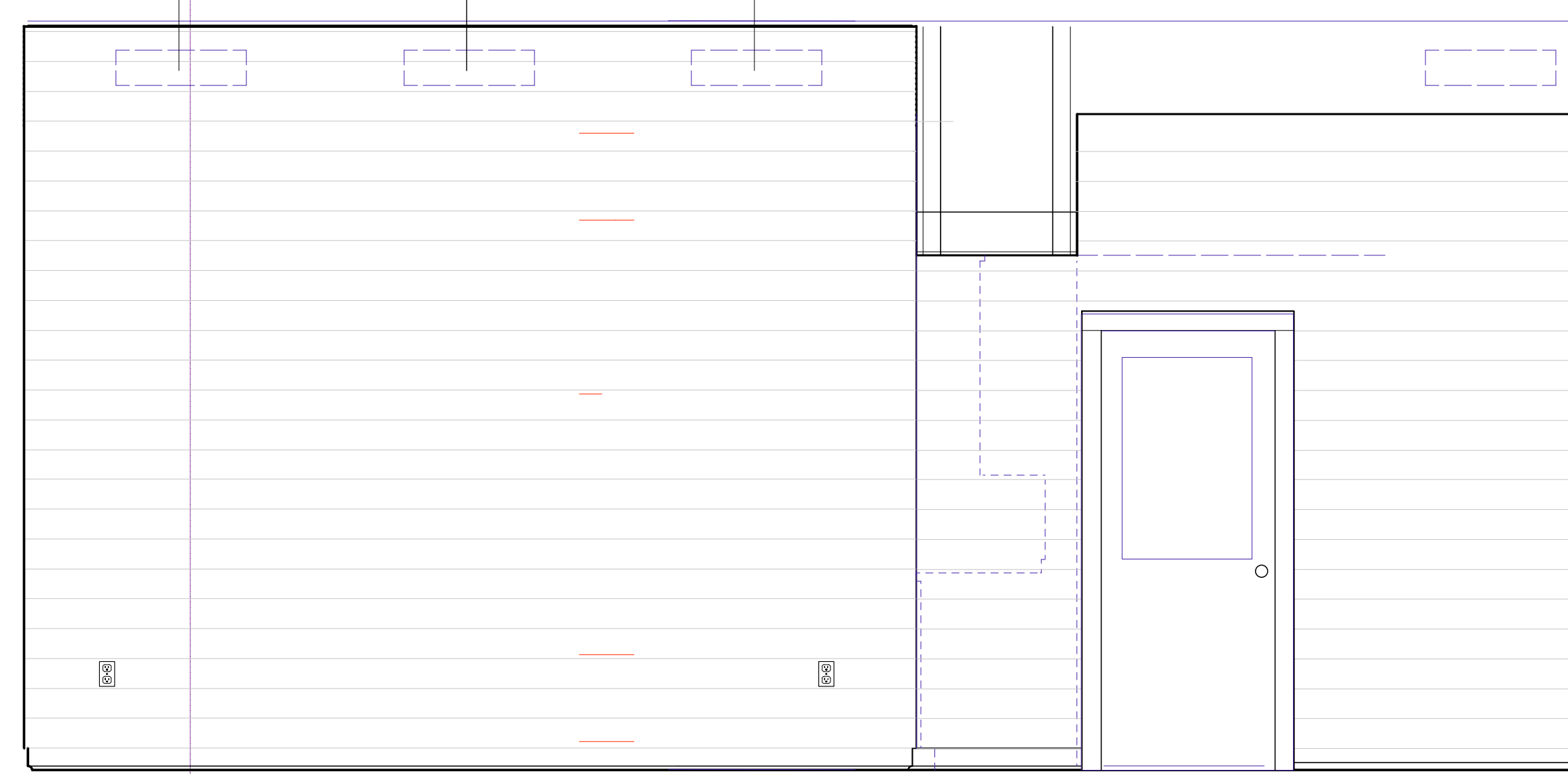
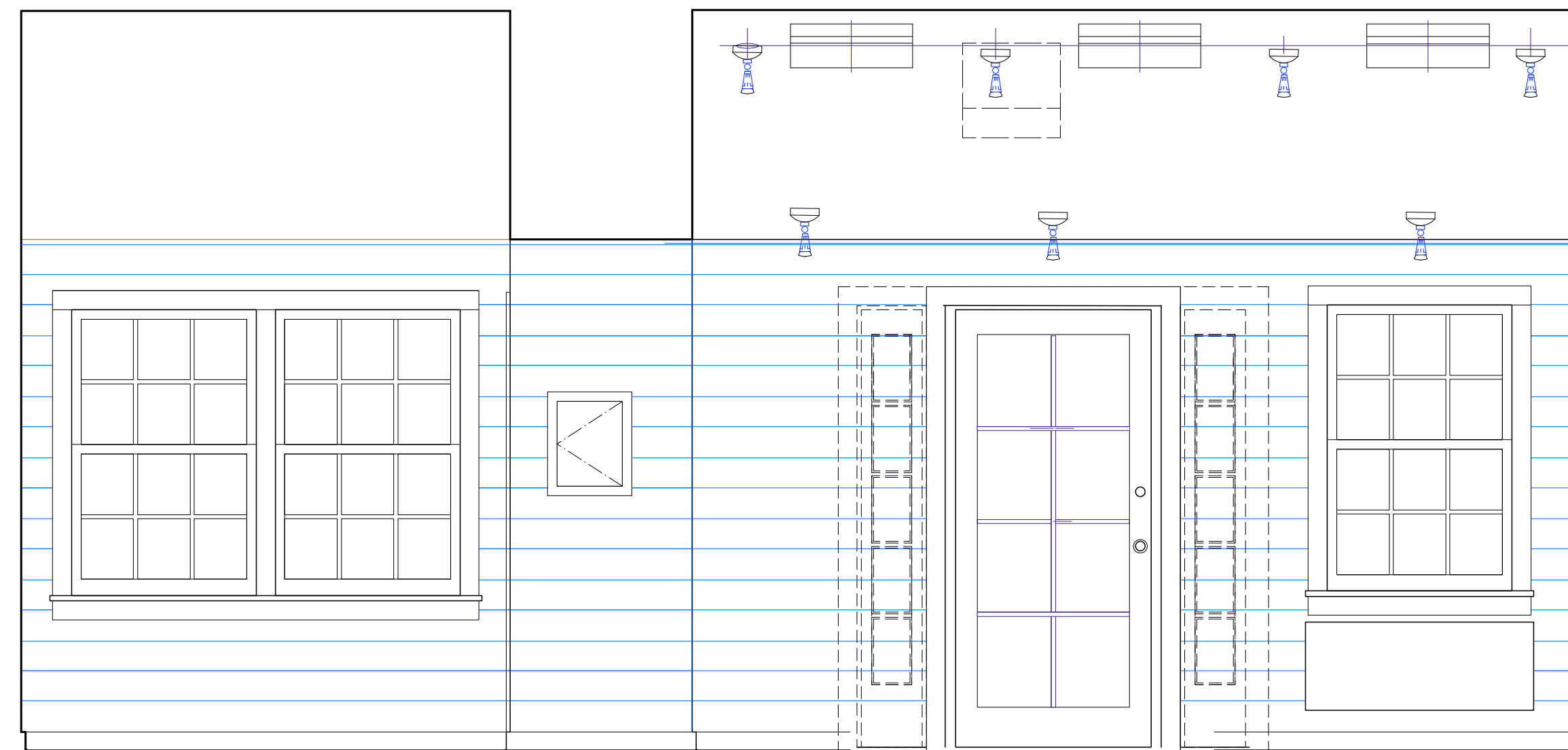


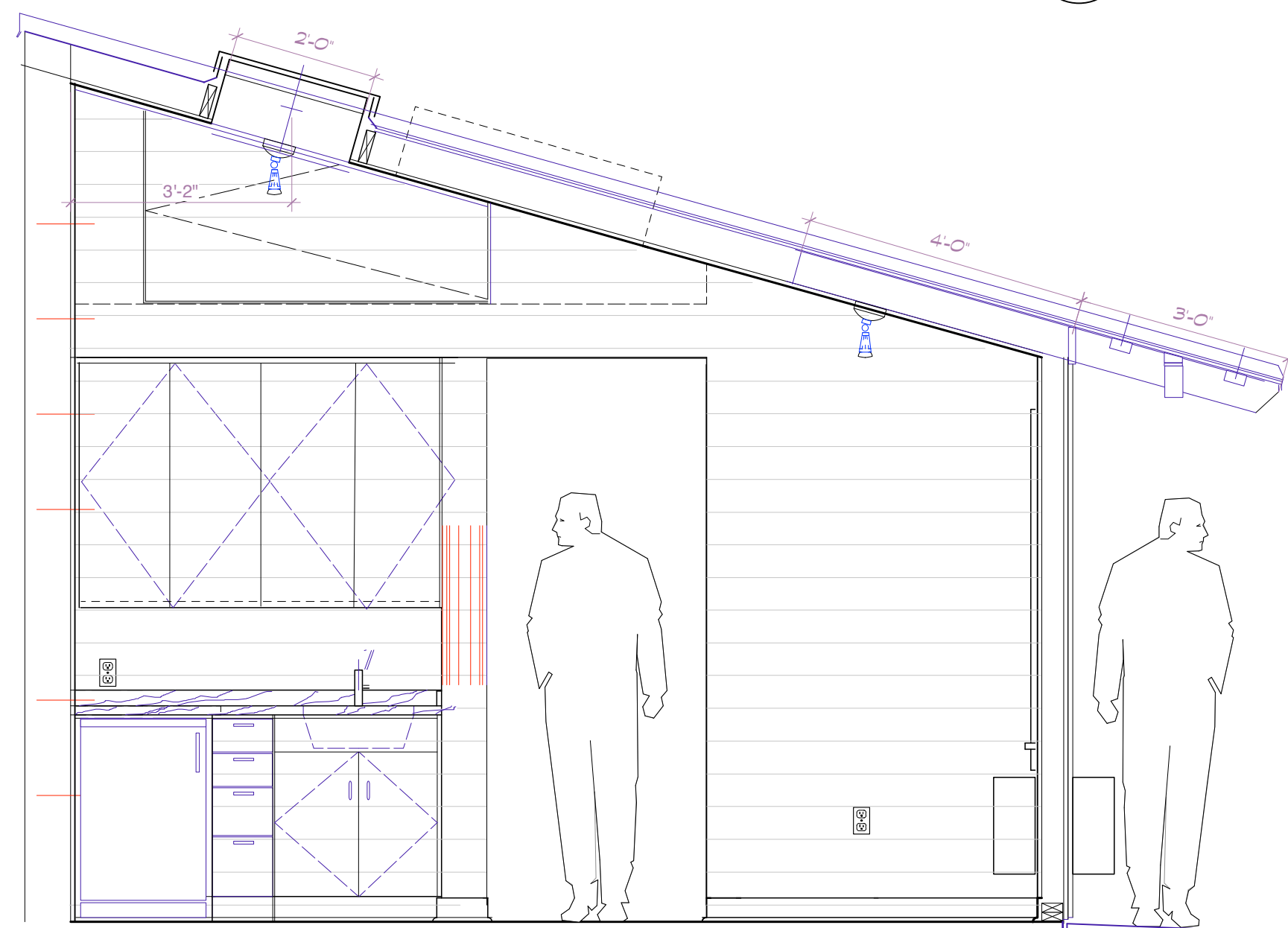
3 Elevations (Left Side)
Scale: 1/2" = 1'-0"



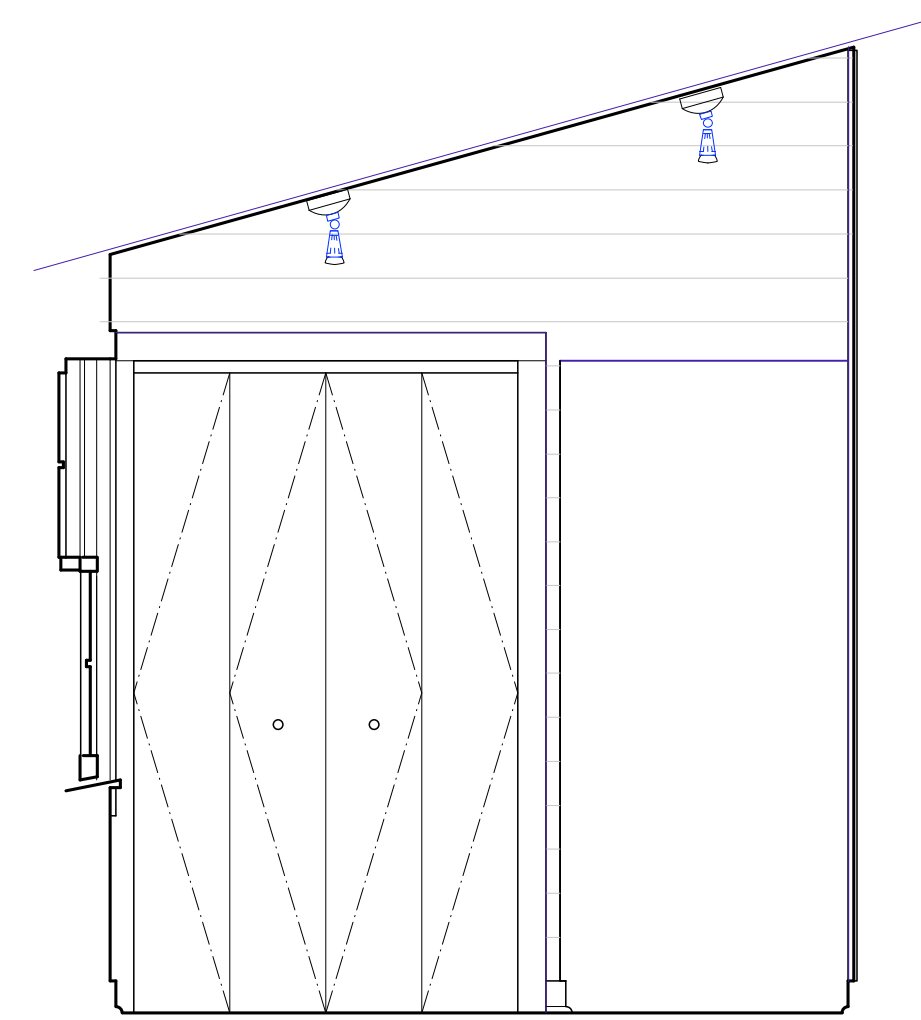
2 ELEVATION 'EAST' - LIVING - BEDROOM
Scale: 1/2" = 1'-0"



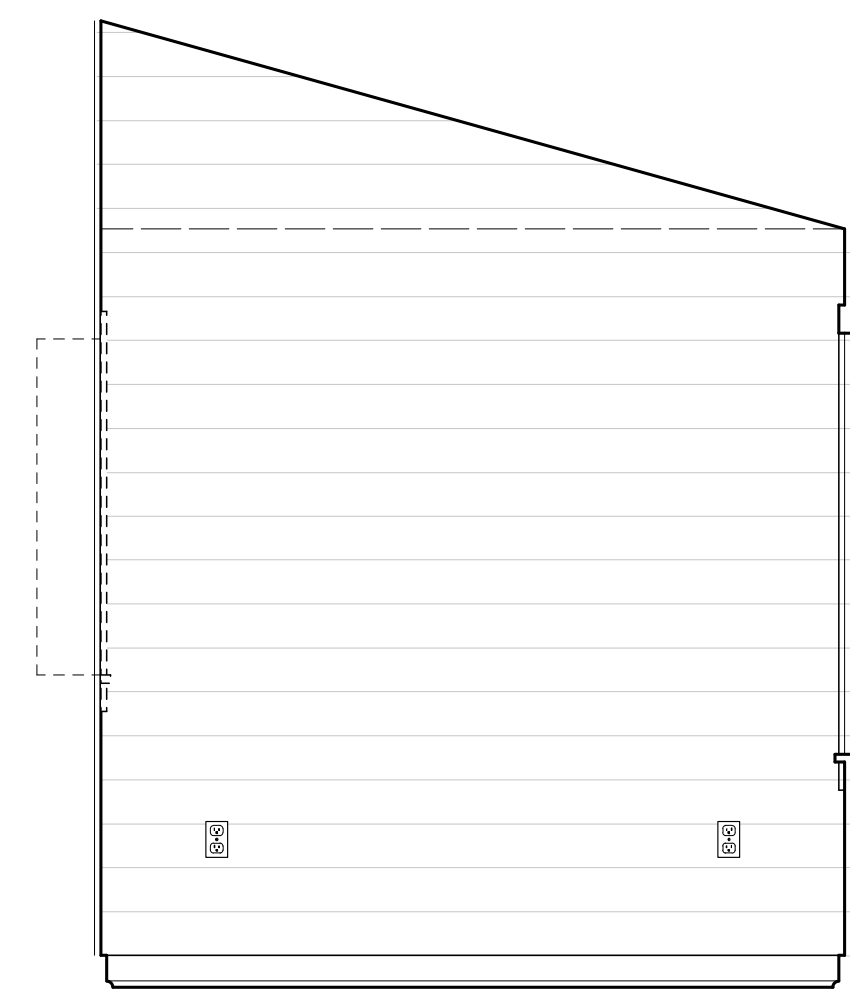
4 ELEVATION 'WEST' - BEDROOM - LIVING
Scale: 1/2" = 1'-0"



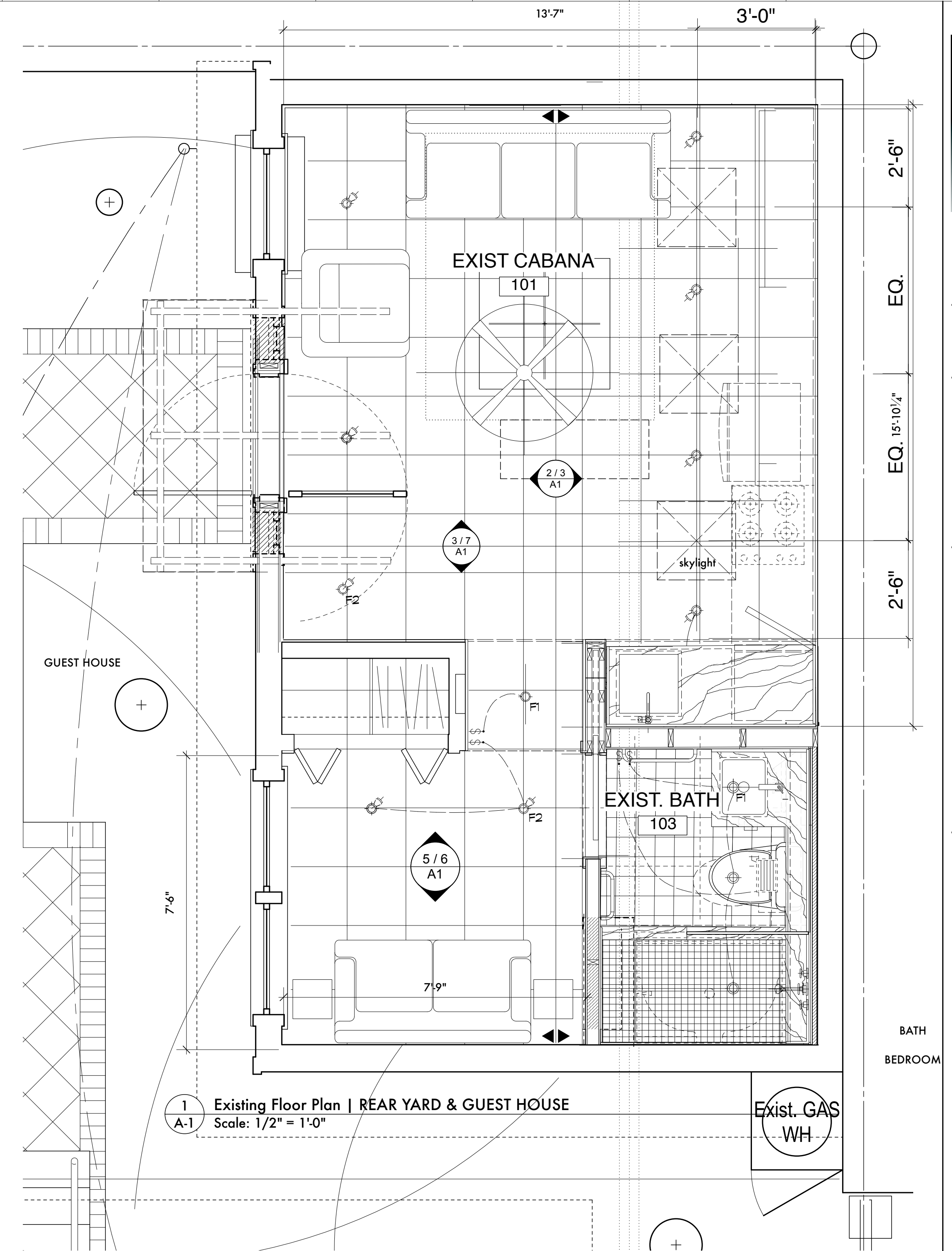
7 ELEV. - 'SOUTH' - LIVING
Scale: 1/2" = 1'-0"



6 ELEV. 'NORTH' - BEDRM
Scale: 1/2" = 1'-0"



5 ELEV. - 'SOUTH' - BEDRM
Scale: 1/2" = 1'-0"



1 Existing Floor Plan | REAR YARD & GUEST HOUSE
Scale: 1/2" = 1'-0"

NOTES:

NOTES:

- 1) DEMO - REMOVE ALL BATHROOM FIXTURES, COUNTERS, CABINET, SHELVING, REMOVE GYP BD. COVERING ON PLUMBING WALL, FLOOR TO CEILING AND SHOWER WALL ADJACENT TO MAIN HOUSE. EXISTING FLAT CEILING IN BATH TO REMAIN. REMOVE EXIST. WALL HUNG TOILET, SAVE FOR OWNER; RE-FRAME WALL WITH 1 1/2" STRAPPING OVER EXIST CMU WALL, VERIFY CONCEALMENT OF PLUMBING LINES; COORDINATE NEW WORK THIS AREA W/ OWNER AND ARCHITECT. REMOVE SHELVING NICHE IN BEDROOM, SHOWER WALL; CLOSE OPENING TO BEDROOM WITH MATCHING MATERIALS; (SEE SHT A-1.3 BATH DETAILS / ELEV.S.);
- 2) OPEN WALL IN PASSAGE HALL AND RE-FRAME WALL TO RECEIVE POCKET DOOR AND HARDWARE.

Project Title:

Renovation
7926
Freret St.

New Orleans
Louisiana

for
Mr. and Mrs.
Peter Ricchiuti

Drawing Title:

CABANA FLOOR
PLAN / ELEV'S

Date 13 JULY, 2022

Drawn

Revised

Drawing No.

A-1.2

of