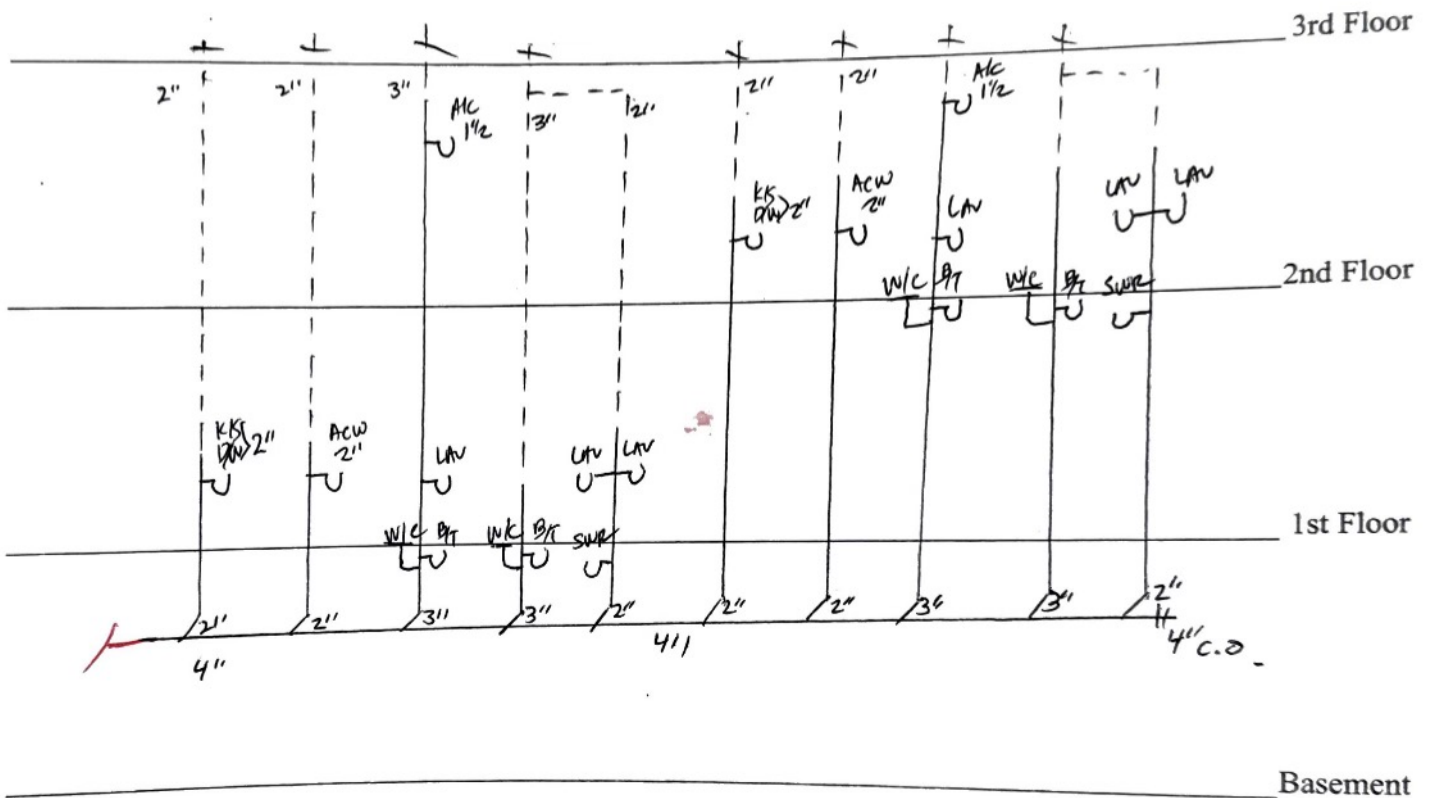


PLAN

On this page draw a sketch of the plumbing (not necessarily to scale), showing as nearly as possible the relative position of the fixtures. In elevation show the floor of the house, and upon which floor each fixture is placed. Specify the length, size, weight or quality and grade of all soil waste or ventilating pipes, and such description as is not clearly set forth in the preceding list. Plot plans or blue prints showing underground pipe lines and arrangement of fixtures shall be attached to and become part of the application, affording sufficient and definite information. New pipe, fittings, and fixtures must be shown in BLACK. Old pipe, fittings and fixtures must be shown in RED.

New 2 Story Dbl

2634, 36 Flood St.



PERMIT