

NEW METAL CLOSURE PANELS TO COVER EXISTING STUCCO. COLOR TO MATCH ORIGINAL STUCCO. PANELS TO RUN HORIZONTAL

NEW 22 GA. COPING WITH POSITIVE SLOPE TO EXISTING GUTTER. COLOR TO MATCH EXISTING STUCCO

NEW 20 GA CONTINUOUS CLEAT. SECURE TO TOP OF PARAPET AND OVERLAP STUCCO 2" VERTICALLY

PROVIDE 3/8" DOUBLE SIDED NORTON TAPE WITH STRUCTURAL SILICONE TOP AND BOTTOM (DOW 795 OR SIMILAR) ADHERED TO STAINLESS STEEL GUTTER

FASTENERS AT 12" O.C. INTO STRUCTURAL MEMBER (CONTRACTOR TO DETERMINE LOCATIONS AND TO NOTIFY ENGINEER UPON DETERMINING STRUCTURAL MEMBER SPACING)

NEW FLUID APPLIED WATERPROOFING APPLIED TO TOP OF PARAPET TO SEAL CLEAT ATTACHMENT.

ALUMINUM 1.5"x1.5"x0.0625" CONTINUOUS TUBE SPACER. COLOR TO MATCH STUCCO.

EXISTING STAINLESS STEEL GUTTER

SEE 2/A513 FOR COPING NOTES

SHIMS - ALIGN WITH TOP OF STUCCO
TOP OF BERRIDGE PANEL SYSTEM. SECURE INTO STRUCTURAL COMPONENT OF STUCCO. FASTENER SPACING PER BERRIDGE REQUIREMENTS

BERRIDGE IW-10A PANEL SYSTEM WITH HORIZONTAL JOINTS

NON-CURING BUTYL

SHIMS AT FASTNER LOCATIONS. PROVIDE PILOT HOLES FOR FASTENERS AND FILL HOLES WITH URETHANE SEALANT PRIOR TO INSTALLATION OF FASTENER

CONTINUOUS SUPPORT CLIP

COVER FLASHING

CONTINUOUS DRIP EDGE

SEALANT

EXISTING GUTTER

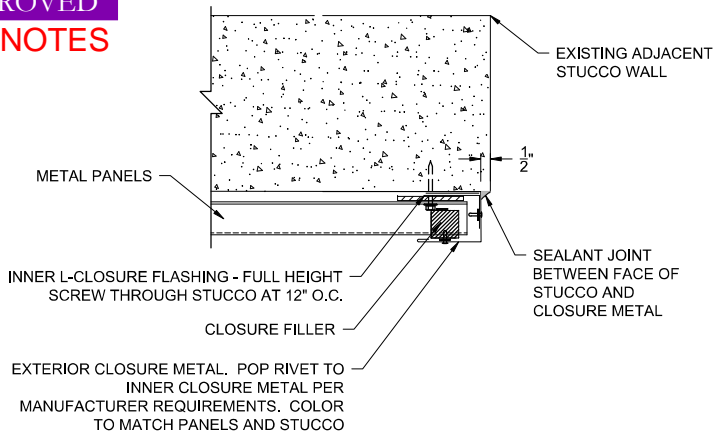
REPLACE LOUVER - 6/A513

1 ADJACENT BUILDING PARAPET- GUTTER TERMINATION A513 NTS

2 SECTION - PARAPET TO GUTTER - WEST END A513 NTS

3 SECTION - PARAPET TO GUTTER - EAST END A513 NTS

Metal coping cap and metal wall panels work on parapet of 933 Conti Street



5 METAL PANEL CLOSURE DETAIL A513 NTS

REMOVE AND REINSTALL 6" OF EXISTING CEMENT BOARD STUCCO ALL THE WAY AROUND THE EXISTING LOUVER. REMOVE STUCCO SYSTEM DOWN TO THE FLUID APPLIED WATERPROOFING. PROVIDE PROPER SPLICE OF MESH AND FINISH COAT AT REINSTALLATION

NEW 24 GA. PREFINISHED SHEET METAL HEAD FLASHING. STRIP INTO FLUID APPLIED WATERPROOFING

ENSURE FLUID APPLIED WATERPROOFING HAS WRAPPED INTO THE OPENING FULLY AND REPAIR ANY DAMAGE

EXISTING LOUVER SUPPORT FRAMING

PROVIDE NEW J-METAL OR L-METAL OVER END OF EXTERIOR SHEATHING AND STRIP INTO FLUID APPLIED WATERPROOFING

EXISTING ADJACENT BUILDING STUCCO

NEW SEALANT JOINT BETWEEN L-METAL AND EXISTING STUCCO

PROVIDE PERIMETER SEALANT JOINT BETWEEN FACE OF LOUVER AND STUCCO/FLASHINGS

NEW RUSKIN EME3625 LOUVER WITH INTEGRAL MOUNTING FLANGES. SIZE TO

EXISTING CEMENT BOARD STUCCO TO BE REMOVED AND REPLACED. REMOVE DOWN TO FLUID APPLIED WATERPROOFING

PROVIDE FLUID APPLIED WATERPROOFING OVER SEALANT JOINT AND LAP ONTO STUCCO

EXTERIOR SEALANT JOINT WITH BACKER ROD. SEAL BETWEEN FACE OF STUCCO AND J-MOLD - PROVIDE WEEP AT BOTTOM TO ALLOW ANY MOISTURE COLLECTING BETWEEN THE TWO SEALANT JOINTS TO DRAIN OUT THE PRECAST SILL FLASHING

Work at neighboring building

INSTALL LOUVER BY BEDDING FLANGE IN FULL BED OF SEALANT. STRIP IN FLANGE PER FLUID APPLIED WATERPROOFING MANUFACTURER'S TYPICAL FLANGED WINDOW DETAILS.

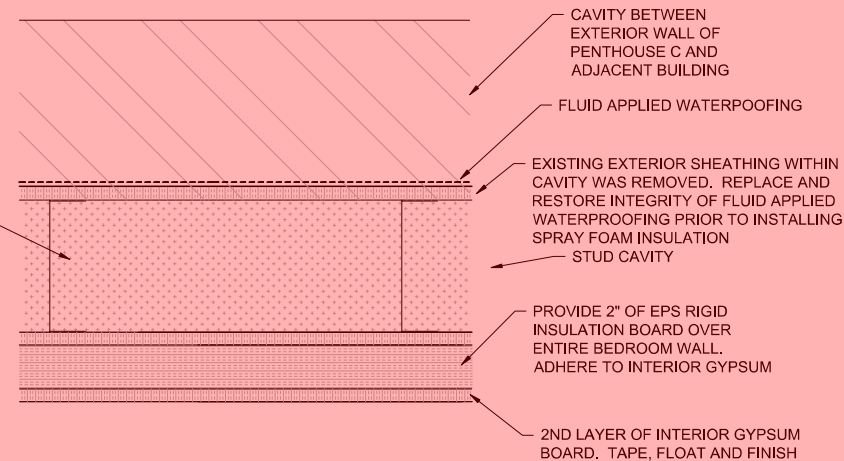
NOTE: JAMB AND SILL DETAILS SIMILAR EXCEPT NO SEPARATE HEAD FLASHING

6 REPLACEMENT LOUVER HEAD DETAIL A513 NTS

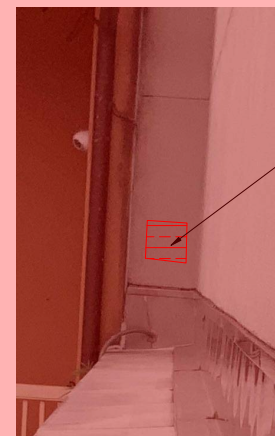
7 PLAN VIEW - REPLACEMENT TERMINATION DETAIL A513 NTS

EXISTING CAVITY BETWEEN PENTHOUSE C AND ADJACENT BUILDING
EXTERIOR SHEATHING WITHIN CAVITY WAS REMOVED. REPLACE AND RESTORE INTEGRITY OF FLUID APPLIED WATERPROOFING
NEW CLOSURE WALL - A5.12
ADJACENT BUILDING STUCCO WALL

REMOVE EXISTING BATT INSULATION FROM STUD CAVITY AND FILL FROM FLOOR TO STRUCTURAL DECK ABOVE WITH CLOSED CELL SPRAY INSULATION. EXTEND FROM WEST END WALL TO THE EAST SIDE OF THE EXTERIOR WALL OF THE BEDROOM

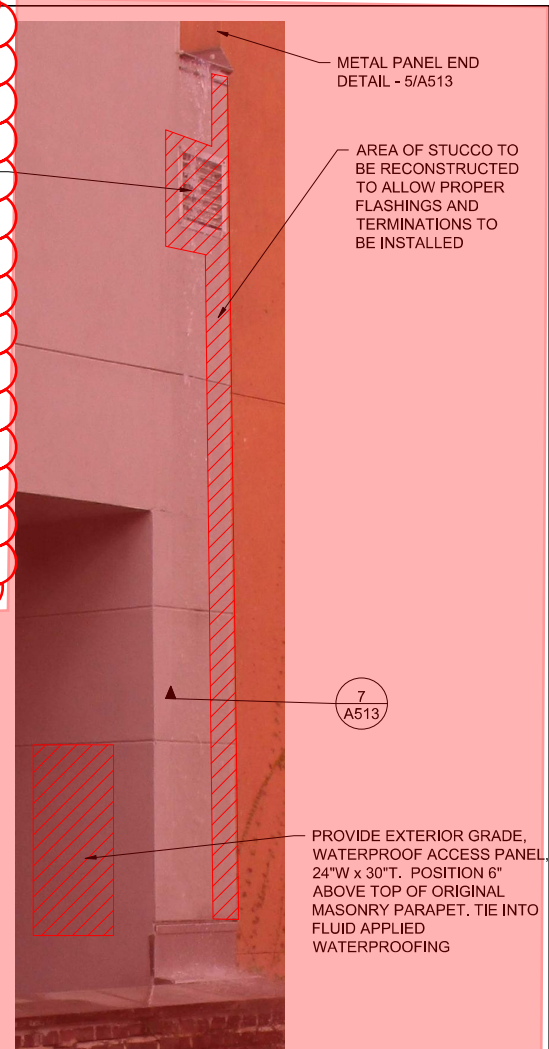


9 PLAN VIEW OF CAVITY WALL RESTORATION AT PENTHOUSE C A513 NTS



PROVIDE NEW 6" SQUARE LOUVER APPROXIMATELY 8 INCHES ABOVE TOP OF COUNTERFLASHING TO PROVIDE CROSS FLOW IN CAVITY

10 LOCATION OF NEW LOUVER-EAST CAVITY END WALL A513 NTS



7 A513

AREA OF STUCCO TO BE RECONSTRUCTED TO ALLOW PROPER FLASHINGS AND TERMINATIONS TO BE INSTALLED

4 PHOTO - EAST ELEVATION MODIFICATIONS A513 NTS

NO.	DATE	REVISION
	06-20-22	FOR PRICING

ISSUED FOR PRICING		WAX MUSEUM CONDOMINIUMS 917 CONTI STREET NEW ORLEANS, LA 70002
REPAIR DETAILS		
A5.13		

MOSAIC ENGINEERING & CONSULTING 274 UNION BOULEVARD, SUITE 450 LAKEWOOD, COLORADO 80226		PROFESSIONAL SEAL DESIGNED LGZ DRAWN LGZ CHECKED MJM APPROVED LGZ DATE 06-10-2022 PROJECT NO. 04211029-02 CADD FILE SCALE
---	--	--