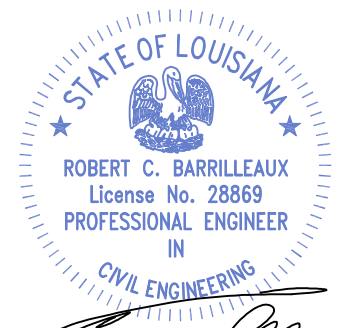
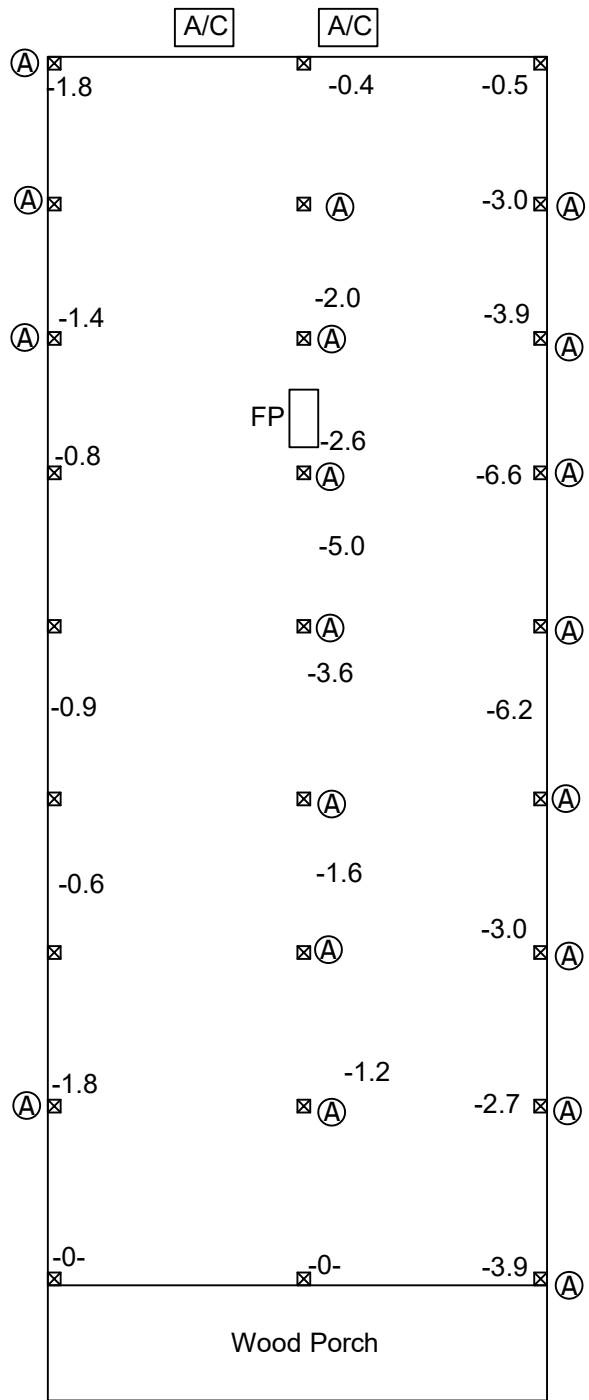


Legend	
Pier	☒
Adjust Pier:	Ⓐ
Elevation (in):	-0.8



Robert C. Barrilleaux
11/10/22

Notes:

- 1) Home has a wood framed foundation and has experienced settlement. Home is to be leveled by adjusting piers as shown and will undergo an approximately 6.6" lift to bring home back to level.
- 2) Piers shall be adjusted by addition of 3000 psi precast concrete or steel shims with non-shrink grout around them.
- 3) Measurements for basis of design provided by Davie Shoring, including elevations, sill/pier location, and house measurements. If pier location or other features are different than plan, engineer is to be contacted to modify design as needed.
- 4) Shoring is planned to be completed with:

Adjusted Piers: 19

Pier Placement Shoring Plan
Lift Company: Davie Shoring, Inc.

2109-11 Mandeville Street
New Orleans, LA



Robert Barrilleaux & Associates, Inc.
Engineers - Land Surveyors - Environmental Consultants
ph: (985)-542-0391 fax: (985)-542-6515
42333 Deluxe Plaza Suite 8 Hammond, LA
Engineer - Robert C. Barrilleaux, PE # 28869

Date: 11/08/2022	Scale: 1" = 10'
Drawn by: JQ	Revised: