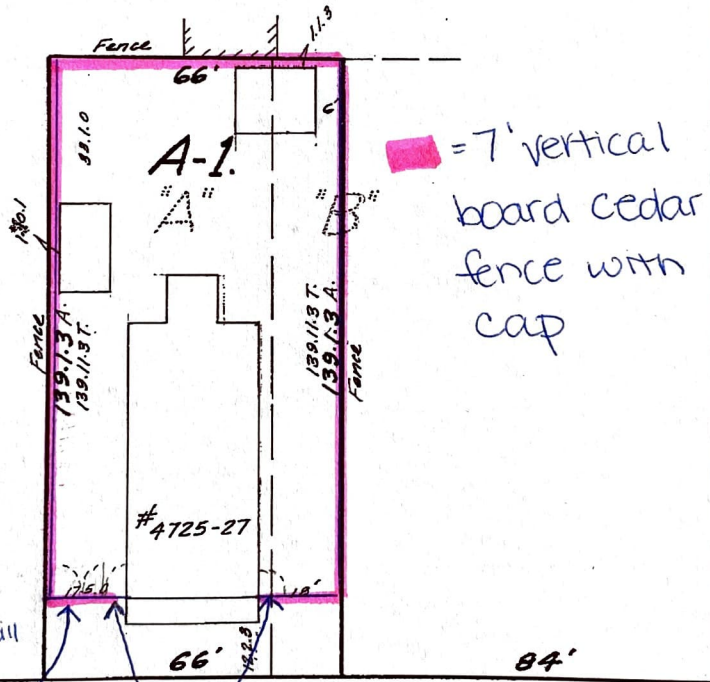


Sq. No. 232
3 RD DISTRICT

BURGUNDY ST. SIDE

SISTERS ST. SIDE

JOURDAN AVE.



7' vertical board cedar fence with cap

*The (2) 5' vehicular gates will be supported by welded metal frames + attached to sch. 40 galvanized posts.

10' vehicular gate

Pedestrian gates

New Orleans, La.
Aug. 5, 1974
Survey certified correct. Made at the request of Allen R. Crane
Gilbert, Kelly & Couturie, Inc., Surveying & Engineering