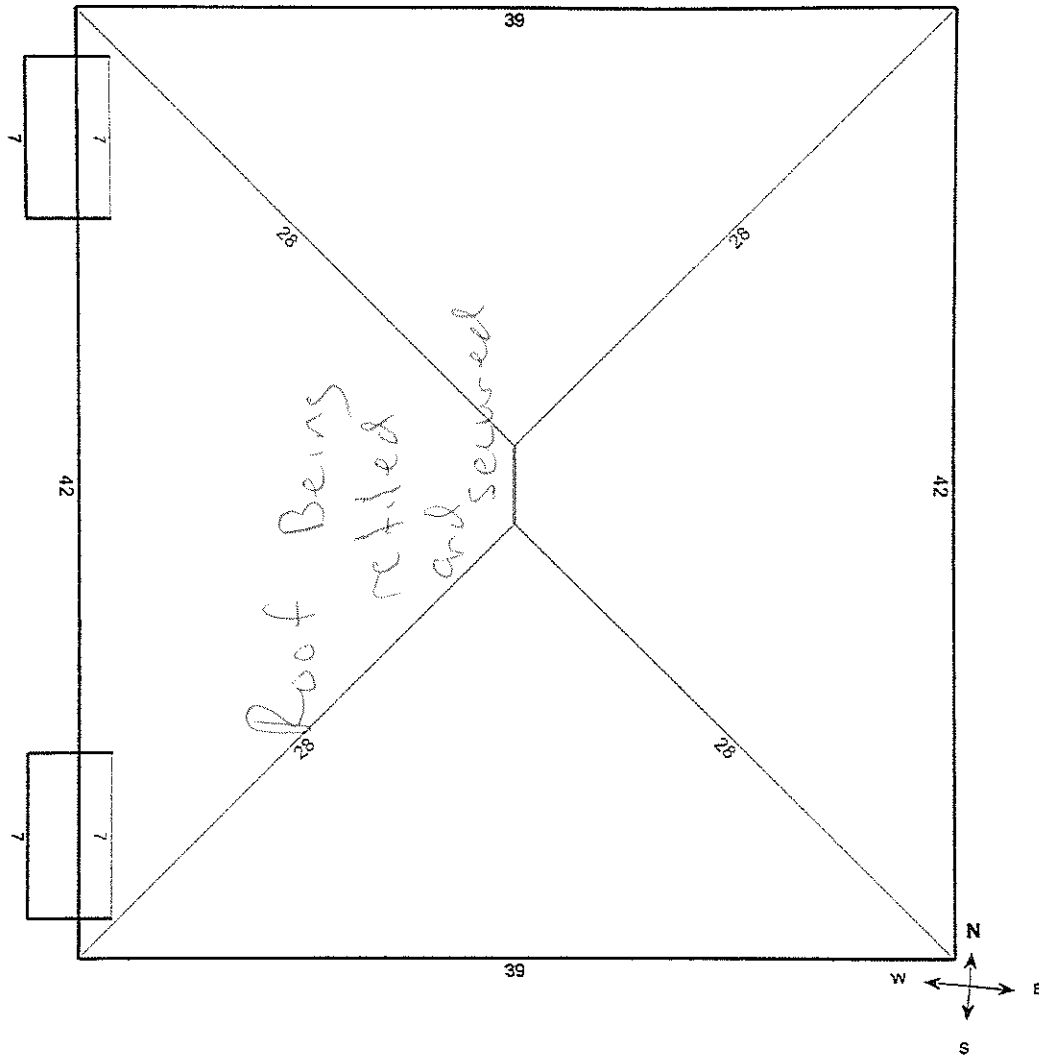


# LENGTH DIAGRAM

**Total Line Lengths:**

 Ridges = 4 ft  
 Hips = 113 ft

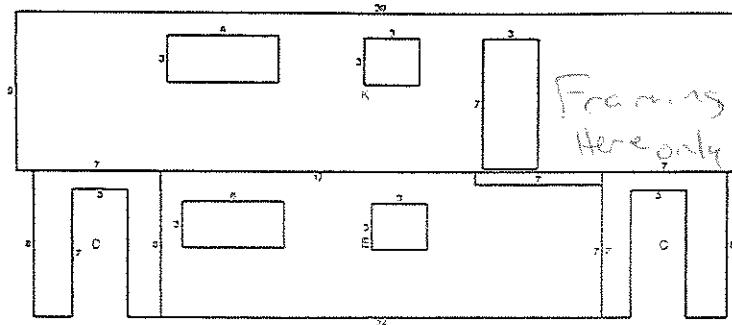
 Valleys = 0 ft  
 Rakes = 0 ft  
 Eaves = 192 ft

 Flashing = 15 ft  
 Step flashing = 0 ft  
 Parapets = 0 ft


**Note: This diagram contains segment lengths (rounded to the nearest whole number) over 5.0 Feet. In some cases, segment labels have been removed for readability. Plus signs preface some numbers to avoid confusion when rotated (e.g. +6 and +9).**

## WEST ELEVATION DIAGRAM

Top of Walls = 77 ft  
Bottom of Walls = 52 ft



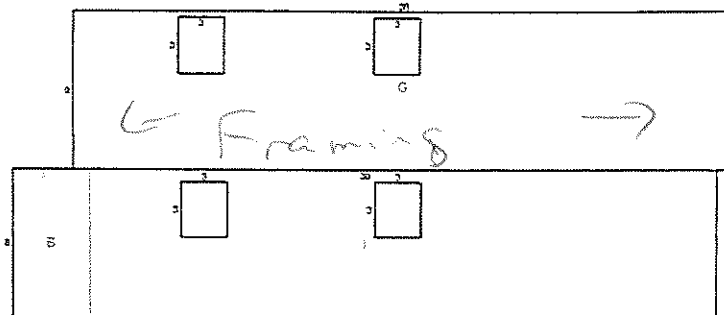
### West Elevation Details

Wall	Wall Area	Window & Door Area	Window & Door Perimeter	Window & Door Count
C	33.3	21.0	20.0	1
D	33.9	21.0	20.0	1
E	165.9	21.3	27.0	2
K	291.0	43.5	48.0	3
<b>Total</b>	<b>524.1 sq ft</b>	<b>106.8 sq ft</b>	<b>115 ft</b>	<b>7</b>

**Note:** On-site verification of yellow shaded areas is needed. Details are on the Wall Report Summary Page. This diagram shows segment lengths rounded to the nearest whole number. The window & door and wall area in square feet (rounded to the nearest tenth) is based on the actual (non-rounded) value of each segment length.

## SOUTH ELEVATION DIAGRAM

Top of Walls = 79 ft  
Bottom of Walls = 43 ft



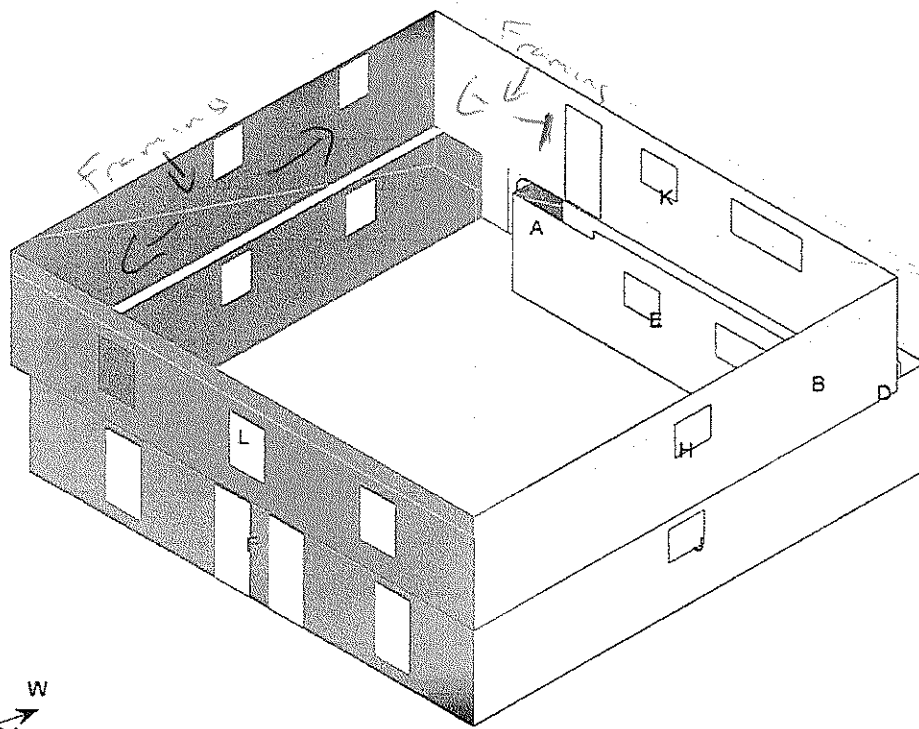
### South Elevation Details

Wall	Wall Area	Window & Door Area	Window & Door Perimeter	Window & Door Count
B	33.5	0.0	0.0	0
G	289.8	15.0	22.0	2
I	290.8	15.0	22.0	2
<b>Total</b>	<b>614.1 sq ft</b>	<b>30 sq ft</b>	<b>44 ft</b>	<b>4</b>

**Note:** On-site verification of yellow shaded areas is needed. Details are on the Wall Report Summary Page. This diagram shows segment lengths rounded to the nearest whole number. The window & door and wall area in square feet (rounded to the nearest tenth) is based on the actual (non-rounded) value of each segment length.

## ALTERNATE WALL AREA

Total Wall Area = 2289.4 sq ft, with 12 facets.  
Total Wall Area with Windows and Doors = 2,552 sq ft

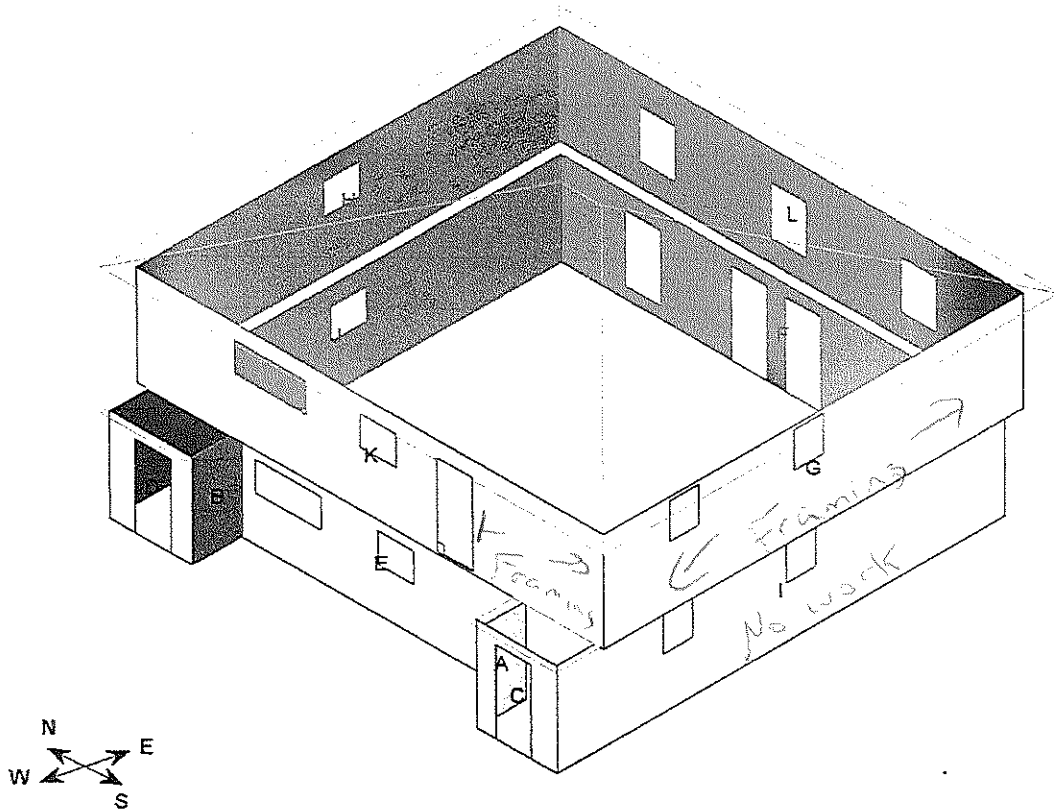


### Wall Area by Direction

<u>North</u>	<u>East</u>	<u>South</u>	<u>West</u>
A - 30.6 sq ft H - 297.3 sq ft J - 298.3 sq ft	F - 226.4 sq ft L - 298.5 sq ft	B - 33.5 sq ft G - 289.8 sq ft I - 290.8 sq ft	C - 33.3 sq ft D - 33.9 sq ft E - 165.9 sq ft K - 291 sq ft
<b>626.2 sq ft</b>	<b>524.9 sq ft</b>	<b>614.1 sq ft</b>	<b>524.1 sq ft</b>

## WALL AREA DIAGRAM

Total Wall Area = 2289.4 sq ft, with 12 facets.  
Total Wall Area with Windows and Doors = 2,552 sq ft



### Wall Area by Direction

<u>North</u>	<u>East</u>	<u>South</u>	<u>West</u>
A - 30.6 sq ft H - 297.3 sq ft J - 298.3 sq ft	F - 226.4 sq ft L - 298.5 sq ft	B - 33.5 sq ft G - 289.8 sq ft I - 290.8 sq ft	C - 33.3 sq ft D - 33.9 sq ft E - 165.9 sq ft K - 291 sq ft
<b>626.2 sq ft</b>	<b>524.9 sq ft</b>	<b>614.1 sq ft</b>	<b>524.1 sq ft</b>