



1216-1218-1220-1222 MARENGO ST., NEW ORLEANS, LA 70115

FRONT ELEVATION (MARENGO STREET SIDE)

SCALE: 1/4" = 1'-0"



1216-1218-1220-1222 MARENGO ST., NEW ORLEANS, LA 70115

RIGHT SIDE ELEVATION

SCALE: 1/4" = 1'-0"

MULTI UNIT HOUSE
1216-1218-1220-1222 MARENGO ST., NEW ORLEANS, LA 70115

ELEVATIONS

DESIGN

STRUCTURAL DESIGN

APPROVED BY

DRAWN BY MLC

DATE

10-10-22

SCALE:

SHOWN

SHEET No.

A2 of 3



1224 MARENGO ST., NEW ORLEANS, LA 70115

FRONT ELEVATION (MARENGO STREET SIDE)

SCALE: 1/4" = 1'-0"



1224 MARENGO ST., NEW ORLEANS, LA 70115

SIDE ELEVATION (PERRIER STREET SIDE)

SCALE: 1/4" = 1'-0"

MULTI UNIT HOUSE

1224 MARENGO ST., NEW ORLEANS, LA 70115

ELEVATIONS

DESIGN

STRUCTURAL DESIGN

APPROVED BY

DRAWN BY **MLC**

DATE

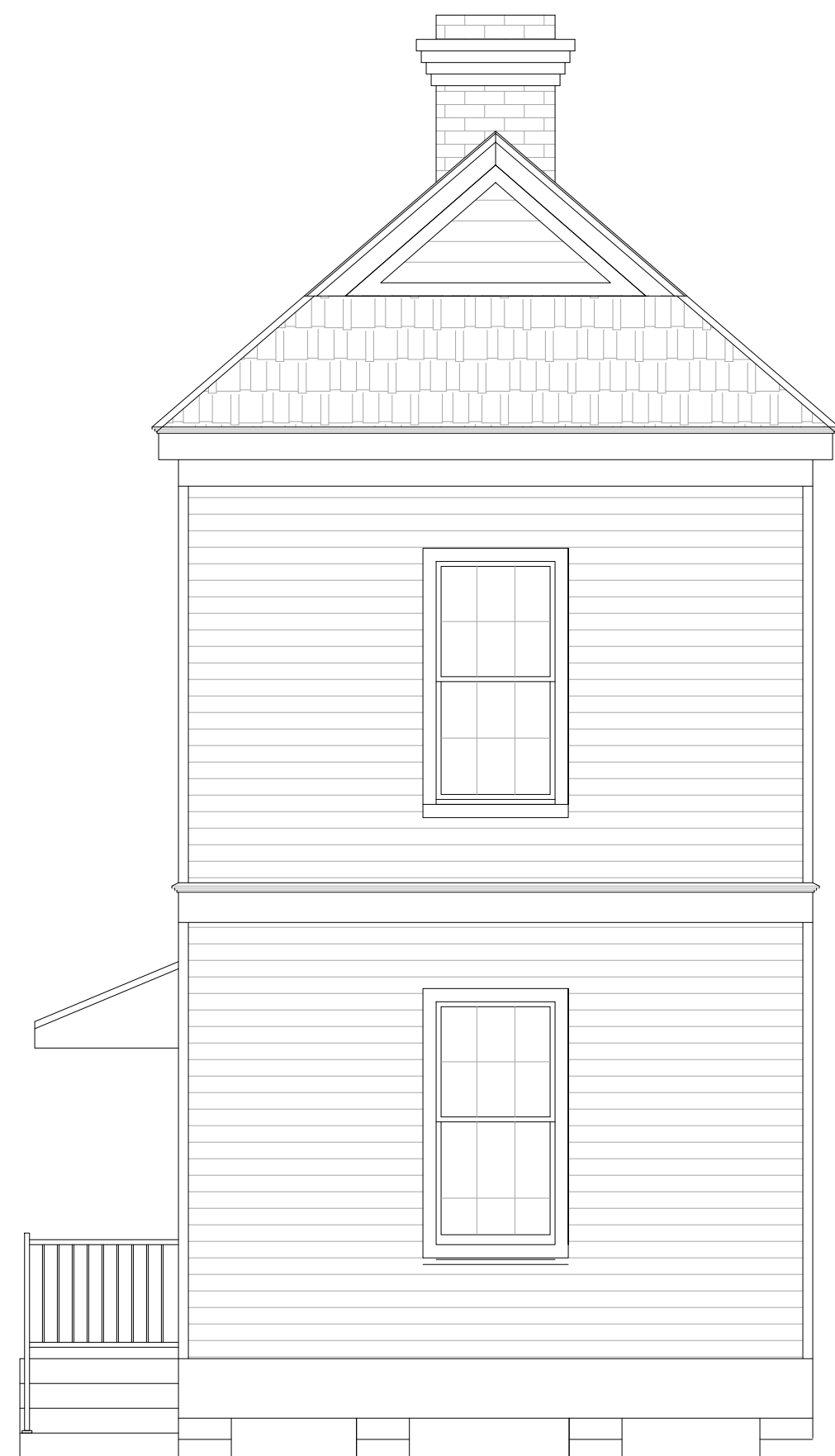
10-10-22

SCALE:

SHOWN

SHEET No.

A1 of 3



4102-4104 PERRIER ST., NEW ORLEANS, LA 70115

FRONT ELEVATION (PERRIER STREET SIDE)

SCALE: 1/4" = 1'-0"



4102-4104 PERRIER ST., NEW ORLEANS, LA 70115

RIGHT SIDE ELEVATION

SCALE: 1/4" = 1'-0"



4102-4104 PERRIER ST., NEW ORLEANS, LA 70115

LEFT SIDE ELEVATION

SCALE: 1/4" = 1'-0"

MULTI UNIT HOUSE
4102-4104 PERRIER ST., NEW ORLEANS, LA 70115

ELEVATIONS

DESIGN

STRUCTURAL DESIGN

APPROVED BY

DRAWN BY **MLC**

DATE

10-10-22

SCALE:

SHOWN

SHEET No.

A3 of 3