

THE DESIGN FOR THE WORK SHOWN ON THESE PLANS SHALL BE BASED ON THE REQUIREMENTS SET FORTH IN THE INTERNATIONAL CODE COUNCILS' INTERNATIONAL BUILDING CODES WIND - SPEED MAPS (REFERRED TO AS ULTIMATE WIND SPEED MAPS), ASCE 7-10

LAURICELLA LIMITED
ARCHITECTS
 317 ALIX STREET
 NEW ORLEANS, LOUISIANA 70114
 (504) 650-5617 LLTDARCH@AOL.COM
 DATE: **10/14/22** PROJECT no. **2252**



ORIGINAL DESIGN

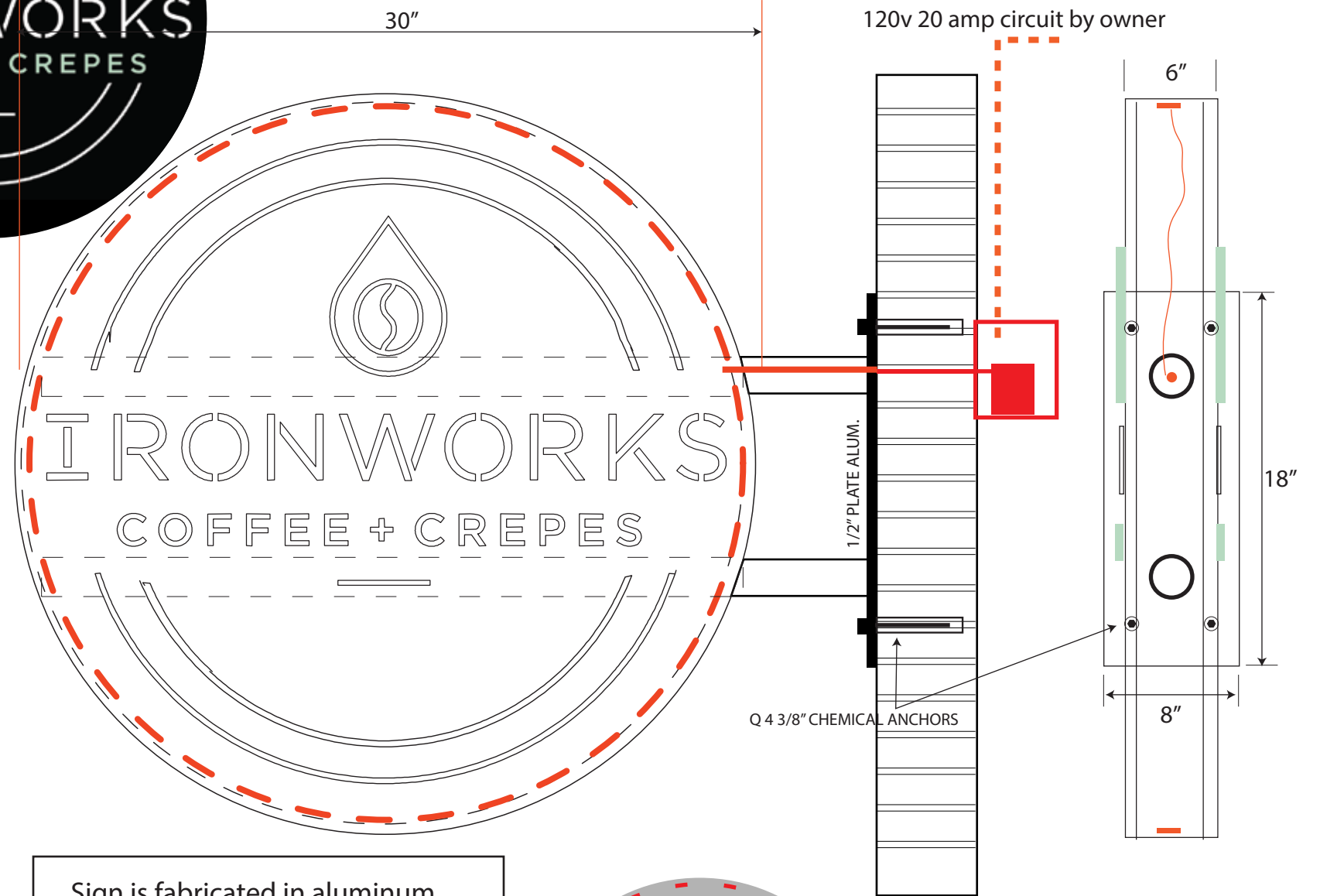


Dimensions must meet the standards set forth in the City of New Orleans Comprehensive Zoning Ordinance.



THESE PLANS AND SPECIFICATIONS HAVE BEEN PREPARED BY ME OR UNDER MY CLOSE SUPERVISION. TO THE BEST OF MY KNOWLEDGE AND BELIEF THEY COMPLY WITH ALL LOCAL, PARISH & STATE REQUIREMENTS INCLUDING (IBC 2015) INTERNATIONAL BUILDING CODE, 2015 EDITION. I WILL (WILL NOT) SUPERVISE CONSTRUCTION

Frank Lauricella
 FRANK LAURICELLA LA REG. No. 3789

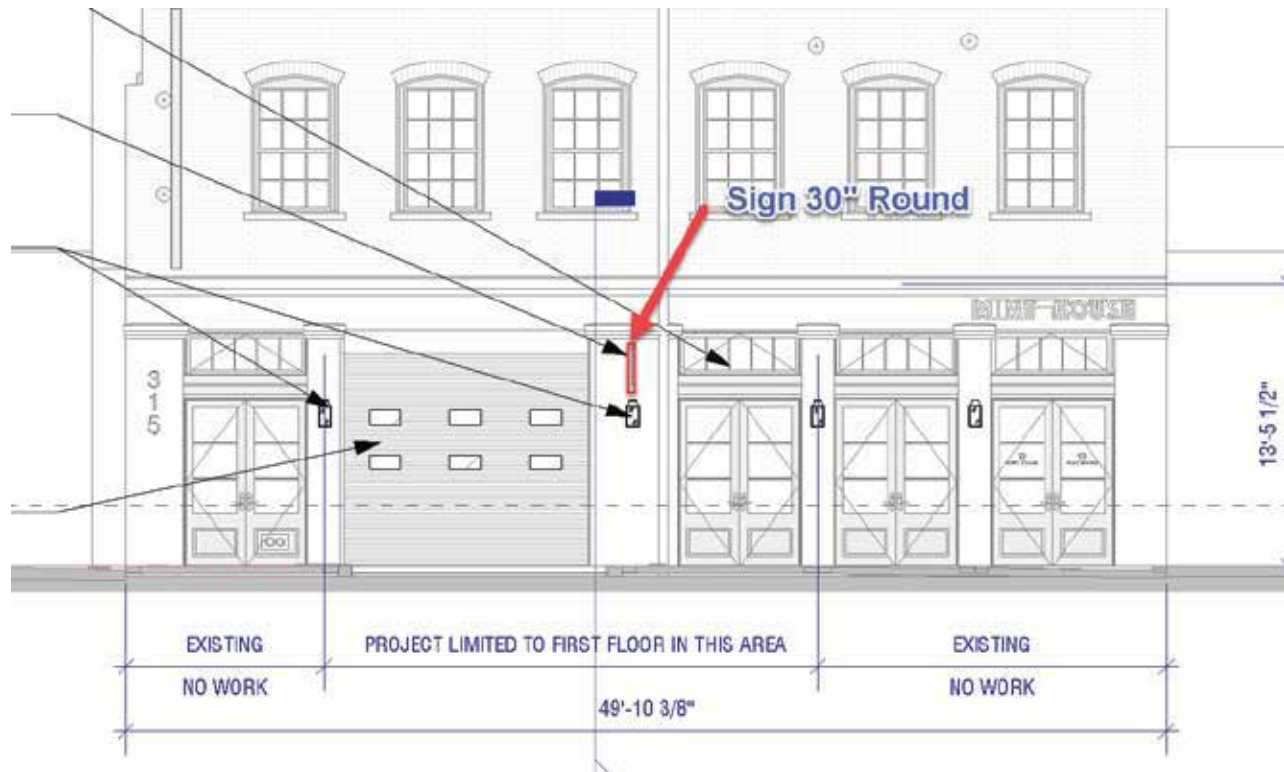


Sign is fabricated in aluminum. Alum. sign face is 1/8" with 1/2" push thur acrylic letters internally illuminated with white LED illumination.



WHITE LED LIGHTS 5000K

315 Girod st.



David Barr
 504.237.2101 c
 davidbarr@opagraphics.com
 LA. CONTR. LIC# 56397