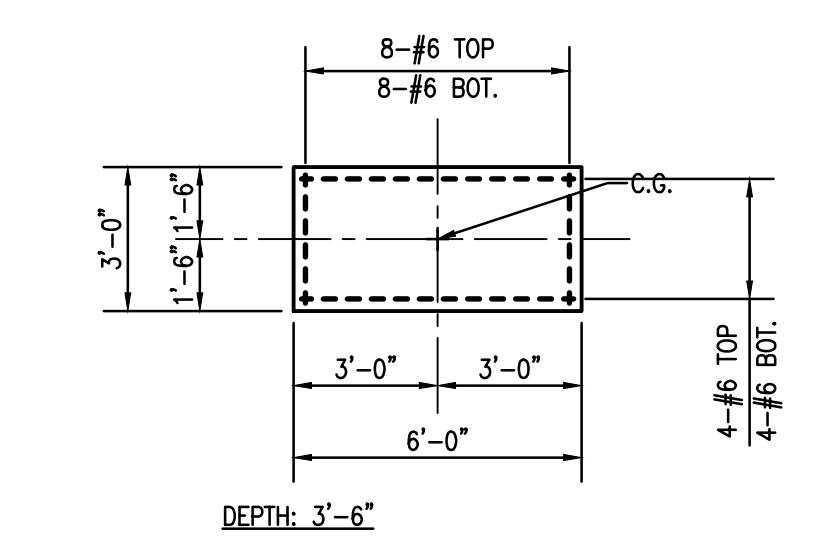
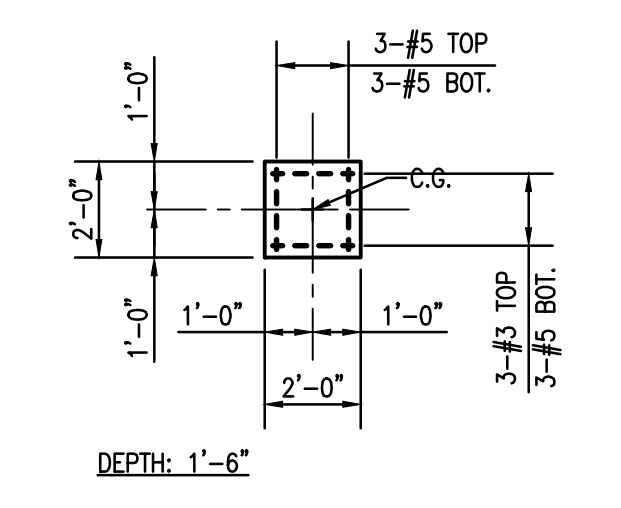


1 FIRST FLOOR PLAN
S1.1 1/8"=1'-0"



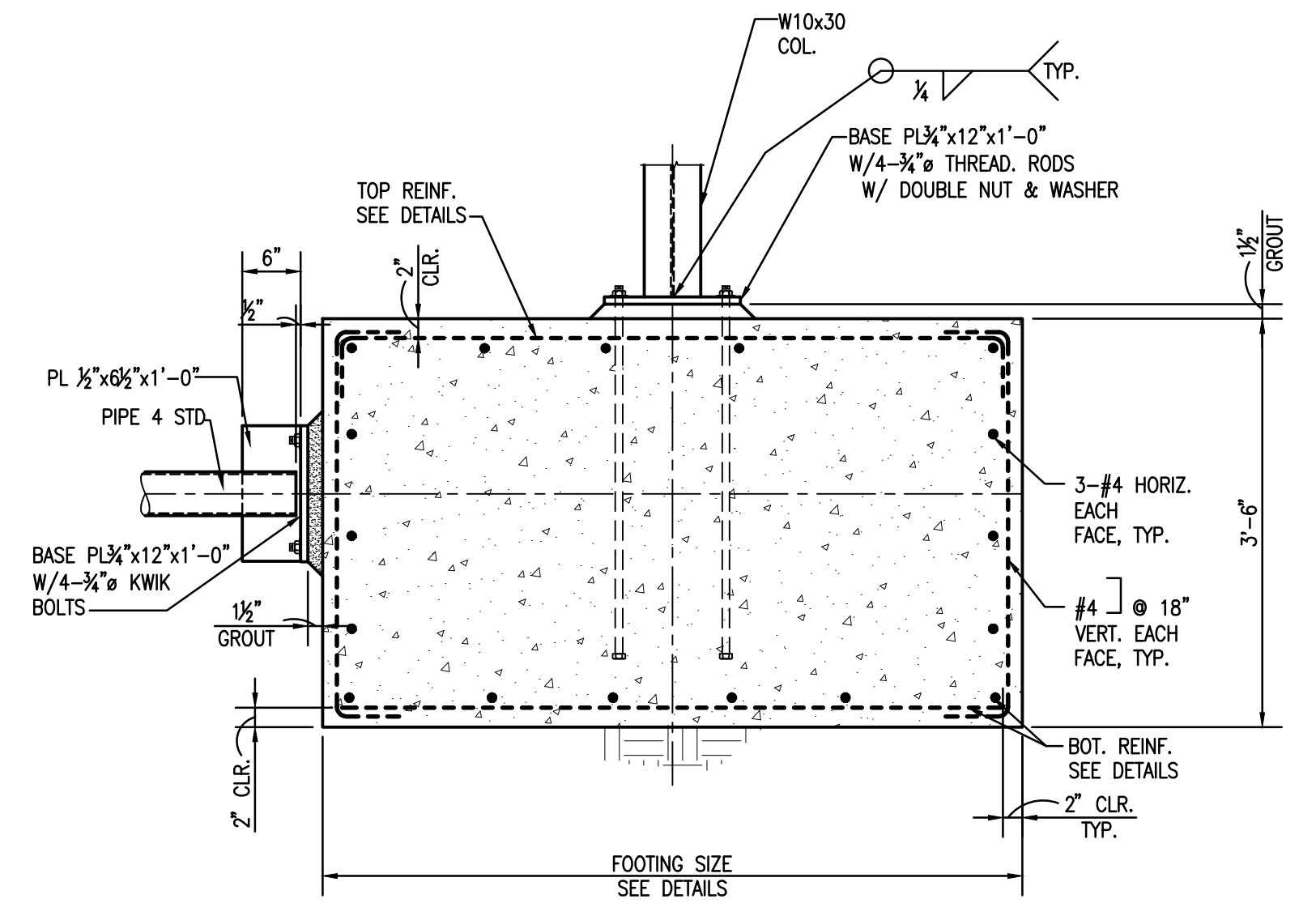
2 PLAN DETAIL-FOOTING AT BRACE (F1)
S1.1 1/4"=1'-0"



3 PLAN DETAIL-FOOTING AT BRACE (F2)
S1.1 1/4"=1'-0"

5 GENERAL NOTES
S1

1. **EXISTING CONDITIONS:**
ALL DIMENSIONS AND CONDITIONS TYING INTO OR GOVERNED BY EXISTING CONSTRUCTION ARE APPROXIMATE AND ARE NOT PURPORTED TO BE CORRECT. ALL SUCH DIMENSIONS AND CONDITIONS SHALL BE FIELD VERIFIED BY THE CONTRACTOR PRIOR TO THE PREPARATION OF SHOP DRAWINGS. FIRST SUBMITTAL OF SHOP DRAWINGS MUST CONTAIN CORRECT CONDITIONS AND DIMENSIONS OBTAINED FROM THE FIELD. IF CONDITIONS AND DIMENSIONS VARY GREATLY FROM THOSE SHOWN, THE CONTRACTOR SHALL NOTIFY THE EOR BEFORE PREPARATION OF SHOP DRAWINGS.
2. **SHORING:**
SHORE AND BRACE ALL EXISTING FRAMING AS REQUIRED IN ORDER TO ACCOMPLISH WORK SHOWN ON DRAWINGS.
3. **DAMAGE TO EXISTING CONSTRUCTION:**
ALL WORK SHALL BE DONE IN A MANNER WHICH WILL NOT DAMAGE ADJACENT EXISTING CONSTRUCTION WHICH IS TO REMAIN.
4. **PATCHING MATERIALS AND INSTALLATION:**
ALL MATERIALS USED FOR PATCHING SHALL MATCH EXISTING MATERIALS IN APPEARANCE AND QUALITY. WORKMANSHIP SHALL BE IN CONFORMANCE WITH TODAY'S STANDARDS BUT SHOULD BE NO LESS IN QUALITY THAN ANY OF THE ADJACENT WORKMANSHIP IN THE AREA BEING PATCHED.
5. **CONCRETE:**
A. ACI 301-05 SPECIFICATIONS
B. NORMAL WEIGHT CONCRETE: 150 PCF
C. COMPRESSIVE STRENGTH AT 28 DAYS:
1. FOOTINGS: 4000 PSI
6. **REINFORCING STEEL:**
A. BARS: ASTM A615, GRADE 60
7. **REINFORCING CLEARANCES REQUIRED ARE AS FOLLOWS:**
ACI 117 STANDARDS. UNLESS SPECIFICALLY NOTED OR SHOWN ON THE DRAWINGS, REINFORCING CLEARANCES SHALL BE AS FOLLOWS:
B. FOOTINGS: 3" CLEAR BOTTOM CAST ON EARTH, 1/2" CLEAR SIDES AND TOP FORMED.
8. **REINFORCING DETAILS FOR SOIL SUPPORTED CONCRETE:**
ACI 315 STANDARDS. UNLESS SPECIFICALLY NOTED OR SHOWN ON THE DRAWINGS, BAR LAPS AND CONFIGURATIONS SHALL BE STAGGERED AND LAPPED WITH A FULL TENSION LAP.
A. TOP BARS: HOOK AT NON-CONTINUOUS ENDS.
9. **STRUCTURAL STEEL:**
A. A.I.S.C. SPECIFICATIONS; STEEL CONSTRUCTION MANUAL 13TH EDITION; ALL WIDE FLANGE SHAPES ASTM A992 GRADE 50, ALL MISCELLANEOUS SHAPES ASTM A36, HSS SHAPES ASTM A500 GRADE B Fy=46 ksi, STEEL PIPE ASTM A53 GRADE B Fy=36 ksi; HIGH STRENGTH BOLTS A325, 3/4" MIN. EXCEPT AS NOTED OTHERWISE; ANCHOR RODS AND BOLTS ASTM F1554 GRADE 36 EXCEPT AS NOTED OTHERWISE; E-70 ELECTRODES.
B. ALL BEAM CONNECTIONS SHALL BE A.I.S.C. STANDARD FRAMED CONNECTIONS. SHOP CONNECTIONS SHALL BE WELDED. FIELD CONNECTIONS SHALL BE BOLTED, EXCEPT CONNECTIONS TO EXISTING CONSTRUCTION SHALL BE WELDED. CONNECTIONS NOT SCHEDULED OR DETAILED OTHERWISE TO BE DESIGNED FOR 1/2 UNIFORM LOAD BEAM CAPACITY FOR PROPER BEAM SPAN AND 2/3 UNIFORM LOAD BEAM CAPACITY FOR PROPER BEAM SPAN FOR COMPOSITE BEAMS.
C. ALL STRUCTURAL STEEL CAN BE PRIMED.
10. **WELDING PRECAUTIONS:**
A. FIRE PREVENTION: AT ALL TIMES DURING WELDING AND TORCH CUTTING IN THE EXISTING BUILDING THE CONTRACTOR SHALL HAVE ADEQUATE FIRE FIGHTING EQUIPMENT READY FOR USE AT THE LOCATION OF THE WELDING. THE WELDING AND TORCH CUTTING PROCESS SHALL BE CLOSELY OBSERVED AND MONITORED BY THE CONTRACTOR SO AS TO PREVENT THE IGNITION OF ANY COMBUSTIBLES IN THE CONSTRUCTION AREA. OBSERVATIONS SHALL CONTINUE FOR AT LEAST 4 HOURS AFTER WELDING IN A PARTICULAR AREA HAS CEASED.
B. PROVIDE ADEQUATE VENTILATION AS TO TOTALLY EXHAUST WELDING FUMES OUT OF THE CONSTRUCTION AREA SO AS NOT TO CONTAMINATE ANY PORTION OF THE EXISTING BUILDING.
11. **TESTING LABORATORY SERVICES:**
ARCHITECT SHALL APPROVE AND OWNER SHALL SELECT AND PAY FOR THE SERVICES OF AN INDEPENDENT TESTING LABORATORY TO PERFORM THE FOLLOWING:
A. APPROVE CONTRACTOR'S CONCRETE MIX DESIGN.
B. WITNESS PLACING OF CONCRETE AND MOLD AND TEST CYLINDERS. TEST ONE CYLINDER AT 7 DAYS AND TWO AT 28 DAYS (MIN. REQ'D).
C. REVIEW WELDER'S QUALIFICATIONS AND CHECK ALL STRUCTURAL STEEL CONNECTIONS IN FIELD.
12. **SHOP DRAWINGS:**
COMPLETE SHOP AND PLACING DRAWINGS FOR ALL REINFORCING STEEL, ALL STRUCTURAL STEEL AND ALL SPECIALTY DESIGN ITEMS, SHALL BE FURNISHED TO THE ENGINEER FOR REVIEW. THE ENGINEER WILL HAVE UP TO 10 WORKING DAYS FROM THE TIME OF RECEIPT OF THE SHOP DRAWINGS TO COMPLETE HIS REVIEW AND RETURN THEM TO THE ARCHITECT. REPRODUCTIONS MADE FROM CONTRACT DRAWINGS WILL NOT BE ACCEPTED. SUBMIT THREE PRINTS TO THE ENGINEER OF RECORD WITH EACH SUBMITTAL. ONE WILL BE KEPT AS A RECORD COPY AND TWO WILL BE RETURNED TO THE ARCHITECT FOR DISTRIBUTION. REVIEW OF SHOP DRAWINGS BY THE ARCHITECT/ENGINEER WILL BE FOR GENERAL COMPLIANCE WITH CONTRACT DOCUMENTS.
13. **DISPOSAL OF WASTE MATERIALS:**
REMOVE FROM OWNER'S PROPERTY ALL MATERIALS LABELED ON THESE DRAWINGS TO BE DEMOLISHED AS WELL AS ALL EXCESS EXCAVATED MATERIAL, TRASH, DEBRIS, CONSTRUCTION MATERIALS, ETC. AND LAWFULLY DISPOSE OF THESE MATERIALS OFF OF THE OWNER'S PROPERTY.
14. **DESIGN LOADS AND OTHER PERTINENT DESIGN INFORMATION:**
A. BUILDING CODE: INTERNATIONAL BUILDING CODE 2015 / ASCE 7-10
B. WIND LOAD:
1. ULTIMATE WIND SPEED: 145 MPH
2. WIND IMPORTANCE FACTOR (I_w): II
3. WIND EXPOSURE CATEGORY: B



4 DETAIL-TYPICAL FOOTING FOR COLUMNS
S1.1 3/4"=1'-0"

REVISIONS	BY
JLS	

MORPHY Consulting Engineers
 336 N. JEFF DAVIS PKWY.
 SUITE 200
 NEW ORLEANS, LOUISIANA 70119
 PHONE: (504) 488-1317
 FAX: (504) 488-0924

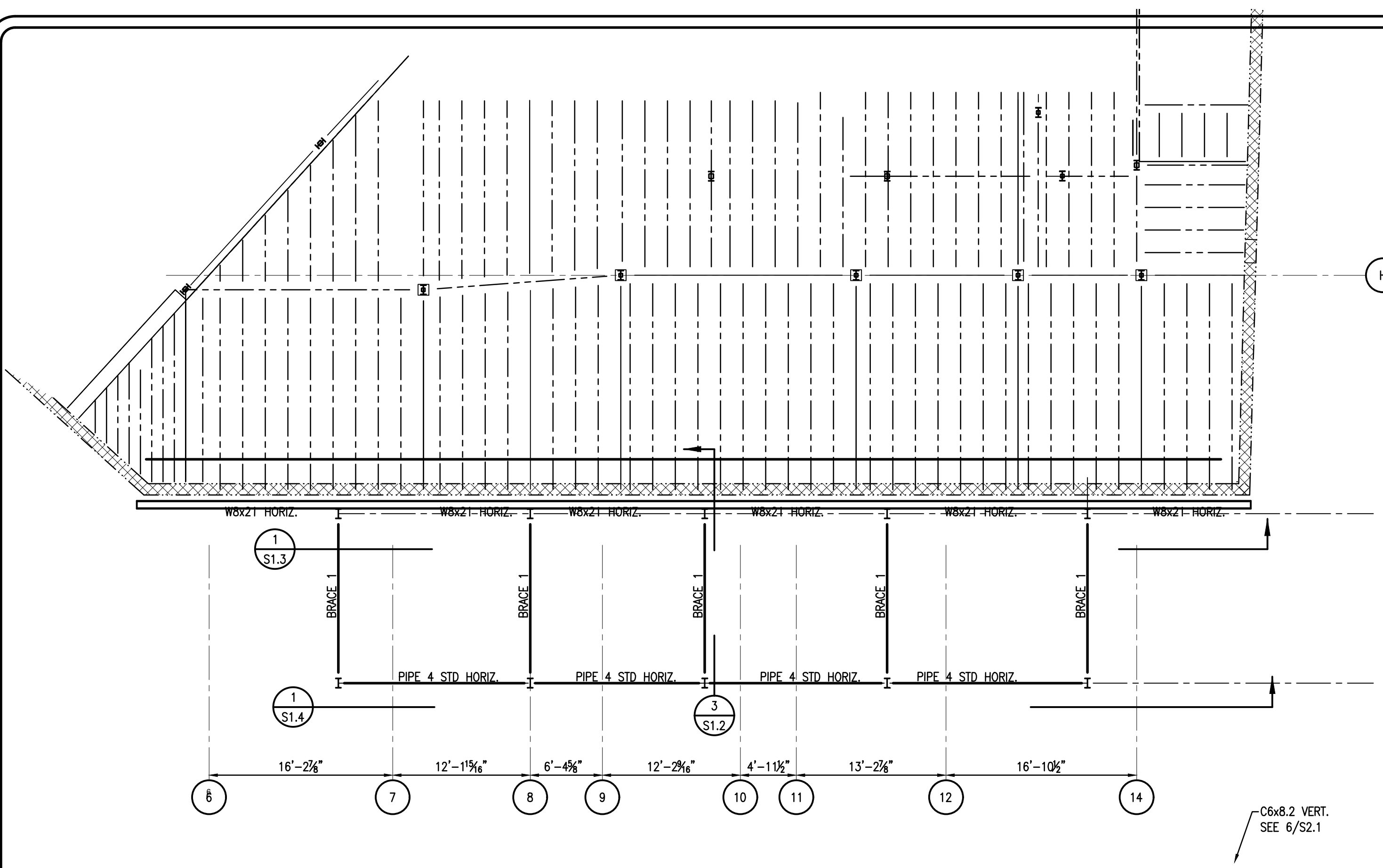
MAKOFSKY
 INCORPORATED

502 FRENCHMAN STREET
 TEMPORARY BRACING
 NEW ORLEANS, LA

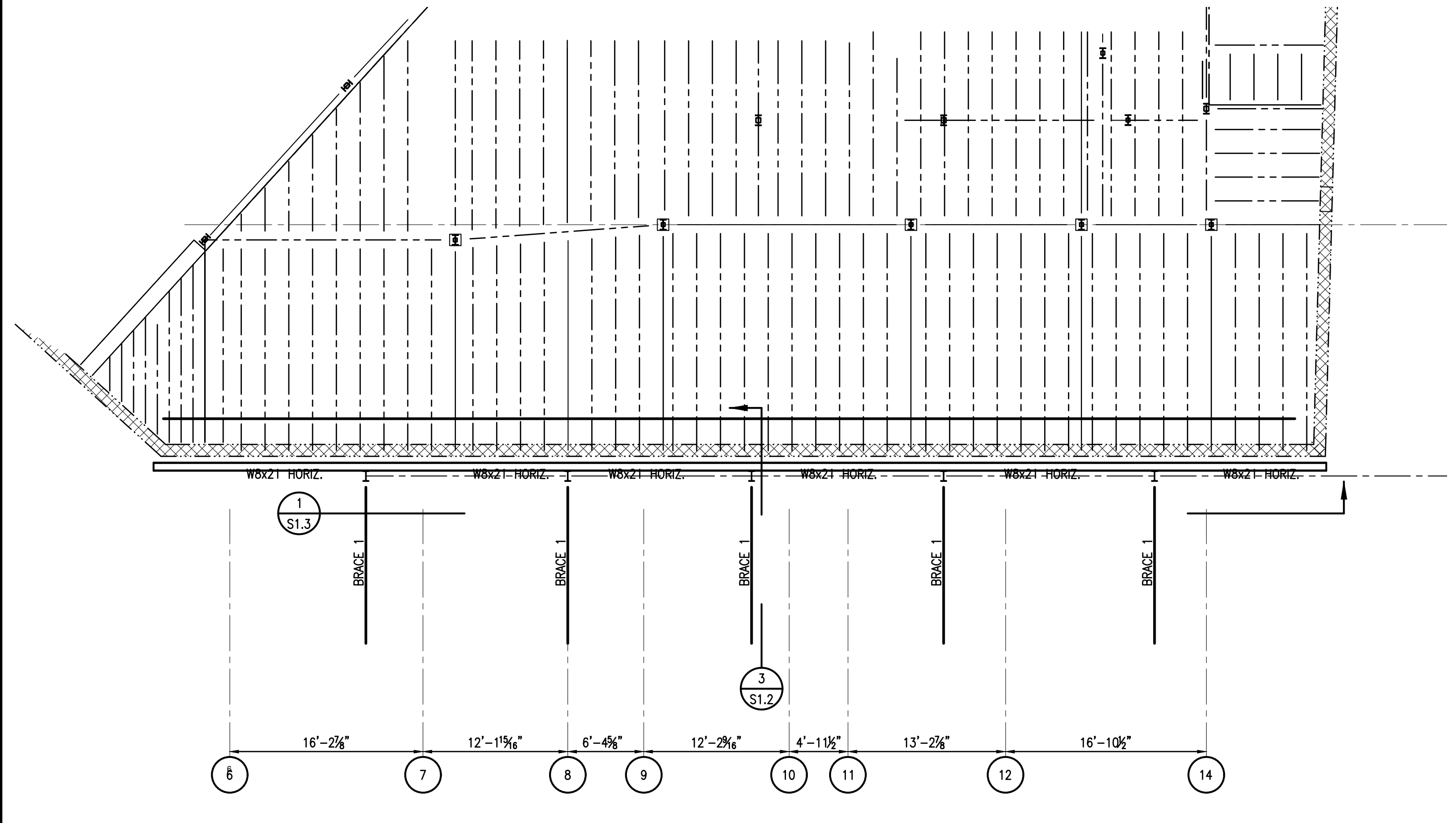
DRAWN	JLS
CHECKED	JLS
DATE	05-30-22
ISSUE	
SCALE	AS SHOWN
JOB NO.	22123
SHEET	S1.1
OF	

PA\2022\22123 502 FRENCHMAN SHORING\TRASH\22123-S1.LDING 8/12/2022 3:20:05 PM

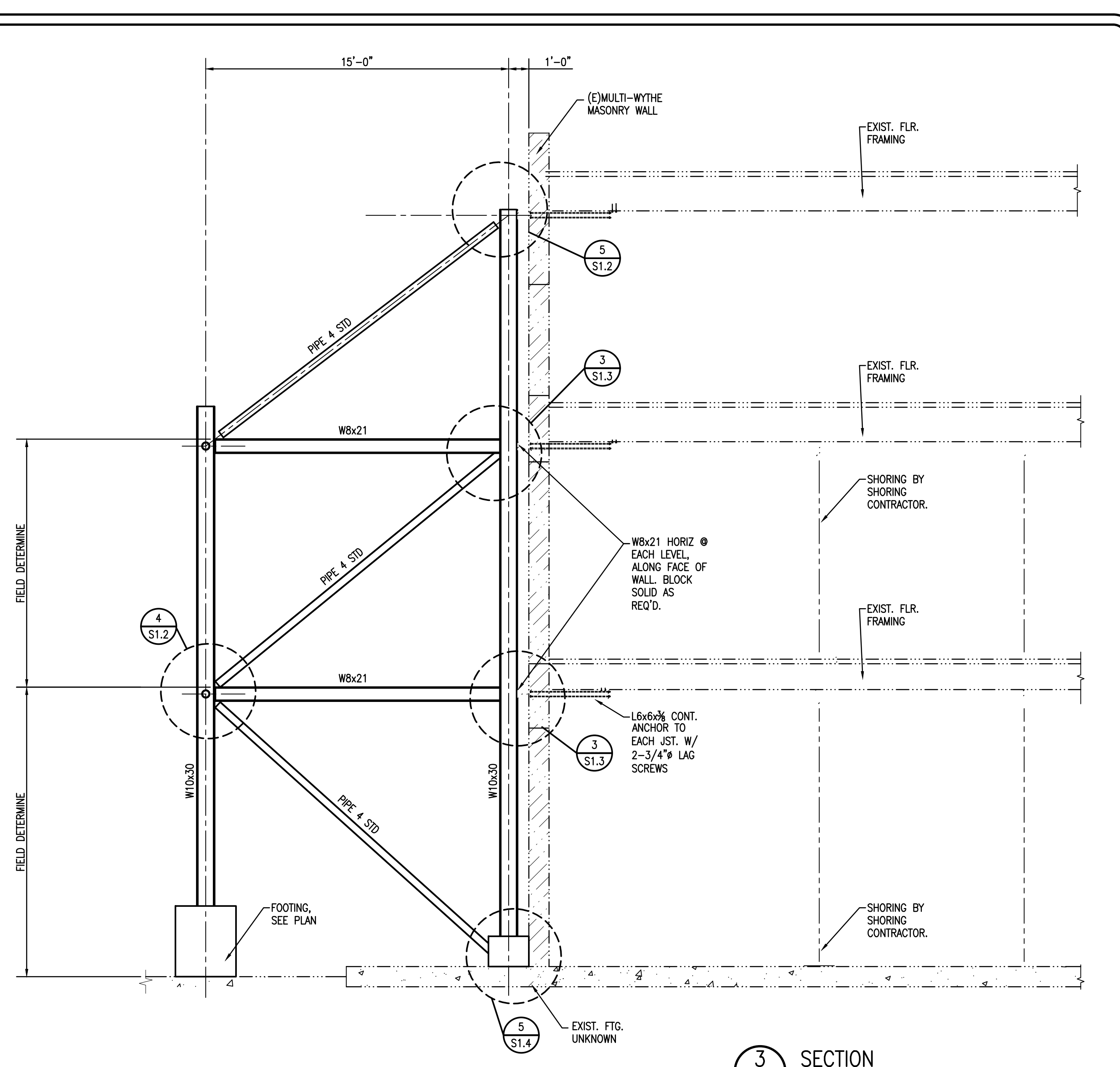
PA:2022\2123 502 FRECHMAN SHORING\TRASH\2123-S1.2.DWG 8/12/2010 3:20:05 PM



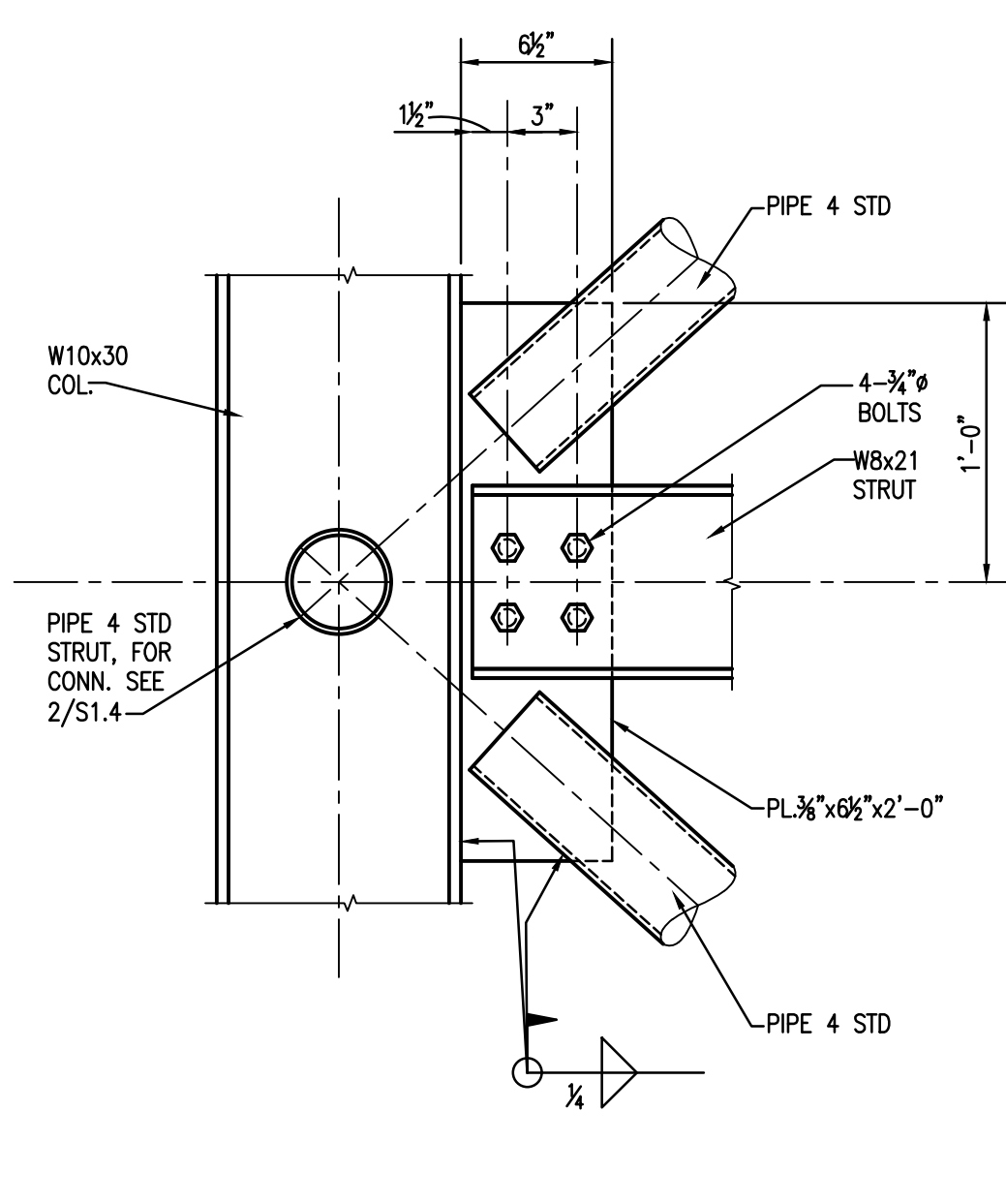
1 EXISTING 2ND & 3RD FLOOR FRAMING PLAN
1/8"=1'-0"



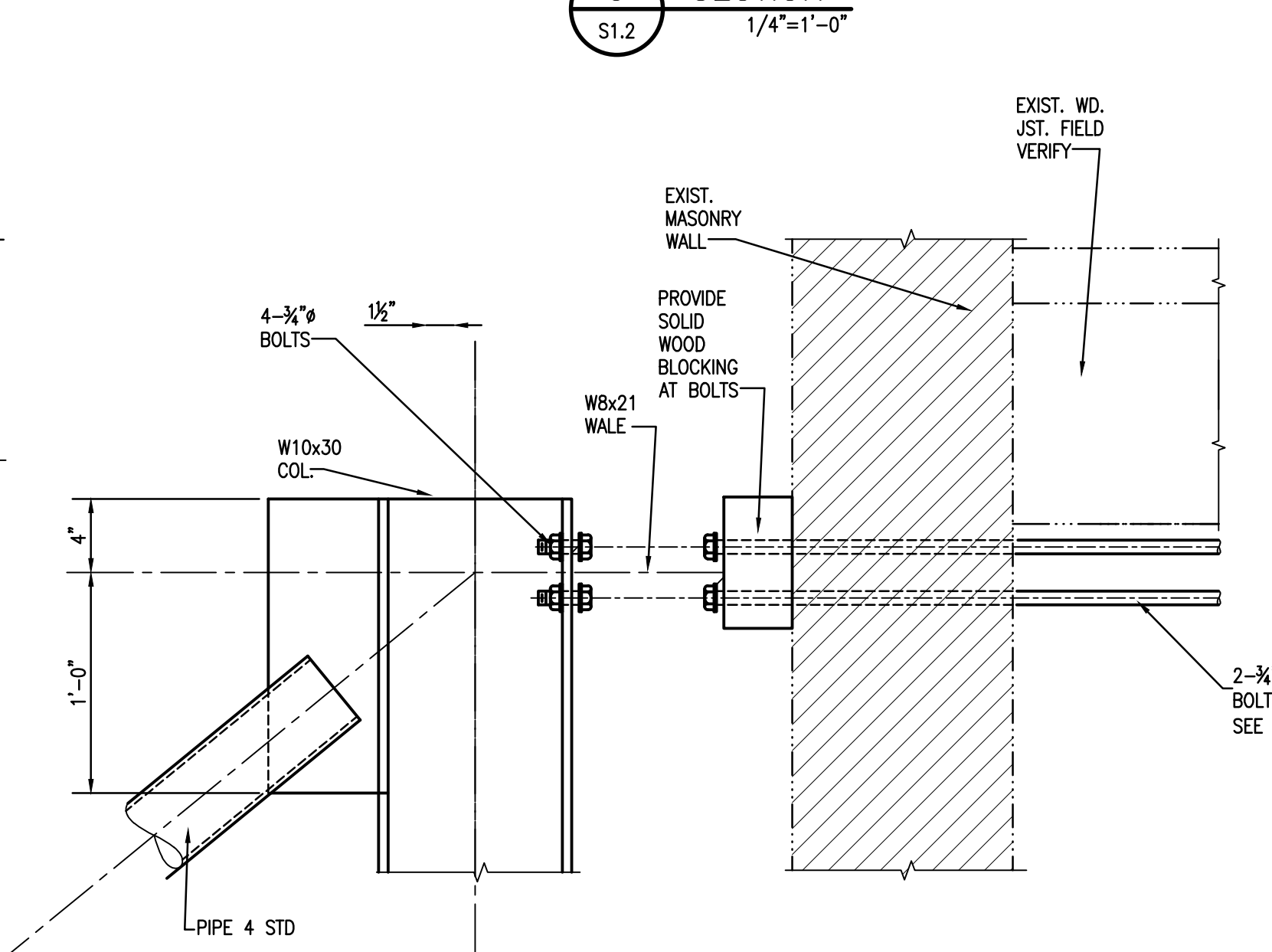
2 EXISTING ROOF FRAMING PLAN
1/8"=1'-0"



3 SECTION
1/4"=1'-0"



4 DETAIL
1 1/2"=1'-0"



5 DETAIL
1 1/2"=1'-0"

REVISIONS	BY
REV. 1	JLS

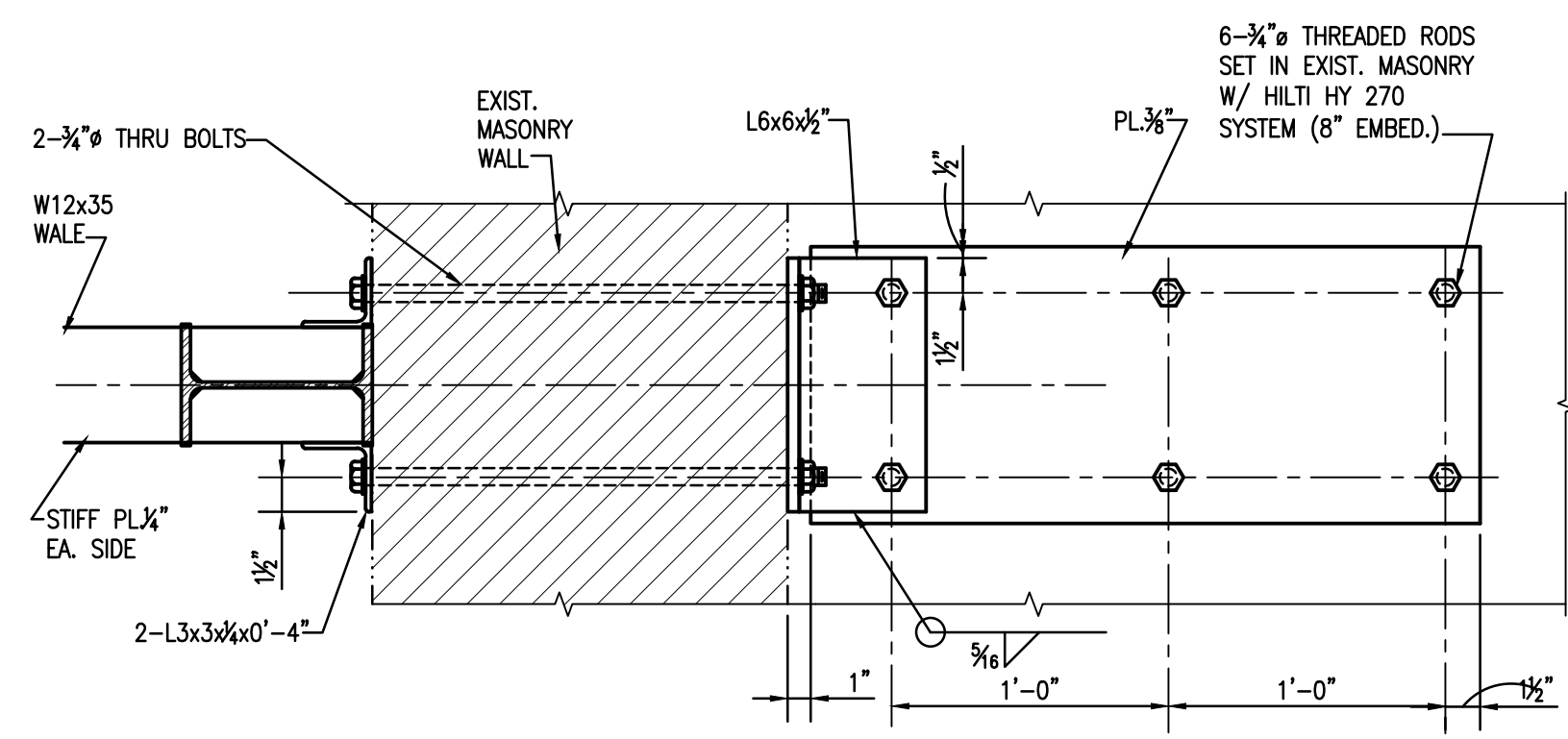
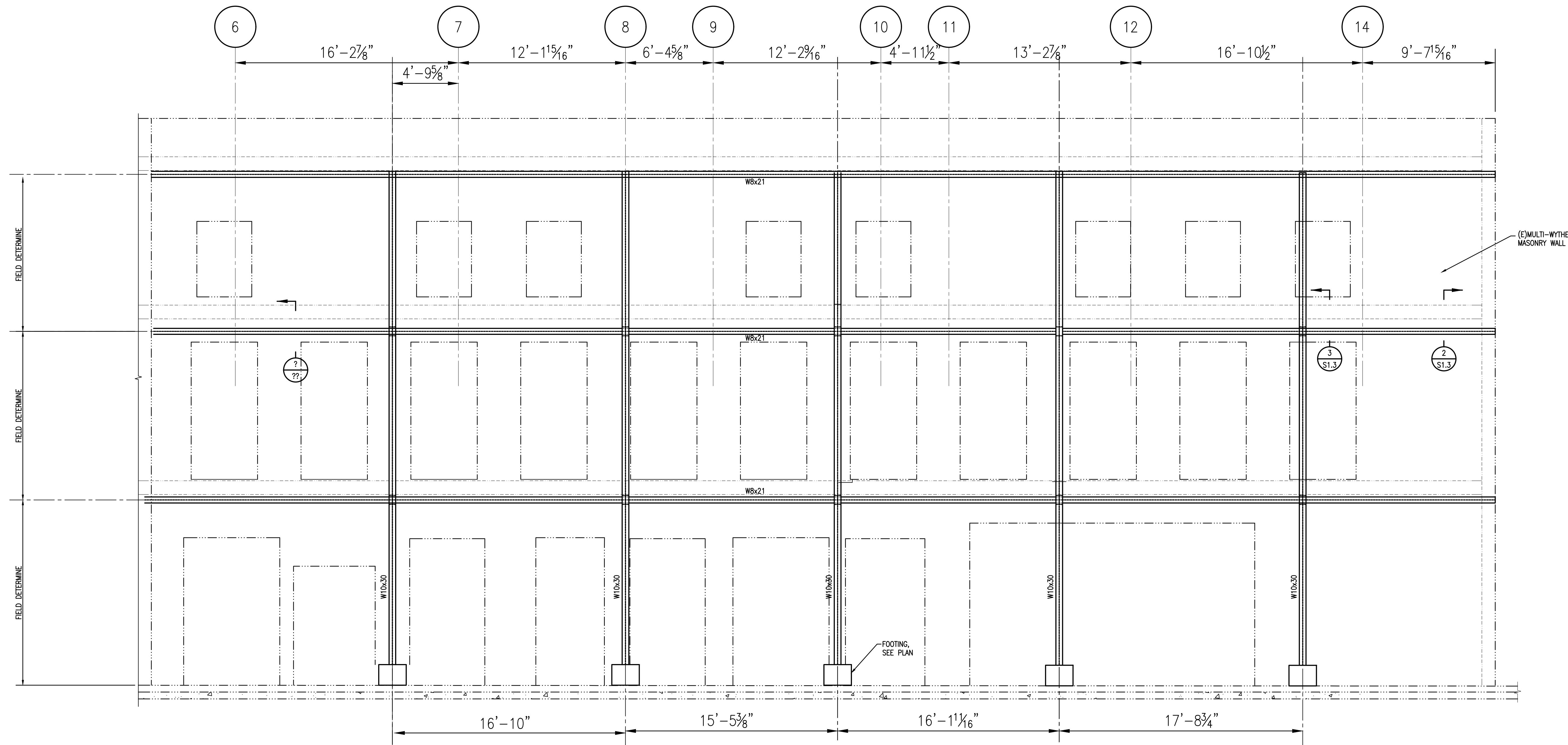
MORPHY Consulting Engineers
336 N. JEFF DAVIS PKWY.
SUITE 200
NEW ORLEANS, LOUISIANA 70119
PHONE: (504) 488-1317
FAX: (504) 488-0924

MAKOFSKY
INCORPORATED

521 TCHOUPITOULAS STREET
TEMPORARY BRACING
NEW ORLEANS, LA

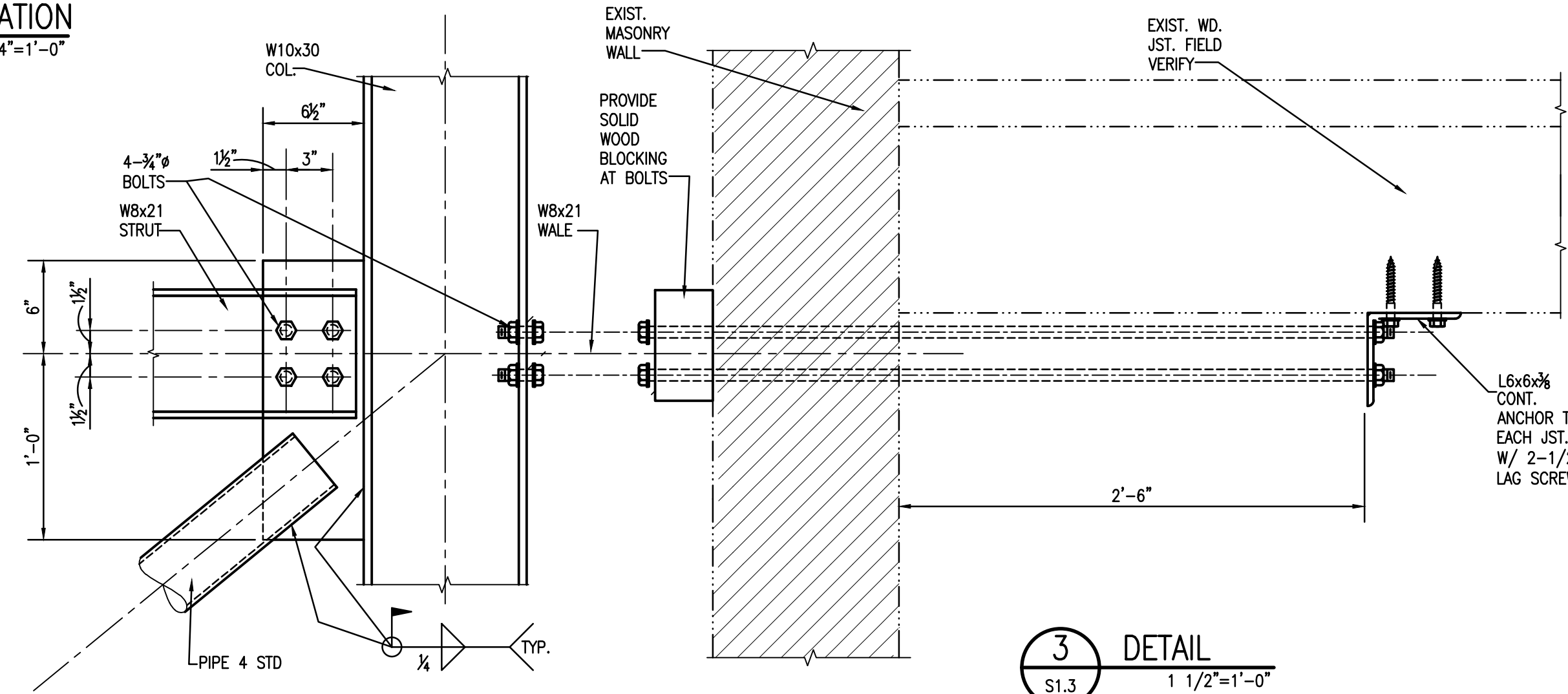
DRAWN	JLS
CHECKED	JLS
DATE	05-30-22
ISSUE	
SCALE	AS SHOWN
JOB NO.	20108
SHEET	
S1.2	
OF	

PA\2022\2123 502 FRENCHMAN SHORING\TRASH\2123-S1.3.DWG 8/12/2010 3:20:05 PM



2 SECTION
S1.3 1 1/2"=1'-0"

1 ELEVATION
S1.3 1/4"=1'-0"



3 DETAIL
S1.3 1 1/2"=1'-0"

REVISIONS	BY
REV. 1	JLS

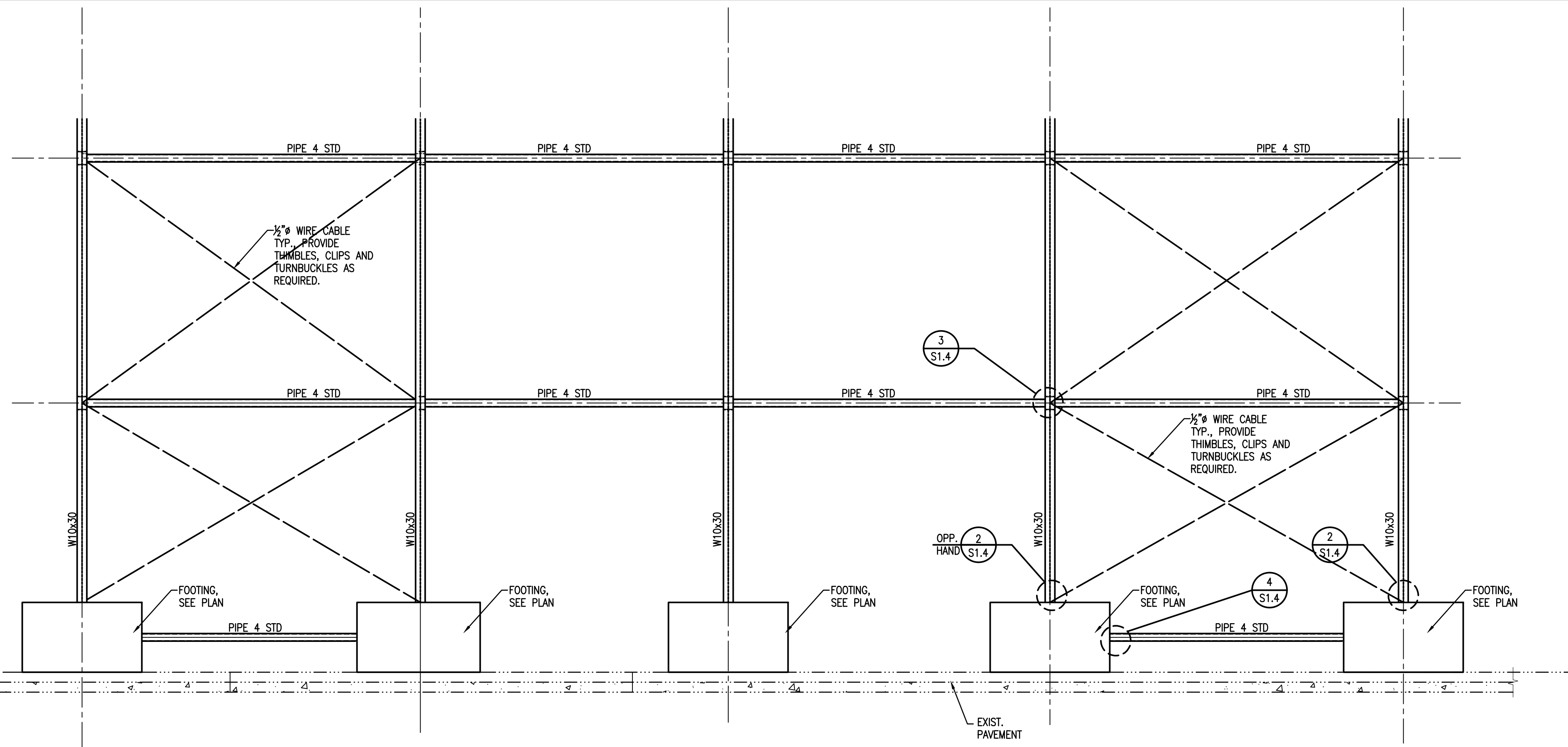
MORPHY Consulting Engineers
336 N. JEFF DAVIS PKWY.
SUITE 200
NEW ORLEANS, LOUISIANA 70119
PHONE: (504) 488-1317
FAX: (504) 488-0924

MAKOFSKY
INCORPORATED

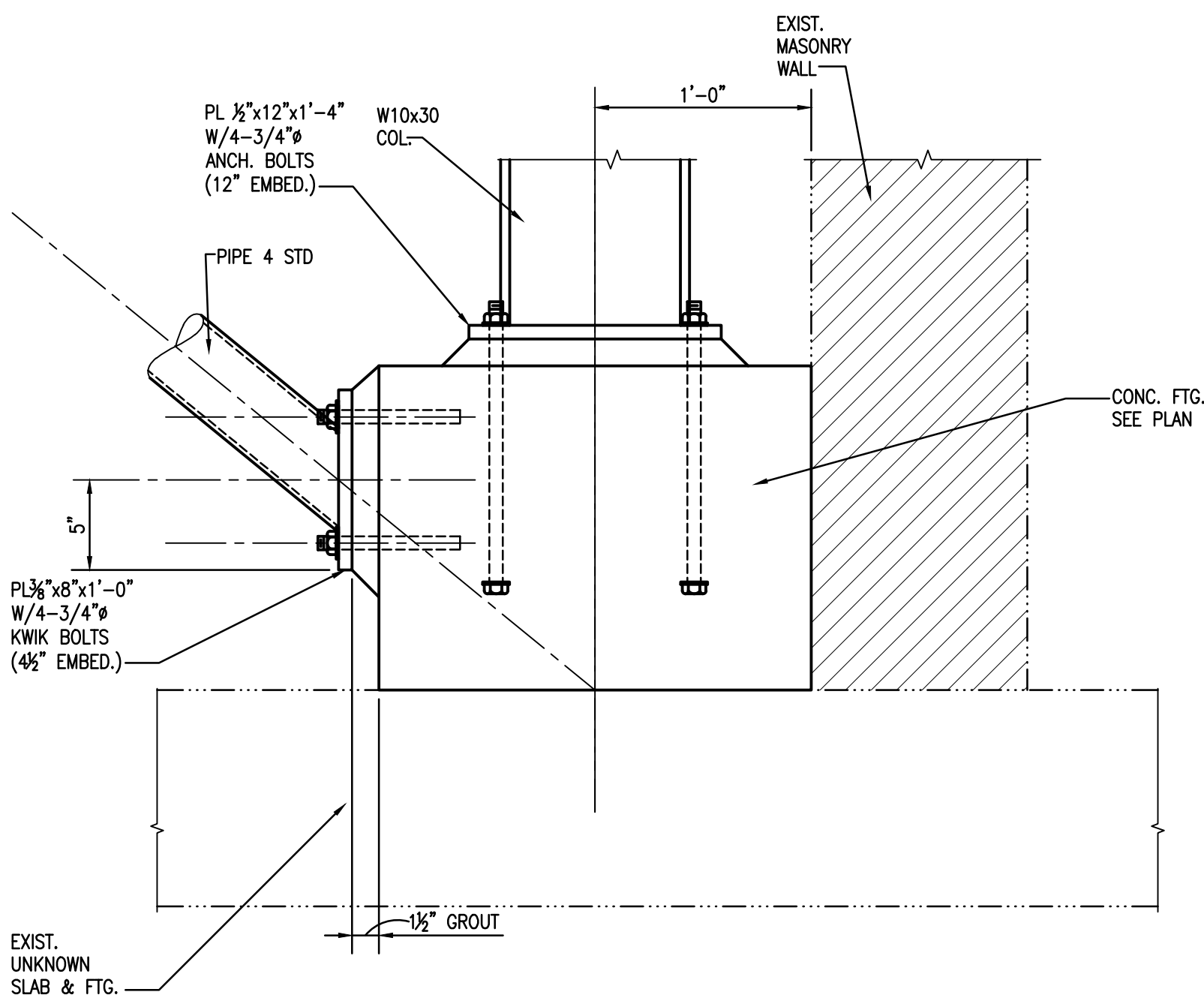
502 FRENCHMAN STREET
TEMPORARY BRACING
NEW ORLEANS, LA

DRAWN	JLS
CHECKED	JLS
DATE	05-30-22
ISSUE	
SCALE	AS SHOWN
JOB NO.	22123
SHEET	S1.3
OF	

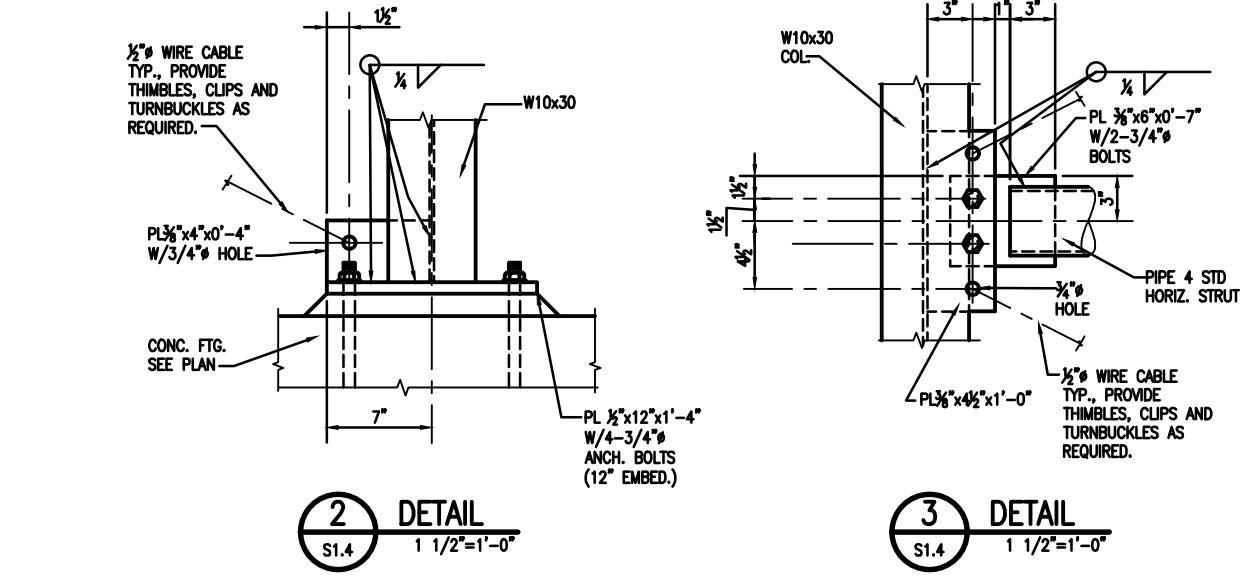
P:\2022\2123 502 FRENCHMAN SHORING\TRNG\2123-S1.dwg 8/12/2010 3:20:05 PM



1 ELEVATION
S1.4 1/4"=1'-0"

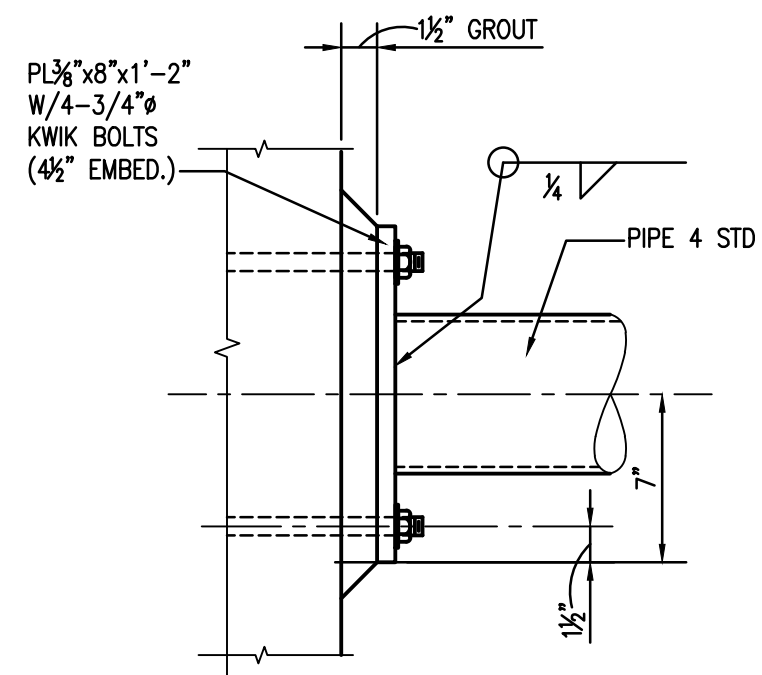


5 DETAIL
S1.4 1 1/2"=1'-0"



2 DETAIL
S1.4 1 1/2"=1'-0"

3 DETAIL
S1.4 1 1/2"=1'-0"



4 DETAIL
S1.4 1 1/2"=1'-0"

REVISIONS	BY
REV. 1	JLS

MORPHY Consulting Engineers
 336 N. JEFF DAVIS PKWY.
 SUITE 200
 NEW ORLEANS, LOUISIANA 70119
 PHONE: (504) 488-1317
 FAX: (504) 488-0924
MAKOFSKY
INCORPORATED

502 FRENCHMAN STREET
TEMPORARY BRACING
 NEW ORLEANS, LA

DRAWN	JLS
CHECKED	JLS
DATE	05-30-22
ISSUE	
SCALE	AS SHOWN
JOB NO.	22123
SHEET	
S1.4	
OF	