

ALL CHANGES OR ADDITIONAL WORK MUST BE APPROVED BY THE HDLC

HIGH PERFORMANCE LINE

EXTREME® 300 SERIES GRILLE

Models EPG324 (straight) & EPG324B (brick)



INTELLIGENT OPERATION AND HIGH CYCLE LIFE

KEEP TRAFFIC MOVING

The Extreme 300 Series Grille operates up to **3 times faster** than standard coiling grilles and performs 300,000 cycles. Opening at speeds up to 24" per second and closing at 12" per second, it maximizes productivity, smooths traffic flow and reduces downtime in applications like parking facilities, airports and transportation hubs.

APEX™ SMARTCONTROLLER

An intelligent control panel featuring plug and play wiring makes installing and servicing the 300 Series Grille easier than ever before. The LCD screen communicates grille status messages, provides easy-to-follow instructions for grille commissioning, and electronically sets door limits. When the grille limits are set, they are continuously monitored and adjusted.

ENGINEERED FOR LONGEVITY

To ensure maximum uptime, the 300 Series Grille requires no maintenance, other than routine checks and no replacement parts. It accepts virtually all activation systems and features a 2 year operator warranty and a 2 year/300,000 cycle component warranty.

SMOOTH HIGH-SPEED OPERATION

The compact operator features a variable-frequency drive that ensures a soft start and stop - reducing wear and tear on both the grille and the operator. The 300 Series Grille operates at speeds of up to 24 inches per second. In addition, the operator's direct drive design means there's no sprocket and chain to wear or replace. With flexibility in mind, the 300 series grille is compatible with a 120V service (requires transformer, provided with upgrade).



800.294.4358 | cooksondoor.com

CornellCookson, LLC. is an ISO 9001:2015 registered company
2.2022

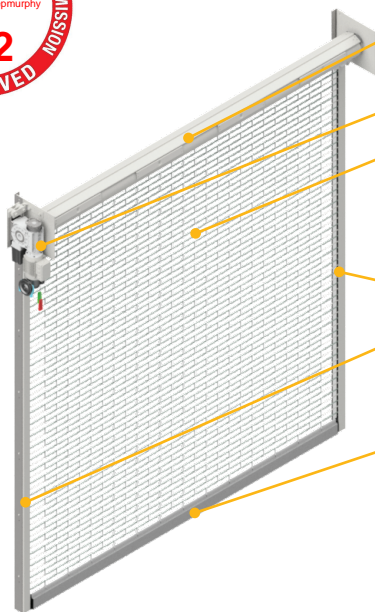
EXTREME SERIES

Preferred door solutions.®
COOKSON

HIGH PERFORMANCE LINE **EXTREME® 300 SERIES GRILLE**

Models EPG324 (straight) & EPG324B (brick)

STANDARD COMPONENT MATERIALS AND FINISHES



SPRINGLESS SHAFT - Steel pipe. Design reduces maintenance requirements and facilitates cycle capacity.

MOTOR - Compact, direct drive operator with no roller chains or sprockets.

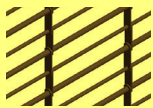
CURTAIN - Heavy-duty thick links in mill finish aluminum, 5/16" aluminum rods in mill finish spaced 2" on center. Aluminum tube spacers on every rod in brick pattern, or aluminum tube spacers on alternate rods in straight pattern, 9" link spacing. Grilles larger than 25' will have continuous end tube spacers if it is anodized.

GUIDES - Extruded aluminum in mill finish with self-lubricating anti-wear strips to greatly reduce friction and curtain wear. Includes a fully replaceable UHMW bellmouth.

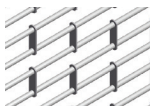
BOTTOM BAR - Heavy-duty extruded aluminum in mill finish. Also available with a sloped bottom bar.

A CHOICE OF CURTAIN PATTERNS

Two different curtain designs provide both visibility and ventilation.



Straight



Brick

OPERATION AND STRUCTURAL REQUIREMENTS

Motor operation required.

This product is supported by a guide assembly attached to the jamb construction or structural tubes attached to either wall or overhead construction. No additional header support is required unless hood supports are mandated by a larger opening width.

OPTIONAL MATERIALS AND FINISHES

- ▶ Aluminum in mill, clear, bronze and **black anodized**
- ▶ SpectraShield® Powder Coating in more than 180 colors (not available on curtains)

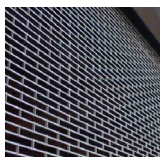
UNIQUE FEATURES

INTELLIGENT COMMUNICATION - The Apex™ SmartController (NEMA 4X) features plug and play connections to operator and standard sensors to reduce installation time. Its LCD screen provides step-by-step instructions for door commissioning, electronic limit setting, and status/ error messaging.

MONITORED PROTECTION, EVEN AT HIGH SPEEDS - UL 325-2010 (NEMA 4X) compliant photo eye sensors allow for momentary contact operation - useful in parking garages and other high-use openings. Interruption of the photo eye beam before the door fully closes causes the door to immediately halt downward travel and reverse direction to return to the fully open position.

SAFETYGARD LIGHT CURTAIN TECHNOLOGY - The 6' tall light curtain is installed within the guide and blends into the guide construction without a piece of slotted trim. If the grille is cycling and an object passes through the curtain beams, the door will immediately halt downward travel and reverse direction to return to the open position.

120V COMPATIBILITY - Compatible with 120V input by adding our transformer option. The transformer must be mounted to the wall and is 13 1/2" wide by 16 1/8" high.



CUSTOM-DESIGNED SOLUTIONS

Contact our experienced Architectural Design Support Team for help in customizing our products to fit your specific application.

www.architectdoorhelp.com

3500 ST.
CHARLES AVE.

PROJECT ADDRESS:
3500 SAINT CHARLES AVENUE
NEW ORLEANS, LA 70115

ARCHITECT:
FAROUKI FAROUKI
FAROUKI FAROUKI LLC
1239 SAINT THOMAS ST., SUITE B
NEW ORLEANS, LA 70130
T: 646.306.9820
E: SABRI@FAROUKIFAROUKI.COM

CIVIL / STRUCTURAL ENGINEER:
MORPHY MAKOFSKY
INCORPORATED
Consulting Engineers
MMI CONSULTING ENGINEERS
2335 N. NORMAN C. FRANCIS PKWY.
NEW ORLEANS, LA 70119
T: 504.488.1317
E: J_JUNEAU@MMI-ENG.COM

MEP ENGINEER / CONTRACTOR:
PONTCHARTRAIN MECHANICAL
716 LITTLE FARMS AVE.
METairie, LA 70003
T: 504.738.3061
E: WHUMPHRES@PONTMECH.COM

ELECTRICAL ENGINEER / CONTRACTOR:
CAMBAS ELECTRIC
3739 FLORIDA AVE.
KENNER, LA 70065
T: 504.461.8030
E: BCAMBAS@CAMBASELECTRIC.COM

SPRINKLER ENGINEER / CONTRACTOR:
JEFFERSON SPRINKLER, INC.
1903 HANCOCK ST.
GRETN, LA 70053
T: 504.383.0597
E: ERICD@JEFFERSONSPRINK.COM



NOT FOR CONSTRUCTION



7	09/07/22	ISSUED FOR PRICING #2
6	08/26/22	ISSUED FOR PRICING
5	06/10/22	ISSUED FOR PERMIT
4	05/29/22	CPC SUBMISSION #2
3	05/15/22	DESIGN DEVELOPMENT
2	05/02/22	CPC SUBMISSION
1	03/07/22	SCHEMATIC DESIGN

NO DATE ISSUE

SHEET TITLE:
BUILDING ELEVATION - EAST

SHEET NUMBER:

A-302

ISSUE DATE: 09/07/22
SCALE: As Indicated
PROJ NUMBER: 059
FORMAT: ARCH E1 (30" X 42")

CPC CHARACTER PRESERVATION CORRIDOR DESIGN OVERLAY DISTRICT (18.4.B)

1. THE DESIGN IS COMPATIBLE IN SCALE, MATERIALS, STREET LEVEL USES, AND SPATIAL RELATIONSHIPS WITH EXISTING DEVELOPMENT.
2. THE DESIGN PRESERVES THE RHYTHM OF THE STREET, DOORWAYS, AND WINDOWS.
3. THE DESIGN HAS ARTICULATED STREET FACADES WITH NO BLANK WALLS ALONG THE STREET.
4. ALL SIDES OF STRUCTURE VISIBLE TO THE PUBLIC ARE TREATED WITH APPROPRIATE STREET-FACING MATERIALS AND DETAILS.

BUILDING ELEVATION KEY NOTES:

3. CONTINUOUS ARCHITECTURAL GUARDRAIL (PAINTED STEEL ROD PICKETS W/ STEEL FLAT BAR TOP AND BOTTOM RAILS)
4. OUTSIDE CORNER REGLET DETAIL AT GROUND FLOOR ROUND ARCHES.
5. TWO-STEP (4" EACH / 8" OVERALL) ARCHITECTURAL REVEAL TYPICAL AT FLOORS 2 TO 5.
6. TWO-STEP (1" EACH / 2" OVERALL) ARCHITECTURAL REVEAL TYPICAL AT EAST AND WEST ELEVATIONS.
7. ALUMINUM STOREFRONT SYSTEM (SEE A-803 FOR ADDITIONAL INFORMATION.)
11. CONTINUOUS ARCHITECTURAL GUARDRAIL (PAINTED STEEL ANGLED FLAT BAR PICKETS W/ STEEL FLAT BAR TOP AND BOTTOM RAILS)
13. PAINT WOOD SITE FENCE (EQUAL POST SPACING @ 6'-0" O.C. MAX.)

