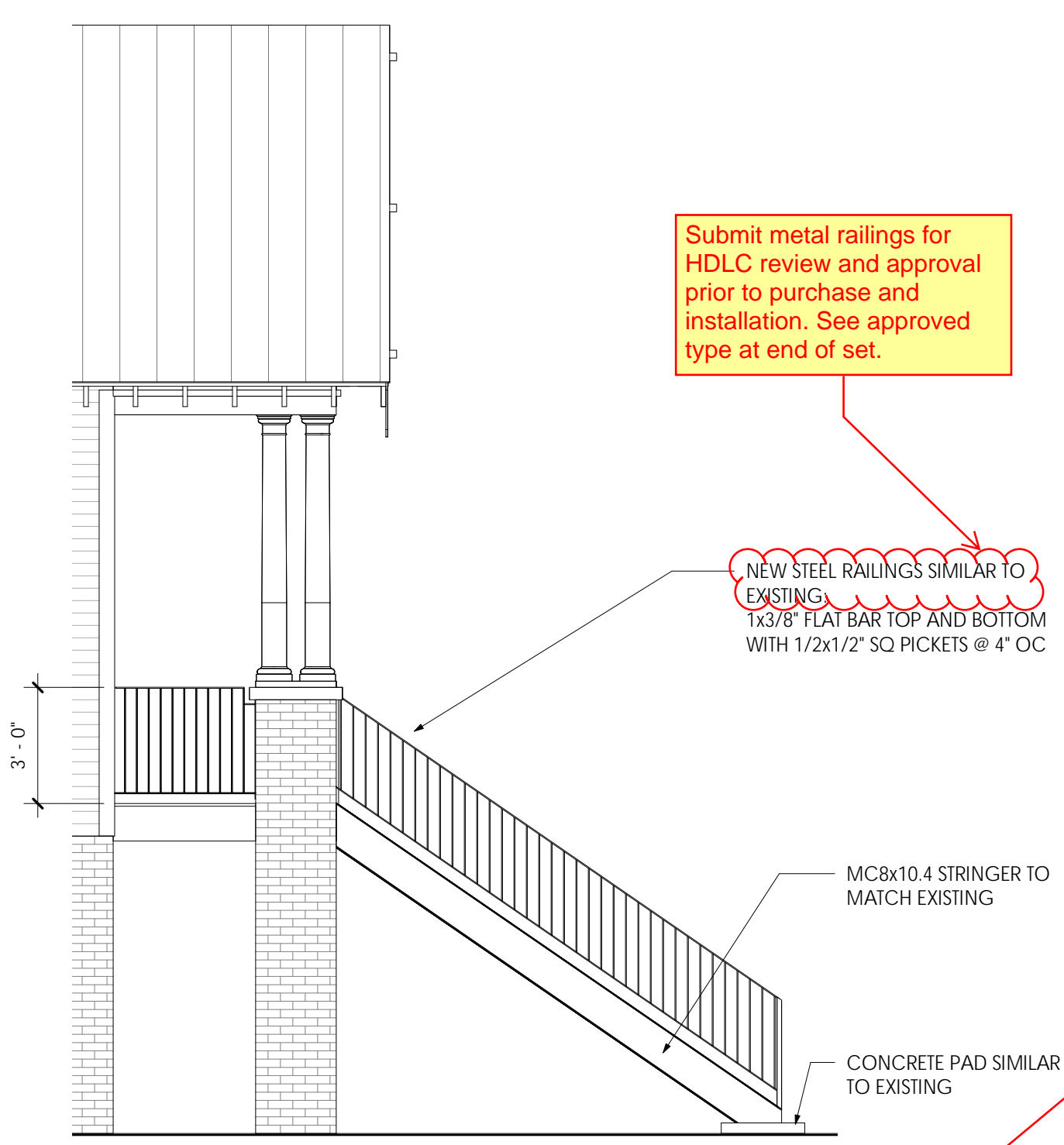


All new trim to be wood not Haride Plank.

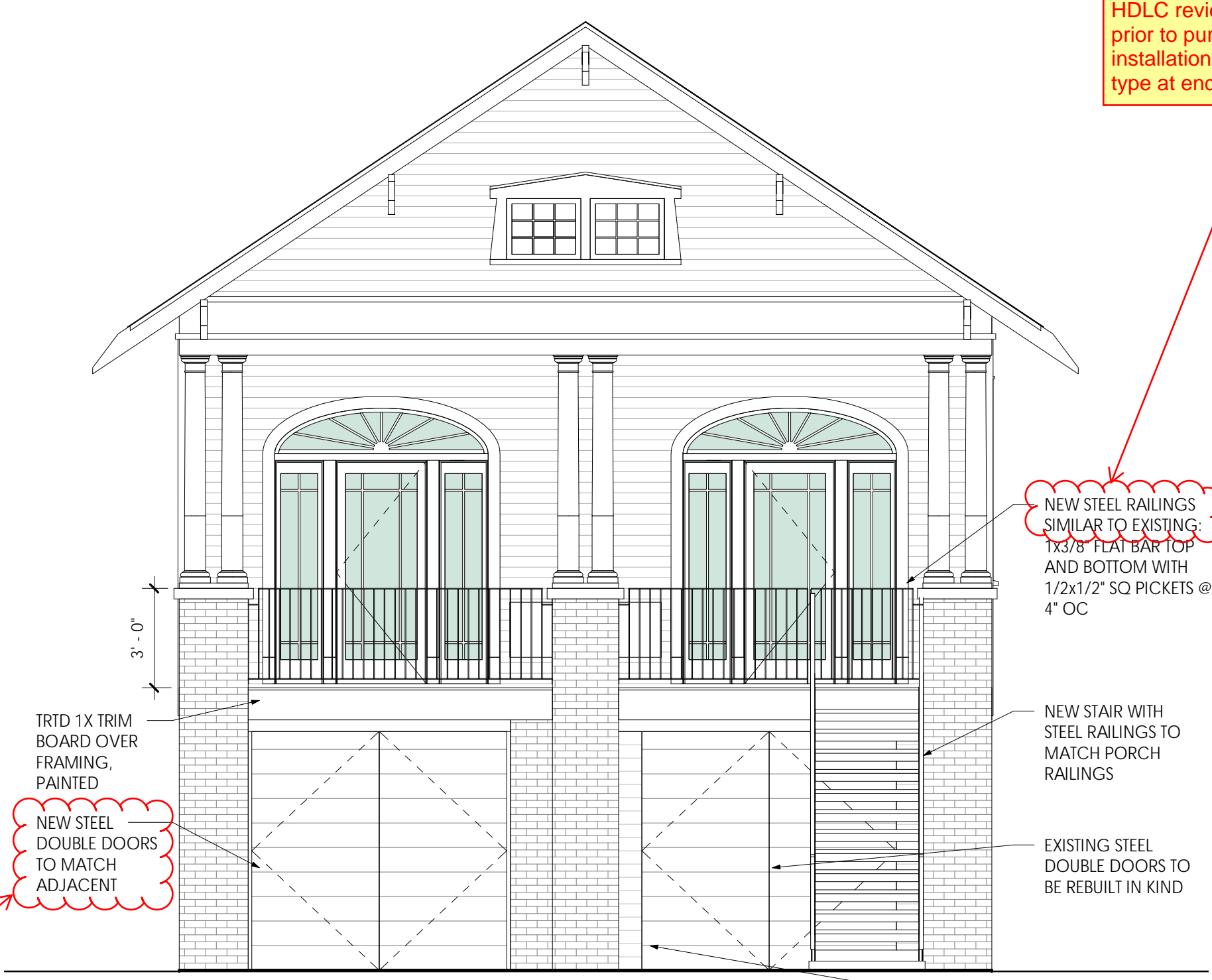


5 ELEV. SIDE (TYPICAL BOTH)
1/4" = 1'-0"

Submit metal railings for HDLC review and approval prior to purchase and installation. See approved type at end of set.

NEW STEEL RAILINGS SIMILAR TO EXISTING: 1x3/8" FLAT BAR TOP AND BOTTOM WITH 1/2x1/2" SQ PICKETS @ 4" OC

To match existing at right in size, shape, configuration, type, operation, materials, dimensions, and detailing.



4 ELEV. OPELOUSAS PROPOSED
1/4" = 1'-0"

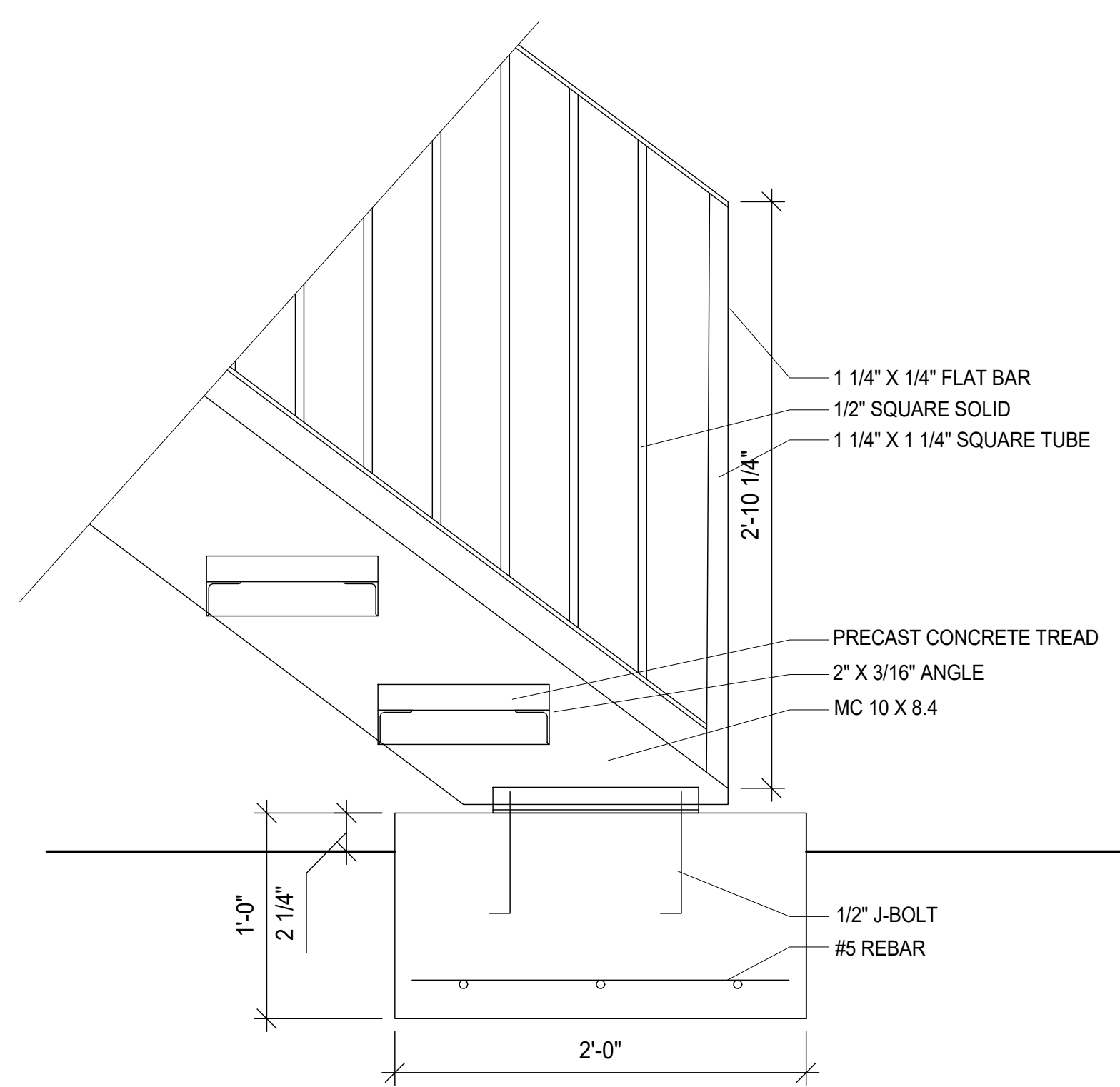
Submit metal railings for HDLC review and approval prior to purchase and installation. See approved type at end of set.

NEW STEEL RAILINGS SIMILAR TO EXISTING: 1x3/8" FLAT BAR TOP AND BOTTOM WITH 1/2x1/2" SQ PICKETS @ 4" OC

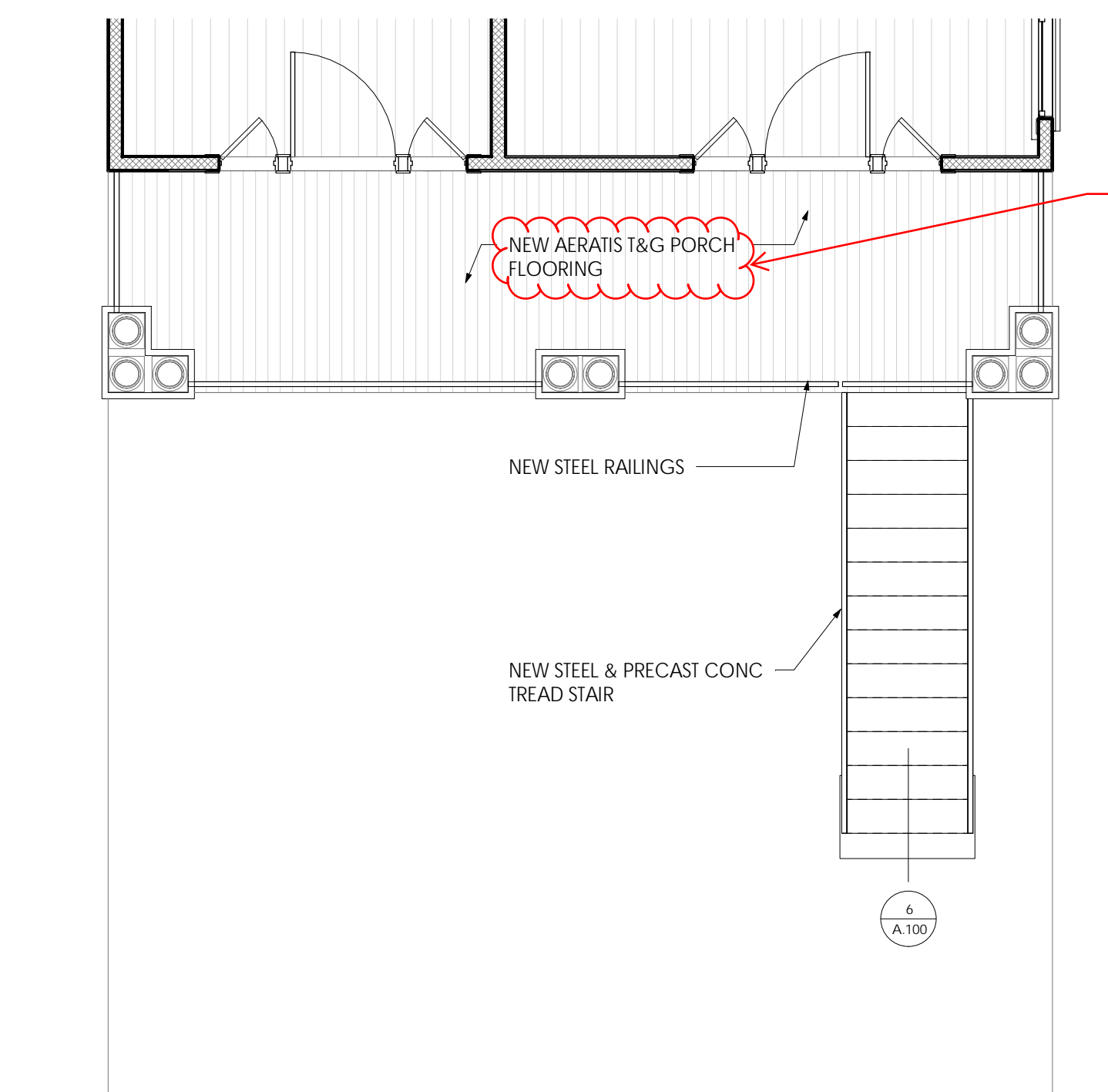
To run perpendicular to the front wall of the building.



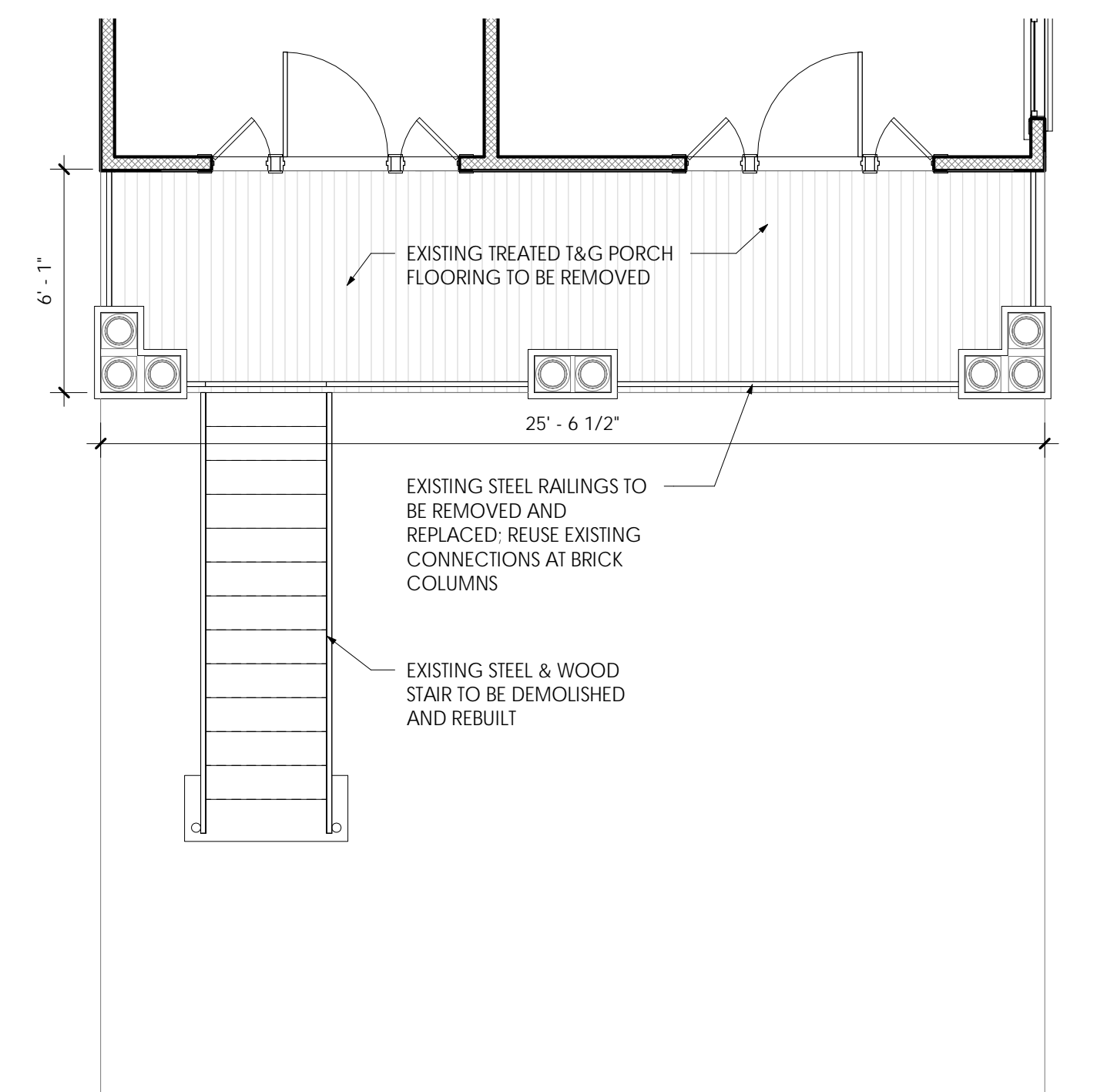
3 ELEV. OPELOUSAS EXISTING
1/4" = 1'-0"



6 STAIR DETAIL
1 1/2" = 1'-0"

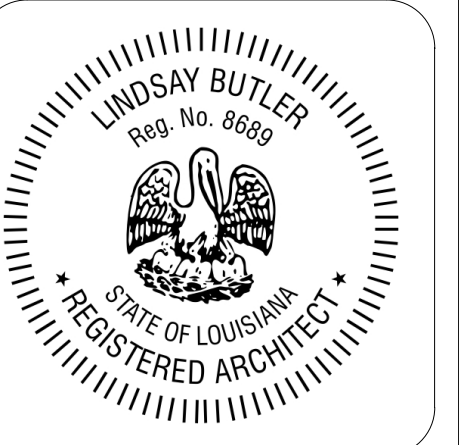


2 01 PLAN - PROPOSED
1/4" = 1'-0"



1 01 PLAN - EXISTING
1/4" = 1'-0"

BELL BUTLER
DESIGN + ARCHITECTURE
1811 HASTINGS PLACE - SUITE B - NEW ORLEANS, LOUISIANA, 70130
www.bellbutler.com



810 OPELOUSAS
810 Opelousas Ave | New Orleans LA | 70114

ISSUE:
PERMIT
DATE:
8/29/2022



ENTRANCE
STAIRS

A.100

