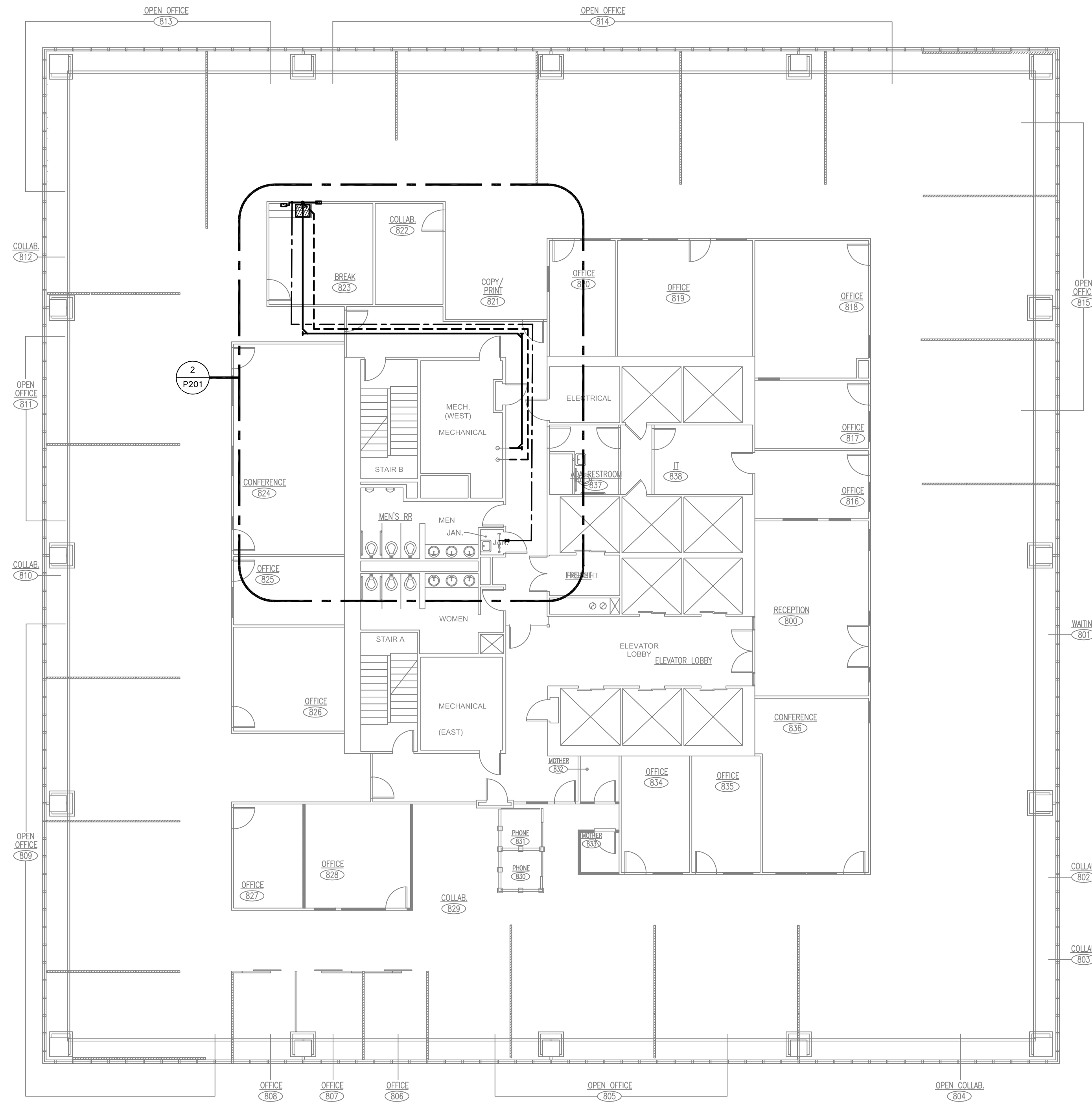


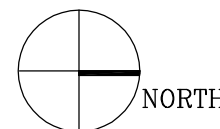
LASALLE ST.

GIROD ST.

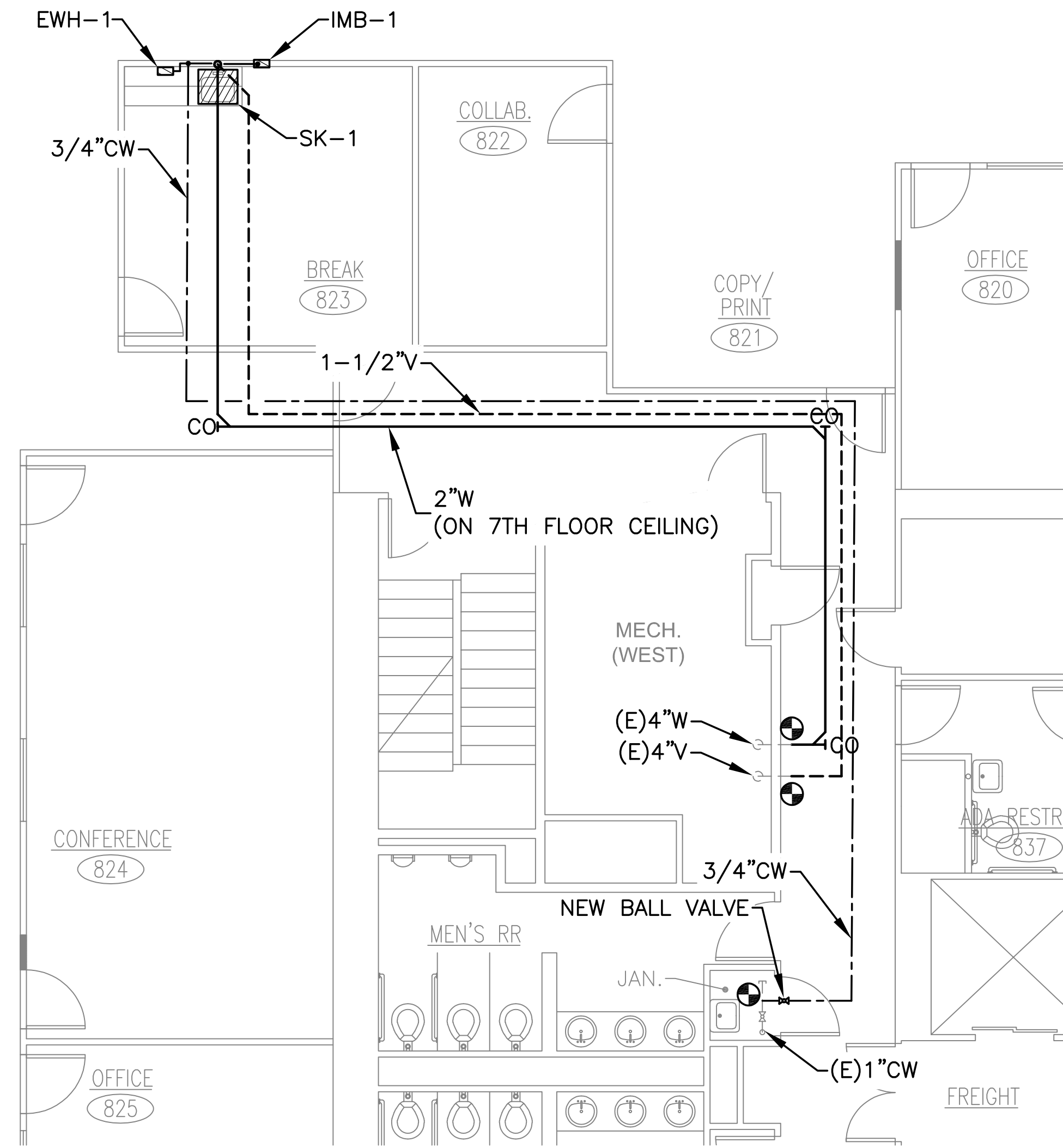


LOYOLA AVE.

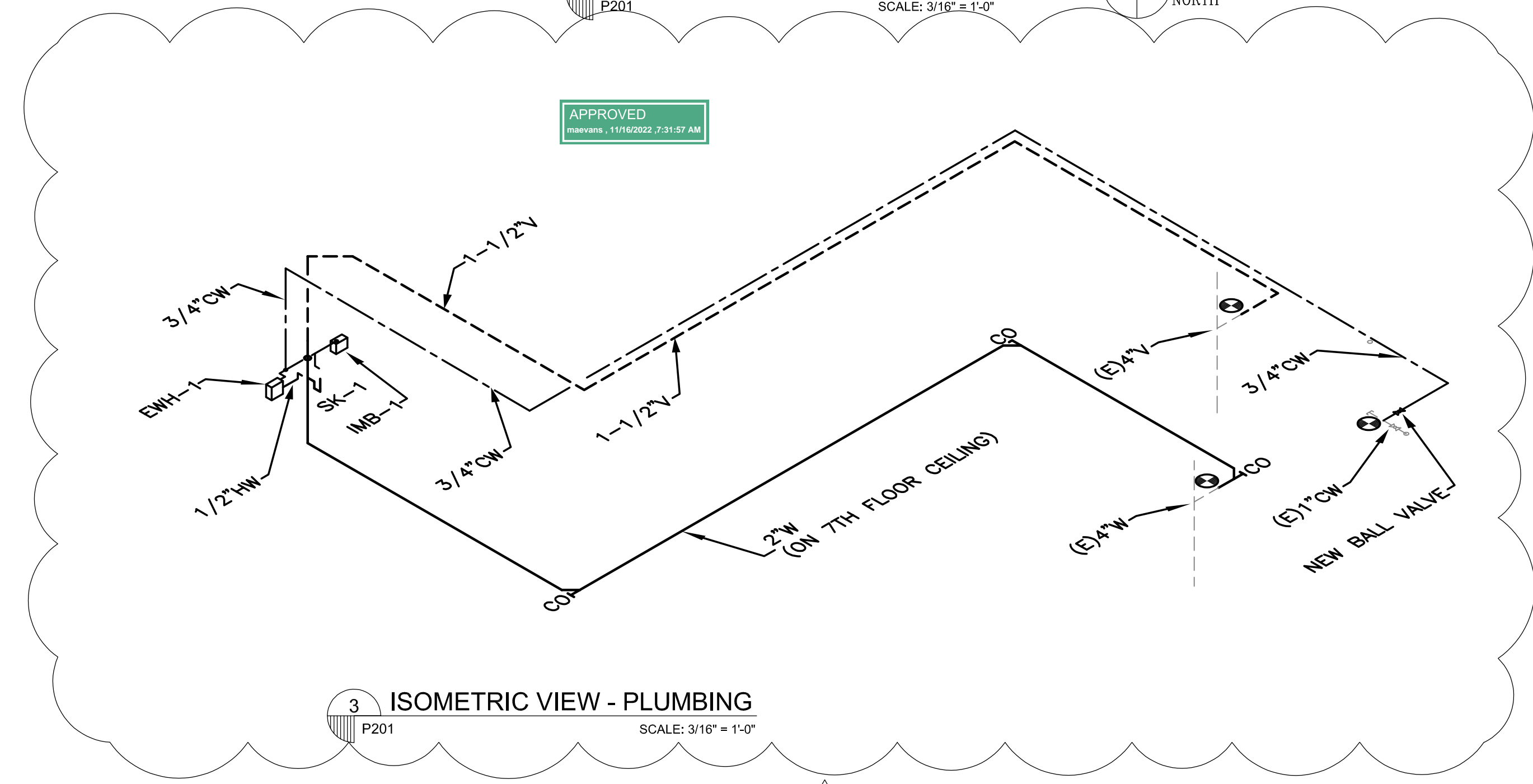
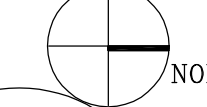
1 FLOOR PLAN - PLUMBING  
SCALE: 3/32" = 1'-0"



POYDRAS ST.



2 ENLARGED PLAN - PLUMBING  
SCALE: 3/16" = 1'-0"



3 ISOMETRIC VIEW - PLUMBING  
SCALE: 3/16" = 1'-0"

APPROVED  
11/16/2022 7:31:57 AM



**HUSEMAN & Associates**

MECHANICAL ■ ELECTRICAL ■ PLUMBING ■ FIRE PROTECTION  
3501 N CAUSEWAY BLVD. (504) 456-3119  
SUITE 710, METAIRIE, LA 70002  
Job No. 220501      Designed By PG  
Drawn By PG      Checked By J/PG



These plans and specifications have been prepared by me in my professional capacity and to the best of my knowledge and belief, they comply with all city requirements. I am not observing the work.  
Architect: M. Claire Pickering  
License No.: 6418

TITLE SHEET  
**OBES**  
ORLEANS TOWER  
1340 POYDRAS ST  
NEW ORLEANS, LA

REV 1	09-09-22
100% SET	05-27-22
TO ENGINEERS	03-22-22
REVISION	03-16-22

PROJECT NO.	-
10012	-

**P201**  
SHEET 1 OF 11