



OPEN EVERY NITE UNTIL 8 30

Marks Isaacs Co.

SHOP EARLY AND MAIL EARLY

AL RIEKE
famous name shoes

PROJECT INFORMATION

PROJECT ADDRESS
717 CANAL STREET
NEW ORLEANS, LA

PROJECT DESCRIPTION / SCOPE
REMOVAL OF EXISTING ALUMINUM FRAME STOREFRONT AND REPLACING WITH TRADITIONAL WOOD BIFOLD DOORS. DOORS TO BE SIZED TO EXISTING FRAME INLINE WITH FENESTRATION ABOVE. COLORS AND MATERIAL TO MATCH EXISTING ADJACENT PROPERTIES. NO CHANGE IN HEAD HEIGHT. NO STRUCTURAL WORK OR CHANGE TO EXTERIOR PAVING.

BUILDING AREA
4,754
(NO CHANGE TO AREA OR FAR)

CONSTRUCTION TYPE
IBC 2015: TYPE III(B) SPRINKLERED NFPA 13
NFPA 2015: TYPE III SPRINKLERED NFPA 13

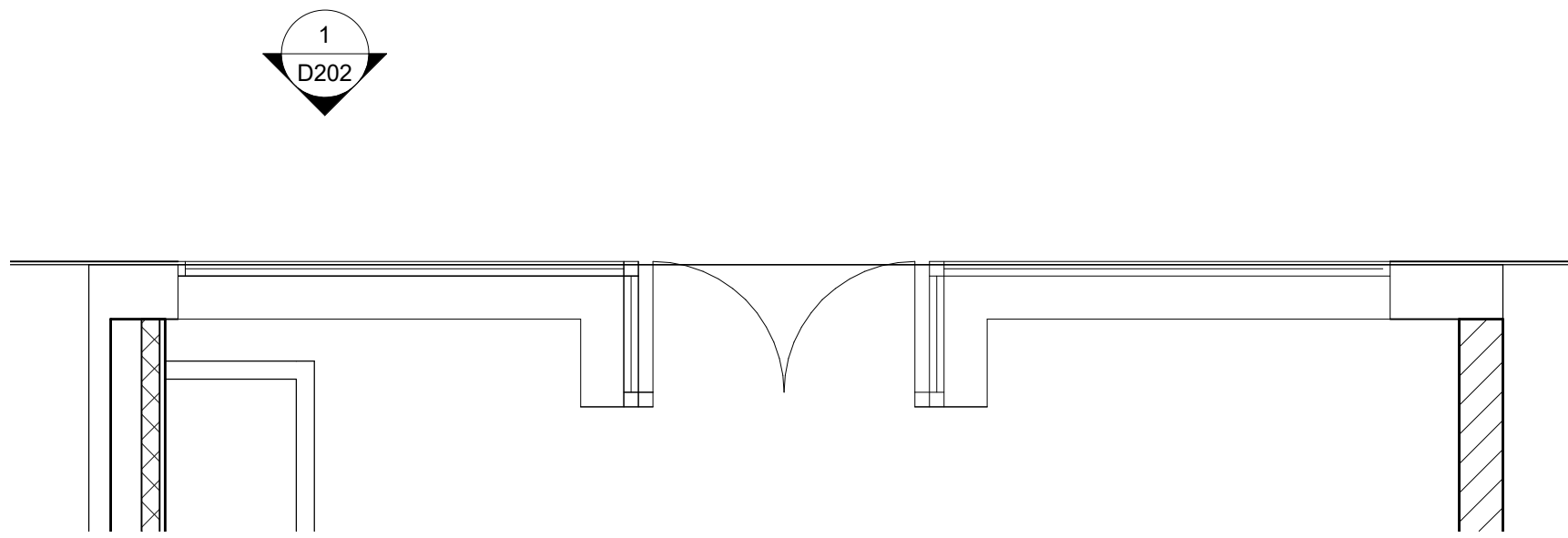
ZONING:
CBD-2 HISTORIC COMMERCIAL AND MIXED USE DISTRICT
SQUARE:
LOT: 6
FUTURE DMU - MIXED USE DOWNTOWN
CBD - HDLC CONTROL: FULL

BUILDING CODE REQUIREMENTS:
NFPA 101 - LIFE SAFETY CODE, 2015 ED.
INTERNATIONAL BUILDING CODE, 2015 ED.
INTERNATIONAL EXISTING BUILDING CODE, 2015 ED
INTERNATIONAL PLUMBING CODE, 2015 ED.
INTERNATIONAL MECHANICAL CODE, 2015 ED.
NATIONAL ELECTRICAL CODE (NFPA-70)
ADA 2010

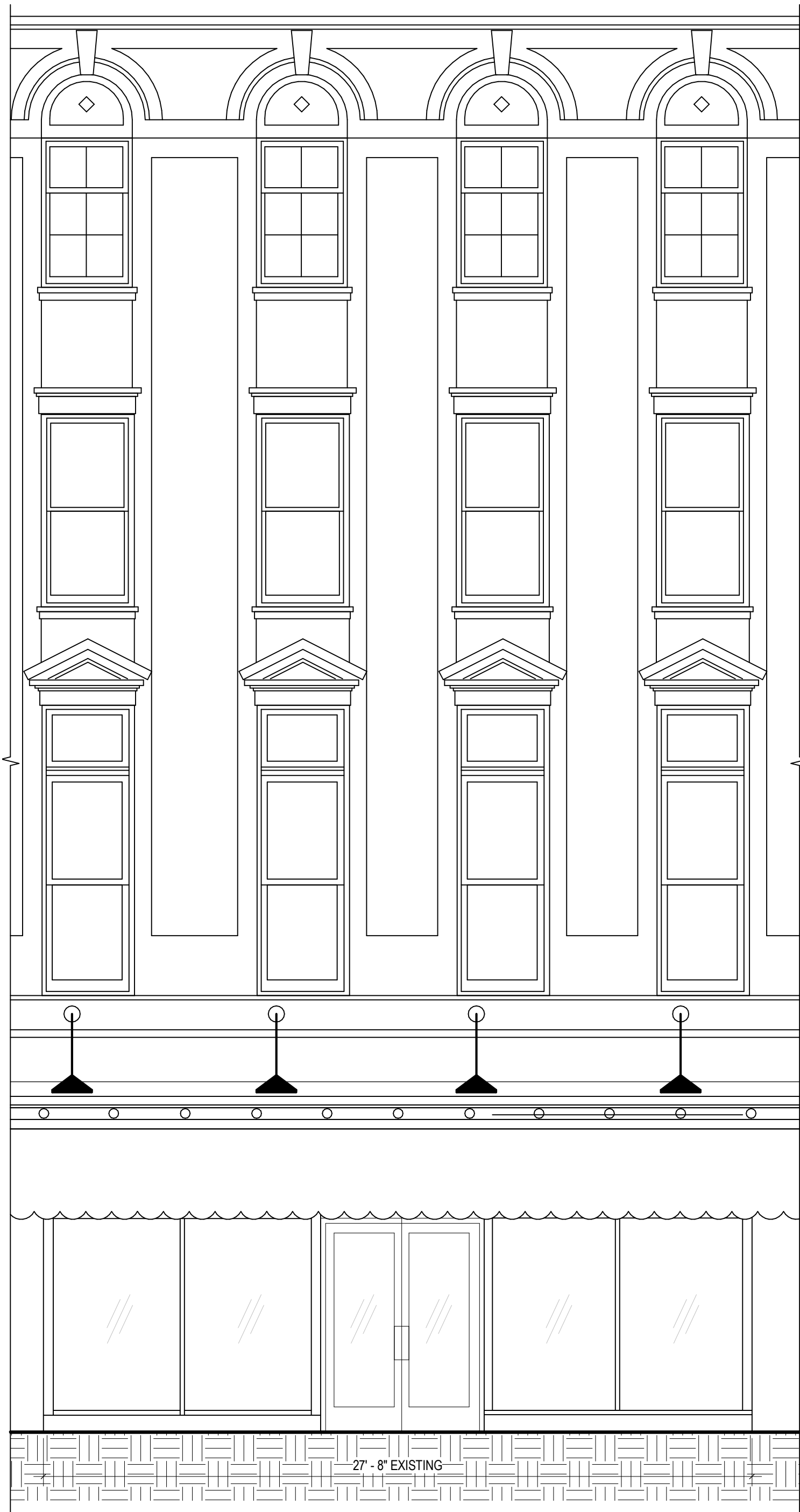
CONTACT INFORMATION

ARCHITECT
WILLIAMS ARCHITECTS
824 BARONNE ST
NEW ORLEANS, LA 70113
(504) 566-0888

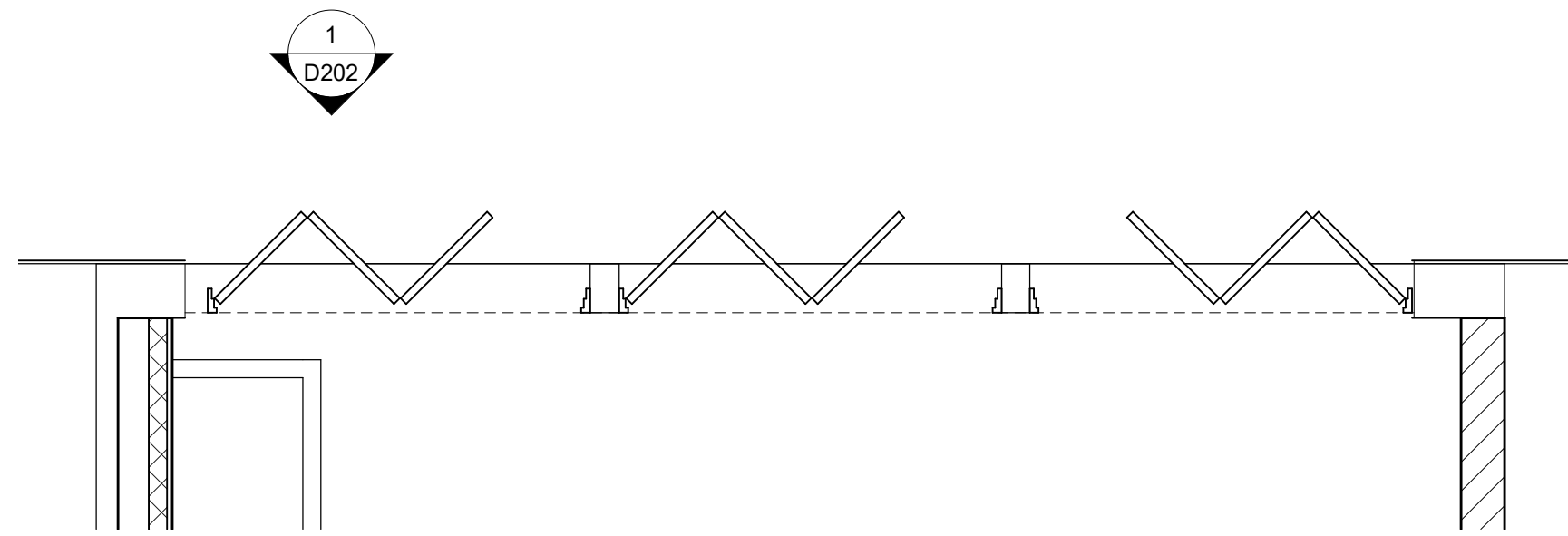
PROJECT MANAGER: PATRICK CAPELLA
pcapella@williamsarchitects.com



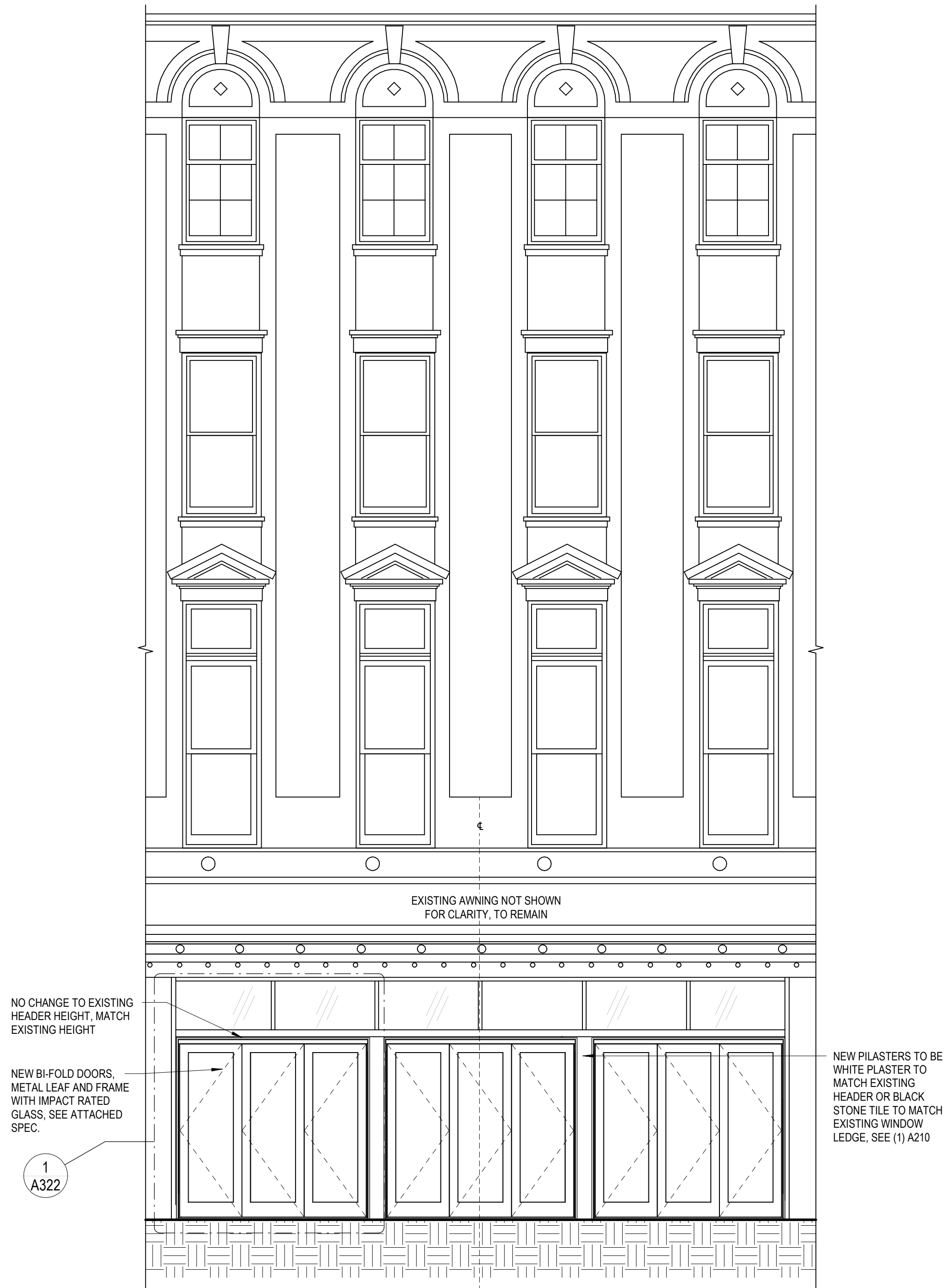
4 A201 STOREFRONT PLAN EXISTING
1/4" = 1'-0"



2 A201 EXTERIOR STOREFRONT ELEVATION EXISTING
1/4" = 1'-0"



3 A201 STOREFRONT PLAN EXISTING
1/4" = 1'-0"



1 A201 EXTERIOR STOREFRONT ELEVATION PROPOSED
1/4" = 1'-0"



WILLIAMS ARCHITECTS
824 BARONNE STREET
NEW ORLEANS, LA 70113

504-566-0888
WILLIAMSARCHITECTS.COM

These drawings and specifications have been prepared by me or under my close personal supervision and to the best of my professional knowledge and belief comply with applicable codes and requirements.

I (will) ~~will not~~ be providing project construction administrative services on this project.

x. _____

Copyright © 2019
John C Williams Architects LLC

717 CANAL STREET - BLUE BAYOU
717 Canal StNew Orleans, LA 70130

-REVISIONS-

No.	Date	Scope

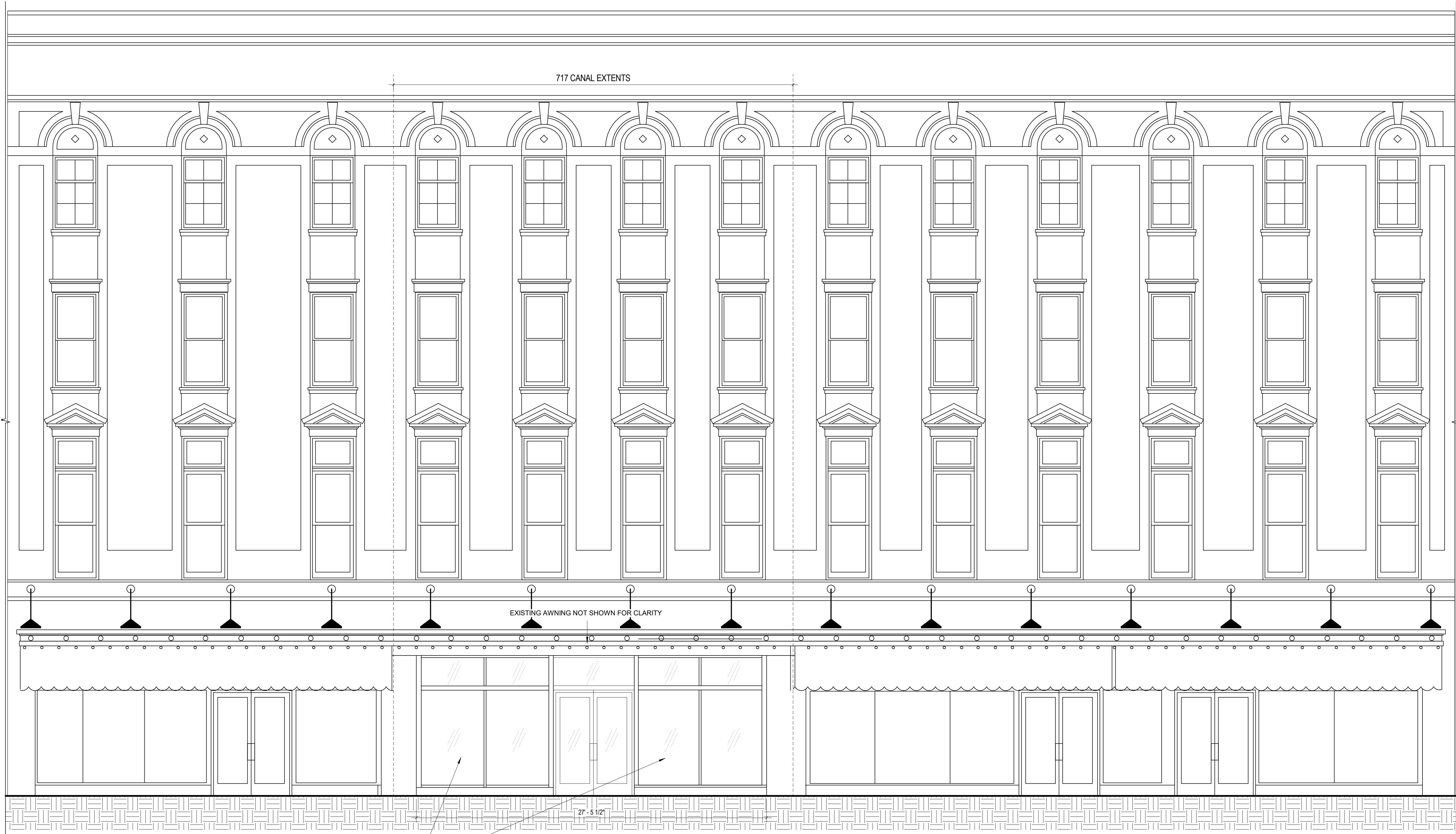
DRAWING
EXTERIOR ELEVATIONS

DRAWING BY
SCALE 1/4" = 1'-0"
JOB No. 522005
DATE 8/26/2022

Sheet No.

A201

9/9/2022 1:12:16 PM P:\522005.00 - 717 Canal Motwan\Drawings\03_REVIT\717 CANAL 9.9.rvt



EXTERIOR STOREFRONT
ELEVATION EXISTING - FULL
BUILDING

1
A202

1/4" = 1'-0"



WILLIAMS ARCHITECTS
824 BARONNE STREET
NEW ORLEANS, LA 70113
504-566-0888
WILLIAMSARCHITECTS.COM

These drawings and specifications have been prepared by me or under my close personal supervision and to the best of my professional knowledge and belief comply with applicable codes and requirements.
I (will) ~~will not~~ be providing project construction administrative services on this project.

x _____

Copyright © 2019
John C Williams Architects LLC

717 CANAL STREET - BLUE BAYOU
717 Canal StNew Orleans, LA 70130

-REVISIONS-		
No.	Date	Scope

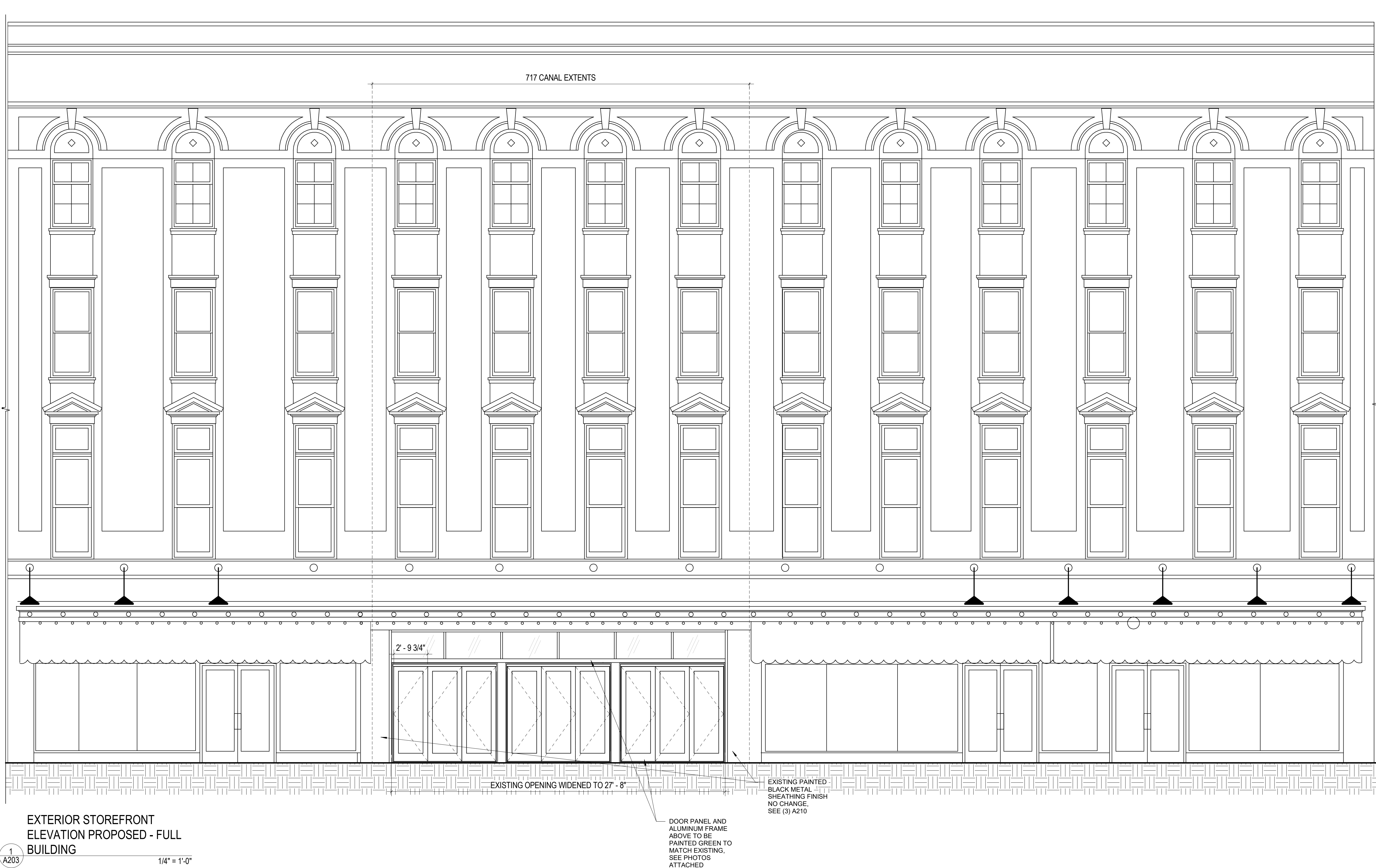
DRAWING
EXTERIOR ELEVATIONS

DRAWING BY	Author
SCALE	1/4" = 1'-0"
JOB No.	522005
DATE	8/26/2022

Sheet No.

A202

9/9/2022 1:12:17 PM P:\522005\00 - 717 Canal Mohan\Drawings\03_REVIT\717 CANAL 9.9.rvt



WILLIAMS ARCHITECTS
824 BARONNE STREET
NEW ORLEANS, LA 70113
504-566-0888
WILLIAMSARCHITECTS.COM

These drawings and specifications have been prepared by me or under my close personal supervision and to the best of my professional knowledge and belief comply with applicable codes and requirements.
I (will) ~~will not~~ be providing project construction administrative services on this project.

x _____

Copyright © 2019
John C Williams Architects LLC

717 CANAL STREET - BLUE BAYOU
717 Canal StNew Orleans, LA 70130

-REVISIONS-		
No.	Date	Scope

DRAWING
EXTERIOR ELEVATIONS

DRAWING BY PC
SCALE 1/4" = 1'-0"
JOB No. 522005
DATE 8/26/2022
Sheet No.

A203



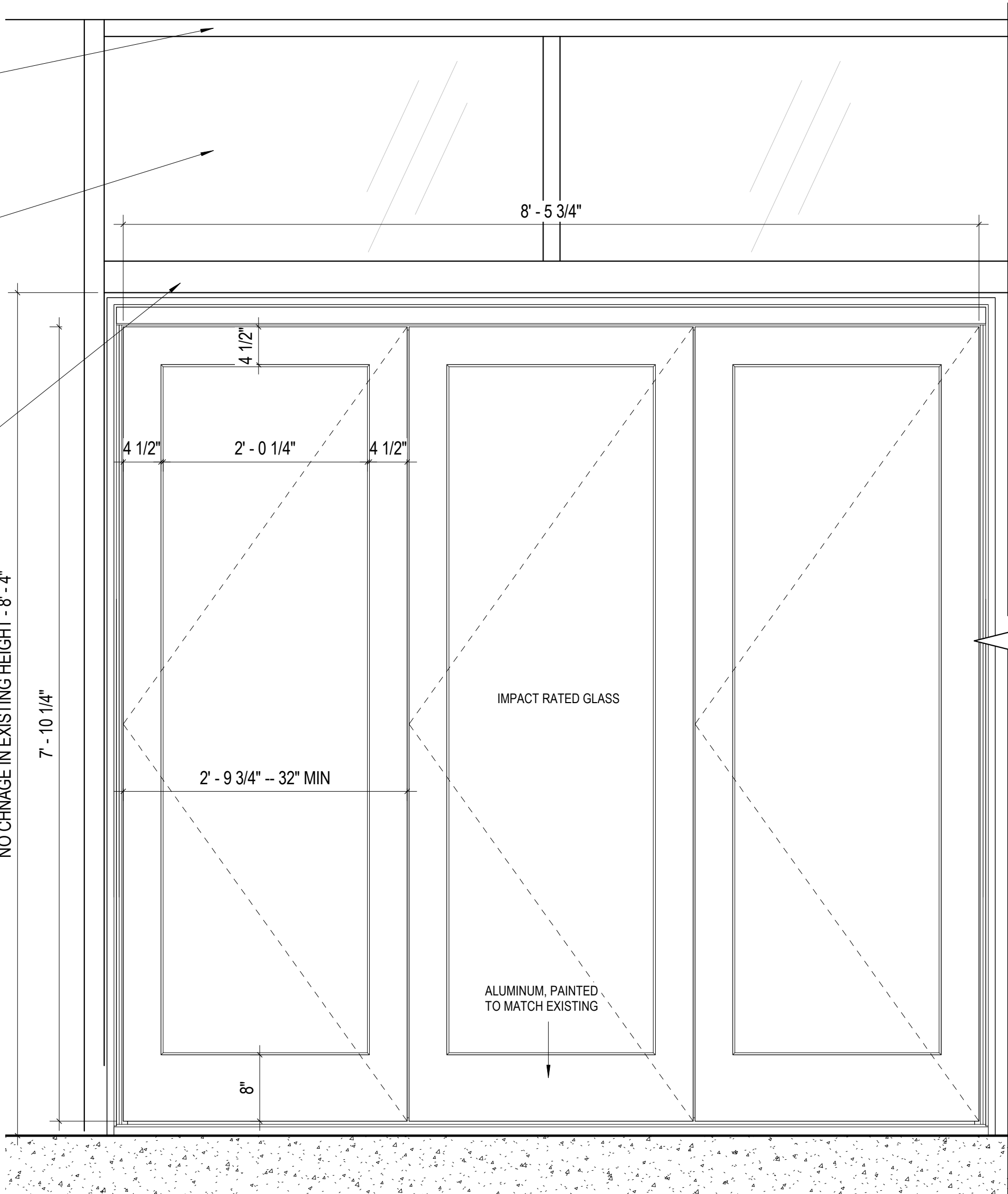
EXISTING METAL
CLAD FINISH TO
REMAIN

EXISTING FRAME
TO REMAIN

EXISTING GLAZING
TO BE MATCHED IN
SIZE AND STYLE
WHERE NEEDED, NO
CHANGE IN HEIGHT

EXISTING FRAME
TO BE MATCHED,
EXTEND ACROSS
ENTIRE DOOR AND
MATCH EXISTING,
MATERIAL ADDED
ON INTERIOR SIDE
TO ACCOM. INSET

REMOVE TILE
WHERE NEEDED



EXTERIOR STOREFRONT
ELEVATION PROPOSED - Callout

1
A322 1" = 1'-0"



WILLIAMS ARCHITECTS
824 BARONNE STREET
NEW ORLEANS, LA 70113
504-566-0888
WILLIAMSARCHITECTS.COM

These drawings and specifications have been prepared by me or under my close personal supervision and to the best of my professional knowledge and belief comply with applicable codes and requirements.
I (will) ~~will not~~ be providing project construction administrative services on this project.

x _____

Copyright © 2019
John C Williams Architects LLC

717 CANAL STREET - BLUE BAYOU
717 Canal StNew Orleans, LA 70130

-REVISIONS-		
No.	Date	Scope

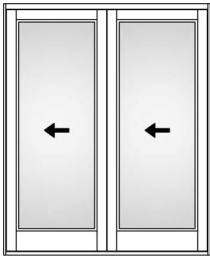
DRAWING
EXTERIOR DOORS
ENLARGED

DRAWING BY	PC
SCALE	1" = 1'-0"
JOB No.	522005
DATE	8/26/2022

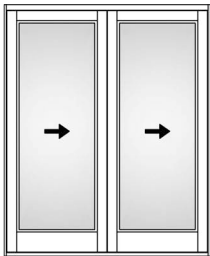
Sheet No.

A322

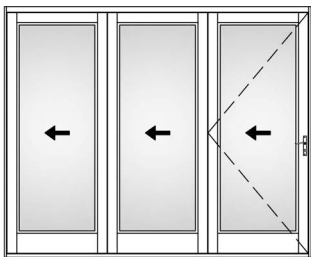
Configurations



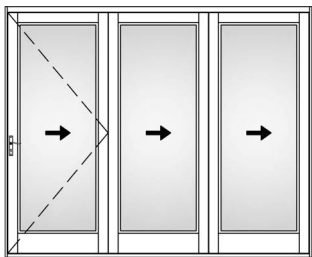
2 Panel + 0 RH Primary



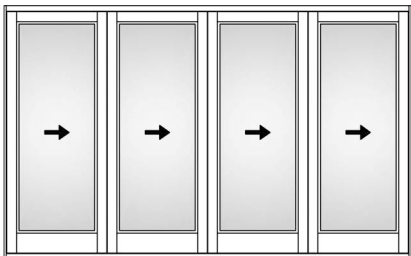
0 + 2 Panel LH Primary



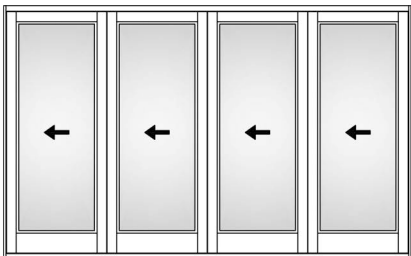
3 Panel + 0 RH Primary



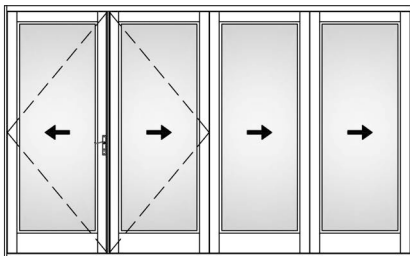
0 + 3 Panel LH Primary



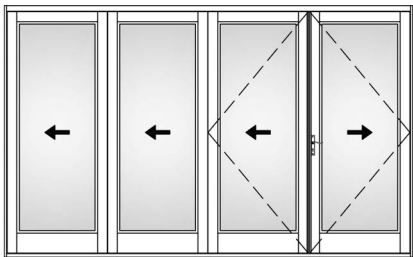
0 + 4 LH Primary



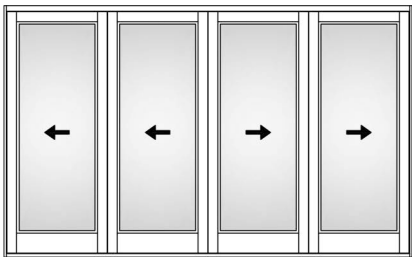
4 + 0 RH Primary



1 + 3 LH Primary

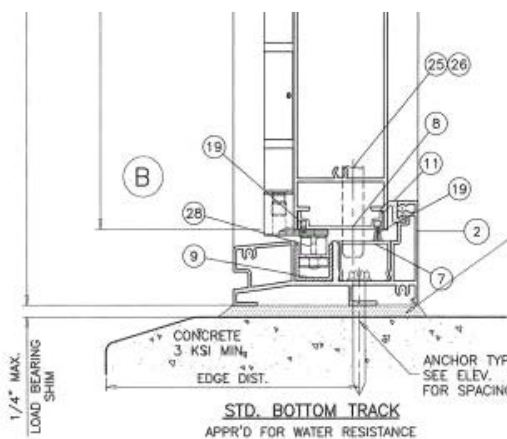
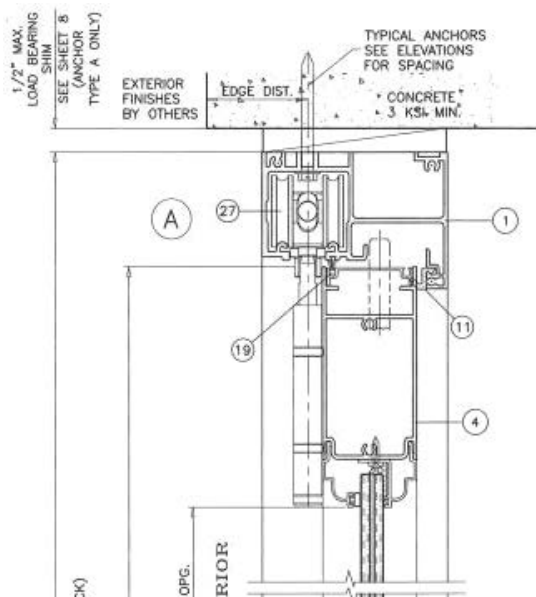


3 + 1 RH Primary



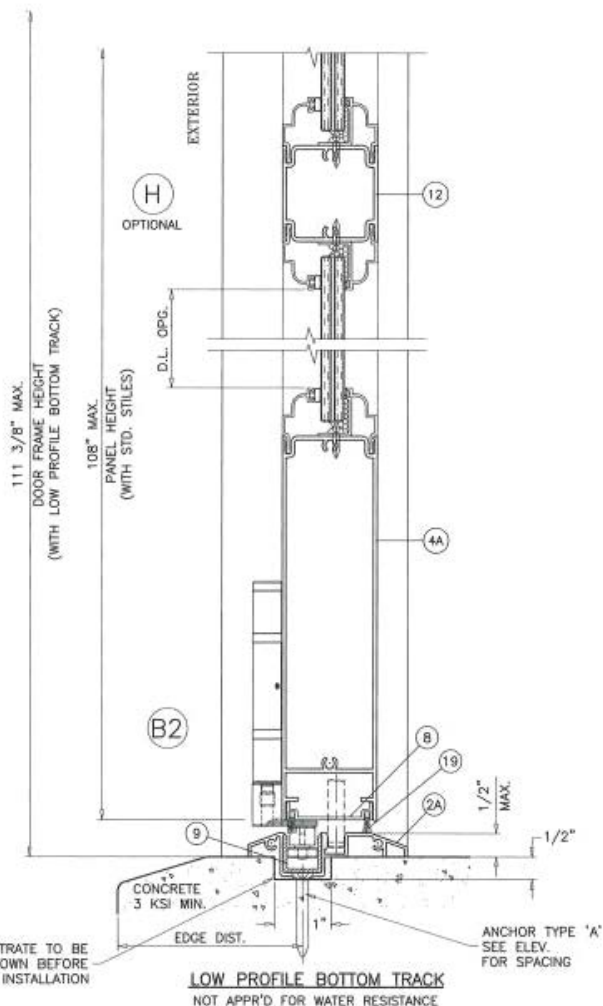
2 + 2

Vertical Section Details

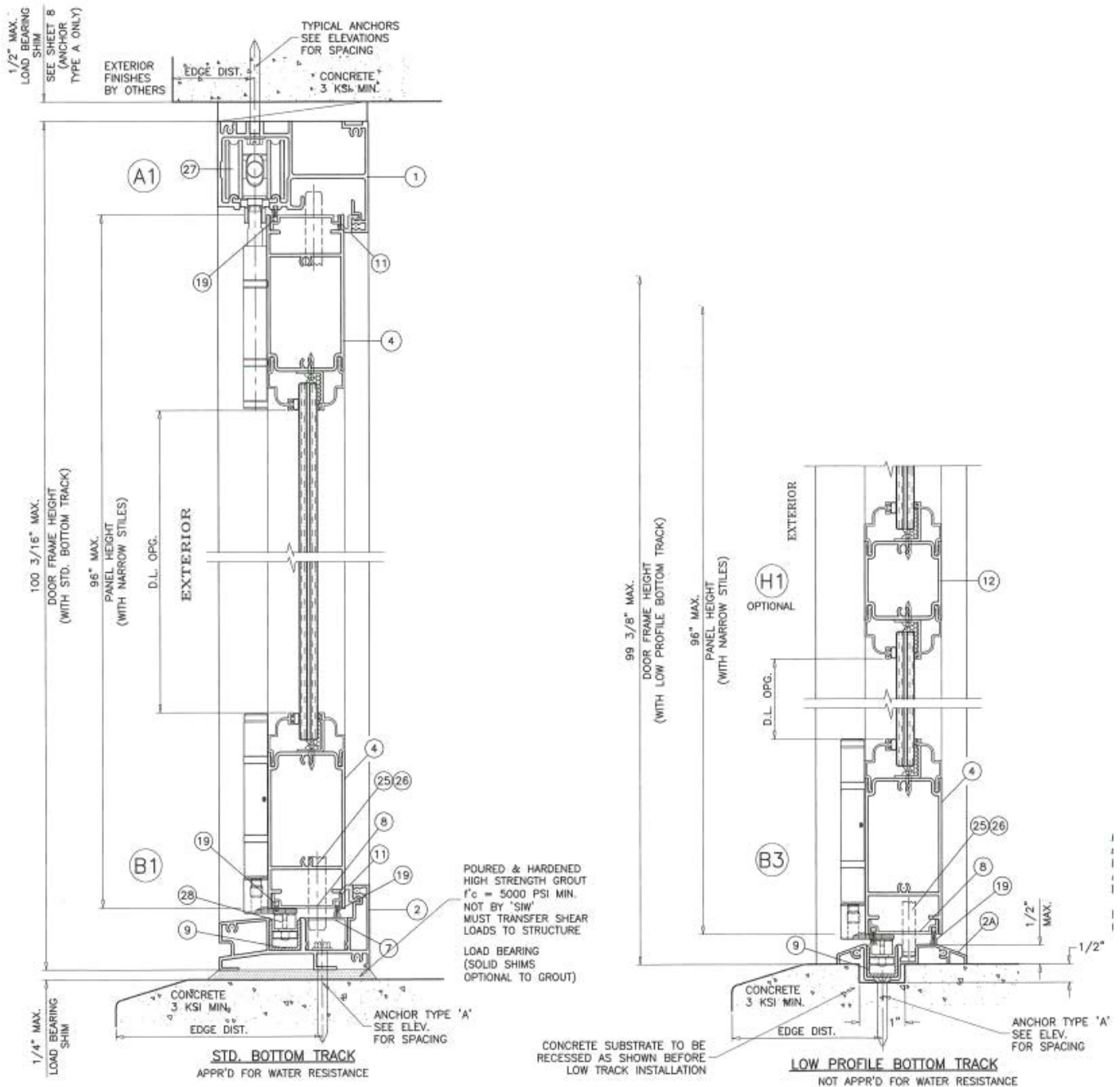


POURED & HARDENED HIGH STRENGTH GROUT f'c = 5000 PSI MIN. NOT BY 'SIW' MUST TRANSFER SHEAR LOADS TO STRUCTURE
LOAD BEARING (SOLID SHIMS OPTIONAL TO GROUT)

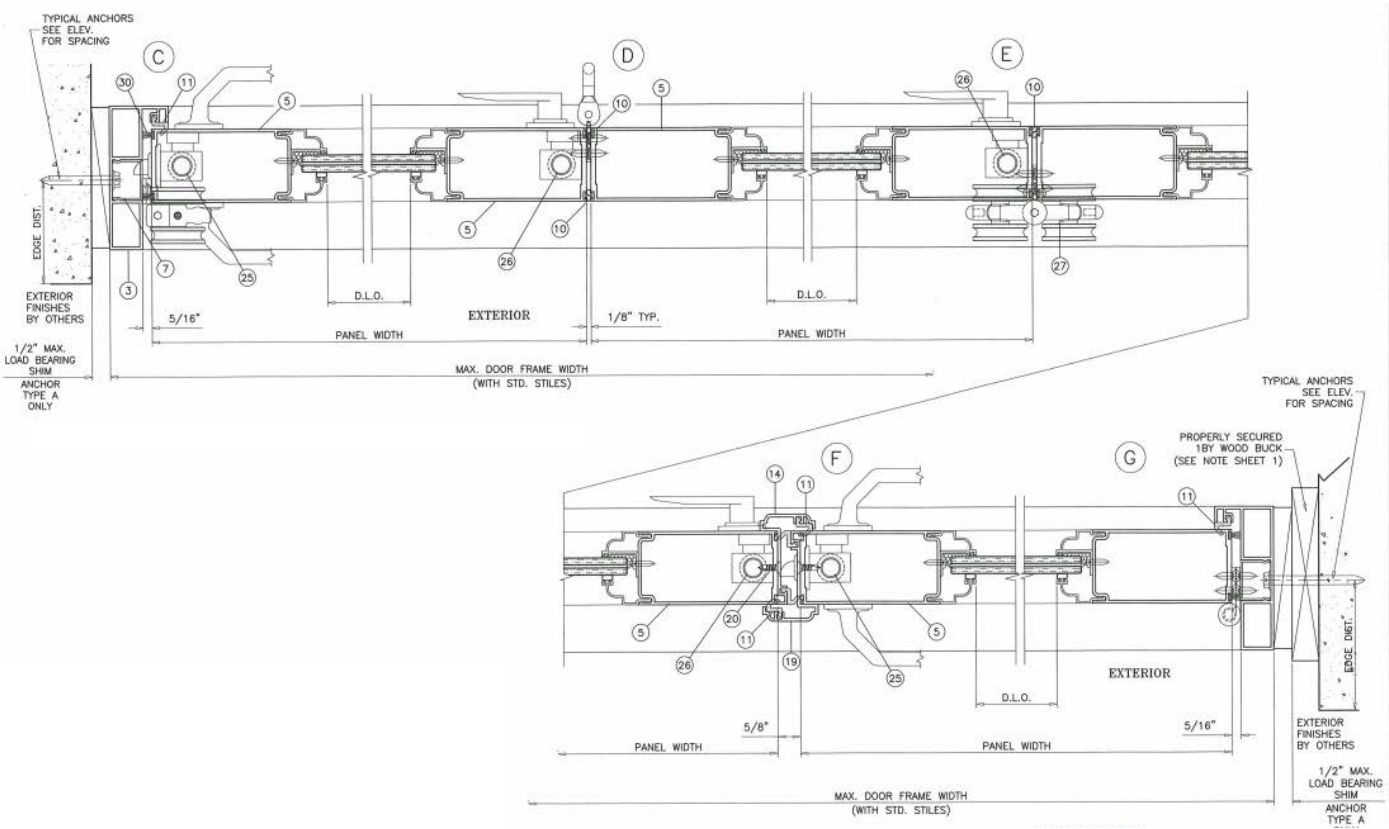
CONCRETE SUBSTRATE TO BE RECESSED AS SHOWN BEFORE LOW TRACK INSTALLATION



Vertical Section Details



Horizontal Section Details



Technical drawings of door frame cross-sections for narrow stiles.

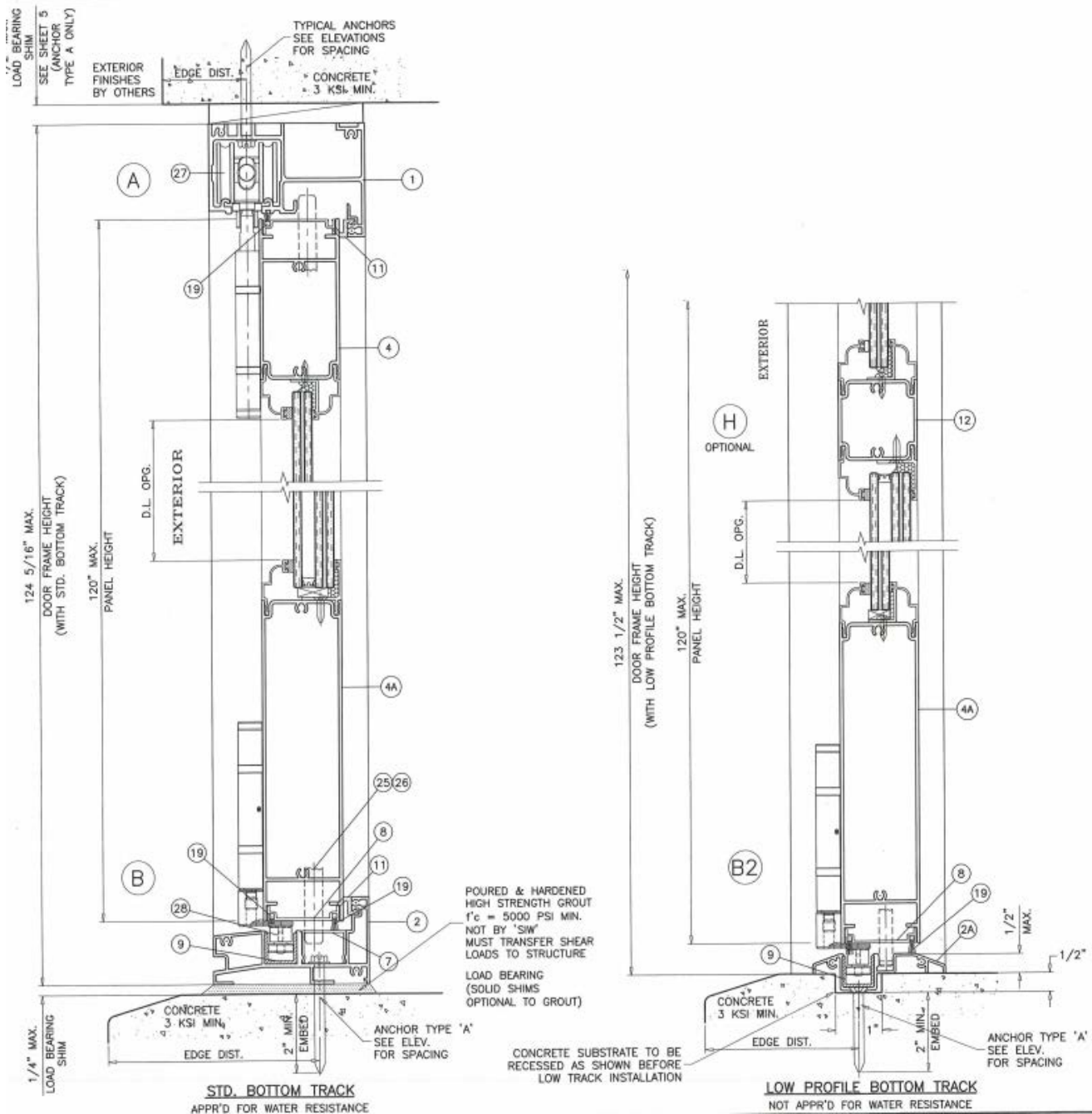
Top Drawing (Cross-section of door frame with narrow stiles):

- Callouts: C1, D1, E1.
- Dimensions: 5/16", D.L.O., 1/8" TYP., PANEL WIDTH, MAX. DOOR FRAME WIDTH WITH NARROW STILES.
- Notes: TYPICAL ANCHORS SEE ELEV. FOR SPACING, EXTERIOR FINISHES BY OTHERS, 1/2" MAX. LOAD BEARING SHIM ANCHOR TYPE A ONLY.

Bottom Drawing (Cross-section of door frame with narrow stiles):

- Callouts: F1, G1.
- Dimensions: 5/8", D.L.O., 5/16", PANEL WIDTH, MAX. DOOR FRAME WIDTH WITH NARROW STILES.
- Notes: TYPICAL ANCHORS SEE ELEV. FOR SPACING, EXTERIOR FINISHES BY OTHERS, 1/2" MAX. LOAD BEARING SHIM ANCHOR TYPE A ONLY, PROPERLY SECURED 1BY WOOD BUCK (SEE NOTE SHEET 1).

Section Details



Section Details

