

**6** KW DC PV SYSTEM

**Optimal Location**

 24 250W Solar PV Panels  
 Hyundai: HiS-M250MG

**88523**

 7932 Alabama St Apt A,  
 New Orleans, LA 70126

Array	Modules	Azimuth	Tilt	Yield kWh/kW/yr
1	24	162° S	14°	1,195

**REDEPLOY**
**6.0 SE HYU 250**
**SYSTEM # S-010383**

Approved by \_\_\_\_\_

# SITE PLAN

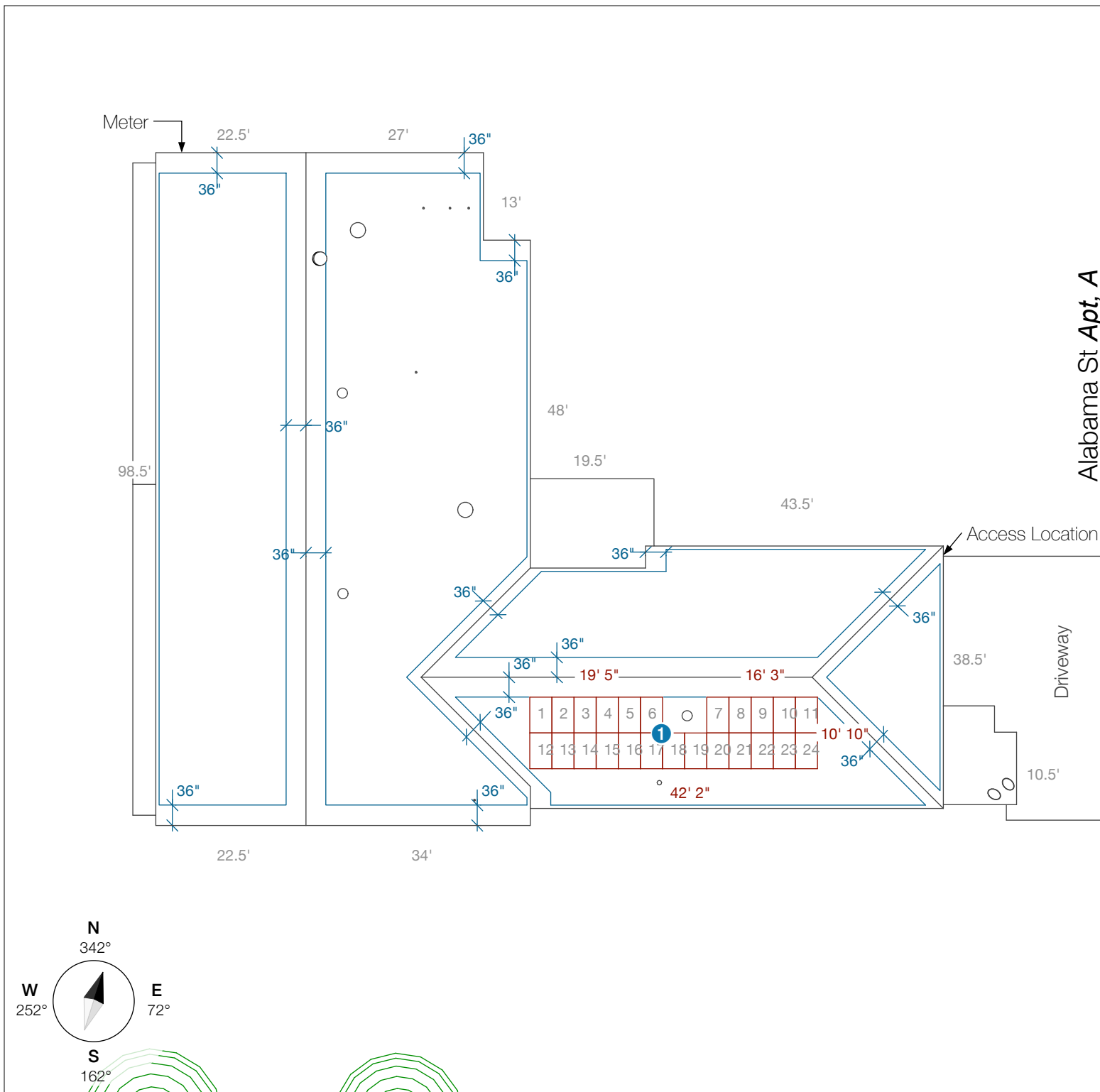
Contractor is responsible for verifying all on-site conditions and measurements, complying with local and national code requirements and manufacturers' manuals.

Drawn: TL. Checked: BHS.

Date: 9/19/2017

Sheet size: 8.5" x 11"

Scale: 1" = 20' (1:240)



Alabama St Apt, A

Driveway

Access Location

Meter

98.5'

22.5'

27'

36"

36"

13'

36"

48'

19.5'

43.5'

36"

36"

Access Location

36"

36"

19' 5"

16' 3"

36"

36"

36"

36"

36"

36"

36"

36"

36"

36"

36"

36"

22.5'

34'

38.5'

10.5'

N

342°

W

252°

E

72°

S

162°