



NEW ORLEANS, LOUISIANA

**PAN AMERICAN LIFE CENTER
SUITE 1850**

601 POYDRAS STREET

CAMP STREET

DATE ISSUED:	20 MAY 2022
REVISED:	8 AUGUST 2022
REVISED:	17 AUGUST 2022
REVISED:	
REVISED:	
DRAWN BY:	JBW
CHECKED BY:	CEV
PHASE:	

CONSTRUCTION DOCUMENTS

21004-N

TITLE:
REFLECTED CEILING PLAN

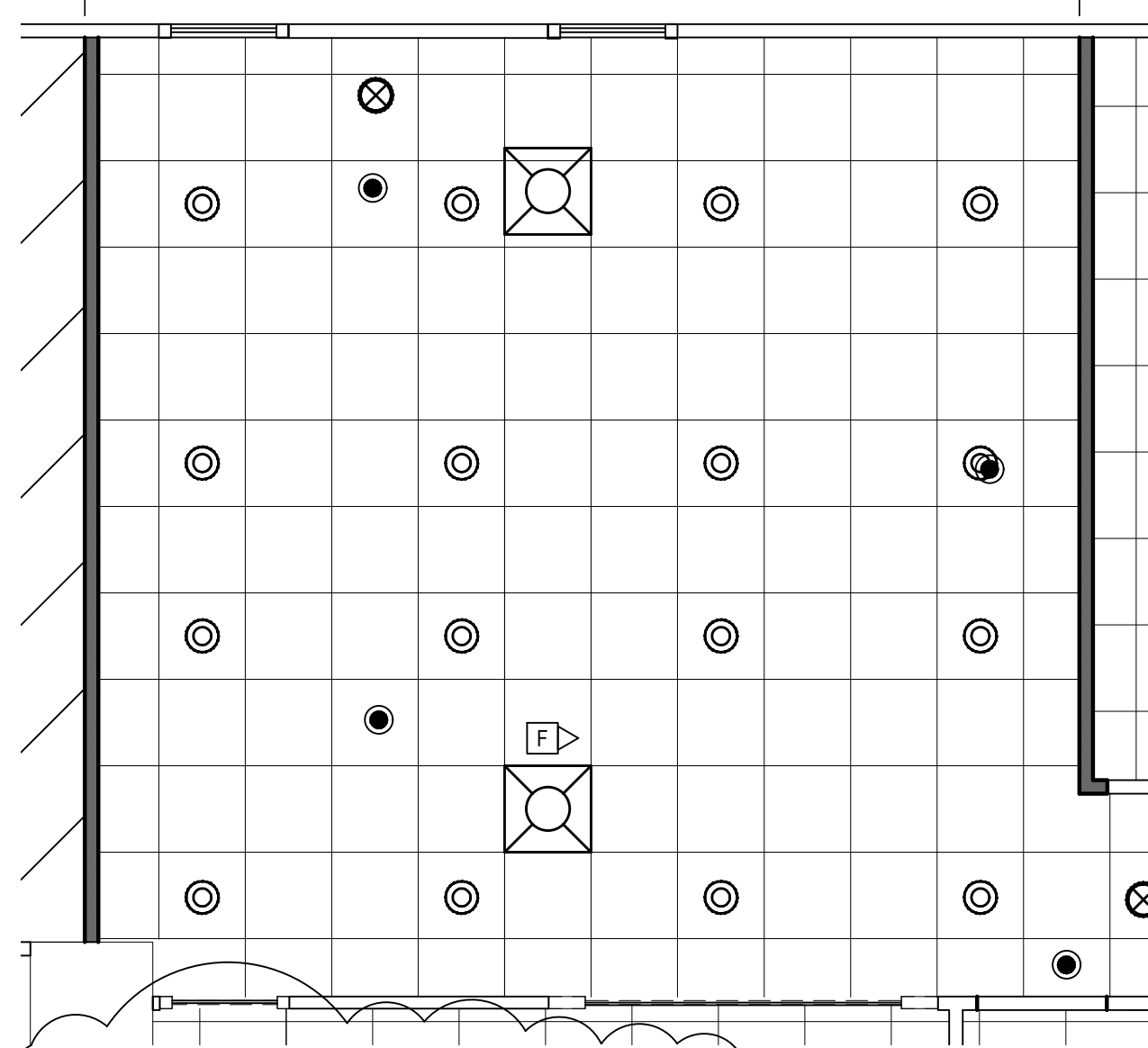
SHEET:
A7.00



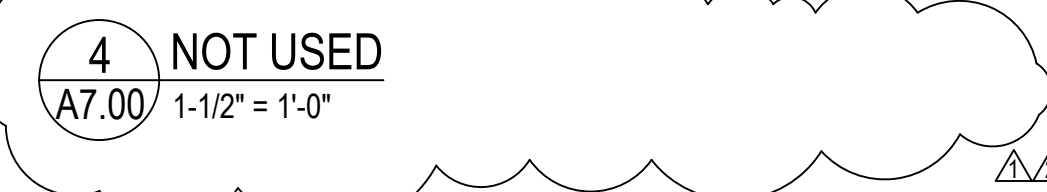
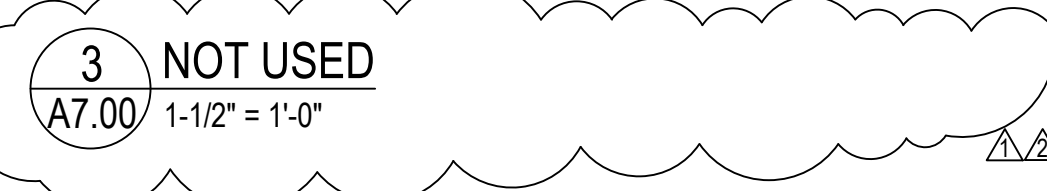
1 REFLECTED CEILING PLAN
A7.00 1/8" = 1'-0"

LEGEND:

	EXISTING OR NEW TO MATCH EXISTING 2X2 RE-LAMPED LED LIGHT FIXTURE
	EXIT SIGN- SEE ELECTRICAL
	LED RECESSED CAN LIGHT- SEE ELECTRICAL
	FIRE ALARM STROBE- SEE ELECTRICAL
	SPRINKLER HEAD - SEE MECHANICAL
	HVAC DEVICE- SEE MECHANICAL



2 ENLARGED PLAN- RECEPTION
A7.00 1/8" = 1'-0"



GENERAL NOTES:

1. NEW 2X2 BUILDING STANDARD ACOUSTICAL CEILING TILE GRID AND TILES TO BE INSTALLED. CEILING HEIGHT TO BE 9'-0" UNLESS NOTED OTHERWISE.
2. EXISTING 2X2 LIGHT FIXTURES TO BE RE-LAMPED AS 3500 LED.
3. ALL NEW OR RELOCATED FIXTURES, DEVICES AND SPRINKLER HEADS SHOULD BE CENTERED IN THE CEILING TILE.
4. RELOCATE SPRINKLER HEADS TO AVOID CONFLICT WITH THE NEW LAYOUT. SPRINKLER SYSTEM SHALL COMPLY WITH NFPA-12 & NFPA-13. SEE MECHANICAL.
5. RELOCATE MECHANICAL FIXTURES AS REQUIRED TO MEET THE NEW LAYOUT, SEE MECHANICAL DRAWINGS.
6. RELOCATE ANY EXISTING FIRE ALARM DEVICES AS REQUIRED TO MEET THE NEW LAYOUT.

POYDRAS STREET