

SPECIFICATIONS

SECTION 26 0500 – COMMON WORK FOR ELECTRICAL

DIVISION OF SPECIFICATIONS:

THIS DIVISION OF THE SPECIFICATIONS IS DIVIDED INTO THE FOLLOWING SECTIONS WHICH, WITH THEIR RESPECTIVE SUBSECTIONS, IS FOR CONVENIENCE ONLY AND NOT INTENDED TO ESTABLISH LIMITS OF WORK:

SECTION 26 0500 – COMMON WORK FOR ELECTRICAL  
SECTION 26 0501 – ELECTRICAL RELATED WORK  
SECTION 26 0533 – RACEWAYS AND BOXES FOR ELECTRICAL SYSTEMS  
SECTION 26 0519 – LOW VOLTAGE ELECTRICAL POWER CONDUCTORS AND CABLES  
SECTION 26 2726 – WIRING DEVICES  
SECTION 26 0553 – IDENTIFICATION FOR ELECTRICAL SYSTEMS  
SECTION 26 0528 – GROUNDING AND BONDING  
SECTION 26 2416 – PANELBOARDS  
SECTION 26 2816 – ENCLOSED SWITCHES AND CIRCUIT BREAKERS  
SECTION 28 3111 – FIRE ALARM SYSTEMS  
SECTION 27 0000 – TELEPHONE/DATA SYSTEM

- COMPLY WITH LOCAL AND STATE CODES, OSHA, NEC, TIA, NFPA, IBC REQUIREMENTS, AND NATIONAL CODES.
- COMPLETELY GROUND ENTIRE ELECTRICAL SYSTEM AS PER NATIONAL ELECTRICAL CODE.
- APPLY FOR PERMIT AND PAY ALL FEES. PROVIDE FINAL INSPECTION CERTIFICATE.
- WORKMANSHIP TO MEET NECA. GUIDELINES.
- PUT INTO OPERATION AND TEST ALL ELECTRICAL EQUIPMENT.
- PROVIDE COMPLETE INSTALLATION, INCLUDING ALL MINOR ITEMS.
- ALL ELECTRICAL EQUIPMENT LOCATIONS ARE APPROXIMATE ONLY. FOR ALL MEASUREMENTS, USE ARCHITECTURAL PLANS AND FIELD SURVEYS. COORDINATE WITH AIR CONDITIONING WORK, CABINET WORK, PARTITION WORK, ETC., WHEN REQUIRED.
- SUBMIT ONE SET OF CLEARLY MARKED REPRODUCIBLE "RECORD" AS-BUILT DRAWINGS FOR ALL WORK, INDICATING CHANGES MADE DURING CONSTRUCTION. SUBMIT TO ARCHITECT FOR OWNER'S RECORD FILE. INSURE THAT ALL CIRCUITRY IS SHOWN AS WIRED IN THE FIELD, TO INCLUDE ACCURATE HOMERUN DESIGNATIONS.
- UNLESS OTHERWISE NOTED ON THE DRAWINGS OR REQUIRED BY THE ARCHITECT, THE FOLLOWING MOUNTING HEIGHTS (CENTERLINE ABOVE FINISHED FLOOR) SHALL APPLY:

TOGGLE SWITCHES	4'-0"
RECEPTACLES	1'-6"
TELEPHONE/DATA/FIBER OPTIC OUTLETS	1'-6"

UPON APPROVAL OF THE ARCHITECT, MOUNTING HEIGHTS MAY BE ADJUSTED. LENGTH OF RECEPTACLES SHALL RUN VERTICALLY. DO NOT MOUNT OUTLETS BACK TO BACK ON OPPOSITE SIDES OF WALLS.

- BIDDER'S SHALL VISIT THE SITE OF THE PROPOSED WORK TO UNDERSTAND THE COMPLEXITY, RESTRICTIONS, AND ALL THE REQUIREMENTS TO PERFORM WORK OF THESE DOCUMENTS IN SAID FACILITY. NO ADDITIONAL COMPENSATION SHALL BE ALLOWED TO THE SUCCESSFUL BIDDER FOR FAILURE TO BE SO INFORMED.
- SEAL ALL FLOOR, DEMISING WALL, AND FIRE WALLS WITH 3M FIRE PROOF PUTTY OR OWNER APPROVED EQUAL. ALL FIRE PROOFING SHALL BE CERTIFIED.
- ALL WORK IN FLOOR SLABS INCLUDING CORING, CHOPPING OR CHASING SHALL BE PROPOSED TO THE OWNER AND WRITTEN PERMISSION GRANTED BEFORE ACTUAL PERFORMANCE. X-RAY ALL PENETRATIONS, AFTER HOURS WITH A BUILDING ENGINEER PRESENT. CONTRACTOR SHALL HIRE MORPHY MAKOFSKY (JON SOFRANKO 504-488-1317) TO APPROVE X-RAYS AND INCLUDE PRICE IN THIS CONTRACT. NO CHASING OF SHAFT WALLS SHALL BE PERMITTED.

SECTION 26 0501 – ELECTRICAL RELATED WORK

- ALL DRILLING OF FLOORS SHALL BE PERFORMED AFTER NORMAL WORKING HOURS BETWEEN 5:00 P.M. AND 6:00 A.M.).
- WIRING FOR HVAC: BRING POWER TO HVAC EQUIPMENT AND DUCT HEATERS. INSTALL STARTERS WHERE REQUIRED. STARTERS, FIRESTATS AND CONTROL WIRING FURNISHED UNDER MECHANICAL SECTION. FRACTIONAL STARTERS TO BE SUPPLIED UNDER THIS SECTION.

SECTION 26 0533 – RACEWAYS AND BOXES FOR ELECTRICAL SYSTEMS

- ALL CONDUITS FROM MECHANICAL AND ELECTRICAL ROOMS INTO TENANT SPACE SHALL BE EMT.
- ALL CIRCUIT HOMERUNS SHALL BE EMT. EMT SHALL BE USED, AT A MINIMUM, UP TO THE FIRST DEVICE (WITHIN 15') THE CIRCUIT SERVES.
- MC CABLE SHALL BE USED IN TENANT SPACE EXISTING WALLS. MC CABLE WHIPS SHALL BE USED FOR CONNECTIONS TO LIGHT FIXTURES AND TO ALL VIBRATING EQUIPMENT. MC CABLE MAY BE USED BETWEEN DEVICES ON THE SAME CIRCUIT WITH A MAXIMUM LENGTH OF 40'.
- MC CABLE SHALL NOT BE USED ABOVE HARD AND/OR INACCESSIBLE CEILINGS.
- WHIPS TO LIGHT FIXTURES SHALL BE GIVEN ENOUGH SLACK SUCH THAT THE FIXTURE MAY MOVE 1' CEILING TILE IN ANY DIRECTION.
- ALL CONDUITS MOUNTED IN CEILING SPACE SHALL BE AS CLOSE AS POSSIBLE TO BEAMS AND/OR SLAB ABOVE. ALL JUNCTION BOXES IN CEILING CAVITY TO BE MOUNTED TO STRUCTURE.
- ALL DEVICE JUNCTION BOXES TO BE METAL MIN. 4" X 4" WITH PLASTER RINGS.
- MOUNT ALL BOXES USING UTILITY BRACKETS. IN EXISTING WALLS, USE "REWORK" BOXES. "F" CLIPS ARE NOT ALLOWED.

- SUPPORT ALL CONDUIT AND PLENUM RATED WIRING FROM BEAMS USING BEAM CLAMPS. CONDUIT OR WIRE SUPPORTED FROM CEILING GRID SUPPORTS IS NOT ALLOWED.
- LABEL CONDUITS FOR POWER, LIGHTING, FIRE ALARM AND TELEPHONE/DATA. LABEL ALL JUNCTION BOXES WITH CIRCUIT DESIGNATIONS.

- USE ANTI-SHORTING BUSHINGS WITH MC CABLE.

- USE SET SCREW FITTINGS WITH EMT.

SECTION 26 0519 – LOW VOLTAGE ELECTRICAL POWER CONDUCTORS AND CABLES

- ALL WIRING SHALL BE #12 UNLESS OTHERWISE NOTED. ALL CONDUCTORS SHALL BE COPPER. SIZES #10 AND SMALLER TO BE THWN/THHN, LARGER SIZES THW, THWN/THHN. ALL FINAL CONNECTIONS TO WIRING DEVICES WITH SCREW TERMINALS (SWITCHES, RECEPTACLE, ETC.) SHALL BE MADE WITH SOLID WIRE.

SECTION 26 2726 – WIRING DEVICES

- WIRING DEVICES ARE TO BE LEVITON OR APPROVED EQUAL SPEC GRADE WIRING DEVICES AS FOLLOWS:
  - WALL SWITCHES TO BE QUIET TYPE, BACK-AND-SIDE WIRED, 120-277 VOLTS A.C., 20-AMPERES. SINGLE-POLE: NO. 1221. THREE-POLE: NO. 1223. SWITCHES, WHEN MOUNTED ADJACENT TO ONE ANOTHER, SHALL BE GANGED TOGETHER WITH SINGLE MONOLITHIC COVER PLATE.
  - CONVENIENCE OUTLET RECEPTACLES TO BE BACK-AND-SIDE WIRED, 20-AMPERES, 125 VOLTS, 2-POLE, 2-WIRE, GROUNDING TYPE. DUPLEX: NO. 5362. GROUND FAULT INTERRUPTER DUPLEX: NO. 6598.
  - CONTRACTOR SHALL SUBMIT COLOR SAMPLES FOR APPROVAL BY ARCHITECT FOR ALL DEVICES AND DEVICE COVER PLATES PRIOR TO ORDERING. COVER PLATES TO MATCH EXISTING.
- DIMMERS SHALL BE AS FOLLOWS:
  - WHEN DIMMING AN INCANDESCENT 120V FIXTURE: NT-SERIES DIMMER.
  - WHEN DIMMING A 0-10V FIXTURE: DVSTY SERIES DIMMER
  - WHEN DIMMING AN ELECTRONIC LOW VOLTAGE FIXTURE: DVELY SERIES DIMMER
  - WHEN DIMMING WITH ROOM CONTROLLER: WATTSTOPPER LMDM-101 DIMMER.
- OCCUPANCY SENSORS SHALL BE AS FOLLOWS:
  - WALL MOUNTED: DUAL TECHNOLOGY, ULTRASONIC/INFARED.
  - CEILING MOUNTED: DUAL TECHNOLOGY, ULTRASONIC/INFARED. PROVIDE POWER PACKS AS NECESSARY FOR DEVICE.
  - CONTRACTOR SHALL SUBMIT COLOR SAMPLES FOR APPROVAL BY ARCHITECT FOR DEVICE AND DEVICE COVER PLATES PRIOR TO ORDERING.

SECTION 26 0553 – IDENTIFICATION FOR ELECTRICAL SYSTEMS

- IDENTIFY ALL ELECTRICAL EQUIPMENT AND CONTROLS, NEW AND EXISTING, WITH LAMINATE TAG WITH DOUBLE STICK TAPE.
- PROVIDE TYPEWRITTEN PANEL BOARD DIRECTORY IN BOTH NEW AND EXISTING PANELBOARDS. TYPE THE REVISION DATE ON THE DIRECTORY CARD. INFORMATION SHALL CONSIST OF TENANT NAME/ROOM NUMBER/TYPE OF CIRCUIT, IE. OUTLETS, COPIER, ETC.

SECTION 26 0526 – GROUNDING AND BONDING

- RUN SEPARATE GROUND WIRE IN ALL BRANCH CIRCUITS AND FEEDER CIRCUITS. SIZE GROUND WIRE PER NEC TABLE 250-95. INCREASE CONDUIT SIZE ACCORDINGLY.

SECTION 26 2416 – PANELBOARDS

- BRANCH CIRCUITS ABANDONED DURING DEMOLITION SHALL BE REMOVED FROM THE SPACE TO THE PANELBOARD. PLUG HOLES IN PANEL WITH PLATED STEEL SNAP-IN BLANKS.

SECTION 26 2816 – ENCLOSED SWITCHES AND CIRCUIT BREAKERS

- FUSES:
  - FUSES 600 AMPERES AND BELOW TO BE BUSS, U.L. CLASS RK1, TYPE FRS-R FOR 208-VOLT CIRCUITS. EQUAL BY LITTELFUSE.
- CIRCUIT BREAKER REQUIREMENTS:
  - OPERATING MECHANISM TO BE TRIP FREE OPERATION ON ABNORMAL OVERLOADS OR SHORT CIRCUITS, QUICK-BREAK CONTACT MOVEMENT UNDER MANUAL AND AUTOMATIC OPERATION, TRIPPING ELEMENTS THAT WILL NOT TRIP BREAKER ON HARMLESS MOMENTARY OVERLOADS BUT ENSURE ADEQUATE CIRCUIT PROTECTION. INSTANTANEOUS MAGNETIC TRIP ELEMENTS FOR RAPID INTERRUPTION OF SHORT-CIRCUIT CURRENTS. STATIONARY AND MOVING CONTACTS TO BE NON-WELDING SILVER ALLOY, ADEQUATELY PROTECTED FOR USE OF "DE-ION" ARCH QUENCHER. AUTOMATIC TRIPPING TO BE INDICATED BY HANDLE ASSUMING MIDPOINT POSITION BETWEEN MANUAL, ON AND OFF POSITIONS. TRIP SETTING TO BE INDICATED ON BREAKER HANDLE OR BREAKER CASE. ON MULTI-POLE BREAKERS, THE OVERLOAD ON ANY ONE POLE SHALL OPEN ALL POLES SIMULTANEOUSLY. HANDLE TIES ARE NOT ACCEPTABLE. BREAKER CONNECTIONS TO PANELBOARDS SHALL BE OF THE SAME MANUFACTURER AND SAME VOLTAGE, AIC, RATINGS AND SERIES.

SECTION 28 3111 – FIRE ALARM SYSTEMS

- PROVIDE ALL NEW COMPONENTS AS SPECIFIED HEREIN. COORDINATE FIRE ALARM INSTALLATION WITH ITS FIRE ALARM. FINAL CONNECTIONS, TESTING AND UPDATING OF BUILDING SYSTEM WIRING DIAGRAM TO BE PERFORMED BY ITS FIRE ALARM AND ALL ASSOCIATED COST FOR THIS WORK SHALL BE INCLUDED IN THIS CONTRACT.
- CABLE SHALL BE PLENUM RATED WITH FIREMAN'S RED INSULATION. PROVIDE NEW PLENUM RATED CABLE FOR EXISTING/RELOCATED DEVICES THAT HAVE NON-PLENUM RATED CABLE.
- PROVIDE CONDUIT FOR ALL CABLING SERVING DEVICES IN GYPSUM CEILINGS AND HARD CEILINGS. CABLE IN ACCESSIBLE CEILING MAY BE RUN DIRECTLY IN PLENUM AND SHALL BE SUPPORTED INDEPENDENTLY FROM CEILING SYSTEM SUPPORTS, OR HVAC EQUIPMENT/SUPPORTS.
- STROBE DEVICES SHALL BE MOUNTED TO LOW VOLTAGE MOUNTING BRACKET.
- COMPONENTS INCLUDE THE FOLLOWING:
  - SPEAKER – WHELOCK E60 SERIES (CEILING MOUNTED)
  - STROBE – WHELOCK STWC SERIES
  - SPEAKER/STROBE – WHELOCK E60 SERIES
  - AREA SMOKE DETECTOR – SYSTEM SENSOR 2151 SERIES

- STROBE SYNCH MODULE – WHELOCK DSM SERIES

- ANY EXISTING DEVICE THAT IS RELOCATED, OR TEMPORARILY MOVED SHALL BE TESTED BY ITS FIRE ALARM. ASSOCIATED COST INCLUDED IN THIS CONTRACT.
- FIELD VERIFY THE EXISTING FIRE ALARM STROBE AND SPEAKER WIRING IS OF SUFFICIENT SIZE TO HANDLE THE NEW STROBES AND SPEAKERS TO BE INSTALLED.
- PROVIDE AS-BUILT DRAWINGS.
- ALL SHOP DRAWINGS WITH CALCULATIONS SHALL BE SUBMITTED TO THE STATE FIRE MARSHALL OFFICE AND PAID FOR UNDER THIS CONTRACT. PROVIDE "CERTIFICATE OF COMPLETION" TO BUILDING MANAGEMENT. AFTER THE INSTALLATION HAS BEEN COMPLETED AND TESTED. FIRE ALARM SYSTEM SHALL BE COMPLETED AND TESTED BY THE FINAL PROJECT OBSERVATION.

SECTION 27 0000 – TELEPHONE/DATA SYSTEM

- TELEPHONE/DATA SWITCHING EQUIPMENT SHALL BE LOCATED IN THE TENANT SPACE ONLY. UNLESS NOTED OTHERWISE ON THE PLANS THE TELEPHONE SWITCHING EQUIPMENT IS NOT A PART OF THIS CONTRACT.
- TELEPHONE/DATA OUTLETS INDICATED ARE TO BE FLUSH MOUNTED 4"x4" OUTLET BOXES WITH 1-GANG P.R. FURNISH 3/4 IN. CONDUIT AND PULL STRING FROM OUTLET BOX TO ABOVE CEILING FOR WIRE INSTALLATION BY OTHERS.
- TELEPHONE/DATA WIRE SHALL BE PLENUM RATED. TENANT TO SUBMIT CERTIFICATION OF PLENUM RATING OF CABLE USED. UNLESS NOTED OTHERWISE TELEPHONE WIRING IS NOT A PART OF THIS CONTRACT.

END OF SPECIFICATIONS

ABBREVIATIONS

1. AC	ABOVE COUNTER	48. FACP	FIRE ALARM CONTROL PANEL
2. ACCU	AIR COOLED CHILLER UNIT	49. FARA	FIRE ALARM REMOTE ANNUNCIATOR
3. ACR	ACRYLIC	50. FIN	FINISH
4. AFF	ABOVE FINISHED FLOOR	51. FL	FLUORESCENT
5. AHU	AIR HANDLING UNIT	52. FLR	FLOOR
6. AL	ALUMINUM	53. FS	FUSIBLE SWITCH
7. ASYMM	ASYMMETRICAL	54. GA	GAUGE
8. AV	AUDIO/VISUAL	55. GSXT	GASKET OR GASKETED
9. BCU	BLOWER COIL UNIT	56. GFI	GROUND FAULT INTERRUPTER
10. BLK	BLACK	57. GND, G	GROUND
11. BAS	BUILDING AUTOMATION SYSTEM	58. GUH	GAS UNIT HEATER
12. C	CONDUIT	59. HWP	HEATING HOT WATER PUMP
13. CFL	COMPACT FLOURESCENT	60. HID	HIGH INTENSITY DISCHARGE
14. CHWP	CHILLER WATER PUMP	61. HOUSG	HOUSING
15. CL	CENTERLINE	62. IWP	ICE WATER BUILDER PUMP
16. CLG	CEILING	63. LCP	LIGHTING CONTROL PANEL
17. CLR	CLEAR	64. LIN	LINEAR
18. CMH	CERAMIC METAL HALIDE	65. MAU	MAKE-UP AIR UNIT
19. COMM	COMMUNICATIONS	66. MH	METAL HALIDE
20. CONT	CONTINUOUS	67. MNT	MOUNT
21. CP	CIRCULATION PUMP	68. MSB	MAIN SWITCHBOARD
22. CP	CONTROL PANEL	69. MTL	METAL
23. CRI	COLOR RENDERING INDEX	70. NL	NIGHT LIGHT
24. CRS	COLD ROLLED STEEL	71. PENDT	PENDANT
25. CS	CROSS SECTION	72. PERF	PERFORATED
26. CT	COOLING TOWER	73. POLYCB	POLYCARBONATE
27. CTR	CENTER	74. PWDR	POWDER
28. CTS	CURRENT TRANSFORMERS	75. REFL	REFLECTOR
29. CU	CONDENSING UNIT	76. REQ'D	REQUIRED
30. CWP	CONDENSER WATER PUMP	77. RGS	RIGID GALVANIZED STEEL
31. DCO	DUPLEX CONVENIENCE OUTLET	78. SCO	SINGLE CONVENIENCE OUTLET
32. D	DEDICATED	79. SM	SURFACE MOUNT
33. D/I	DIRECT/INDIRECT	80. SF	SUPPLY FAN
34. DBL	DOUBLE	81. SPEC	SPECIFICATION OR SPECULAR
35. DFA	DOWN FROM ABOVE	82. SS	STAINLESS STEEL
36. DIFF	DIFFUSER	83. STL	STEEL
37. DMFPR	DAMP	84. TFMR	TRANSFORMER
38. DN	DOWN	85. TR	TAMPER RESISTANT
39. EDH	ELECTRIC DUCT HEATER	86. TYP	TYPICAL
40. EF	EXHAUST FAN	87. UON	UNLESS OTHERWISE NOTED
41. EL	ELEVATION ABOVE FINISHED FLOOR	88. VERT	VERTICAL
42. EM	EMERGENCY OPERATION	89. VTS	VOLTAGE TRANSFORMERS
43. EQ	EQUAL	90. WAP	WIRELESS ACCESS POINT
44. EQUIV	EQUIVALENT	91. WH	WATER HEATER
45. EX	EXISTING	92. WHT	WHITE
46. EXTRD	EXTRUDED	93. WP	WEATHER PROOF
47. FAC	FIRE ALARM CABINET		

GENERAL NOTES:

- DEMOLITION: PRIOR TO STARTING DEMOLITION CONFER WITH THE BUILDING ENGINEER FOR GENERAL INSTRUCTIONS.
  - REMOVE ALL EXISTING DEVICES NOTED ON THE PLAN TO BE REMOVED. REMOVE ALL EXISTING DEVICES IN WALLS TO BE DEMOLISHED. REMOVE ALL FLOOR BOXES NOT SCHEDULED TO BE REUSED. REMOVE ALL ASSOCIATED CONDUIT AND WIRING. PROVIDE ADDITIONAL CONDUIT AND WIRING NECESSARY TO MAINTAIN CIRCUIT CONTINUITY TO EXISTING DEVICES, FIXTURES, ETC. ON THE SAME CIRCUIT THAT ARE TO REMAIN.
  - REMOVE ALL EXISTING CONDUIT, WIRING, AND JUNCTION BOXES LOCATED IN AREAS THAT WILL HAVE NEW GYPSUM AND HARD CEILINGS INSTALLED.
  - PROVIDE NEW CIRCUITRY TO EXISTING FIXTURES IN SPACE NOT INCLUSIVE OF THE TENANT SPACE RENOVATION BUT IS PRESENTLY SERVICED FROM THE AREA TO BE RENOVATED.
  - TURN ALL FIXTURES TO BE REMOVED AND NOT REUSED OVER TO THE OWNER IN GOOD CONDITION AND WORKING ORDER.
  - REMOVE TELEPHONE CABLES NOTED TO BE DEMOLISHED BACK TO THE TENANT MAIN NET/PHONE CLOSET BACKBOARD. TENANT TELEPHONE CABLES TO BE CUT AT SLAB LEVEL IF IT RISES TO THE FLOOR ABOVE OR BELOW. CONTACT BUILDING MANAGEMENT PRIOR TO CUTTING CABLES.
  - REMOVE DATA CABLES NOTED TO BE DEMOLISHED BACK TO THE TENANT MAIN NET/PHONE BACKBOARD. TENANT DATA CABLES TO BE CUT AT SLAB LEVEL IF IT RISES TO THE FLOOR ABOVE OR BELOW. CONTACT BUILDING MANAGEMENT PRIOR TO CUTTING CABLES.
  - REMOVE ALL FIRE ALARM DEVICES AND WIRING NOTED TO BE REMOVED AND/OR NOT SHOWN TO REMAIN OR BE RELOCATED. REMOVE ALL ASSOCIATED CONDUIT AND WIRING. PROVIDE ADDITIONAL CONDUIT AND WIRING NECESSARY TO MAINTAIN CIRCUIT CONTINUITY TO EXISTING DEVICES.
  - REMOVE ALL ABANDONED ELECTRICAL EMT AND CONDUIT.
  - REMOVE ALL OLD HANGERS.
  - REMOVE EXISTING FURNITURE SYSTEM POWER. REMOVE ALL ASSOCIATED CONDUIT AND WIRING. PROVIDE ADDITIONAL CONDUIT AND WIRING NECESSARY TO MAINTAIN CIRCUIT CONTINUITY TO EXISTING ELECTRICAL ON THE SAME CIRCUIT THAT IS TO REMAIN.

- WHERE EXISTING OUTLETS ARE SHOWN TO REMAIN, BUT ARE INDICATED WITH NEW CIRCUITRY PERFORM THE FOLLOWING:
  - REMOVE EXISTING CIRCUITRY IN ITS ENTIRETY BACK TO SOURCE. PROVIDE ADDITIONAL CONDUIT AND WIRING NECESSARY TO MAINTAIN CIRCUIT CONTINUITY TO EXISTING DEVICES ON THE SAME CIRCUIT THAT ARE NOT TO BE RE-CIRCUITED.
  - PROVIDE NEW RECEPTACLE.
  - RE-CIRCUIT DEVICES AS SHOWN.
- CONTRACTOR IS TO DETERMINE ALL EXISTING AND NEW DEVICE AND CIRCUIT DESIGNATIONS AND REFLECT THESE DESIGNATIONS ON THE AS-BUILTS.
- INVESTIGATE AND REMOVE ALL BRANCH CIRCUITS FEEDING INTO TENANT SPACE THAT ARE NOT BEING USED. REMOVE THESE CIRCUITS IN THEIR ENTIRETY TO THE ORIGINAL POWER GRID OR TO THE PANEL. CONNECT NEW CIRCUITS TO THESE "SPARE" CIRCUIT BREAKERS IN THE PANEL.
- PRIOR TO STARTING CONSTRUCTION CONTRACTOR SHALL ASCERTAIN THAT THERE ARE ENOUGH 208/120V CIRCUITS AVAILABLE TO HANDLE THE NEW 120V LOADS, IF THERE ARE NOT ENOUGH CIRCUITS AVAILABLE, CONTRACTOR SHALL NOTIFY ARCHITECT AND ENGINEER BEFORE ANY WIRING IS STARTED.
- REMOVE ALL EXISTING ELECTRICAL FIXTURES, DEVICES, PANELS, BOXES, CONDUIT, WIRING AND OTHER ELECTRICAL APPARATUS FROM ALL SECTIONS OF EXISTING WALLS AND PARTITIONS BEING REMOVED.
- WHERE EXISTING TO REMAIN DEVICES ARE SHOWN THE EXISTING DEVICES AND FACEPLATES SHALL BE REPLACED. ROUGH-INS MAY BE REUSED.
- WHERE REMOVAL OF EXISTING ELECTRICAL APPARATUS INTERRUPTS A CIRCUIT SERVING EXISTING DOWNSTREAM FIXTURES OR DEVICES TO REMAIN, MAINTAIN CIRCUIT CONTINUITY AS REQUIRED. PROVIDE NEW JB'S, PB'S, CONDUIT, WIRING AND OTHER APPURTENANCES AS NECESSARY.
- WHERE AN EXISTING FIXTURE OR DEVICE IS REMOVED BUT THE CONDUIT AND BOX REMAIN FOR CIRCUIT CONTINUITY, PROVIDE AN APPROPRIATE BLANK COVER PLATE BOX OF MATERIAL AND FINISH TO MATCH THE COVER PLATES ON THE DEVICES IN THAT ROOM.
- UNLESS OTHERWISE NOTED ON THE PLANS, IN ROOMS WHERE NEW OUTLETS ARE BEING ADDED AND THE EXISTING OUTLETS TO REMAIN ARE 12" AFF. THE NEW OUTLETS SHALL BE MOUNTED 12" AFF. ALSO, IN ROOMS WHERE ALL OUTLETS IN THE ROOM ARE NEW, THE NEW OUTLETS SHALL BE MOUNTED 18" AFF.
- FURNISH AND INSTALL GROUND BAR KIT IN EXISTING PANELBOARDS THAT DO NOT HAVE A GROUND BAR.
- CONTRACTOR SHALL SEPARATE ALL EXISTING BRANCH CIRCUITS SERVING THE AREA OF CONSTRUCTION FROM OTHER TENANT SPACES.
- CONTRACTOR SHALL COORDINATE WITH ARCHITECTURAL DRAWINGS FOR ADDITIONAL INFORMATION. NO ADDITIONAL COST WILL BE ALLOWED FOR PRICING BASED ON ENGINEERING DRAWINGS ALONE.
- PROVIDE UPDATED TYPEWRITTEN PANEL DIRECTORIES.
- CONTRACTOR SHALL REVISE OR ADD ADDITIONAL SUPPORTS TO ANY EXISTING CABLING OR EXISTING CONDUIT IN SCOPE OF WORK THAT IS CURRENTLY NOT SUPPORTED PROPERLY.
- ALL MC CABLE FOR BRANCH WIRING TO MODULAR FURNITURE SHALL CONTAIN AN INCREASED (#8) NEUTRAL.

REFERENCE NOTES – ELECTRICAL

- CONNECT TO NEAREST AVAILABLE 277V NORMAL LIGHTING CIRCUIT. LOAD SHALL NOT EXCEED 3500VA ON CIRCUIT.
- CONNECT TO NEAREST AVAILABLE 277V EMERGENCY LIGHTING CIRCUIT. LOAD SHALL NOT EXCEED 3500VA ON CIRCUIT.
- RUN EACH HOME RUN INDICATED TO A 20A, 1P, 120 VOLT CIRCUIT BREAKER IN 120V PANEL SERVING FLOOR. PROVIDE CIRCUIT BREAKER IN PANELBOARD IF REQUIRED.
- EXISTING CIRCUIT HOMERUN TO REMAIN. SEE GENERAL NOTE #3 ON POWER SHEET
- PROVIDE RED COLORED LIGHT SWITCH WITH LIGHTED HANDLE WHEN SWITCH IS OFF.
- COORDINATE AND CONNECT VIA BUILDING LIGHTING CONTROL PANEL ADJACENT TO SCHEDULED LIGHTING PANEL. ADD NECESSARY RELAYS AND PROGRAMMING. ALL LIGHTING CONTROL PROGRAMMING SHALL BE DONE BY COMPUTROLS PER BUILDING ENGINEER'S INSTRUCTIONS.
- PROVIDE 40A/1P CIRCUIT BREAKER IN EXISTING 277/480V PANEL AND ROUTE 2 #8'S AND 1 #10 GROUND, 3/4"C TO NEW CIRCUIT BREAKER AND CONNECT THERETO.
- PROVIDE 20A/1P CIRCUIT BREAKER IN EXISTING 277/480V PANEL AND ROUTE 2 #12'S AND 1 #12 GROUND, 1/2"C TO NEW CIRCUIT BREAKER AND CONNECT THERETO.
- CONNECT TO EXISTING ADEQUATE 480V, 3 PHASE CIRCUIT SERVING VAV'S IN AREA.



Architects

320 N. Carrollton Avenue, Suite 100  
New Orleans, Louisiana 70119  
t. 504.488.7739 f. 504.488.7743

www.VergesRome.com

© copyright 2021



NEW ORLEANS, LOUISIANA

PAN AMERICAN LIFE CENTER  
SUITE 1850

601 POYDRAS STREET

DATE ISSUED: 20 MAY 2022

REVISED: 18 AUGUST 2022

REVISED: 19 AUGUST 2022

REVISED:

REVISED:

DRAWN BY: DB

CHECKED BY: JC

PHASE:

CONSTRUCTION  
DOCUMENTS

21004-N

TITLE:

ELECTRICAL  
SPECIFICATIONS

SHEET:

E1.00



HUSEMAN  
& Associates

MECHANICAL ELECTRICAL PLUMBING FIRE PROTECTION

3501 N CAUSEWAY BLVD, (504) 456-3119

SUITE 710, METAIRIE, LA 70002

Job No. 2202301

Designed By DB

Drawn By DB

Checked By JC



LIGHTING SYMBOLS		
CEILING	WALL	DESCRIPTION
		EXISTING FLUORESCENT, LED, OR HID LIGHT FIXTURE. LETTER DENOTES FIXTURE TYPE. SEE FIXTURE SCHEDULE.
		RELOCATED EXISTING FLUORESCENT, LED, OR HID LIGHT FIXTURE. LETTER DENOTES FIXTURE TYPE. SEE FIXTURE SCHEDULE.
		NEW FLUORESCENT, LED, OR HID LIGHT FIXTURE. LETTER DENOTES FIXTURE TYPE. SEE FIXTURE SCHEDULE.
		FLUORESCENT, LED, OR HID LIGHT FIXTURE. LETTER DENOTES FIXTURE TYPE. SEE FIXTURE SCHEDULE.
		FLUORESCENT STRIP FIXTURE. LETTER DENOTES FIXTURE TYPE. SEE FIXTURE SCHEDULE.
		INCANDESCENT, LED, FLUORESCENT, OR HID LIGHT FIXTURE. LETTER DENOTES FIXTURE TYPE. SEE FIXTURE SCHEDULE.
		"EXIT" LIGHT FIXTURE. ARROWS ON FACE INDICATE DIRECTION. SEE FIXTURE SCHEDULE.
		INCANDESCENT, FLUORESCENT, OR LED EMERGENCY LIGHT FIXTURE. LETTER DENOTES FIXTURE TYPE. SEE FIXTURE SCHEDULE.
		FIXTURE ON EMERGENCY CIRCUIT. LETTER DENOTES FIXTURE TYPE. SEE FIXTURE SCHEDULE.
		FLUORESCENT, LED, OR HID POLE MOUNTED LIGHT FIXTURE. LETTER DENOTES FIXTURE TYPE. SEE FIXTURE SCHEDULE.
		WALL MOUNTED SCONCE. LETTER DENOTES FIXTURE TYPE. SEE FIXTURE SCHEDULE.
		POWER SUPPLY LED DRIVER. COORDINATE WITH LED LIGHT FIXTURE MANUFACTURER FOR SELECTION. SEE FIXTURE SCHEDULE.
		POWER PACK FOR OCCUPANCY SENSOR. SP DENOTES SLAVE PACK. SEE SENSOR SCHEDULE.
		ROOM CONTROLLER FOR LIGHTING CONTROL.
		OCCUPANCY SENSOR. SEE SENSOR SCHEDULE.
		PHOTOCELL.
WIRING SYMBOLS		
		DESCRIPTION
		HOMERUN TO PANELBOARD WITH NOMENCLATURE (LETTERS). CIRCUIT NUMBERS (NUMBERS). NUMBER OF CIRCUITS (NUMBER OF ARROWS). EACH CIRCUIT TO HAVE GROUND.
		WIRING (IN CONDUIT) CONCEALED IN CEILING OR WALL.
		WIRING (IN CONDUIT) RUN EXPOSED.
		EXISTING WIRING
		FLEXIBLE CORD WIRE TO EQUIPMENT
		GROUND CONNECTON. GROUND PER NEC ARTICLE 250.
		SWITCH
		MOTOR RATED TOGGLE SWITCH, 20A/1P (M) OR 30A/2P (M2)
		THREE WAY SWITCH
		FOUR WAY SWITCH
		SINGLE POLE DIMMER SWITCH AT 48" A.F.F. (NON SCR, AUTO TRANSFORMER TYPE).
		OCCUPANCY SENSOR, WALL MOUNTED, SEE SENSOR SCHEDULE
		KEY SWITCH, COORDINATE KEY SCHEDULE WITH ARCHITECT
		LOW VOLTAGE SWITCH. REFER TO PLANS FOR ADDITIONAL NOTES AND/OR REQUIREMENTS.
		DIMMER SWITCH
		CONDUIT TURNED UP
		CONDUIT TURNED DOWN
		CONDUIT STUBBED OUT
		PULL BOX

POWER SYMBOLS		
FLOOR	WALL	CEIL.

SYSTEM DEVICES		
FLOOR	WALL	CEIL.

ONE-LINE SYMBOLS	
	DESCRIPTION
	METER ENCLOSURE
	CIRCUIT BREAKER
	FUSE
	FUSE
	FUSED SWITCH
	BAS
	PANELBOARD
	METER/MONITOR: 0/C=CIRCUIT BREAKER POSITION STATUS, M2=SQUARE D PM820 OR EQUIV, M3=SQUARE D PM710 OR EQUIV
	GROUND FAULT CURRENT INTERRUPTER
	TRANSFORMER
REFERENCE SYMBOLS	
	DESCRIPTION
	REFERENCE NOTE.
	SPECIFIC NOTE REFERENCE.
	CALL OUT REFERENCE.
	FEEDER REFERENCE.
	REVISION REFERENCE.

FIRE ALARM SYSTEM DEVICES	
	DESCRIPTION
	FIRE ALARM, COMBINATION SPEAKER/STROBE WALL MOUNTED AT 80" AFF, CANDELA AS INDICATED
	FIRE ALARM SPEAKER, WALL MOUNTED
	FIRE ALARM, COMBINATION SPEAKER/STROBE CEILING MOUNTED, CANDELA AS INDICATED
	FIRE ALARM SPEAKER, CEILING MOUNTED
	STROBE, CEILING MOUNTED, CANDELA AS INDICATED
	STROBE, WALL MOUNTED AT 80" AFF. (CANDELA AS INDICATED).
	FIRE ALARM PULL STATION, PROVIDE PROTECTIVE COVERS. MATCH EXISTING BUILDING TYPE. K= LOCKING TYPE
	HEAT DETECTOR
	SMOKE DETECTOR-CEILING MOUNTED, WALL MOUNTED
	DUCT SMOKE DETECTOR WITH SAMPLING TUBE MOUNTED IN DUCT WORK
	SMOKE DETECTOR WITH SOUNDER BASE. WALL BRACKET INDICATES DEVICE SHALL BE WALL MOUNTED
	FLOW SWITCH
	TAMPER SWITCH
	COMMAND MODULE
	MONITORING MODULE
	PRESSURE SWITCH
	LEVEL SWITCH
	FIRE/SMOKE DAMPER. PROVIDE 120V POWER AND SIGNAL TO FACP.
	2-WAY AREA OF REFUGE PHONE/INTERCOM

SYMBOL NOTES:

- ANY SYMBOL WITH AN "E" IS EXISTING TO REMAIN. MAINTAIN EXISTING CIRCUIT CONTINUITY AND REPLACE EXISTING DEVICE WITH NEW AS REQUIRED.
- ANY DASHED SYMBOL OR SYMBOL WITH AN "X" IS EXISTING TO BE REMOVED.
- ANY SYMBOL WITH AN "R" INDICATES TO BE RELOCATED.
- SYMBOL MODIFIERS:  
"AC" INDICATES DEVICE TO BE MOUNTED 4 IN. ABOVE COUNTER.  
"GFI" INDICATES DEVICE TO BE GROUND FAULT INTERRUPTER.  
"IG" INDICATES DEVICE TO BE ISOLATED GROUND TYPE.  
"EM/NL" INDICATES FIXTURE TO BE WIRED FOR EMERGENCY AND NIGHT LIGHT OPERATION.  
"EM" INDICATES FIXTURE TO BE WIRED FOR EMERGENCY OPERATION. SWITCHED.  
"SM" INDICATES DEVICE TO BE SURFACE MOUNTED.  
"FLC" INDICATES RECEPTACLE MOUNTED FLUSH WITH CEILING

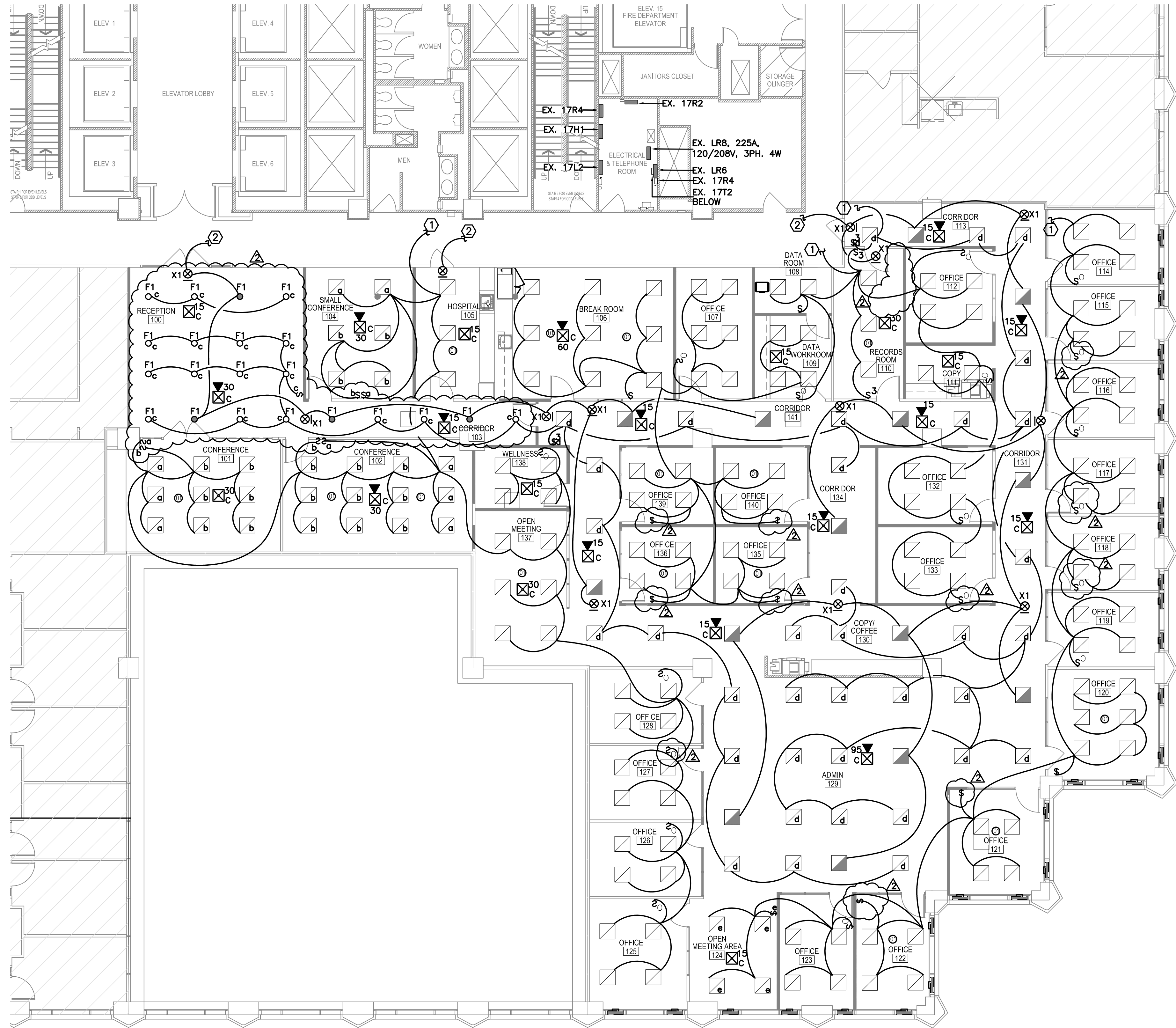
FIXTURE SCHEDULE

TAG	NOTES	DESCRIPTION	CATALOG	LAMP
F1		4" ROUND DOWNLIGHT, MEDIUM BEAM, SPECULAR REFLECTOR FINISH, 277V	PRESCOLITE LTR SERIES	1100 LM 3500°K 80+CRI
F2		4" LINEAR RECESSED FIXTURE, FLUSH SATIN LENS, 37SLM/FT WOOD SLAT CEILING, 4' LENGTH, 277V	FOCAL POINT SEEM 4 LED	600 LM 3500°K 80+CRI
F3		2'X4' BUILDING STANDARD, 4-LAMP PARABOLIC, 4" DEEP CELL, RELAMP ALL EXISTING TO BE REUSED AND/OR RELOCATED. 277V	LITHONIA 2PM4	F328LED RETROFIT 3500°K 85+CRI
F4		2'X2' BUILDING STANDARD, 4-LAMP PARABOLIC, 4" DEEP CELL, RELAMP ALL EXISTING TO BE REUSED AND/OR RELOCATED. 277V	LITHONIA 2PM4	F1778LED RETROFIT 3500°K 85+CRI
EXIT SIGN		BUILDING STANDARD EXIT FIXTURE, WHITE POLYCARBONATE, RED LETTERS	QUANTUM THERMOPLASTC LQM SERIES	RED LED, INCLUDED WITH FIXTURE

OCCUPANCY SENSOR SCHEDULE

TAG	DESCRIPTION	COVERAGE	CATALOG	EQUAL
S <sup>01</sup>	WALL SWITCH SENSOR, DUAL TECHNOLOGY PIR AND ULTRASONIC (OR MICROPHONIC), AUTO ADJUST TIME DELAY BASED ON USAGE PATTERNS, 277VAC	PIR WALKING MOTION - 35' X 30' PIR HAND MOTION - 20' X 15' UT WALKING MOTION - 20' X 20' UT HAND MOTION - 15' X 15'	WATTSTOPPER DW-100	SENSOR SWITCH WSD-PDT-SA
S <sup>01</sup>	CEILING MOUNTED, DUAL TECHNOLOGY PIR AND ULTRASONIC (OR MICROPHONIC), 1000 SQFT 360° COVERAGE, AUTO ADJUST TIME DELAY BASED ON USAGE PATTERNS, 24VDC	PIR WALKING MOTION - 44' DIAMETER PIR HAND MOTION - 25' DIAMETER UT WALKING MOTION - 40' X 40' UT HAND MOTION - 31' X 31'	WATTSTOPPER DT-300	SENSOR SWITCH CM-PDT-10





LIGHTING NOTES:

1. ALL 2X2 FIXTURES SHOWN ARE TYPE F4. ALL 2X4'S ARE F3. REFER TO E1.01.
2. ALL F4'S ARE TO BE RELAMPED WITH BUILDING STANDARD LEDs AND F3'S ARE TO BE RELAMPED WITH BUILDING STANDARD LEDs.
3. CUT AND PATCH WHERE NECESSARY FOR INSTALLATION OF NEW DEVICES

VergesRome

Architects

320 N. Carrollton Avenue, Suite 100  
New Orleans, Louisiana 70119  
t. 504.488.7739 f. 504.488.7743

www.VergesRome.com

© copyright 2021



PAN AMERICAN LIFE CENTER  
SUITE 1850

NEW ORLEANS, LOUISIANA

601 POYDRAS STREET

DATE ISSUED:	20 MAY 2022
REVISED:	18 AUGUST 2022
REVISED:	19 AUGUST 2022
REVISED:	
REVISED:	
DRAWN BY:	DB
CHECKED BY:	JC
PHASE:	

CONSTRUCTION  
DOCUMENTS

21004-N

TITLE:  
FLOOR PLAN - LIGHTING  
AND FIRE ALARM

SHEET:

E2.00

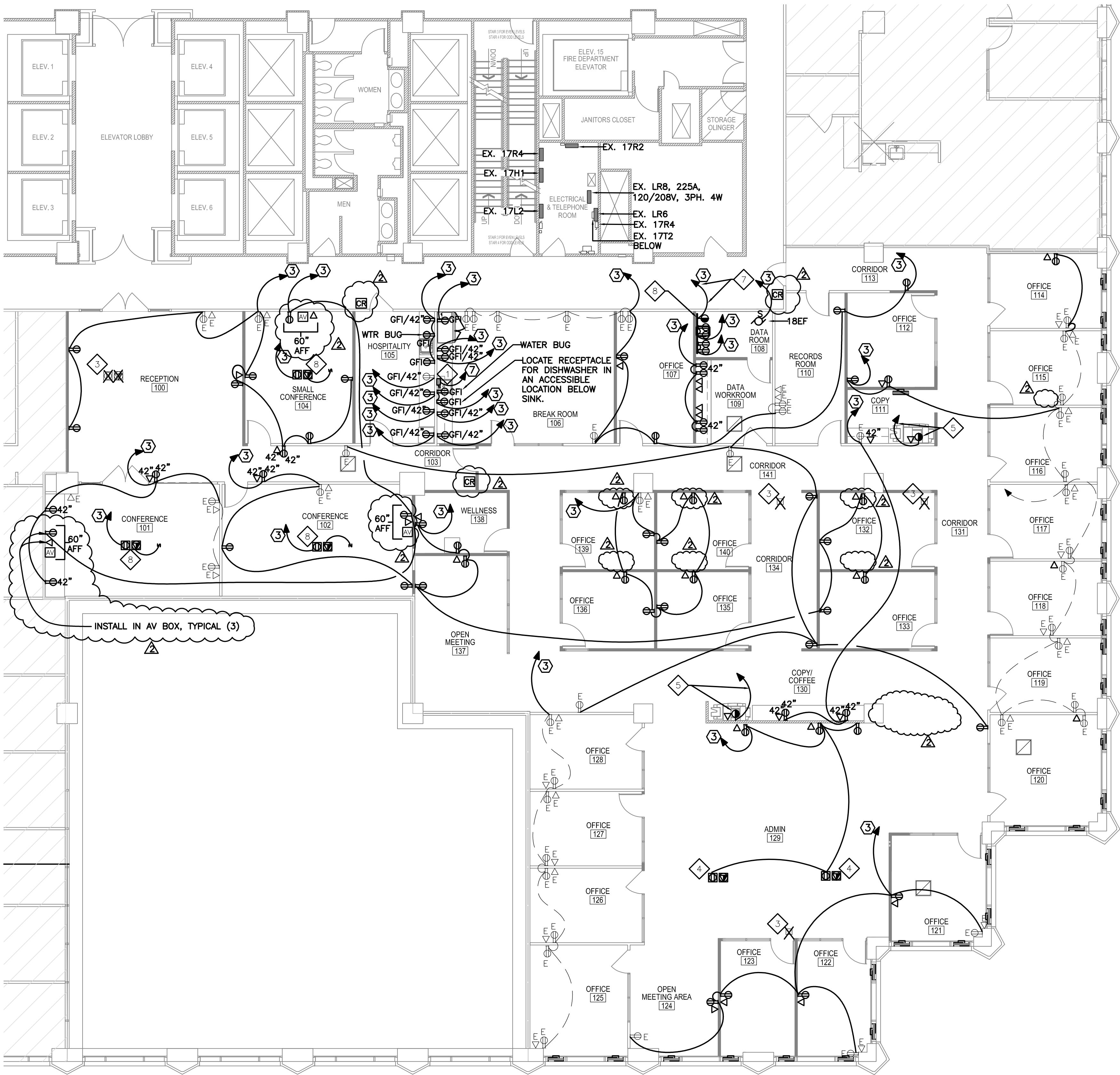
HUSEMAN  
& Associates

MECHANICAL ELECTRICAL PLUMBING FIRE PROTECTION  
3501 N CAUSEWAY BLVD, (504) 456-3119  
SUITE 710, METAIRIE, LA 70002

Job No. 2202301  
Drawn By DB  
Designed By DB  
Checked By JC

1 NEW 18TH FLOOR PLAN - LIGHTING & FIRE ALARM  
E2.00 1/8" = 1'-0"





**SPECIFIC NOTES:**

- 1 WATER HEATER – 8.3 KW, 277V. PROVIDE 40A/2P SWITCH FOR SIGHT DISCONNECTING MEANS AND CONNECT TO WATER HEATER WITH 2 #8'S AND 1 #10 GROUND, 3/4" FLEXIBLE LIQUIDTIGHT CONDUIT.
- 2 3 #10'S, 1 #8N, 1 #8G, 1 3/4" C AND 1 #10, 1#10N, 1#10G IN 1"C.
- 3 APPROXIMATE LOCATION OF EXISTING FLOOR BOX/POWER POLE TO BE REMOVED. REMOVE FLOOR BOX, ASSOCIATED WIRING AND CONDUIT, AND PATCH PENETRATIONS AND FLOOR.
- 4 ROVIDE POKE THROUGH (SIMILAR TO WIREMOLD 4AT SERIES) FOR POWER/COMMUNICATIONS ROUGH-IN. STUB-UP 1" CONDUIT WITH PULL STRING FOR AV/COMMUNICATIONS. STUB-UP 3/4" CONDUIT FOR POWER CONNECTIONS. ROUTE IN CEILING BELOW TO NEAREST WALL, TURN UP AND THEN ROUTE CONDUITS TO ABOVE CEILING. COORDINATE EXACT REQUIREMENTS AND LOCATIONS WITH TENANT'S REPRESENTATIVE PRIOR TO PURCHASE AND INSTALL. PROVIDE CIRCUITING AS SHOWN.
- 5 SINGLE RECEPTACLE, 20A, 208V, PROVIDE RECEPTACLE TO MATCH PLUG ON COPIER. PROVIDE 20A/2P CIRCUIT BREAKER IN PANEL AND ROUTE 2 #12'S AND 1 #12 GROUND TO NEW CIRCUIT BREAKER AND CONNECT THERETO.
- 6 COMMUNICATIONS BACKBOARD – 3/4" PLYWOOD, 4'X3' PAINTED WITH 2 COATS OF FIRE-RATED PAINT. COORDINATE EXACT LOCATION OF BACKBOARD WITH TENANT.
- 7 SINGLE RECEPTACLE, 30A/1P – 2 #10'S AND 1 #10 GROUND, 3/4" C. PROVIDE 30A/1P CIRCUIT BREAKER IN EXISTING PANEL AND CONNECT CIRCUIT THERETO. COORDINATE NEMA CONFIGURATION WITH TENANT'S COMMUNICATIONS EQUIPMENT AND ADJUST ACCORDINGLY.
- 8 PROVIDE POKE THROUGH (SIMILAR TO WIREMOLD 6AT SERIES) FOR AV/POWER/COMMUNICATIONS ROUGH-IN. STUB-UP 1 1/2" CONDUIT WITH PULL STRING FOR AV/COMMUNICATIONS. STUB-UP 3/4" CONDUIT FOR POWER CONNECTIONS. ROUTE IN CEILING BELOW TO NEAREST WALL, TURN UP AND THEN ROUTE CONDUITS TO ABOVE CEILING. COORDINATE EXACT REQUIREMENTS AND LOCATIONS WITH TENANT'S REPRESENTATIVE PRIOR TO PURCHASE AND INSTALL. PROVIDE CIRCUITING AS SHOWN.
- 9 WATER HEATER – 4.2 KW, 277V. PROVIDE 20A/2P SWITCH FOR SIGHT DISCONNECTING MEANS AND CONNECT TO WATER HEATER WITH 2 #12'S AND 1 #12 GROUND, 1/2" FLEXIBLE LIQUIDTIGHT CONDUIT.

**SUPPLEMENTAL SYMBOL SCHEDULE:**

- AV AV/TV WITH HDMI ROUGH-IN, PROVIDE JUNCTION BOX AND 1 1/4" C TO ABOVE CEILING AND BUSH. COORDINATE WITH ARCHITECT/OWNER'S AV REPRESENTATIVE FOR EXACT REQUIREMENTS AND CONDUIT ROUTING.

**POWER AND COMMUNICATIONS GENERAL NOTES:**

- 1. ALL EXISTING RECEPTACLES AND DATA OUTLETS ARE NOT SHOWN ON DRAWINGS. ANY DEVICES NOT SHOWN TO BE REMOVED IN THE RENOVATED SPACE SHALL BE REMOVED AND BLANK PLATE PROVIDED. SEE DEMOLITION NOTES.
- 2. CUT AND PATCH WALLS AS REQUIRED TO INSTALL NEW DEVICES.
- 3. EXISTING WIRING IS SHOWN PER AS-BUILT DRAWINGS. CONTRACTOR SHALL FIELD VERIFY AND REWORK/PROVIDE NEW AS REQUIRED TO PROVIDE CIRCUITING AS SHOWN.

1 NEW 18TH FLOOR PLAN - POWER AND COMMUNICATIONS  
E3.00 1/8" = 1'-0"

VergesRome

Architects

320 N. Carrollton Avenue, Suite 100  
New Orleans, Louisiana 70119  
t. 504.488.7739 f. 504.488.7743

www.VergesRome.com

© copyright 2021



PAN AMERICAN LIFE CENTER  
SUITE 1850

NEW ORLEANS, LOUISIANA

601 POYDRAS STREET

DATE ISSUED:	20 MAY 2022
REVISED:	18 AUGUST 2022
REVISED:	19 AUGUST 2022
REVISED:	
REVISED:	
DRAWN BY:	DB
CHECKED BY:	JC
PHASE:	

CONSTRUCTION  
DOCUMENTS

21004-N

TITLE:  
FLOOR PLAN - POWER  
AND COMMUNICATIONS

SHEET:

E3.00



HUSEMAN  
& Associates

MECHANICAL ELECTRICAL PLUMBING FIRE PROTECTION  
3501 N CAUSEWAY BLVD, (504) 456-3119  
SUITE 710, METAIRIE, LA 70002

Job No. 2202301 Designed By DB  
Drawn By DB Checked By JC