

In this 3D model, facets appear as semi-transparent to reveal overhangs.

## PREPARED FOR

Contact:	Gabriel Cervantes
Company:	Community Roofing Services, LLC
Address:	1463 Highway 190 E # Us Hammond, LA 70401-9574
Phone:	9853702085

## TABLE OF CONTENTS

Images .....	1
Length Diagram .....	4
Pitch Diagram .....	5
Area Diagram .....	6
Notes Diagram.....	7
Report Summary.....	8

## MEASUREMENTS

Total Roof Area =5,292 sq ft  
 Total Roof Facets =11  
 Predominant Pitch =9/12  
 Number of Stories >1  
 Total Ridges/Hips =214 ft  
 Total Valleys =82 ft  
 Total Rakes =107 ft  
 Total Eaves =273 ft

Measurements provided by [www.eagleview.com](http://www.eagleview.com)



Certified Accurate

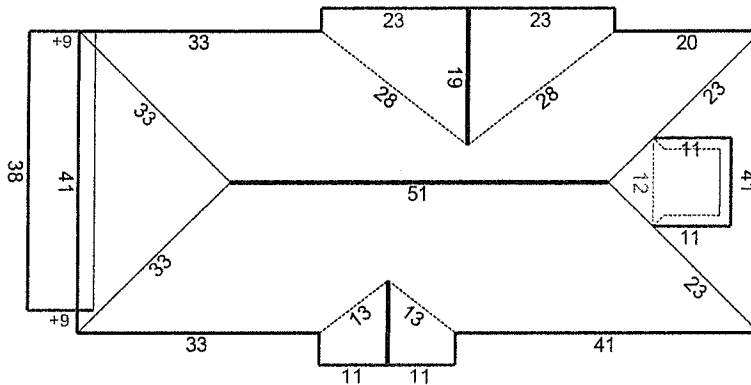
[www.eagleview.com/Guarantee.aspx](http://www.eagleview.com/Guarantee.aspx)

# LENGTH DIAGRAM

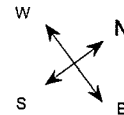
Total Line Lengths:

**Ridges = 82 ft**  
 Hips = 132 ft

 Valleys = 82 ft  
 Rakes = 107 ft  
 Eaves = 273 ft

 Flashing = 47 ft  
 Step flashing = 24 ft  
**Parapets = 0 ft**


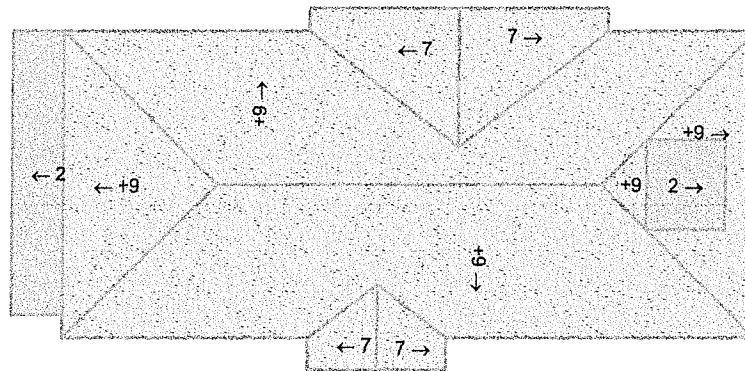
© 2022 Eagle View Technologies, Inc. All Rights Reserved.



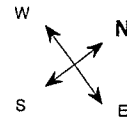
Note: This diagram contains segment lengths (rounded to the nearest whole number) over 5.0 Feet. In some cases, segment labels have been removed for readability. Plus signs preface some numbers to avoid confusion when rotated (e.g. +6 and +9).

# PITCH DIAGRAM

Pitch values are shown in inches per foot, and arrows indicate slope direction. The predominant pitch on this roof is 9/12



© 2022 Eagle View Technologies, Inc., All Rights Reserved.



**Note:** This diagram contains labeled pitches for facet areas larger than 20.0 square feet. In some cases, pitch labels have been removed for readability. Blue shading indicates a pitch of 3/12 and greater. Gray shading indicates flat, 1/12 or 2/12 pitches.

# REPORT SUMMARY

## All Structures

Areas per Pitch			
Roof Pitches	2/12	7/12	9/12
Area (sq ft)	471.9	665.0	4154.1
% of Roof	8.9%	12.6%	78.5%

The table above lists each pitch on this roof and the total area and percent (both rounded) of the roof with that pitch.

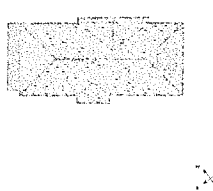
Structure Complexity		
Simple	Normal	Complex

Waste Calculation									
NOTE: This waste calculation table is for asphalt shingle roofing applications. All values in table below only include roof areas of 3/12 pitch or greater. For total measurements of all pitches, please refer to the Lengths, Areas, and Pitches section below.									
Waste %	0%	1%	6%	9%	11%	13%	16%	21%	26%
Area (Sq ft)	<b>4820</b>	4869	5110	5254	<b>5351</b>	5447	5592	5833	6074
Squares *	<b>48.33</b>	49.00	51.33	52.66	<b>53.66</b>	54.66	56.00	58.33	61.00
	<b>Measured</b>				<b>Suggested</b>				

\* Squares are rounded up to the 1/3 of a square

Additional materials needed for ridge, hip, and starter lengths are not included in the above table. The provided suggested waste factor is intended to serve as a guide—actual waste percentages may differ based upon several variables that EagleView does not control. These waste factor variables include, but are not limited to, individual installation techniques, crew experiences, asphalt shingle material subtleties, and potential salvage from the site. Individual results may vary from the suggested waste factor that EagleView has provided. The suggested waste is not to replace or substitute for experience or judgment as to any given replacement or repair work.

## All Structures Totals



### Lengths, Areas and Pitches

Ridges = 82 ft (3 Ridges)  
 Hips = 132 ft (6 Hips).  
 Valleys = 82 ft (4 Valleys)  
 Rakes† = 107 ft (8 Rakes)  
 Eaves/Starter‡ = 273 ft (12 Eaves)  
 Drip Edge (Eaves + Rakes) = 380 ft (20 Lengths)  
 Parapet Walls = 0 (0 Lengths).  
 Flashing = 47 ft (2 Lengths)  
 Step flashing = 24 ft (4 Lengths)  
 Predominant Pitch = 9/12  
**Total Area (All Pitches) = 5,292 sq ft**

### Property Location

Longitude = -90.0792537  
 Latitude = 29.9741493

### Notes

This was ordered as a residential property. There were no changes to the structure in the past four years.

Total Roof Facets = 11

† Rakes are defined as roof edges that are sloped (not level).  
 ‡ Eaves are defined as roof edges that are not sloped and level.