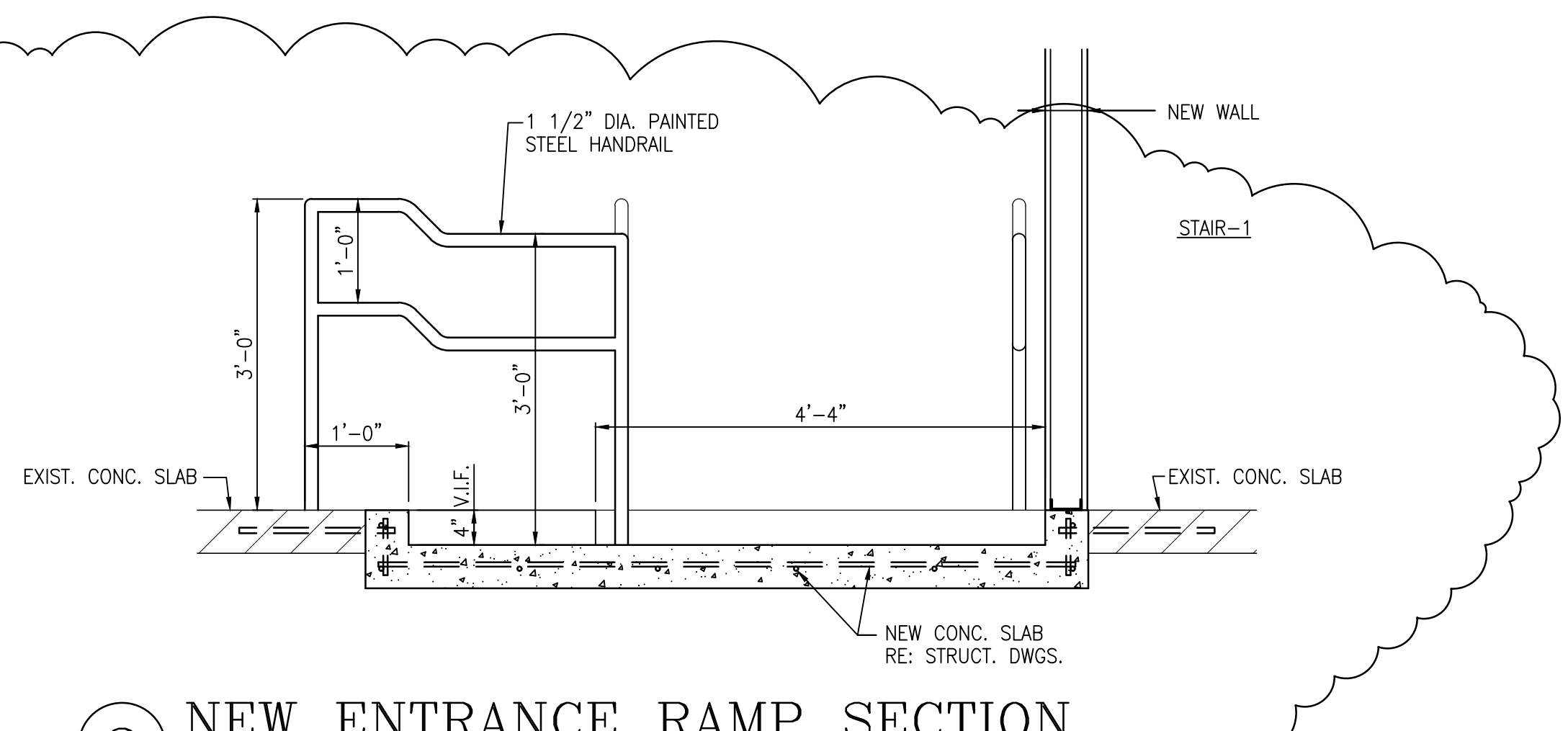
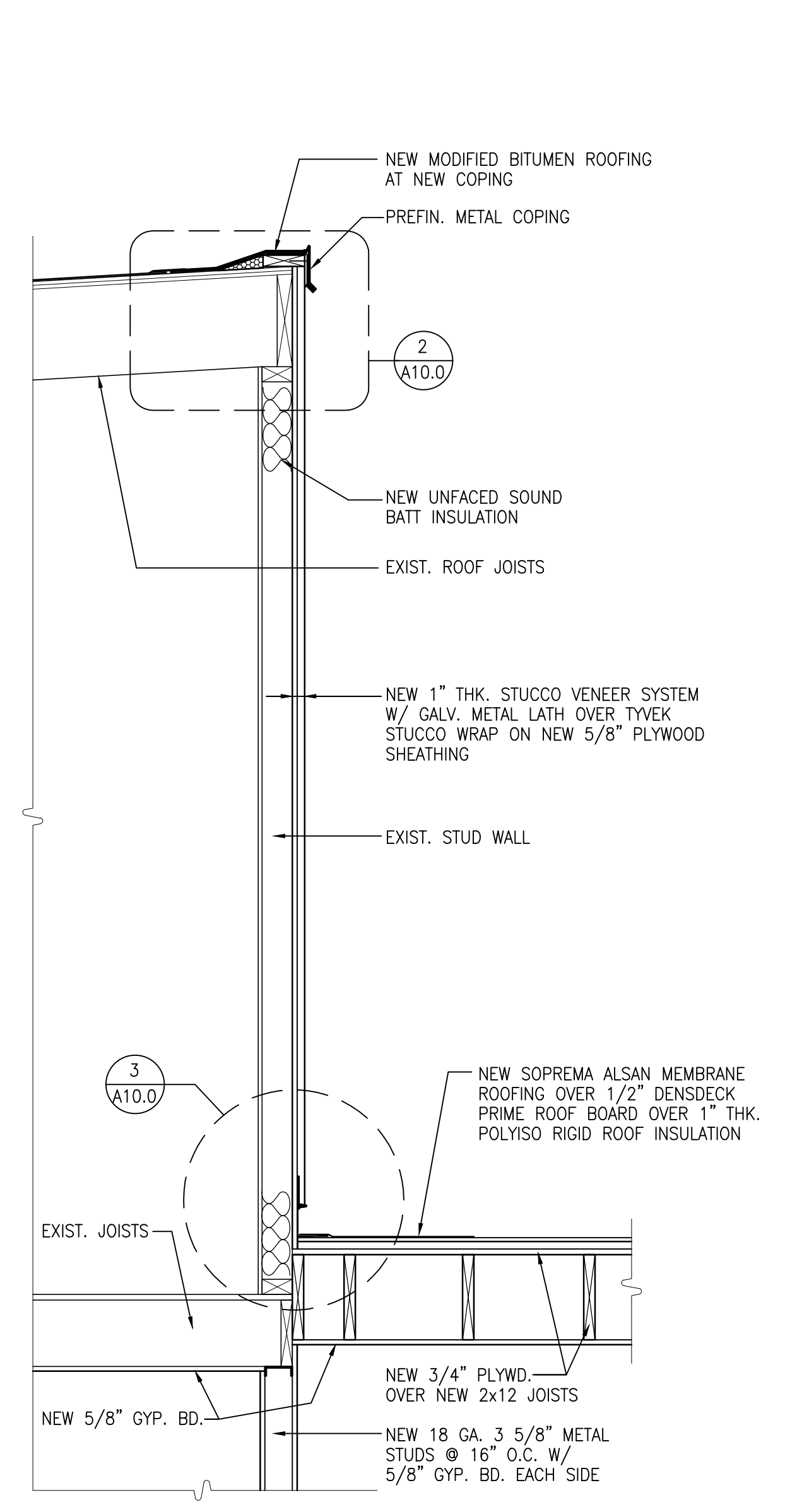


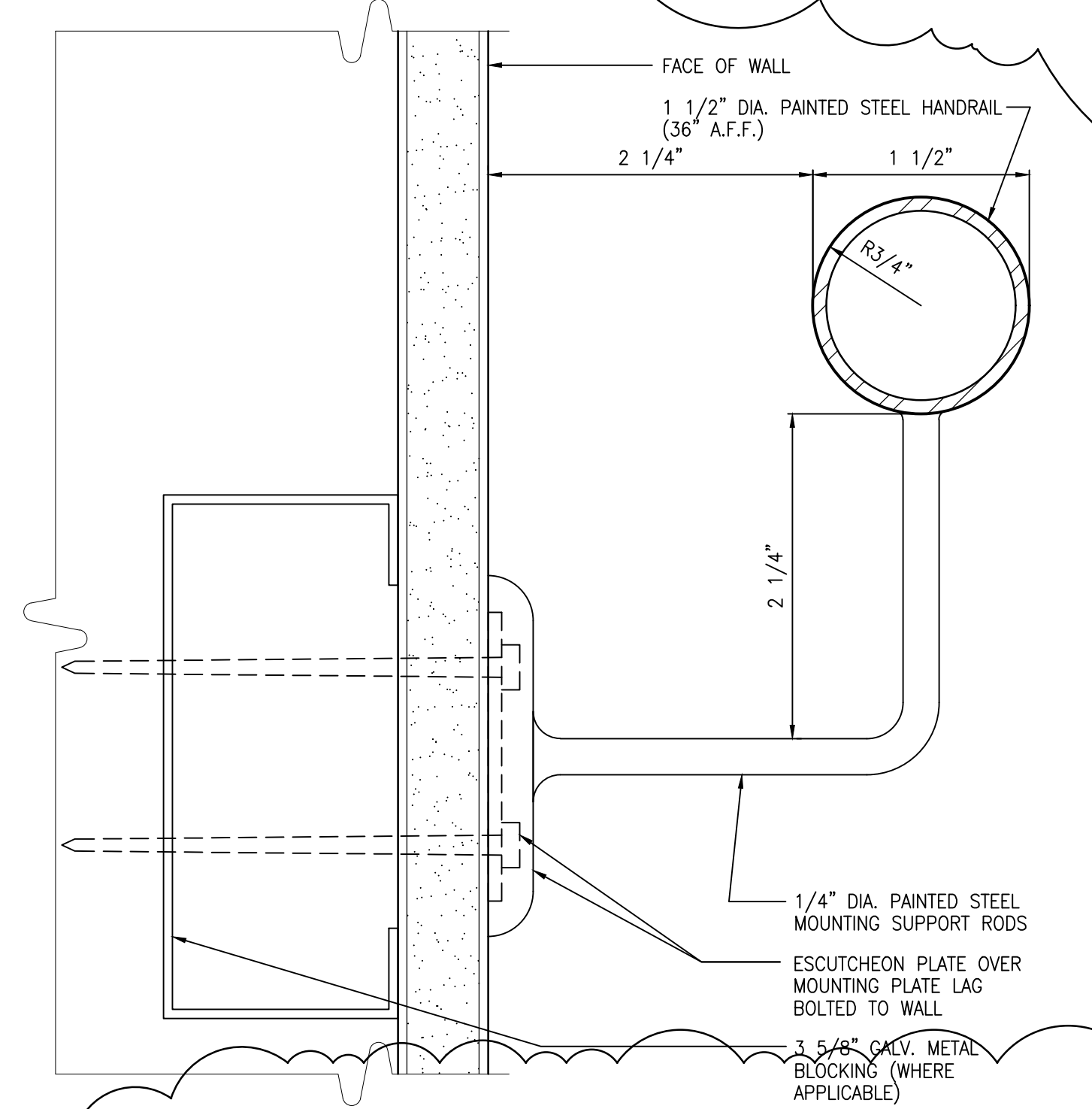
1 NEW ENTRANCE RAMP SECTION
SCALE: 3/4"=1'-0"



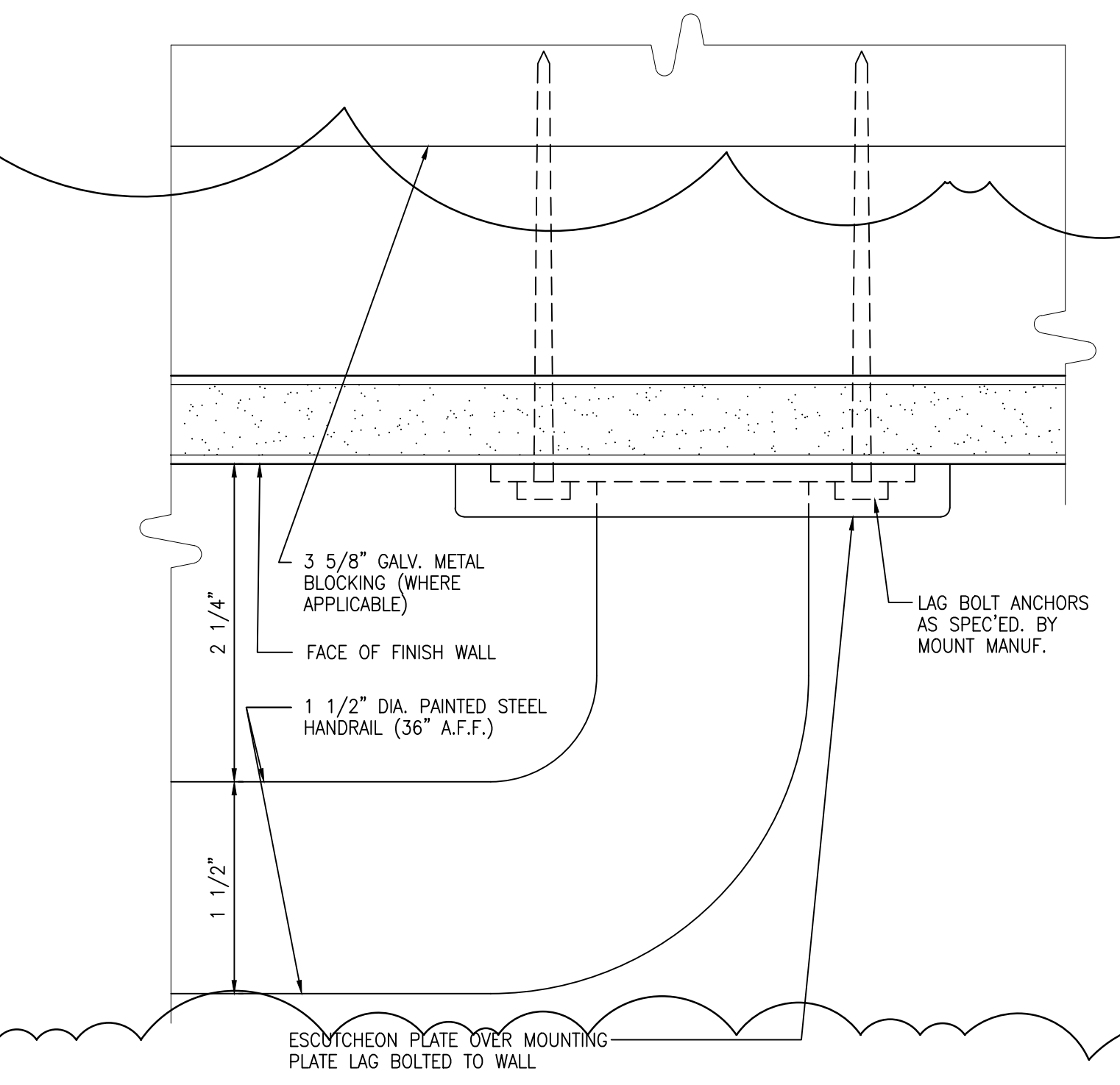
2 NEW ENTRANCE RAMP SECTION
SCALE: 3/4"=1'-0"



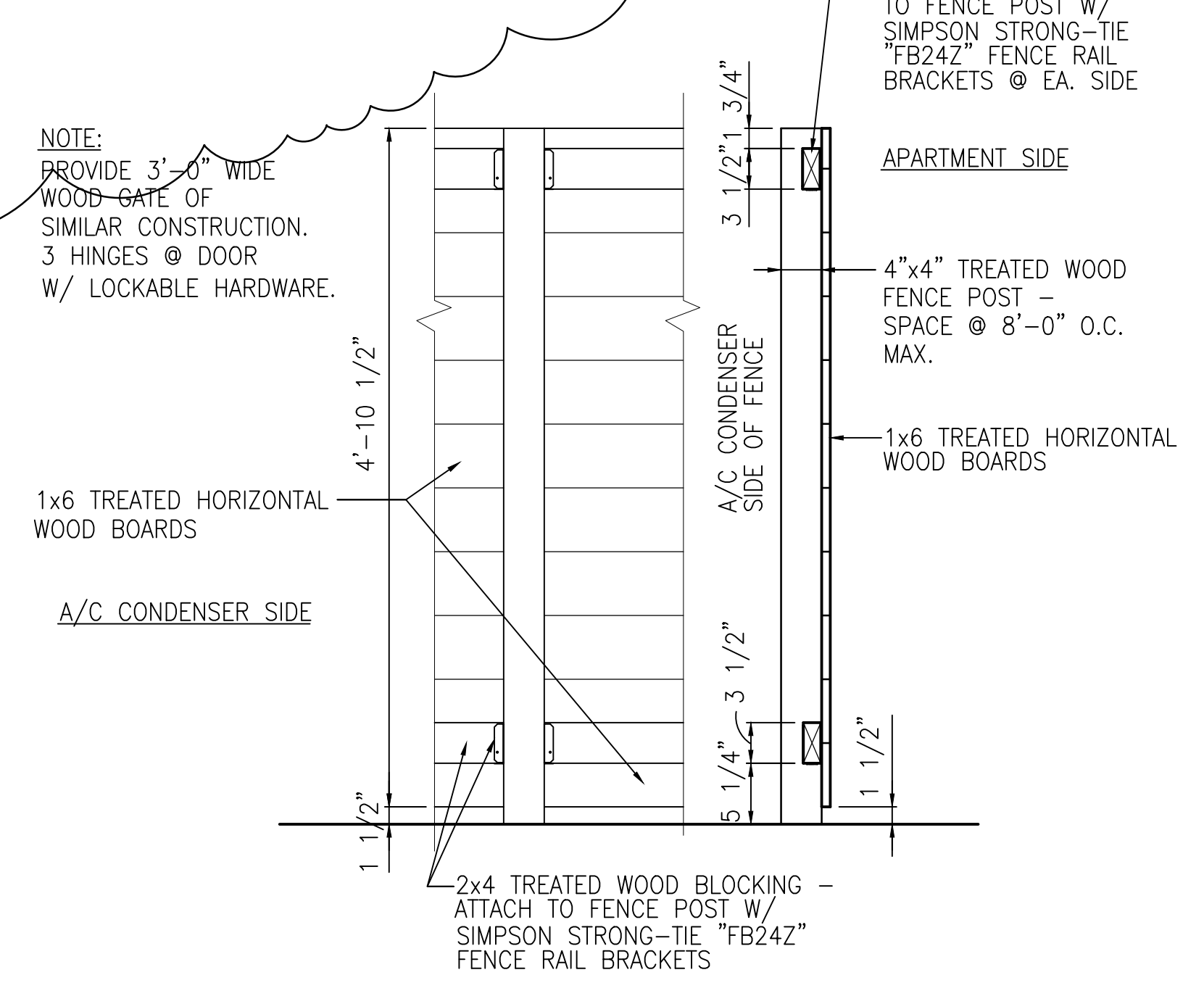
5 WALL SECTION
SCALE: 3/4"=1'-0"



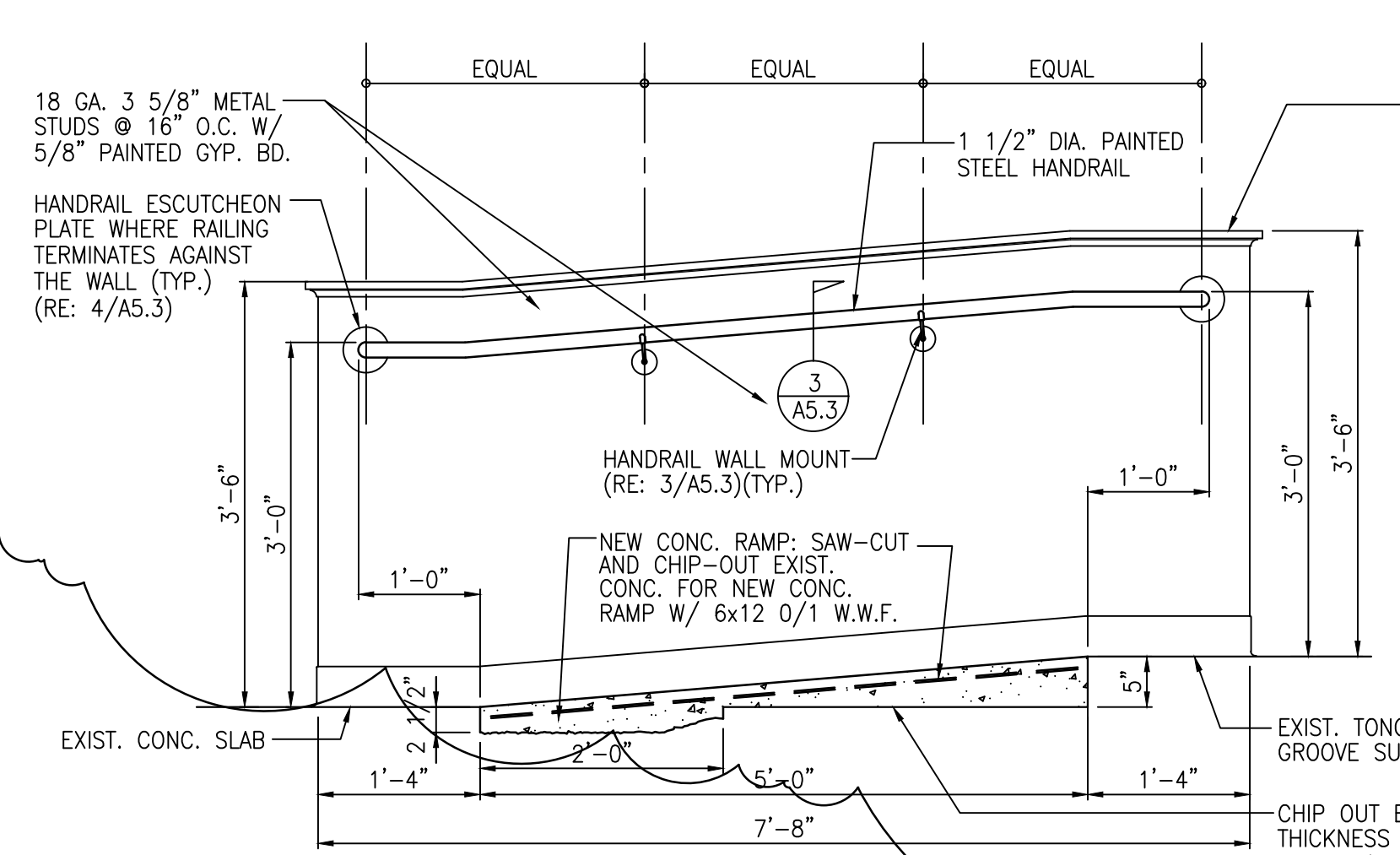
3 HANDRAIL WALL MOUNT DETAIL
SCALE: FULL



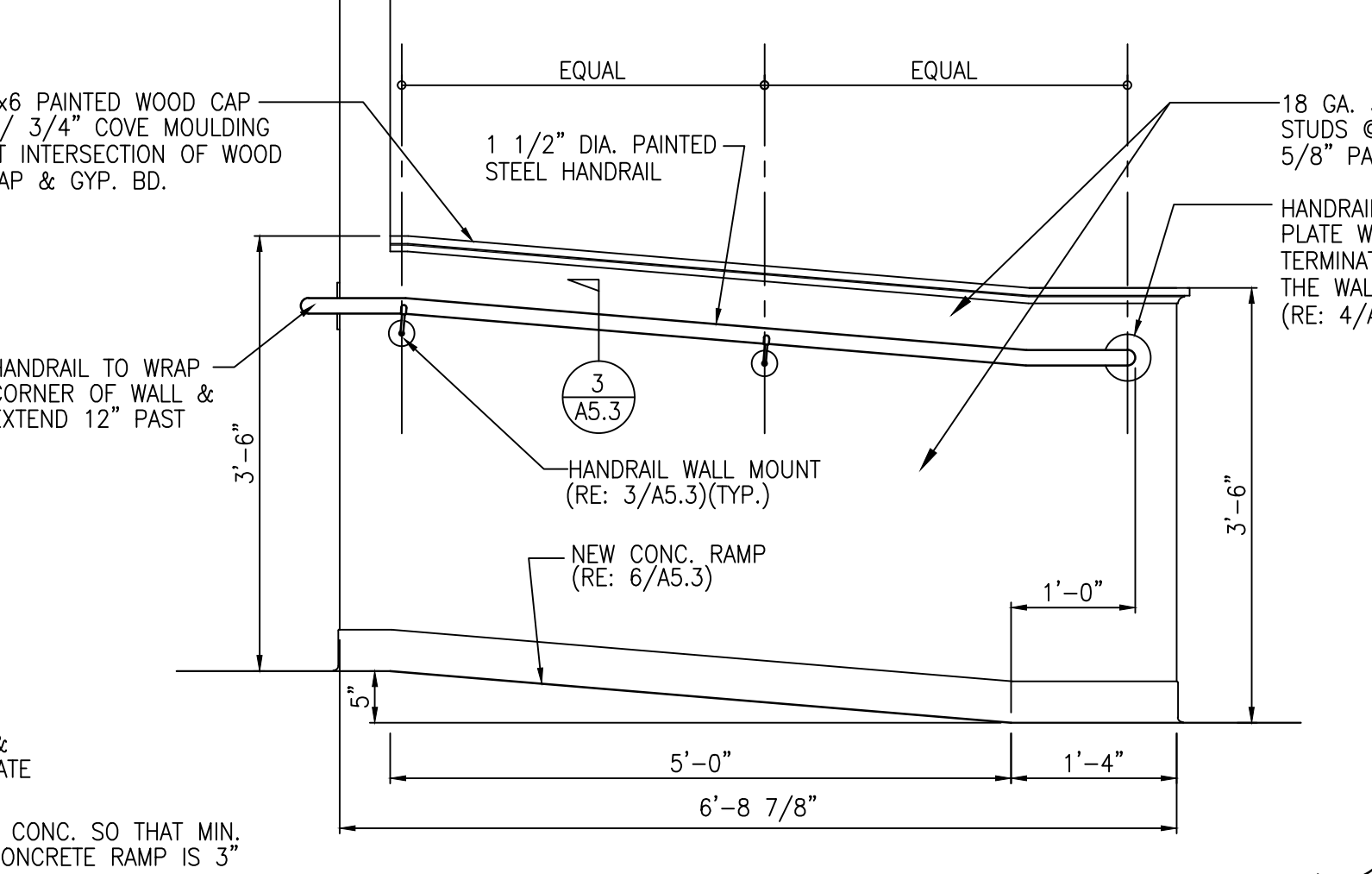
4 HANDRAIL ESCUTCHEON PLATE DETAIL
SCALE: FULL



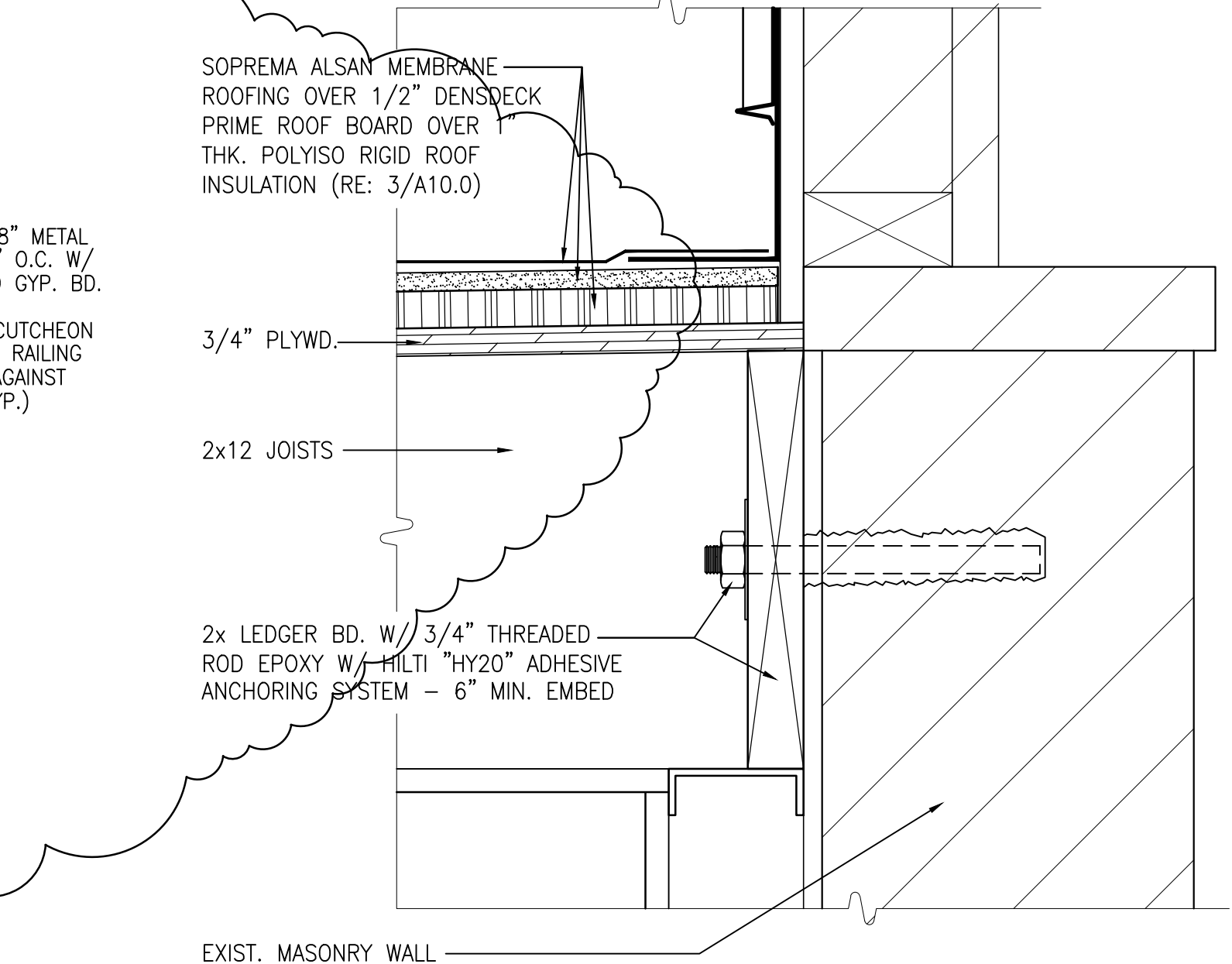
8 COURTYARD FENCE DETAIL
SCALE: 1/2"=1'-0"



6 NEW RAMP SECTION
SCALE: 3/4"=1'-0"



7 NEW RAMP HANDRAIL ELEVATION
SCALE: 3/4"=1'-0"



9 NEW LEDGER DETAIL
SCALE: 3"=1'-0"



New Bakery & Apartments at
317 Chartres St.
New Orleans, Louisiana 70130

SCALE: AS SHOWN FILE NAME: 21036\Elev-Sect02.C
DATE: Feb. 1, 2022

STEVEN J. FINEGAN ARCHITECTS, LTD.
A PROFESSIONAL CORPORATION
123 S. Pierce St. - New Orleans, LA 70119
(504)486-5744 www.stevfineganarchitect.com
E-mail: stevfinegan@nocoxmail.com

NO.	DATE	REVISIONS

A5.3

This drawing is the property of STEVEN J. FINEGAN ARCHITECTS, LTD. It is not to be reproduced, copied or altered in whole or in part. It is not to be used for any purpose without the approval of STEVEN J. FINEGAN ARCHITECTS, LTD. and is to be returned on request.