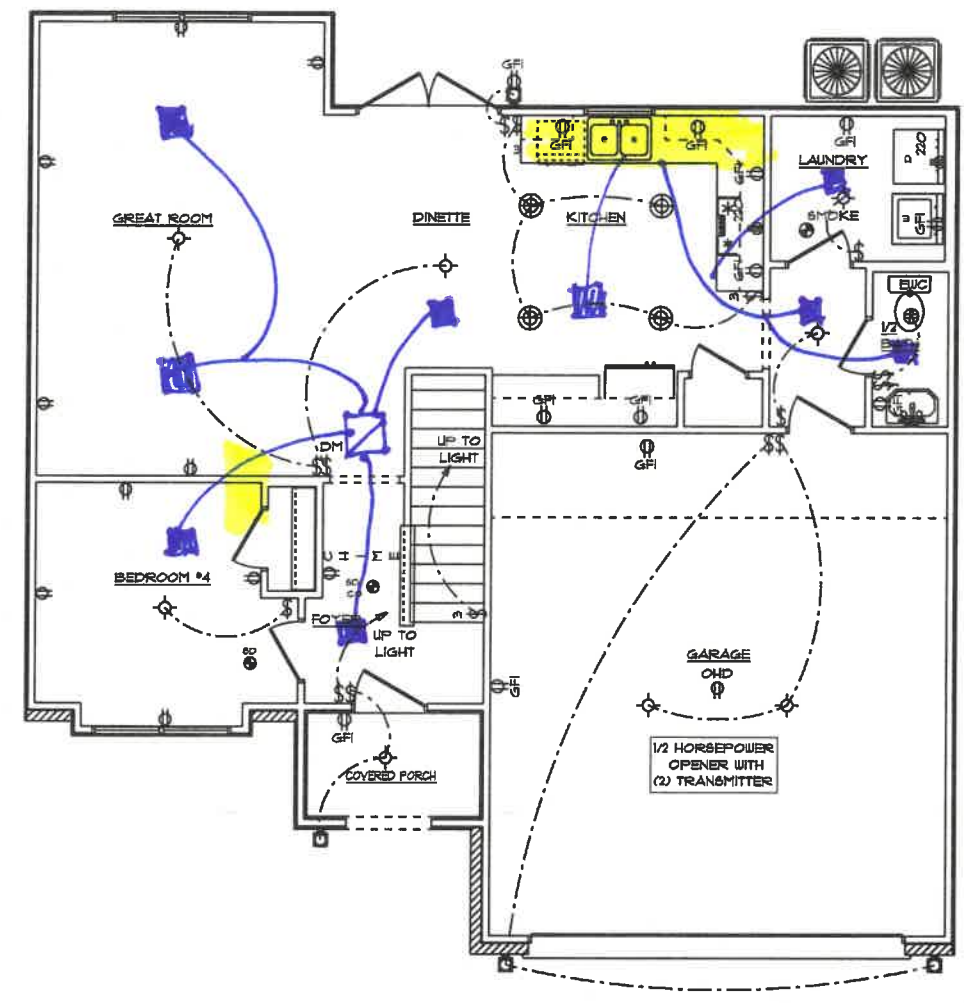


HVAC

FINAL APPROVED: 6/6/21
REVISED ON:

- ELECTRICAL NOTES:**
- ALL SMOKE DETECTORS TO BE INTER CONNECTED WITH BATTERY BACKUP
 - ARC FAULT PROTECTION PER CODE
 - GARAGE DOOR LOW VOLTAGE WIRING BY ELECTRICIAN
 - TWO SEPARATE KITCHEN GENERAL ELECTRIC OUTLET CIRCUITS FED BY NUMBER 12 WIRE 1 ON 20 AMP BREAKERS REQUIRED IN KITCHEN
 - ALL OUTLETS INSTALLED IN BATHROOMS, GARAGES, & UNFINISHED BASEMENTS SHALL HAVE GFCI PROTECTION ALONG WITH OUTLETS LOCATED W/IN 6'-0" OF LAUNDRY, UTILITY, & WET BAR SINKS & ALL OUTLETS SERVING KITCHEN COUNTER TOP SURFACES.
 - PROGRAMMABLE THERMOSTAT STANDARD
 - CO DETECTORS STANDARD
 - (1) DUAL SENSOR (PHOTOELECTRIC & IONIZATION) SMOKE DETECTOR PER FLOOR. ALL OTHER SMOKE DETECTORS TO BE EITHER PHOTOELECTRIC OR IONIZATION TYPE DEVICES
 - LED LIGHT BULBS FOR ALL HANGING FIXTURES
 - MOUNTING HEIGHTS
 - VANITY LIGHTS: 80" AFF
 - WALL SCONES: 66" AFF
 - PENDANT LIGHTS: 66" AFF
 - CHANDELIERS (TO BTM OF FIXTURE)
 - FOYER 3' CEILING: 84"
 - FOYER OVER 9' CLG: 90"
 - DINING ROOM: 60"
- ELECTRICAL ITEMS SHOWN FOR REFERENCE ONLY. THE ELECTRICIAN WILL LAYOUT THE HOUSE PER CODE AND MAY VARY FROM ELECTRICAL PLAN.

LOCATE PHONE AND CABLE W/ ELECTRICIAN



ASHLEY FRENCH COUNTRY / CUSTOM
 FIRST FLOOR PLAN
 9' CEILING HEIGHT
 ELECTRICAL PLAN

DRAWN BY: SH
 DATE: 7/5/2022
 SCALE: 1/8" = 1'-0"
 SHEET: 4

SQUARE FOOTAGES:
 MAIN FLOOR: 870 S.F.
 SECOND FLOOR: 1263 S.F.
 GARAGE: 449 S.F.
 PORCHES: 40 S.F.

CUSTOM BUILT FOR:
 GEYONI BOLDEN & CEDRIC NATION
 JOB #: BR245-02-0142
 CN #: 33691
 LOCATION: 15100 MERCEDES BLVD
 NEW ORLEANS, LOUISIANA, 70114
 ORLEANS PARISH

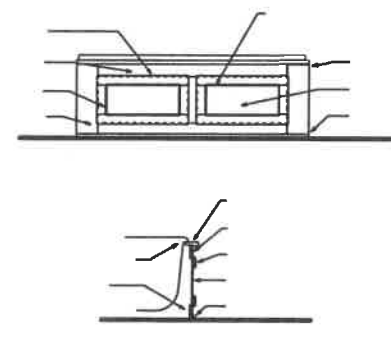
21135 James Chapel Rd, North
 Holden, LA 70744
 (811) 267-3492
 www.schumacherhomes.com

SCHUMACHER HOMES
 Fred Schumacher

© 1992-2022 SCHUMACHER HOMES OPERATIONS, INC. ALL RIGHTS RESERVED. THE DESIGN AND CONSTRUCTION OF THIS PROJECT IS THE PROPERTY OF SCHUMACHER HOMES OPERATIONS, INC. AND ITS RELATED AFFILIATES. SCHUMACHER HOMES OPERATIONS, INC. AND ITS RELATED AFFILIATES, INCLUDING SCHUMACHER HOMES OPERATIONS, INC. AND ITS RELATED AFFILIATES, SHALL NOT BE HELD LIABLE FOR ANY DAMAGES, INCLUDING REASONABLE ATTORNEY'S FEES, ARISING FROM THE USE OF THIS DRAWING OR ANY OTHER DRAWING OR TO BUILD A STRUCTURE, REPRODUCED, COPIED, OR MODIFIED IN WHOLE OR IN PART, WITHOUT THE WRITTEN CONSENT OF SCHUMACHER HOMES, AND SUCH REPRODUCTION OR MODIFICATION WITHOUT THE WRITTEN CONSENT OF SCHUMACHER HOMES OPERATIONS, INC. AND ITS RELATED AFFILIATES, MAY BE PROSECUTED AND MAY RESULT IN DAMAGES IN EXCESS OF \$100,000 PER ACT OF INFRINGEMENT.

Hvac

FINAL APPROVED: 6/6/21
REVISED ON:

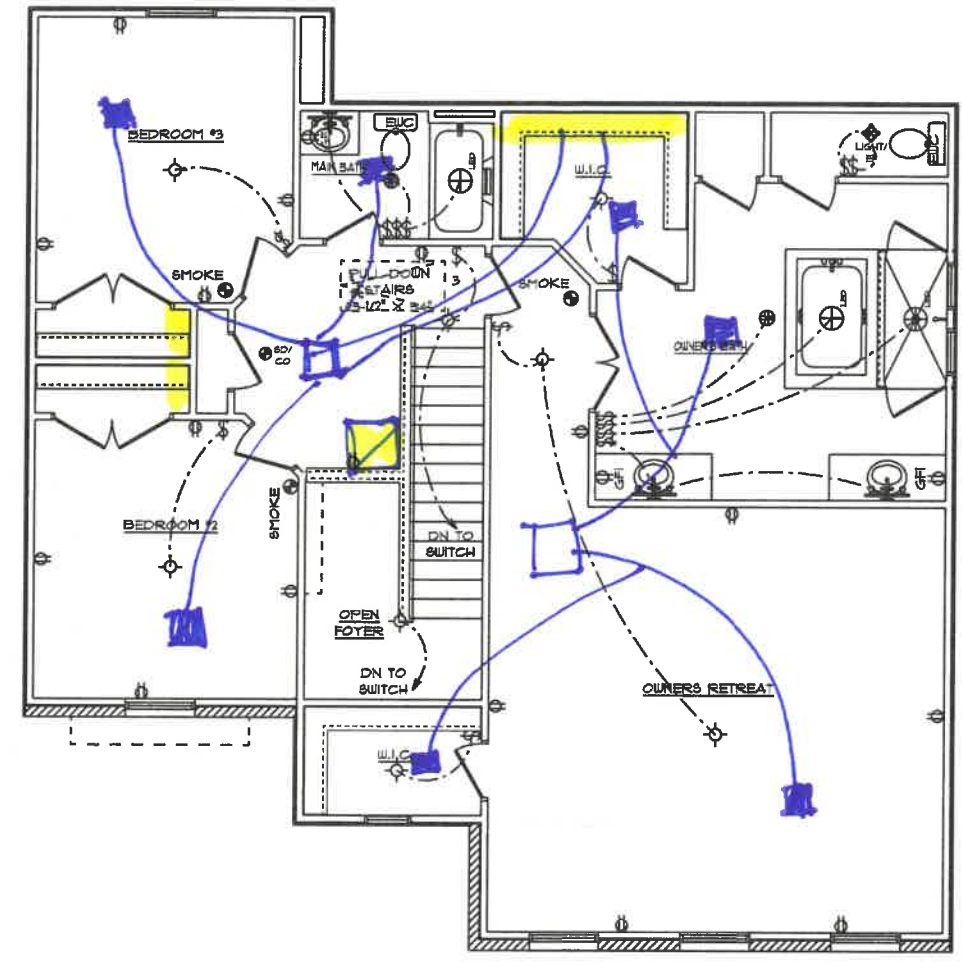


ELECTRICAL NOTES:

- ALL SMOKE DETECTORS TO BE INTER CONNECTED WITH BATTERY BACKUP
- ARC FAULT PROTECTION PER CODE
- GARAGE DOOR LOW VOLTAGE WIRING BY ELECTRICIAN
- TWO SEPARATE KITCHEN GENERAL ELECTRIC OUTLET CIRCUITS FED BY NUMBER 12 WIRE & ON 20 AMP BREAKERS REQUIRED IN KITCHEN
- ALL OUTLETS INSTALLED IN BATHROOMS, GARAGES, & UNFINISHED BASEMENTS SHALL HAVE GFCI PROTECTION ALONG WITH OUTLETS LOCATED WITHIN 6'-0" OF LAUNDRY, UTILITY, & WET BAR SINKS & ALL OUTLETS SERVING KITCHEN COUNTER TOP SURFACES.
- PROGRAMMABLE THERMOSTAT STANDARD
- CO DETECTORS STANDARD
- (1) DUAL SENSOR (PHOTOELECTRIC & IONIZATION) SMOKE DETECTOR PER FLOOR. ALL OTHER SMOKE DETECTORS TO BE EITHER PHOTOELECTRIC OR IONIZATION TYPE DEVICES
- LED LIGHT BULBS FOR ALL HANGING FIXTURES
- MOUNTING HEIGHTS
 - VANITY LIGHTS: 80" AFF
 - WALL SCONCES: 66" AFF
 - PENDANT LIGHTS: 66" AFF
 - CHANDELIERS (TO BTM OF FIXTURE)
 - FOYER 9' CEILING: 84"
 - FOYER OVER 9' CLG: 90"
 - DINING ROOM: 60"

* ELECTRICAL ITEMS SHOWN FOR REFERENCE ONLY. THE ELECTRICIAN WILL LAYOUT THE HOUSE PER CODE AND MAY VARY FROM ELECTRICAL PLAN.

LOCATE PHONE AND CABLE W/ ELECTRICIAN



ASHLEY FRENCH COUNTRY / CUSTOM
SECOND FLOOR PLAN
8' CEILING HEIGHT
ELECTRICAL PLAN

<p>SCHUMACHER HOMES 21135 James Chapel Rd, North Holden, LA 70144 (811) 267-3482 www.echumacherhomes.com</p>	<p>CUSTOM BUILT FOR: GEYONI BOLDEN & CEDRIC NATION JOB #: BR345-02-0142 CR #: 33691 LOCATION: 131001 MERCEDES BLVD NEW ORLEANS, LOUISIANA, 70114 ORLEANS PARISH</p>	<p>SQUARE FOOTAGES: MAIN FLOOR: 870 S.F. SECOND FLOOR: 263 S.F. GARAGE: 448 S.F. PORCHES: 40 S.F.</p>	<p>DATE: 7/9/2022 SCALE: 1/8" = 1'-0" DRAWN BY: SH DATE: 7/9/2022 SCALE: 1/8" = 1'-0" DRAWN BY: SH</p>	<p>FINAL APPROVED: 6/6/21 REVISED ON:</p>
---	---	---	--	---

© 1993-2022 SCHUMACHER HOMES OPERATIONS, INC. ALL RIGHTS RESERVED. THE PLANS AND THE DRAWINGS SHOWN HEREIN ARE THE PROPERTY OF SCHUMACHER HOMES OPERATIONS, INC. NO PART OF THESE PLANS OR DRAWINGS ARE TO BE REPRODUCED, COPIED, OR MODIFIED IN WHOLE OR PART, WITHOUT THE EXPRESS WRITTEN CONSENT OF SCHUMACHER HOMES, AND SUCH CONSENT IS A VIOLATION OF UNITED STATES COPYRIGHT LAW AND MAY RESULT IN DAMAGES IN EXCESS OF \$100,000 PER ACT OF INFRINGEMENT.