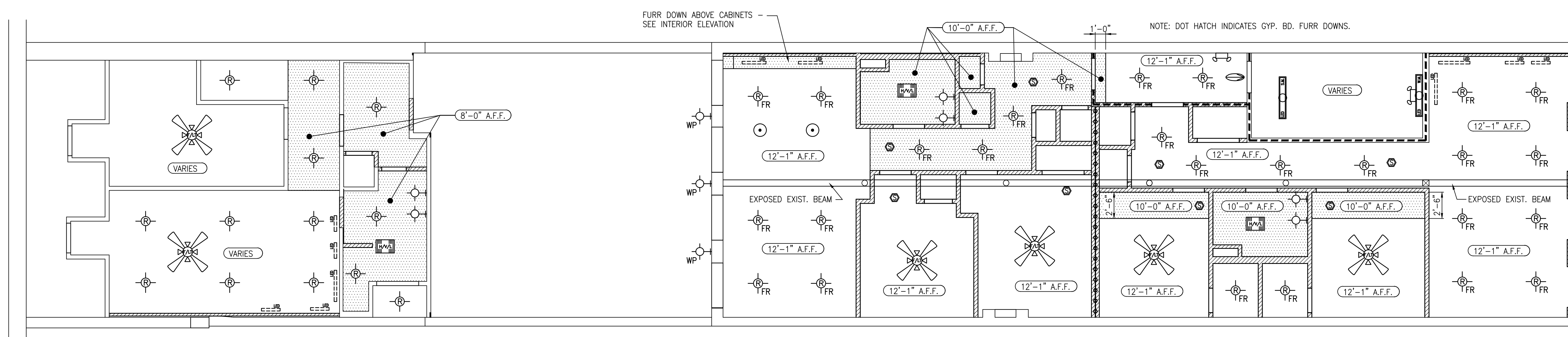


1 NEW FIRST FLOOR REFLECTED CEILING PLAN
SCALE: 3/16"=1'-0"



2 NEW SECOND FLOOR REFLECTED CEILING PLAN
SCALE: 3/16"=1'-0"



New Bakery & Apartments at 317 Chartres St. New Orleans, Louisiana 70130		
SCALE: AS SHOWN	FILE NAME: 21036\Plan03.C	
DATE: Dec. 28, 2021		
STEVEN J. FINEGAN ARCHITECTS, LTD. A PROFESSIONAL CORPORATION 123 S. Pierce St. - New Orleans, LA 70119 (504)486-5744 www.stevfineganarchitect.com E-mail: stevfinegan@nocoxmail.com		
NO.	DATE	REVISIONS
		A9.0
<small>This drawing is the property of STEVEN J. FINEGAN ARCHITECTS, LTD. It is not to be reproduced, copied or altered in whole or in part. It is not to be used for any purpose without the approval of STEVEN J. FINEGAN ARCHITECTS LTD. and is to be returned on request.</small>		