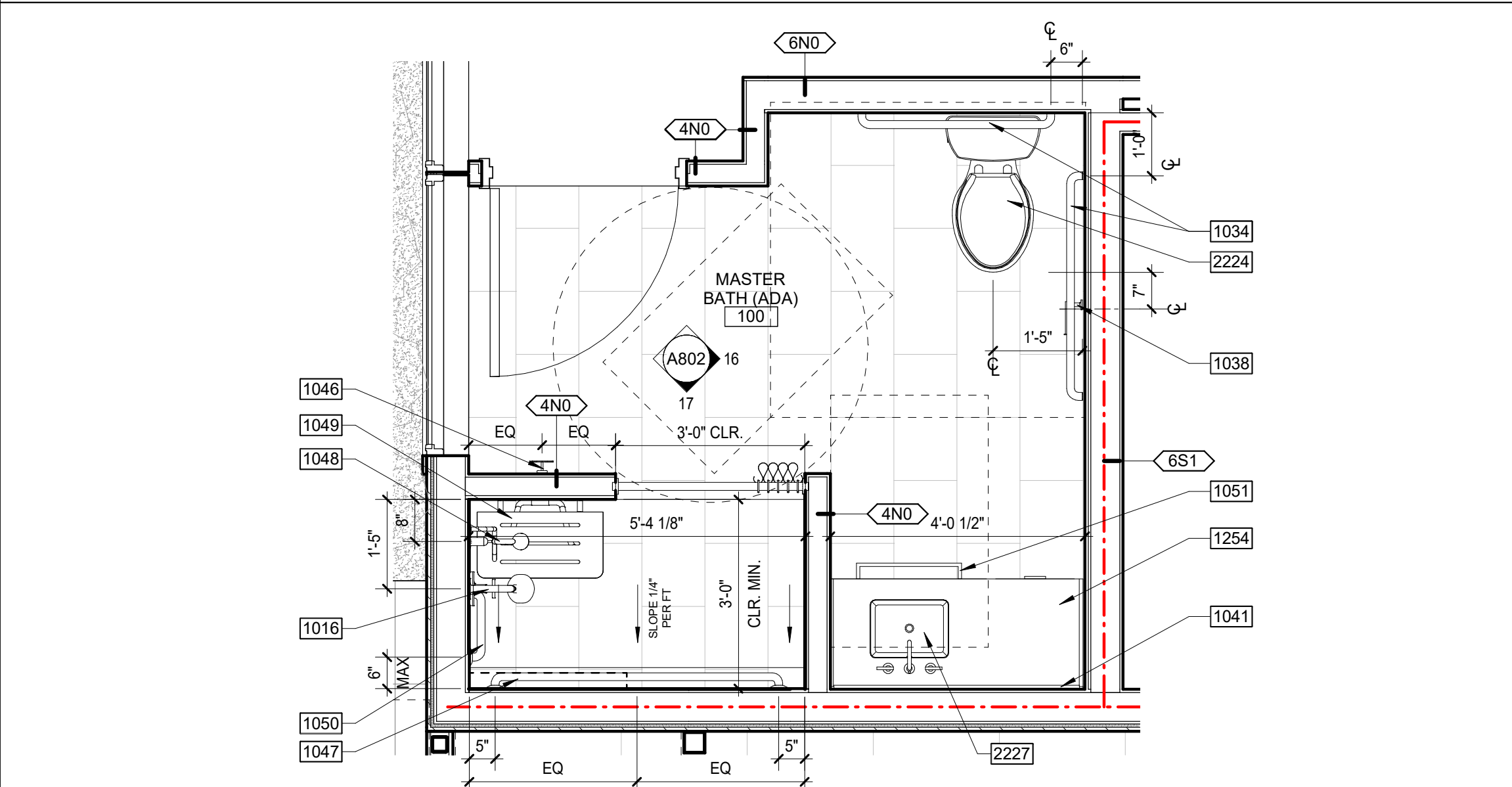
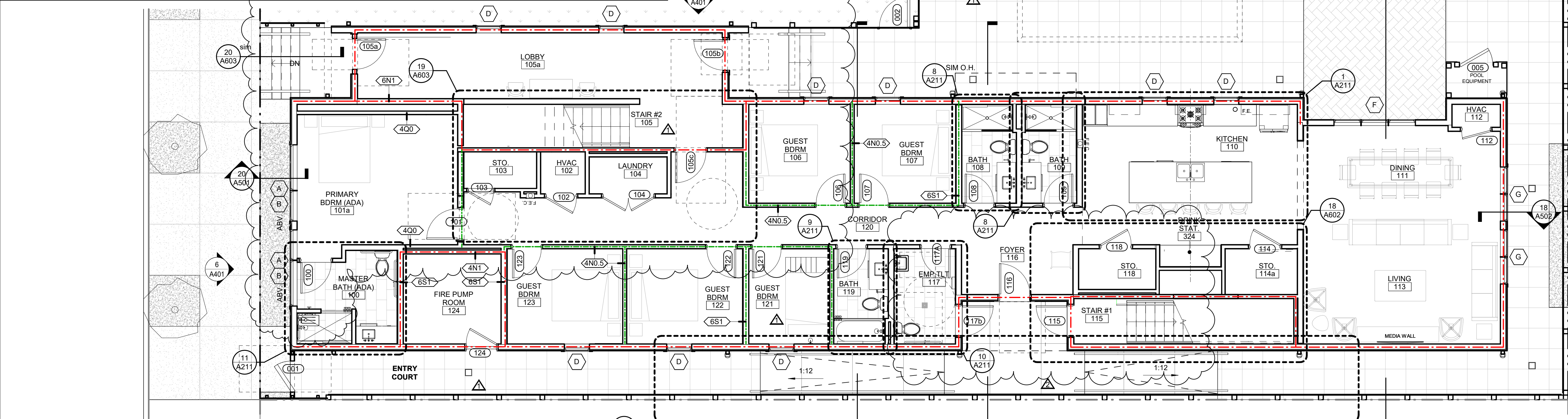


1 ENLARGED PLAN - ACCESSIBLE KITCHEN
1/2" = 1'-0"



11 ENLARGED FLOOR PLAN - ADA BATHROOM
1/2" = 1'-0"



16 FIRST FLOOR PLAN
3/16" = 1'-0"

GENERAL NOTES

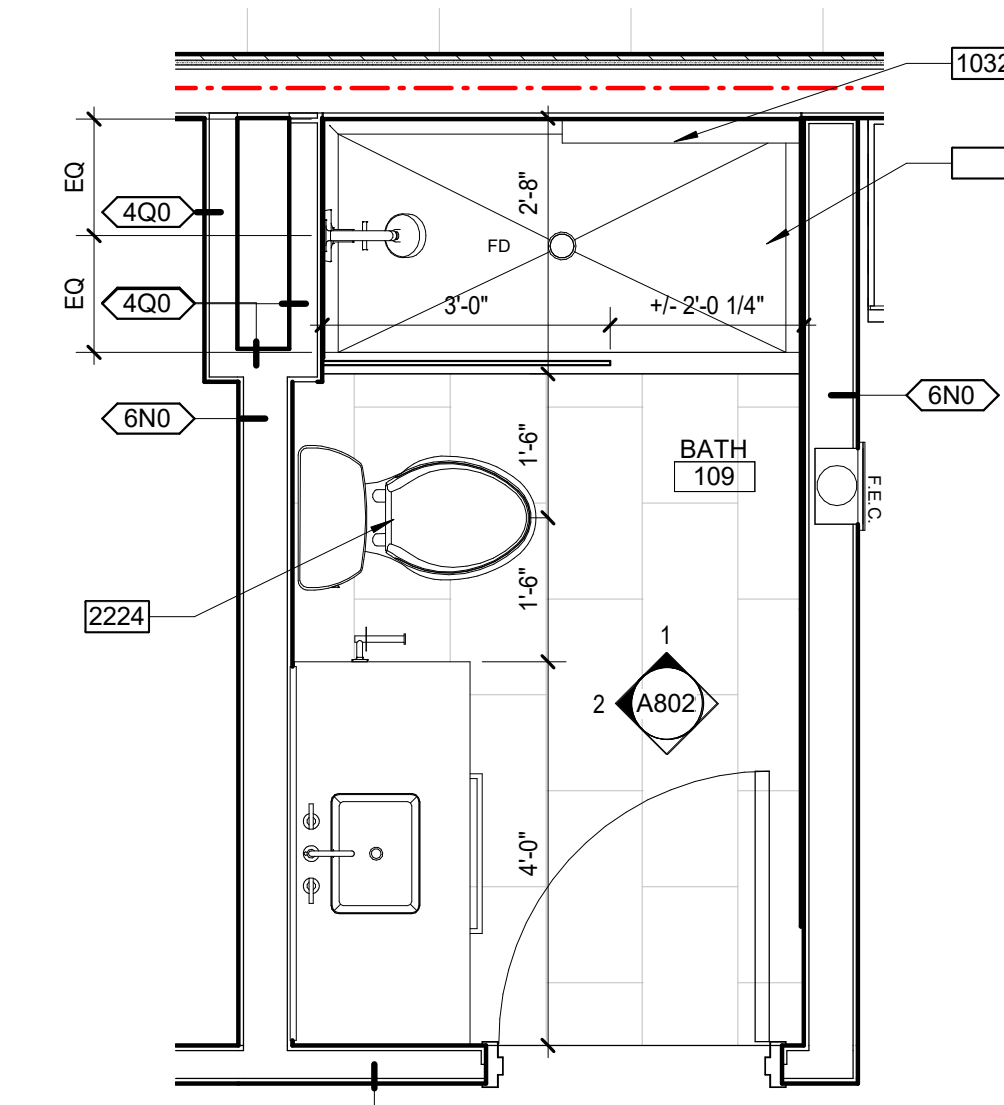
- REFER TO EXTERIOR ELEVATIONS FOR WINDOW DESIGNATIONS NOT SHOWN ON PLAN.
- ALL INTERIOR PARTITIONS ARE TYPE 4N0.5, UNLESS OTHERWISE NOTED
- SEE SHEET A321 FOR PARTITION TYPES

KEYNOTE LEGEND

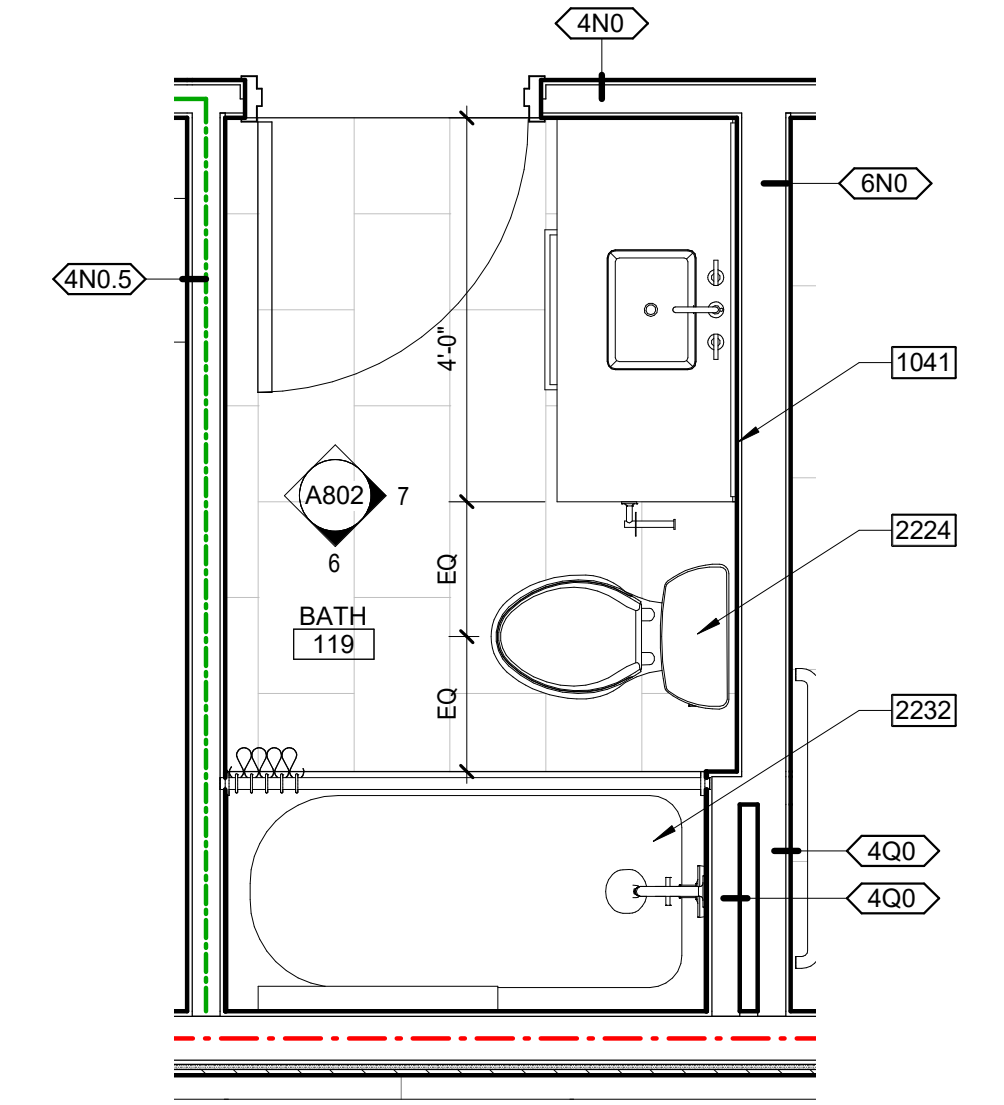
- 1016 SHOWER HEAD
- 1031 SURFACE MOUNTED PAPER TOWEL DISPENSER / WASTE RECEPTACLE, MOUNTED AS PER ADA-ABA REQUIREMENTS
- 1032 SOLID SURFACE AMENITY SHELF, TYP.
- 1033 LIQUID SOAP DISPENSER, MOUNTED AS PER ADA-ABA REQUIREMENTS
- 1034 ADA-ABA COMPLIANT S.S. GRAB BAR 36" REAR AND 42" SIDE; PROVIDE BLOCKING AS REQ'D
- 1038 TOILET PAPER HOLDER, PROVIDE BLOCKING
- 1040 30"W X 36"H WALL MOUNTED MIRROR WITH INTEGRATED LED LIGHT, MOUNTED AS PER ADA-ABA REQUIREMENTS
- 1041 48.75"W X 34.75"H WALL MOUNTED MIRROR WITH INTEGRATED LED LIGHT
- 1046 ROBE HOOK
- 1047 ADA-ABA COMPLIANT S.S. GRAB BAR; PROVIDE BLOCKING AS REQ'D
- 1048 ADJUSTABLE SHOWER SPRAY UNIT
- 1049 18" X 15" FOLDABLE SHOWER SEAT
- 1050 ADA-ABA COMPLIANT 12" S.S. GRAB BAR; PROVIDE BLOCKING AS REQ'D
- 1051 VANITY MOUNTED TOWEL BAR
- 1254 QUARTZ COUNTERTOP AND BACKSPLASH, RETURN BACKSPLASH AT WALLS
- 2224 ADA-ABA COMPLIANT FLOOR MOUNTED TOILET AND TOILET SEAT; RE: PLUMBING
- 2227 UNDERMOUNT SINK; INSULATE ALL EXPOSED PLUMBING AND SUPPLY LINES; RE: PLUMBING

KEYNOTE LEGEND

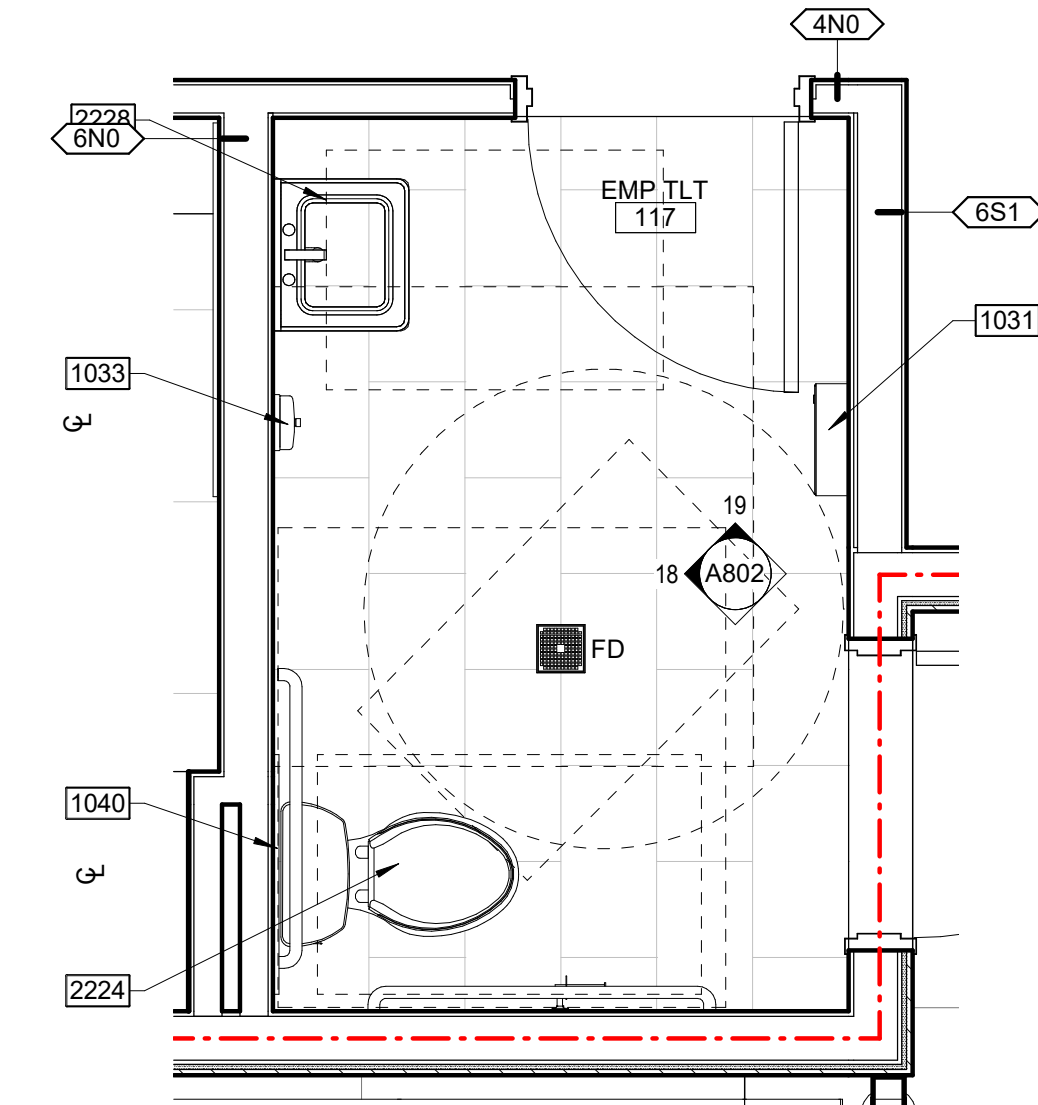
- 2228 ADA-ABA COMPLIANT WALL MOUNTED LAVATORY; INSULATE ALL EXPOSED PLUMBING AND SUPPLY LINES; RE: PLUMBING
- 2232 CAST IRON BATHTUB



8 ENLARGED PLAN - TYP. BATH
1/2" = 1'-0"



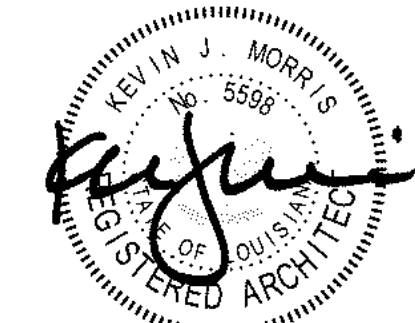
9 ENLARGED PLAN - TYP. BATH
1/2" = 1'-0"



10 ENLARGED PLAN - EMP. TLT.
1/2" = 1'-0"

HOLLY & SMITH ARCHITECTS
HAMMOND
T 985.345.5210
NEW ORLEANS
T 504.585.1315
www.hollyandsmith.com

BARONNE STREET HOTEL
1426 BARONNE STREET,
NEW ORLEANS, LA 70113



NO.	DESCRIPTION	DATE
1	Addendum No. 1	11.5.21
2	Permit Revisions	05.27.22

PROJECT NO.	21009
PHASE	CD
DATE	10/13/21
PROJECT MANAGER	
QUALITY CONTROL	

This drawing, as an instrument of service, is and shall remain the property of the Architect and shall not be reproduced, published, or used in any way without the permission of the Architect.
© Holly & Smith Architects, APAC

PERMIT / BID ISSUE

A211
FIRST FLOOR PLAN - REFERENCE / ENLARGED PLANS

H/S

5/27/2022 1:18:40 PM

C:\Users\coie\Documents\21009-BSH-coie\YMKP9.rvt