

MAY VERSION 1

LEFT SIDE WALL EXTRUSION EXTENDS TO GROUND

CUTOUT ON GROUND FLOOR HAS VERTICAL SHEATHING TO RELATE TO THE ADJACENT VERTICAL SCREEN



APRIL ARC MEETING RENDERING

- The ARC voted to defer your application for additional review. The ARC agreed that the following changes should be made:
- Extend the left side of the cantilevered second story wall down to the first floor to break up the massing on the front façade.
  - Remove the Juliet balcony and make it either a true balcony or a deeply recessed window.
  - At the side hall area at the first-floor entry, extend the vertical pickets up to give the impression of an enclosed space. Allow the pickets to frame the space like a gate.
  - Add more operable windows throughout.

MAY VERSION 2

CONCRETE PLANTER BASE WRAPS AS PLINTH FOR LEFT SIDE WALL EXTRUSION

HORIZONTAL SIDING ON GROUND FLOOR WRAPS INSIDE CORNER AROUND LEFT SIDE WALL EXTRUSION



FRONT FENCE REMOVED FOR CLARITY



FRONT FENCE REMOVED FOR CLARITY

URQUHART HOUSE

3145 Urquhart St.  
New Orleans, LA, 70117

marais  
marais architects llc

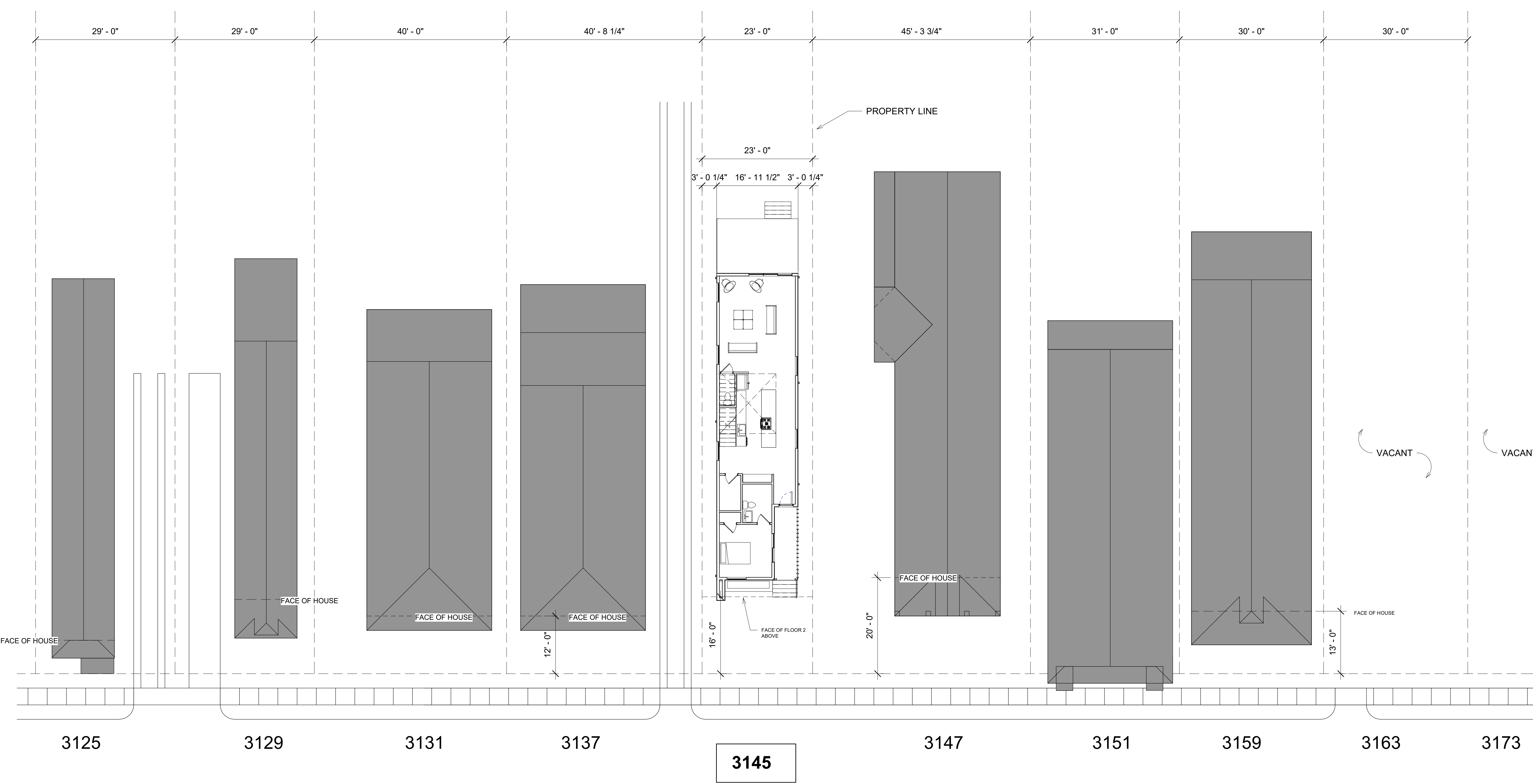
ARCHITECT:  
MARAIS ARCHITECTS, LLC  
jared@maraisdesignbuild.com

ISSUANCE:  
ARC REVIEW MAY  
05.17.22

SHEET TITLE:  
Rendering  
SHEET NUMBER:  
ARC-1

DATE: FOR PERMIT  
SCALE: 1 1/2" = 1'-0"





URQUHART  
HOUSE

3145 Urquhart St.  
New Orleans, LA, 70117

marais  
marais architects llc

ARCHITECT:  
MARAI ARCHITECTS, LLC  
jared@maraisdesignbuild.com

ISSUANCE:  
ARC REVIEW MAY  
05.17.22

SHEET TITLE:  
Site Plan and  
Context  
SHEET NUMBER:  
ARC-3

DATE: FOR PERMIT  
SCALE: 3/32" = 1'-0"



4 Urquhart - Rear Elevation



2 Urquhart - Right Side



1 Urquhart - Right Side



3 Urquhart - Front Elevation

# URQUHART HOUSE

3145 Urquhart St.  
New Orleans, LA, 70117

**marais**  
marais architects llc

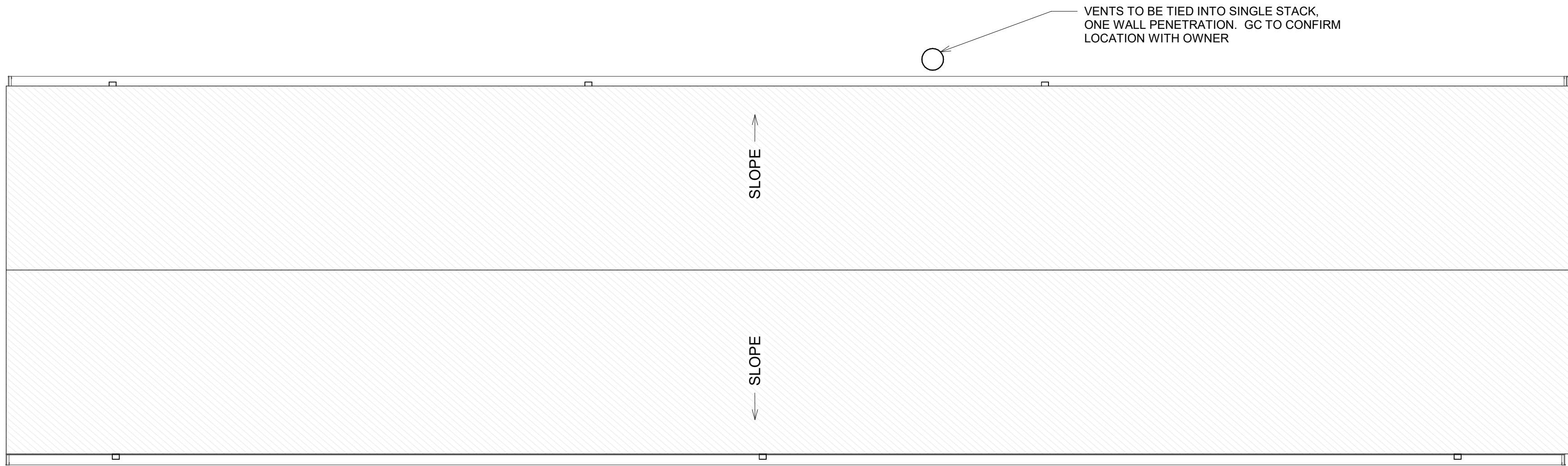
ARCHITECT:  
MARAIS ARCHITECTS, LLC  
jared@maraisdesignbuild.com

ISSUANCE:  
ARC REVIEW MAY  
05.17.22

SHEET TITLE:  
**Renderings**  
SHEET NUMBER:  
**ARC-4**

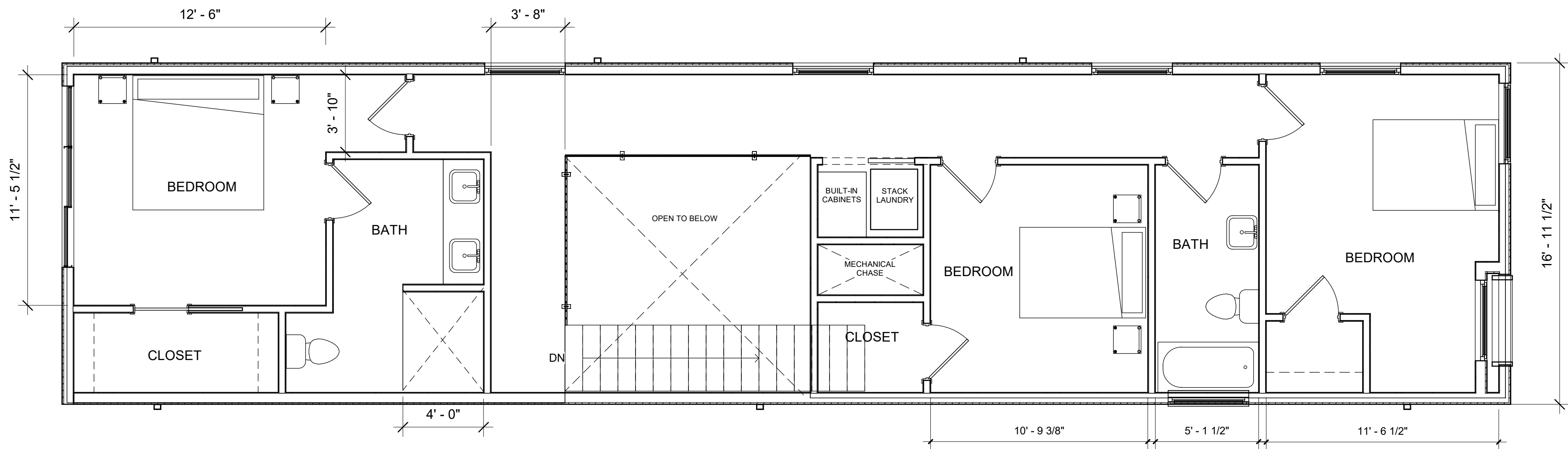
DATE: FOR PERMIT  
SCALE:



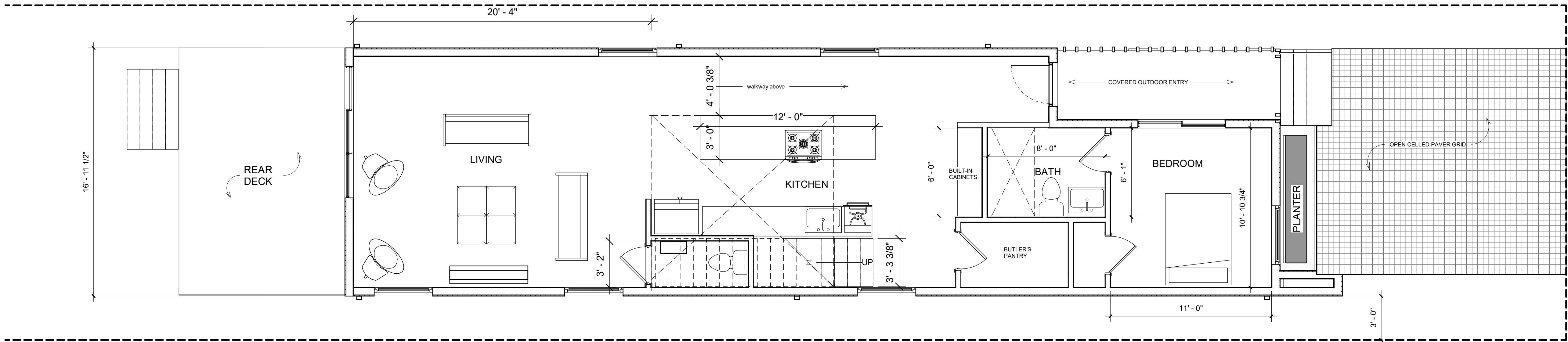


FLOOR 1
1,000 SQ FT INTERIOR
192 SQ FT BACK DECK
70 SQ FT FRONT DECK
FLOOR 2
1,050 SQ FT INTERIOR
NOT INCLUDING DOUBLE HEIGHT SPACE
<u>2,050 SQ FT TOTAL INTERIOR</u>
4 BEDS
3 1/2 BATHS

3 Roof Plan  
1/4" = 1'-0"



2 Floor Plan - Level 2  
1/4" = 1'-0"



1 Floor Plan - Level 1  
1/4" = 1'-0"

# URQUHART HOUSE

3145 Urquhart St.  
New Orleans, LA, 70117

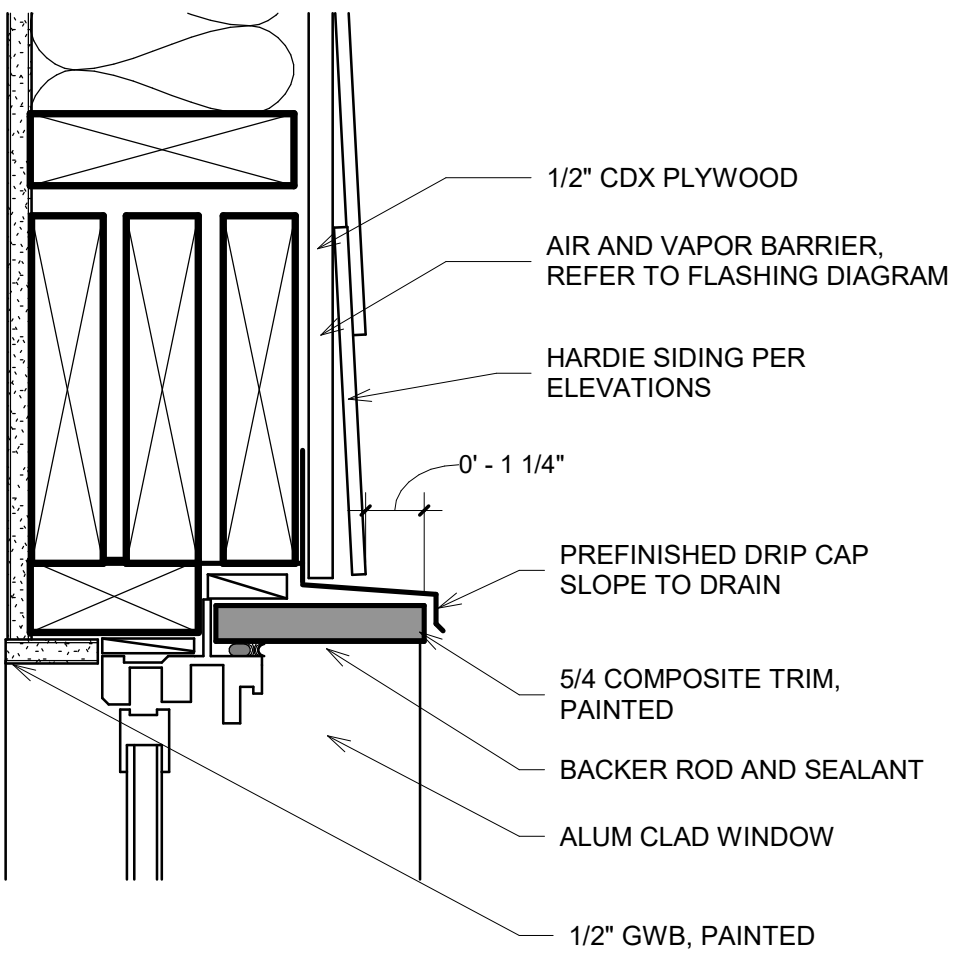
marais  
marais architects llc

ARCHITECT:  
MARAIS ARCHITECTS, LLC  
jared@maraisdesignbuild.com

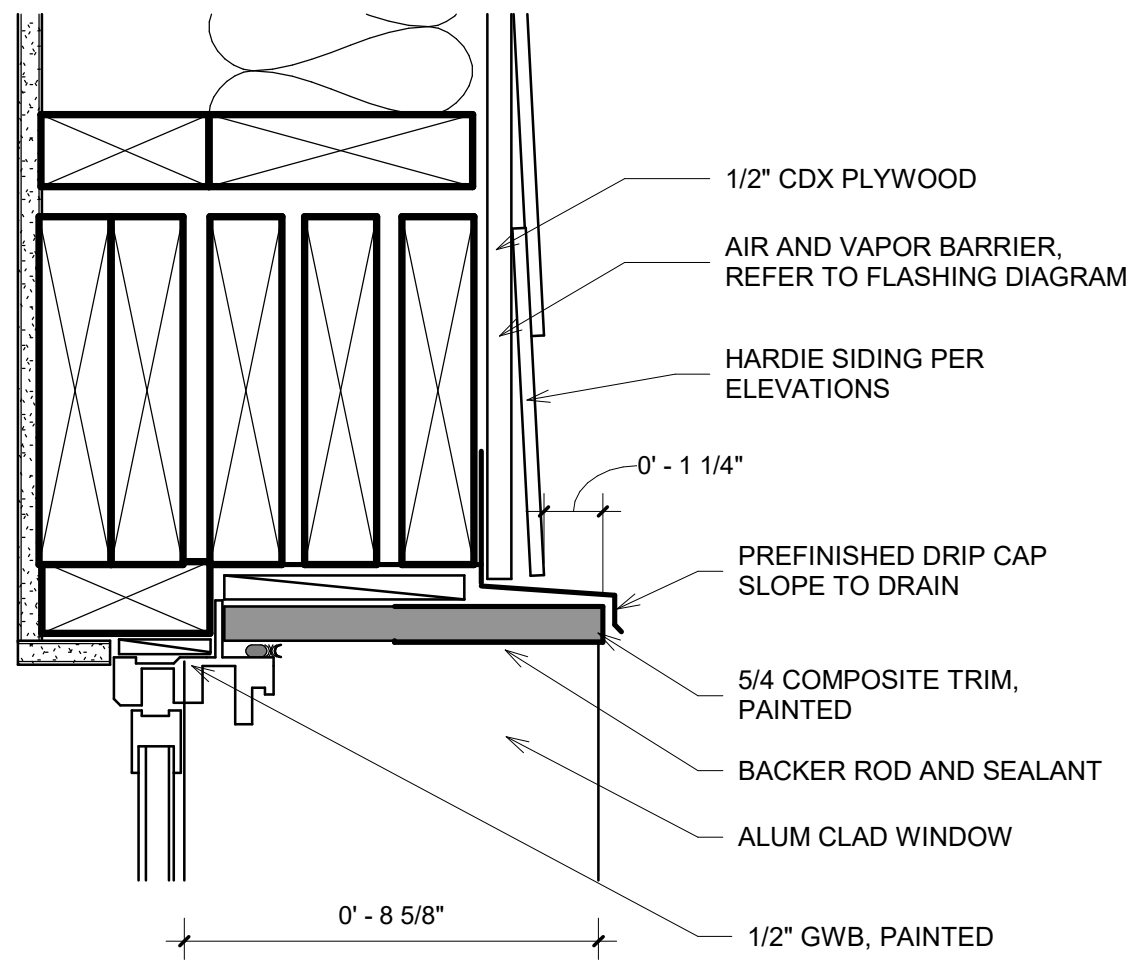
ISSUANCE:  
ARC REVIEW MAY  
05.17.22

SHEET TITLE:  
Floor Plans  
SHEET NUMBER:  
ARC-5

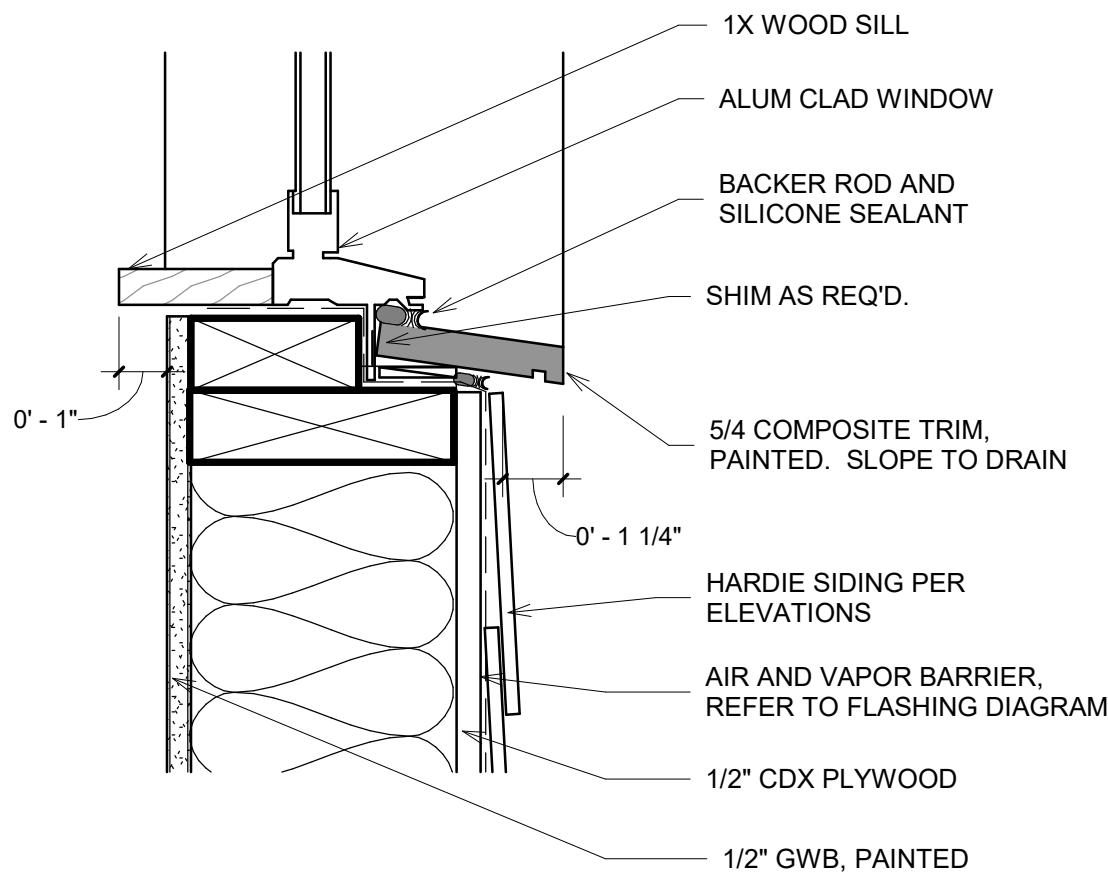
DATE: FOR PERMIT  
SCALE: 1/4" = 1'-0"



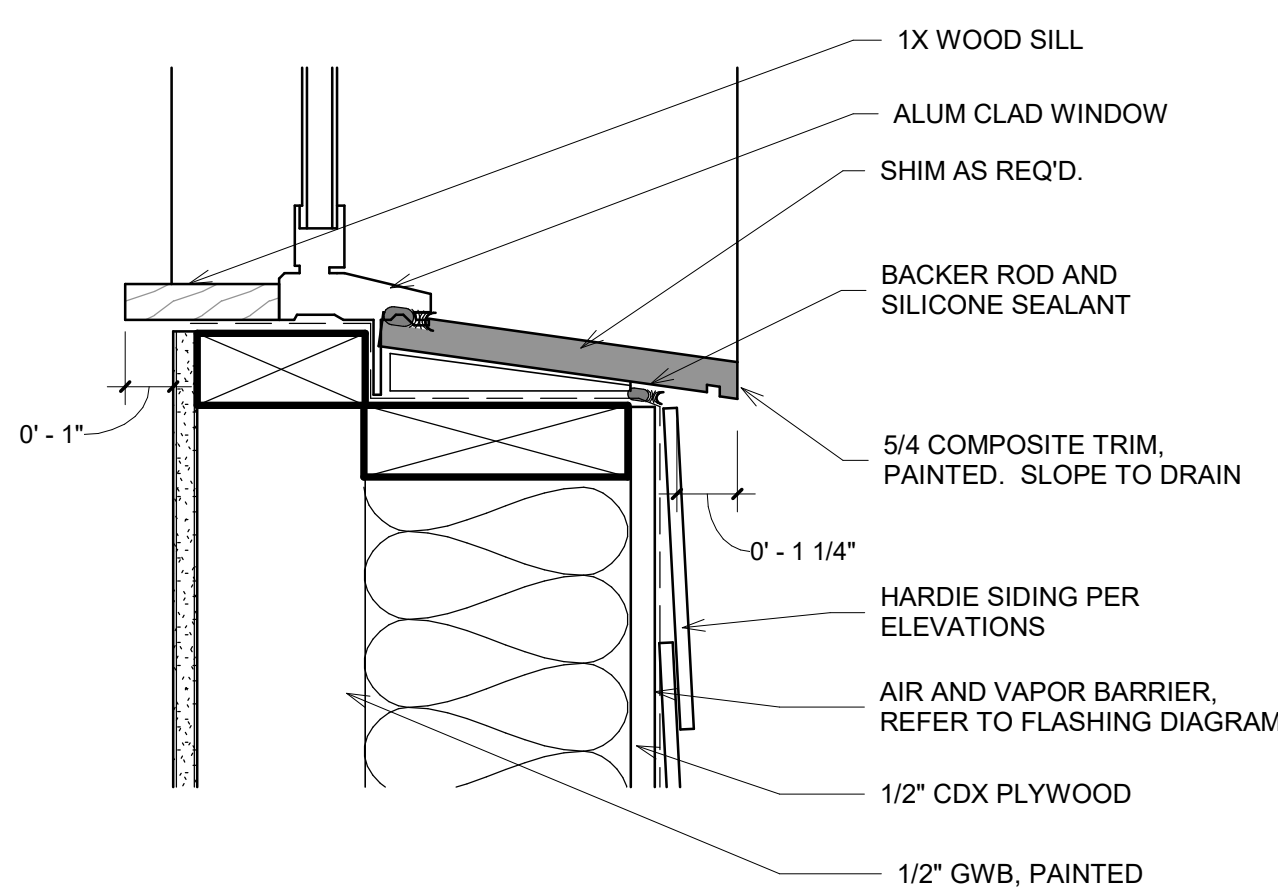
2 WINDOW DETAIL - HEAD  
3" = 1'-0"



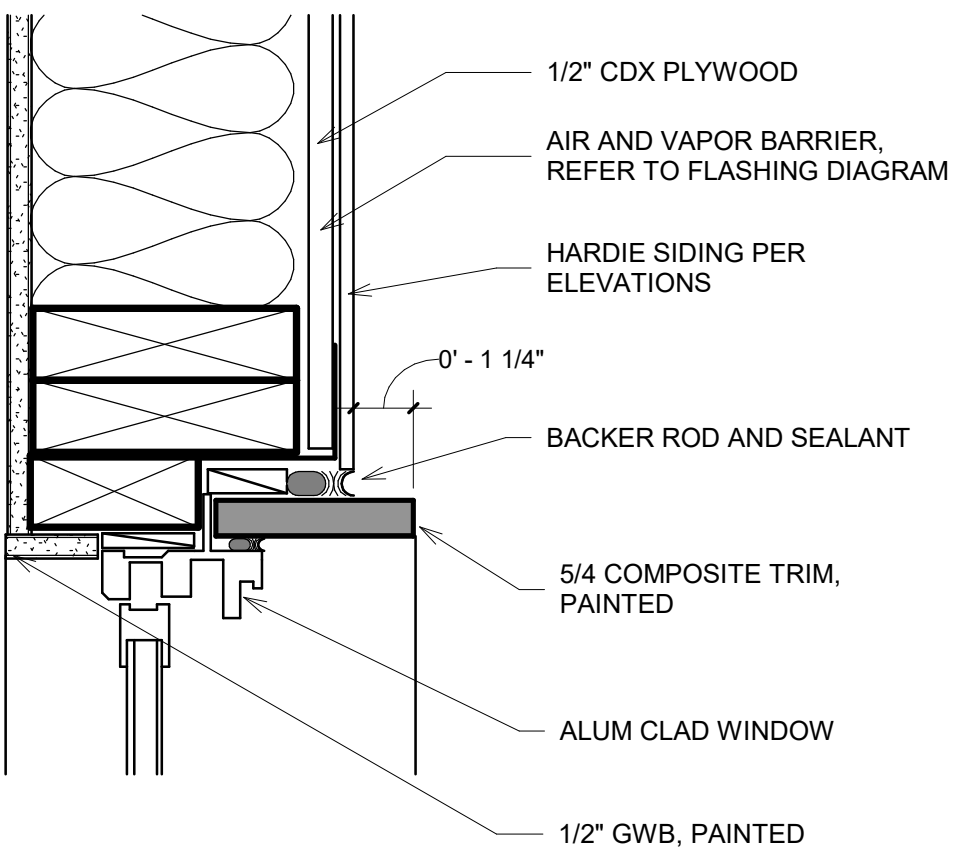
6 WINDOW DETAIL DEEP - HEAD  
3" = 1'-0"



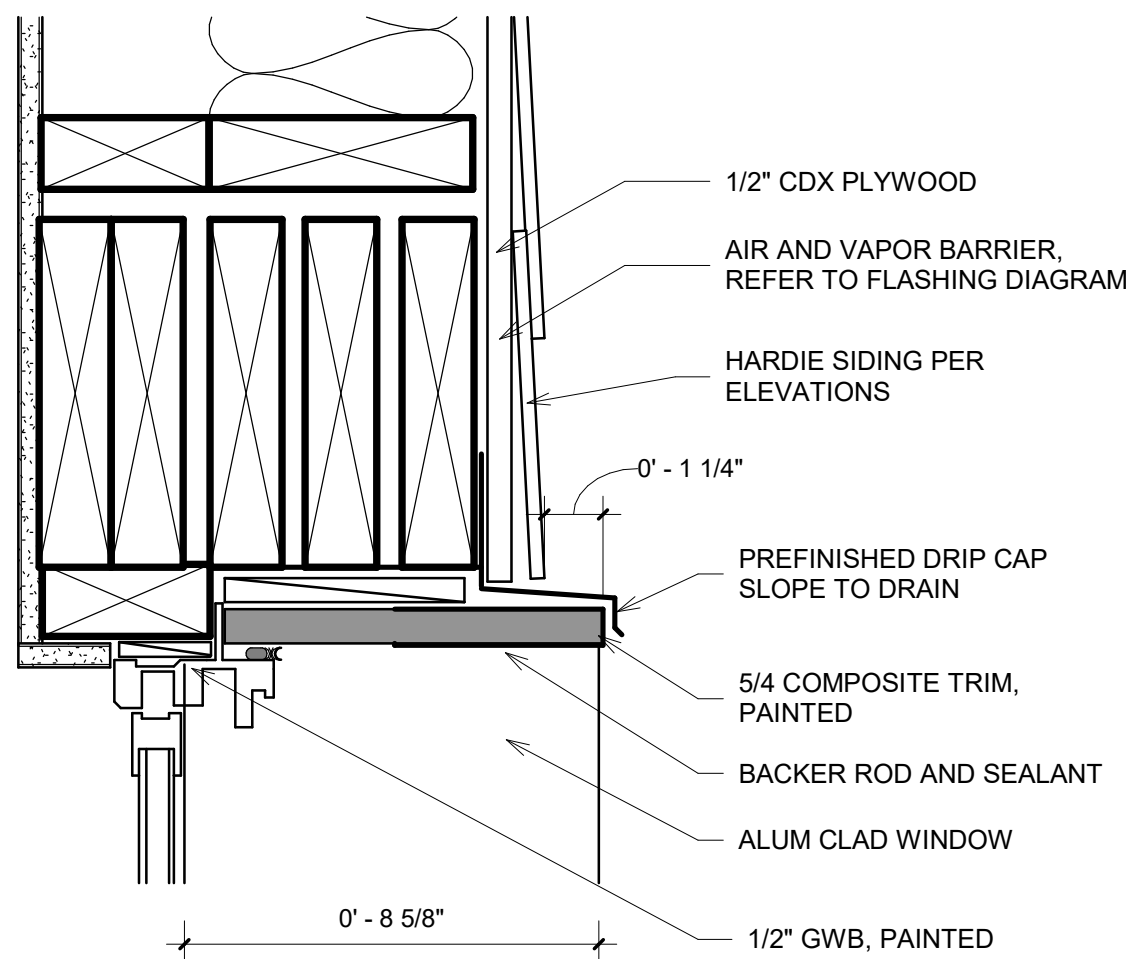
4 WINDOW DETAIL - SILL  
3" = 1'-0"



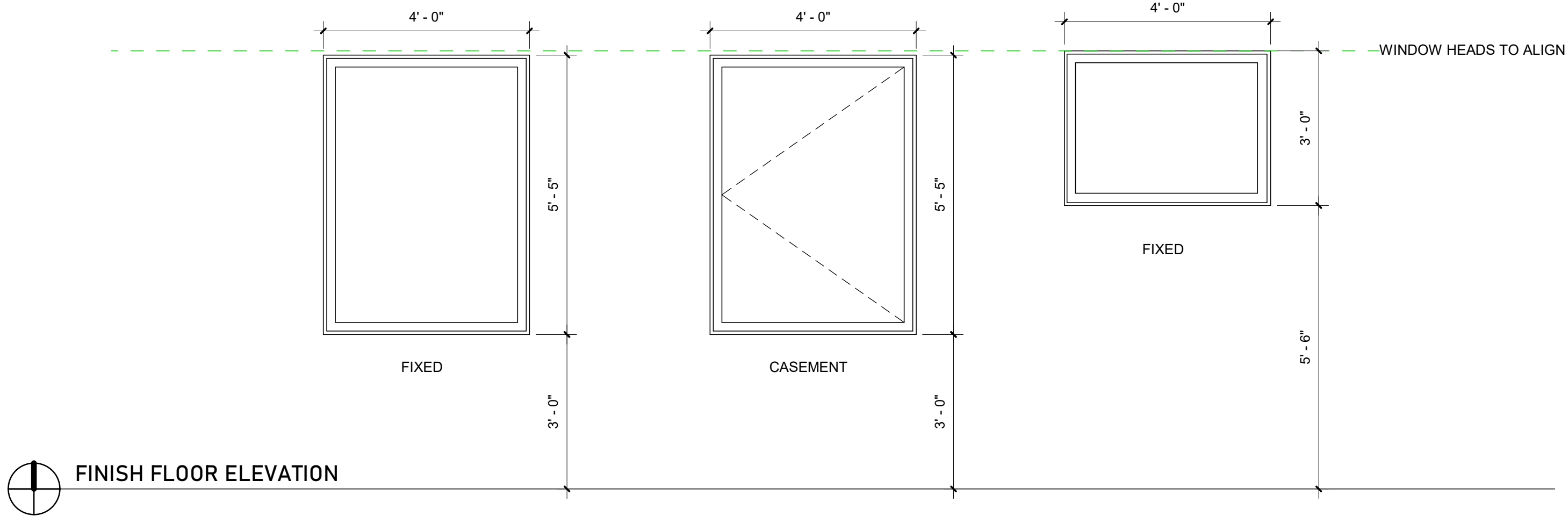
8 WINDOW DETAIL - SILL  
3" = 1'-0"



3 WINDOW DETAIL - JAMB  
3" = 1'-0"



7 WINDOW DETAIL DEEP - JAMB  
3" = 1'-0"

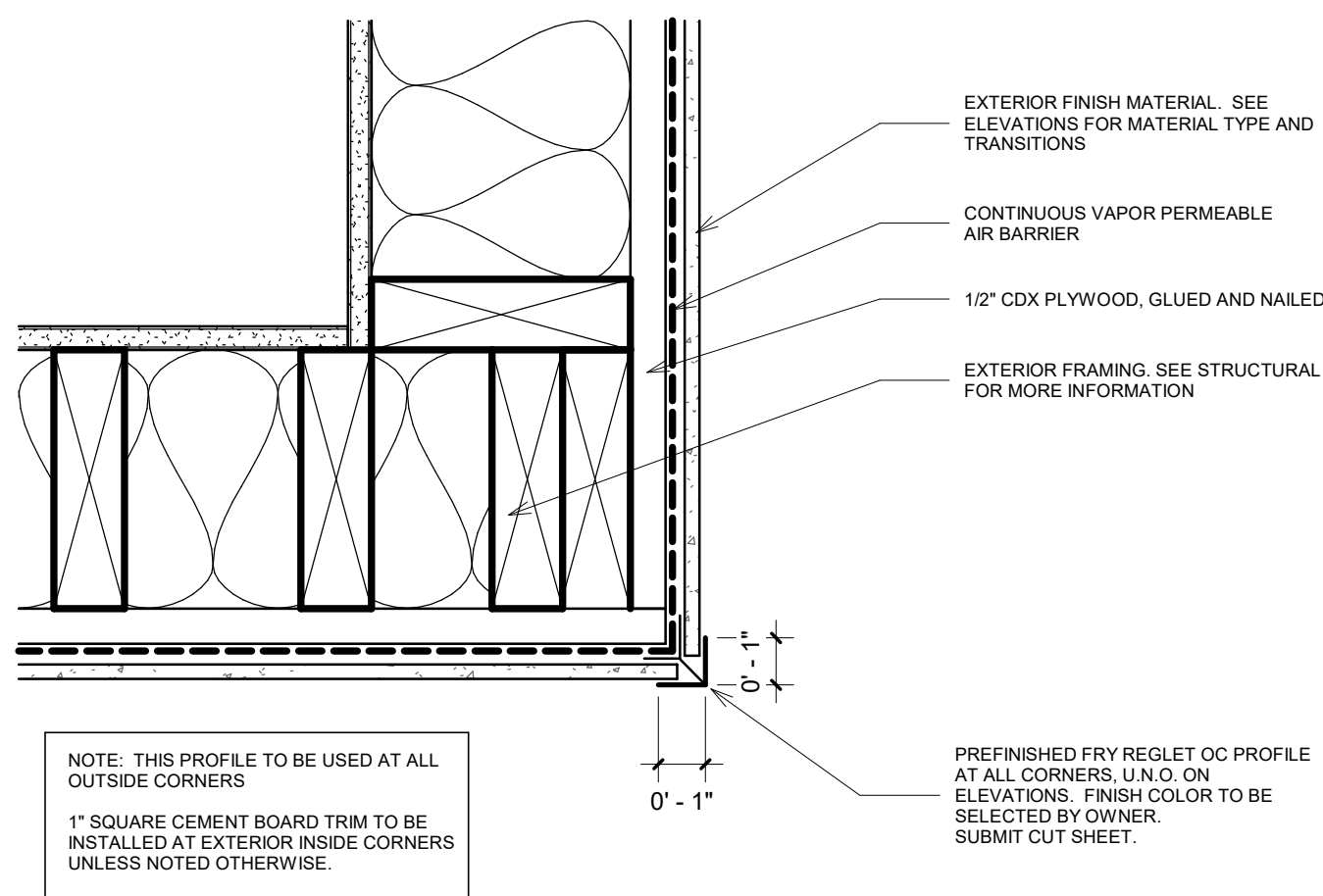


TYPE A  
QUANTITY : 6

TYPE B  
QUANTITY : 6

TYPE C  
QUANTITY : 1

1 Window Elevations - Urquhart  
1/2" = 1'-0" QUANTITIES TO BE VERIFIED BY GC



5 EXTERIOR CORNER TRIM  
3" = 1'-0"

# URQUHART HOUSE

3145 Urquhart St.  
New Orleans, LA, 70117

marais  
marais architects llc

ARCHITECT:  
MARAIS ARCHITECTS, LLC  
jared@maraisdesignbuild.com

ISSUANCE:  
ARC REVIEW MAY  
05.17.22

SHEET TITLE:  
Details

SHEET NUMBER:  
ARC-6

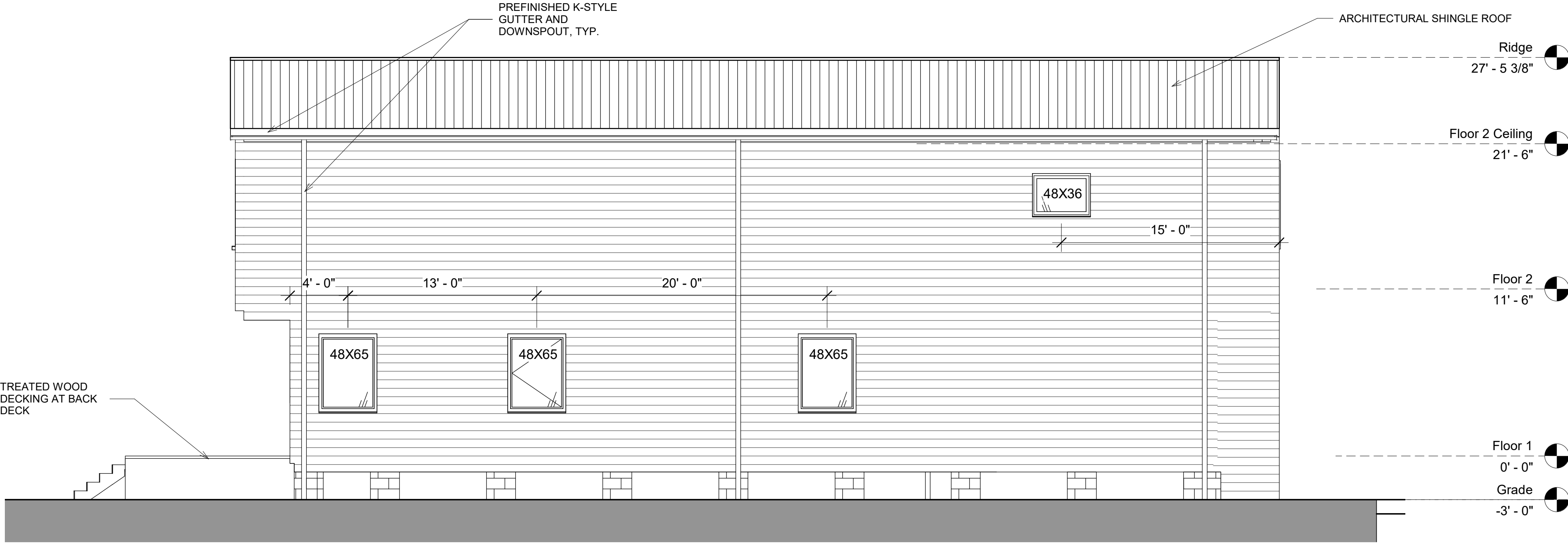
DATE: FOR PERMIT  
SCALE: As indicated

URQUHART  
HOUSE

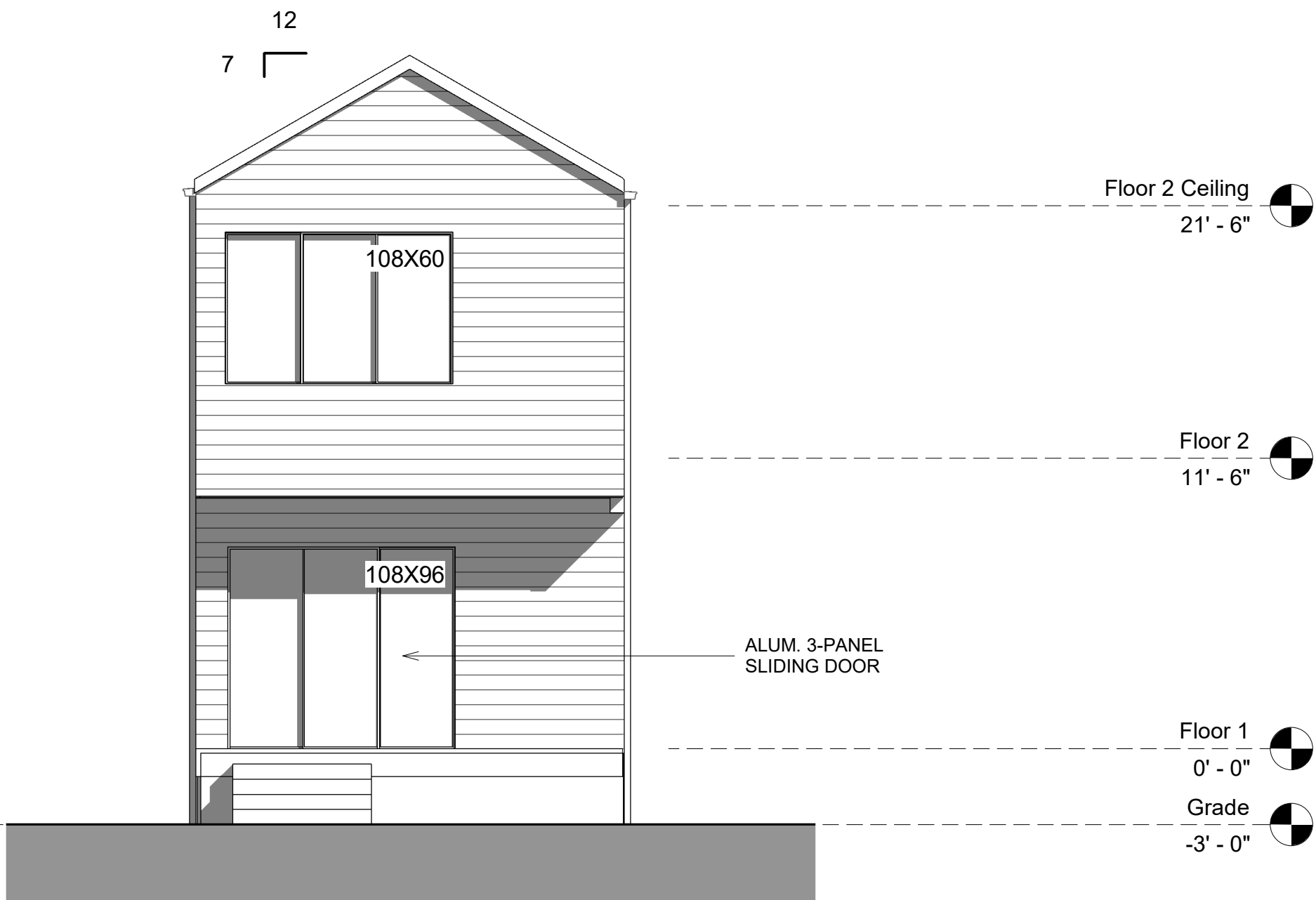
3145 Urquhart St.  
New Orleans, LA, 70117

marais  
marais architects llc

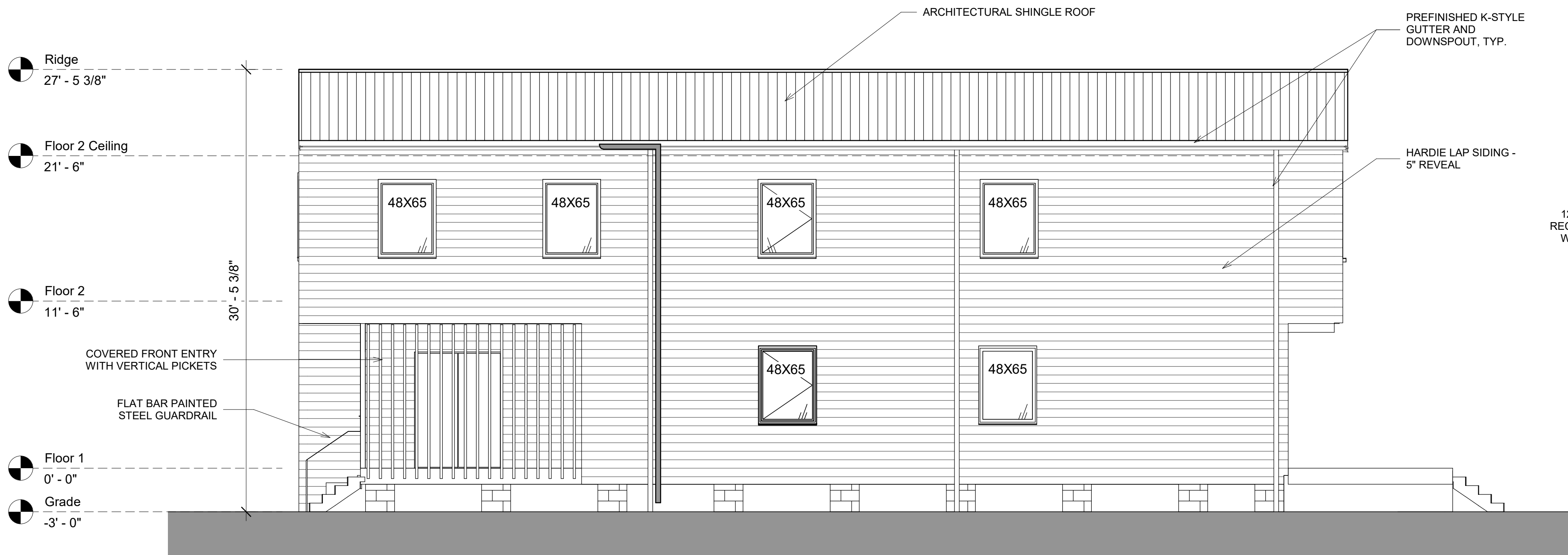
ARCHITECT:  
MARAIS ARCHITECTS, LLC  
jared@maraisdesignbuild.com



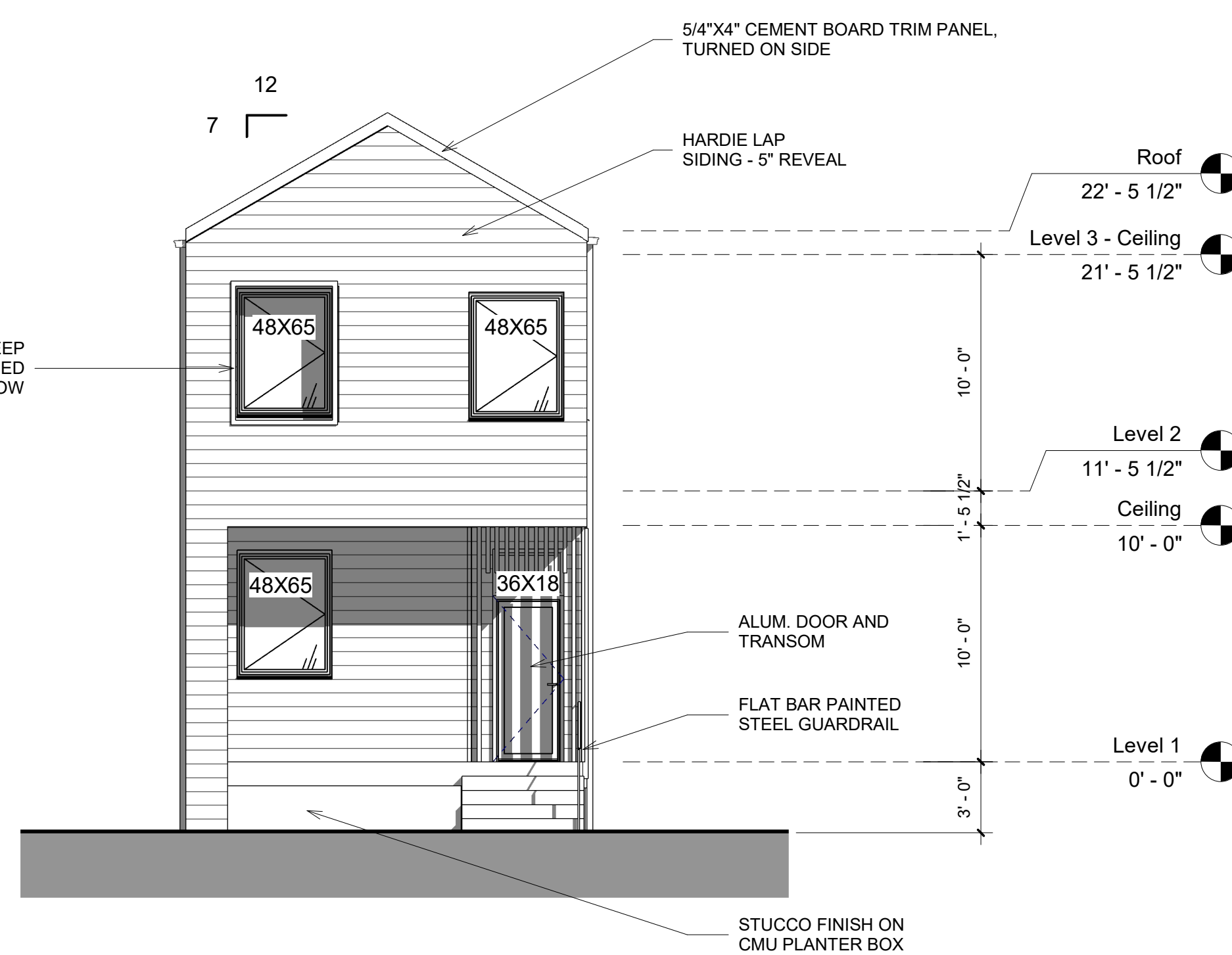
4 Urquhart - Left  
3/16" = 1'-0"



3 Urquhart - Back  
3/16" = 1'-0"



2 Urquhart - Right  
3/16" = 1'-0"



1 Urquhart - Front  
3/16" = 1'-0"

ISSUANCE:

ARC REVIEW MAY  
05.17.22

SHEET TITLE:

Elevations

SHEET NUMBER:

ARC-7

DATE: FOR PERMIT

SCALE: 3/16" = 1'-0"