

# Enphase IQ 7 and IQ 7+ Microinverters

The high-powered smart grid-ready **Enphase IQ 7 Micro™** and **Enphase IQ 7+ Micro™** dramatically simplify the installation process while achieving the highest system efficiency.

Part of the Enphase IQ System, the IQ 7 and IQ 7+ Microinverters integrate with the Enphase IQ Envoy™, Enphase IQ Battery™, and the Enphase Enlighten™ monitoring and analysis software.

IQ Series Microinverters extend the reliability standards set forth by previous generations and undergo over a million hours of power-on testing, enabling Enphase to provide an industry-leading warranty of up to 25 years.



### Easy to Install

- Lightweight and simple
- Faster installation with improved, lighter two-wire cabling
- Built-in rapid shutdown compliant (NEC 2014 & 2017)

### Productive and Reliable

- Optimized for high powered 60-cell and 72-cell\* modules
- More than a million hours of testing
- Class II double-insulated enclosure
- UL listed

### Smart Grid Ready

- Complies with advanced grid support, voltage and frequency ride-through requirements
- Remotely updates to respond to changing grid requirements
- Configurable for varying grid profiles
- Meets CA Rule 21 (UL 1741-SA)

\* The IQ 7+ Micro is required to support 72-cell modules.



To learn more about Enphase offerings, visit [enphase.com](https://enphase.com)



## Enphase IQ 7 and IQ 7+ Microinverters

INPUT DATA (DC)		IQ7-60-2-US		IQ7PLUS-72-2-US	
Commonly used module pairings <sup>1</sup>		235 W - 350 W +		235 W - 440 W +	
Module compatibility		60-cell PV modules only		60-cell and 72-cell PV modules	
Maximum input DC voltage		48 V		60 V	
Peak power tracking voltage		27 V - 37 V		27 V - 45 V	
Operating range		16 V - 48 V		16 V - 60 V	
Min/Max start voltage		22 V / 48 V		22 V / 60 V	
Max DC short circuit current (module Isc)		15 A		15 A	
Overvoltage class DC port		II		II	
DC port backfeed current		0 A		0 A	
PV array configuration		1 x 1 ungrounded array; No additional DC side protection required; AC side protection requires max 20A per branch circuit			
OUTPUT DATA (AC)		IQ 7 Microinverter		IQ 7+ Microinverter	
Peak output power		250 VA		295 VA	
Maximum continuous output power		240 VA		290 VA	
Nominal (L-L) voltage/range <sup>2</sup>		240 V / 211-264 V	208 V / 183-229 V	240 V / 211-264 V	208 V / 183-229 V
Maximum continuous output current		1.0 A (240 V)	1.15 A (208 V)	1.21 A (240 V)	1.39 A (208 V)
Nominal frequency		60 Hz		60 Hz	
Extended frequency range		47 - 68 Hz		47 - 68 Hz	
AC short circuit fault current over 3 cycles		5.8 Arms		5.8 Arms	
Maximum units per 20 A (L-L) branch circuit <sup>3</sup>		16 (240 VAC)	13 (208 VAC)	13 (240 VAC)	11 (208 VAC)
Overvoltage class AC port		III		III	
AC port backfeed current		0 A		0 A	
Power factor setting		1.0		1.0	
Power factor (adjustable)		0.85 leading ... 0.85 lagging		0.85 leading ... 0.85 lagging	
EFFICIENCY		@240 V	@208 V	@240 V	@208 V
Peak efficiency		97.6 %	97.6 %	97.5 %	97.3 %
CEC weighted efficiency		97.0 %	97.0 %	97.0 %	97.0 %
MECHANICAL DATA					
Ambient temperature range		-40°C to +65°C			
Relative humidity range		4% to 100% (condensing)			
Connector type (IQ7-60-2-US & IQ7PLUS-72-2-US)		MC4 (or Amphenol H4 UTX with additional Q-DCC-5 adapter)			
Dimensions (WxHxD)		212 mm x 175 mm x 30.2 mm (without bracket)			
Weight		1.08 kg (2.38 lbs)			
Cooling		Natural convection - No fans			
Approved for wet locations		Yes			
Pollution degree		PD3			
Enclosure		Class II double-insulated, corrosion resistant polymeric enclosure			
Environmental category / UV exposure rating		NEMA Type 6 / outdoor			
FEATURES					
Communication		Power Line Communication (PLC)			
Monitoring		Enlighten Manager and MyEnlighten monitoring options. Both options require installation of an Enphase IQ Envoy.			
Disconnecting means		The AC and DC connectors have been evaluated and approved by UL for use as the load-break disconnect required by NEC 690.			
Compliance		CA Rule 21 (UL 1741-SA) UL 62109-1, UL1741/IEEE1547, FCC Part 15 Class B, ICES-0003 Class B, CAN/CSA-C22.2 NO. 107.1-01 This product is UL Listed as PV Rapid Shut Down Equipment and conforms with NEC-2014 and NEC-2017 section 690.12 and C22.1-2015 Rule 64-218 Rapid Shutdown of PV Systems, for AC and DC conductors, when installed according manufacturer's instructions.			

1. No enforced DC/AC ratio. See the compatibility calculator at <https://enphase.com/en-us/support/module-compatibility>.  
2. Nominal voltage range can be extended beyond nominal if required by the utility.  
3. Limits may vary. Refer to local requirements to define the number of microinverters per branch in your area.

To learn more about Enphase offerings, visit [enphase.com](https://enphase.com)

© 2019 Enphase Energy. All rights reserved. All trademarks or brands used are the property of Enphase Energy, Inc.  
2019-3-26



# Customer DETAILS

Brenda Hayes

4818 WARRINGTON DRIVE,  
NEW ORLEANS, LA, USA

# SYSTEM DETAILS

System Size:  
**8.28 kW**  
Modules:  
23 APTOS DNA-120-MF26-360W  
Inverter(s):  
23 ENPHASE: IQ7 (240V)  
Other:  
1 ENPHASE IQ COMBINER 3 W/INTEGRATED ENVOY MONITORING  
1 ENPHASE: ENPOWER SMART SWITCH  
1 ENPHASE: ENCHARGE 10KW BATTERY  
-----



# INVERTER SPECS



ABDUR RAHMAN  
PV-042118-020-489

*Abdur Rahman*

DRAWN BY  
Duna Jenkins 5/2/22

SCALE: NTS

Q-2



## Flush Mount System

Datasheet



### Built for solar's toughest roofs.

IronRidge builds the strongest mounting system for pitched roofs in solar. Every component has been tested to the limit and proven in extreme environments.

Our rigorous approach has led to unique structural features, such as curved rails and reinforced flashings, and is also why our products are fully certified, code compliant and backed by a 20-year warranty.



#### Strength Tested

All components evaluated for superior structural performance.



#### Class A Fire Rating

Certified to maintain the fire resistance rating of the existing roof.



#### UL 2703 Listed System

Entire system and components meet newest effective UL 2703 standard.



#### PE Certified

Pre-stamped engineering letters available in most states.



#### Design Assistant

Online software makes it simple to create, share, and price projects.



#### 25-Year Warranty

Products guaranteed to be free of impairing defects.

### XR Rails ☺

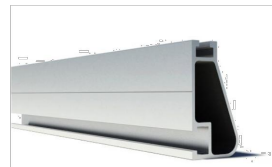
#### XR10 Rail



A low-profile mounting rail for regions with light snow.

- 6' spanning capability
- Moderate load capability
- Clear and black finish

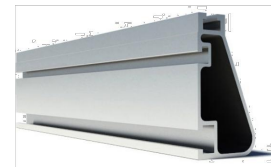
#### XR100 Rail



The ultimate residential solar mounting rail.

- 8' spanning capability
- Heavy load capability
- Clear and black finish

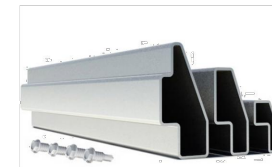
#### XR1000 Rail



A heavyweight mounting rail for commercial projects.

- 12' spanning capability
- Extreme load capability
- Clear anodized finish

#### Bonded Splices



All rails use internal splices for seamless connections.

- Self-drilling screws
- Varying versions for rails
- Forms secure bonding

### Clamps & Grounding ☺

#### UFOs



Universal Fastening Objects bond modules to rails.

- Fully assembled & lubed
- Single, universal size
- Clear and black finish

#### Stopper Sleeves



Snap onto the UFO to turn into a bonded end clamp.

- Bonds modules to rails
- Sized to match modules
- Clear and black finish

#### CAMO



Bond modules to rails while staying completely hidden.

- Universal end-cam clamp
- Tool-less installation
- Fully assembled

#### Grounding Lugs



Connect arrays to equipment ground.

- Low profile
- Single tool installation
- Mounts in any direction

### Attachments ☺

#### FlashFoot2



Flash and mount XR Rails with superior waterproofing.

- Twist-on Cap eases install
- Wind-driven rain tested
- Mill and black finish

#### Conduit Mount



Flash and mount conduit, strut, or junction boxes.

- Twist-on Cap eases install
- Wind-driven rain tested
- Secures 3/4" or 1" conduit

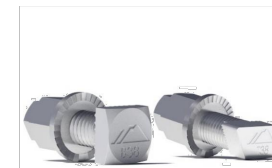
#### Slotted L-Feet



Drop-in design for rapid rail attachment.

- Secure rail connections
- Slot for vertical adjusting
- Clear and black finish

#### Bonding Hardware



Bond and attach XR Rails to roof attachments.

- T & Square Bolt options
- Nut uses 7/16" socket
- Assembled and lubricated

### Resources



#### Design Assistant

Go from rough layout to fully engineered system. For free.

[Go to IronRidge.com/design](https://www.ironridge.com/design)



#### NABCEP Certified Training

Earn free continuing education credits, while learning more about our systems.

[Go to IronRidge.com/training](https://www.ironridge.com/training)

© 2018 IronRidge, Inc. All rights reserved. U.S. Patents: #8,695,290; #9,819,303; #9,865,938; Others Pending. Version 1.60

## Customer DETAILS

Brenda Hayes

4818 WARRINGTON DRIVE,  
NEW ORLEANS, LA, USA

## SYSTEM DETAILS

System Size:

8.28 kW

Modules:

23 APTOS DNA-120-MF26-360W

Inverter(s):

23 ENPHASE: IQ7 (240V)

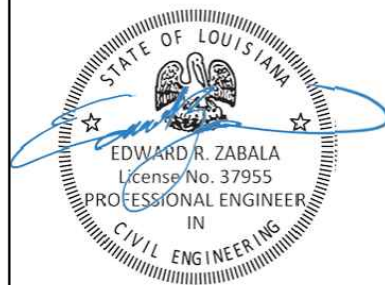
Other:

1 ENPHASE IQ COMBINER 3 W/INTEGRATED

ENVOY MONITORING

1 ENPHASE: ENPOWER SMART SWITCH

1 ENPHASE: ENCHARGE 10KW BATTERY



## RACKING SPECS



ABDUR RAHMAN

PV-042118-020-489

*Signature*

#### DRAWN BY

Duna Jenkins

5/2/22

SCALE: NTS

Q-4



FLASH LOC

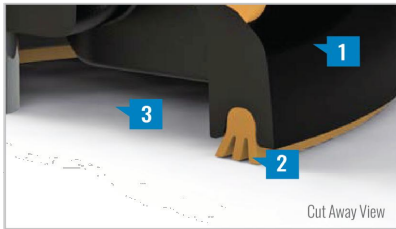


FLASHLOC is the ultimate attachment for composition shingle and rolled comp roofs. The all-in-one mount installs fast — no kneeling on hot roofs to install flashing, no prying or cutting shingles, no pulling nails. Simply drive the lag bolt and inject sealant into the base. FLASHLOC’s patented TRIPLE SEAL technology preserves the roof and protects the penetration with a permanent pressure seal. Kitted with lag bolts, sealant, and hardware for maximum convenience. Don’t just divert water, **LOC it out!**



PROTECT THE ROOF

Install a high-strength waterproof attachment without lifting, prying or damaging shingles.



LOC OUT WATER

With an outer shield **1** contour-conforming gasket **2** and pressurized sealant chamber **3** the Triple-Loc Seal delivers a 100% waterproof connection.



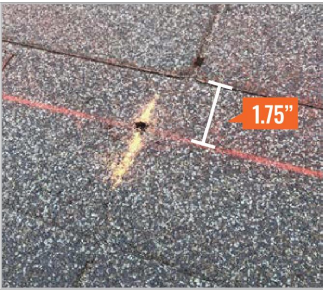
HIGH-SPEED INSTALL

Simply drive lag bolt and inject sealant into the port **4** to create a permanent pressure seal.

FASTER INSTALLATION. 25-YEAR WARRANTY.

FOR QUESTIONS OR CUSTOMER SERVICE VISIT UNIRAC.COM OR CALL (505) 248-2702

FLASH LOC  
INSTALLATION GUIDE



PRE-INSTALL

Snap chalk lines for attachment rows. On shingle roofs, snap lines 1-3/4” below upslope edge of shingle course. Locate rafters and mark attachment locations.

At each location, drill a 7/32” pilot hole. Clean roof surface of dirt, debris, snow, and ice, then fill pilot hole with sealant.

**NOTE:** Space mounts per racking system install specifications. When down pressure is ≥34 psf, span may not exceed 2 ft.



STEP 1: SECURE

Place FLASHLOC over pilot hole with lag on down-slope side. Align indicator marks on sides of mount with chalk line. Pass included lag bolt and sealing washer through FLASHLOC into pilot hole. Drive lag bolt until mount is held firmly in place.

**NOTE:** The EPDM in the sealing washer will expand beyond the edge of the metal washer when proper torque is applied.



STEP 2: SEAL

Insert tip of UNIRAC provided sealant into port. Inject until sealant exits both vents.

Continue array installation, attaching rails to mounts with provided T-bolts.

**NOTE:** When FLASHLOC is installed over gap between shingle or tabs or vertical joints, fill gap/joint with sealant between mount and upslope edge of shingle course.

Use only provided sealant.

FASTER INSTALLATION. 25-YEAR WARRANTY.

FOR QUESTIONS OR CUSTOMER SERVICE VISIT UNIRAC.COM OR CALL (505) 248-2702

Customer  
DETAILS

Brenda Hayes  
4818 WARRINGTON DRIVE,  
NEW ORLEANS, LA, USA

SYSTEM  
DETAILS

System Size:  
8.28 kW  
Modules:  
23 APTOS DNA-120-MF26-360W  
Inverter(s):  
23 ENPHASE: IQ7 (240V)  
Other:  
1 ENPHASE IQ COMBINER 3 W/INTEGRATED  
ENVOY MONITORING  
1 ENPHASE: ENPOWER SMART SWITCH  
1 ENPHASE: ENCHARGE 10KW BATTERY



RACKING  
SPECS

NABCEP  
CERTIFIED  
PV Installation  
Professional  
ABDUR RAHMAN  
PV-042118-020-489

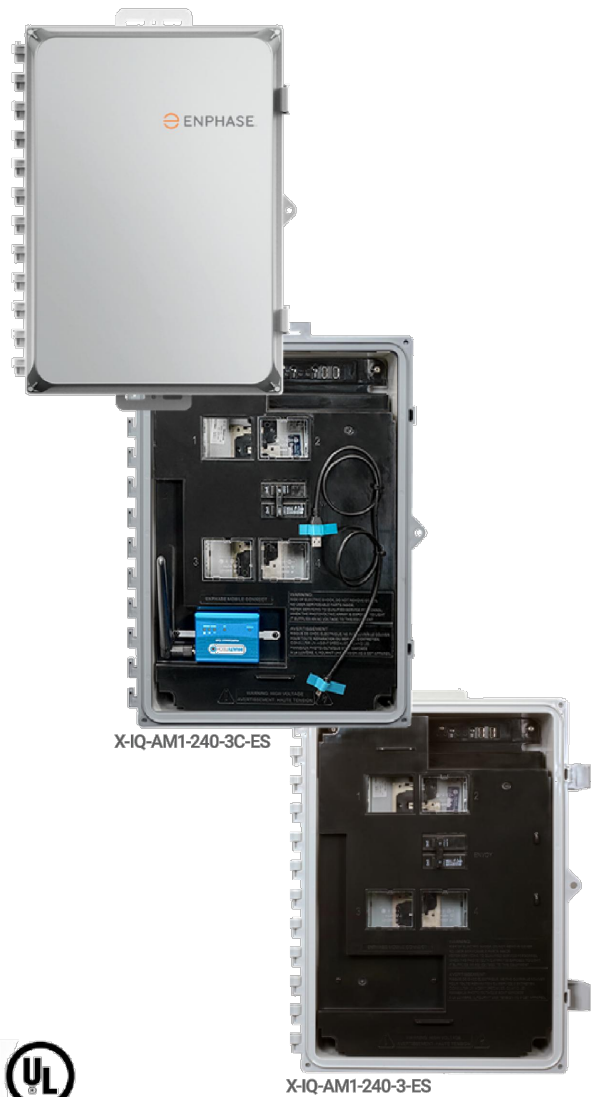
DRAWN BY  
Duna Jenkins 5/2/22

SCALE: NTS  
Q-5



# Enphase IQ Combiner 3-ES/3C-ES

X-IQ-AM1-240-3-ES  
X-IQ-AM1-240-3C-ES



To learn more about Enphase offerings, visit [enphase.com](https://enphase.com)



The **Enphase IQ Combiner 3-ES/3C-ES™** with Enphase IQ Envoy™ and integrated LTE-M1 cell modem (included only with IQ Combiner 3C-ES) consolidates interconnection equipment into a single enclosure and streamlines PV and storage installations by providing a consistent, pre-wired solution for residential applications. It offers up to four 2-pole input circuits and Eaton BR series busbar assembly.

### Smart

- Includes IQ Envoy for communication and control
- Includes LTE-M1 cell modem (included only with IQ Combiner 3C-ES)
- Includes solar shield to match Ensemble esthetics and deflect heat
- Flexible networking supports Wi-Fi, Ethernet, or cellular
- Optional AC receptacle available for PLC bridge
- Provides production metering and consumption monitoring

### Simple

- Reduced size from IQ Combiner+ (X-IQ-AM1-240-2)
- Centered mounting brackets support single stud mounting
- Supports back and side conduit entry
- Up to four 2-pole branch circuits for 240 VAC plug-in breakers (not included)
- 80 A total PV or storage branch circuits

### Reliable

- Durable NRTL-certified NEMA type 3R enclosure
- Five-year limited warranty
- Two years labor reimbursement program coverage included for both the Combiner SKU's
- UL listed

## Enphase IQ Combiner 3-ES / 3C-ES

MODEL NUMBER	
IQ Combiner 3-ES (X-IQ-AM1-240-3-ES)	IQ Combiner 3-ES with Enphase IQ Envoy printed circuit board for integrated revenue grade PV production metering (ANSI C12.20 +/- 0.5%) and consumption monitoring (+/- 2.5%). Includes a silver solar shield to match the Encharge storage system and Enpower smart switch and to deflect heat.
IQ Combiner 3C-ES (X-IQ-AM1-240-3C-ES)	IQ Combiner 3C-ES with Enphase IQ Envoy printed circuit board for integrated revenue grade PV production metering (ANSI C12.20 +/- 0.5%) and consumption monitoring (+/- 2.5%). Includes Enphase Mobile Connect LTE-M1 (CELLMODEM-M1), a plug-and-play industrial-grade cell modem for systems up to 60 microinverters. (Available in the US, Canada, Mexico, Puerto Rico, and the US Virgin Islands, where there is adequate cellular service in the installation area.) Includes a silver solar shield to match the Encharge storage system and Enpower smart switch and to deflect heat.
ACCESSORIES and REPLACEMENT PARTS (not included, order separately)	
Ensemble Communications Kit (COMMS-CELLMODEM-M1)	Includes COMMS-KIT-01 and CELLMODEM-M1 with 5-year data plan for Ensemble sites
Circuit Breakers BRK-10A-2-240 BRK-15A-2-240 BRK-20A-2P-240	Supports Eaton BR210, BR215, BR220, BR230, BR240, BR250, and BR260 circuit breakers. Circuit breaker, 2 pole, 10A, Eaton BR210 Circuit breaker, 2 pole, 15A, Eaton BR215 Circuit breaker, 2 pole, 20A, Eaton BR220
EPLC-01	Power line carrier (communication bridge pair), quantity - one pair
XA-SOLARSHIELD-ES	Replacement solar shield for Combiner 3-ES / 3C-ES
XA-PLUG-120-3	Accessory receptacle for Power Line Carrier in IQ Combiner 3-ES / 3C-ES (required for EPLC-01)
XA-ENV-PCBA-3	Replacement IQ Envoy printed circuit board (PCB) for Combiner 3-ES / 3C-ES
ELECTRICAL SPECIFICATIONS	
Rating	Continuous duty
System voltage	120/240 VAC, 60 Hz
Eaton BR series busbar rating	125 A
Max. continuous current rating	65 A
Max. continuous current rating (input from PV/storage)	64 A
Max. fuse/circuit rating (output)	90 A
Branch circuits (solar and/or storage)	Up to four 2-pole Eaton BR series Distributed Generation (DG) breakers only (not included)
Max. total branch circuit breaker rating (input)	80A of distributed generation / 95A with IQ Envoy breaker included
Envoy breaker	10A or 15A rating GE/Siemens/Eaton included
Production metering CT	200 A solid core pre-installed and wired to IQ Envoy
Consumption monitoring CT (CT-200-SPLIT)	A pair of 200 A split core current transformers
MECHANICAL DATA	
Dimensions (WxHxD)	37.5 x 49.5 x 16.8 cm (14.75" x 19.5" x 6.63"). Height is 21.06" (53.5 cm) with mounting brackets.
Weight	7.5 kg (16.5 lbs)
Ambient temperature range	-40° C to +46° C (-40° to 115° F)
Cooling	Natural convection, plus heat shield
Enclosure environmental rating	Outdoor, NRTL-certified, NEMA type 3R, polycarbonate construction
Wire sizes	• 20 A to 50 A breaker inputs: 14 to 4 AWG copper conductors • 60 A breaker branch input: 4 to 1/0 AWG copper conductors • Main lug combined output: 10 to 2/0 AWG copper conductors • Neutral and ground: 14 to 1/0 copper conductors Always follow local code requirements for conductor sizing.
Altitude	To 2000 meters (6,560 feet)
INTERNET CONNECTION OPTIONS	
Integrated Wi-Fi	802.11b/g/n
Cellular	CELLMODEM-M1-06 4G based LTE-M1 cellular modem (included only with IQ Combiner 3C-ES). Note that an Enphase Mobile Connect cellular modem is required for all Ensemble installations.
Ethernet	Optional, 802.3, Cat5E (or Cat 6) UTP Ethernet cable (not included)
COMPLIANCE	
Compliance, Combiner	UL 1741, CAN/CSA C22.2 No. 107.1, 47 CFR, Part 15, Class B, ICES 003 Production metering: ANSI C12.20 accuracy class 0.5 (PV production) Consumption metering: accuracy class 2.5
Compliance, IQ Envoy	UL 60601-1/CANCSA 22.2 No. 61010-1

To learn more about Enphase offerings, visit [enphase.com](https://enphase.com)

© 2021 Enphase Energy. All rights reserved. Enphase, the Enphase logo, IQ Combiner 3C-ES, and other trademarks or service names are trademarks of Enphase Energy, Inc. Data subject to change. 2021-05-26



## Customer DETAILS

Brenda Hayes

4818 WARRINGTON DRIVE,  
NEW ORLEANS, LA, USA

## SYSTEM DETAILS

System Size:

**8.28 kW**

Modules:

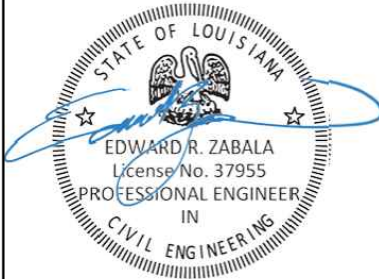
23 APTOS DNA-120-MF26-360W

Inverter(s):

23 ENPHASE: IQ7 (240V)

Other:

1 ENPHASE IQ COMBINER 3 W/INTEGRATED  
ENVOY MONITORING  
1 ENPHASE: ENPOWER SMART SWITCH  
1 ENPHASE: ENCHARGE 10KW BATTERY  
-----



## ELECTRICAL SPECS



ABDUR RAHMAN  
PV-042118-020-489

*Abdur Rahman*

DRAWN BY

Duna Jenkins

5/2/22

SCALE: NTS

Q-6



# Enphase Enpower

The **Enphase Enpower™** smart switch connects the home to grid power, the Encharge storage system, and solar PV. It provides microgrid interconnection device (MID) functionality by automatically detecting and seamlessly transitioning the home energy system from grid power to backup power in the event of a grid failure. It consolidates interconnection equipment into a single enclosure and streamlines grid independent capabilities of PV and storage installations by providing a consistent, pre-wired solution for residential applications.



### Reliable

- Durable NEMA type 3R enclosure
- Ten-year limited warranty

### Smart

- Controls safe connectivity to the grid
- Automatically detects grid outages
- Provides seamless transition to backup

### Simple

- Connects to the load or service equipment¹ side of the main load panel
- Centered mounting brackets support single stud mounting
- Supports conduit entry from the bottom, bottom left side, and bottom right side
- Supports whole home and partial home backup and subpanel backup
- Up to 200A main breaker support
- Includes neutral-forming transformer for split phase 120/240V backup operation

1. Enpower is not suitable for use as service equipment in Canada.

To learn more about Enphase offerings, visit [enphase.com](https://enphase.com)



## Enphase Enpower

MODEL NUMBER		
EP200G101-M240US00	Enphase Enpower smart switch with neutral-forming transformer (NFT), Microgrid Interconnect Device (MID), breakers, and screws. Streamlines grid-independent capabilities of PV and storage installations.	
ACCESSORIES and REPLACEMENT PARTS		
XA-E3-PCBA-ENS	Replacement Enpower controller printed circuit board	
EP200G-NA-HD-200A	Eaton type BR circuit breaker hold-down screw kit, BRHDK125	
EP200G-HNDL-R1	Enpower installation handle kit (order separately)	
Circuit breakers (as needed) <sup>2, 3</sup>	Not included, must order separately:	
BRK-100A-2P-240V	• Main breaker, 2 pole, 100A, 25kAIC, CSR2100	
BRK-125A-2P-240V	• Main breaker, 2 pole, 125A, 25kAIC, CSR2125N	
BRK-150A-2P-240V	• Main breaker, 2 pole, 150A, 25kAIC, CSR2150N	
BRK-175A-2P-240V	• Main breaker, 2 pole, 175A, 25kAIC, CSR2175N	
BRK-200A-2P-240V	• Main breaker, 2 pole, 200A, 25kAIC, CSR2200N	
BRK-20A-2P-240V-B	• Circuit breaker, 2 pole, 20A, 10kAIC, BR220B	
BRK-30A-2P-240V	• Circuit breaker, 2 pole, 30A, 10kAIC, BR230B	
BRK-40A-2P-240V	• Circuit breaker, 2 pole, 40A, 10kAIC, BR240B	
BRK-60A-2P-240V	• Circuit breaker, 2 pole, 60A, 10kAIC, BR260	
BRK-80A-2P-240V	• Circuit breaker, 2 pole, 80A, 10kAIC, BR280	
ELECTRICAL SPECIFICATIONS		
Assembly rating	Continuous operation at 100% of its rating	
Nominal voltage / range (L-L)	240 VAC / 100 - 310 VAC	
Voltage measurement accuracy	±1% V nominal (±1.2V L-N and ±2.4V L-L)	
Auxiliary contact for load control and excess PV control	24V, 1A	
Nominal frequency / range	60 Hz / 56 - 63 Hz	
Frequency measurement accuracy	±0.1 Hz	
Maximum continuous current rating	160A	
Maximum input overcurrent protection device	200A	
Maximum output overcurrent protection device	200A	
Maximum overcurrent protection device rating for storage branch circuit <sup>4</sup>	80A	
Maximum overcurrent protection device rating for PV combiner branch circuit <sup>4</sup>	80A	
Neutral Forming Transformer (NFT)	• Breaker rating (pre-installed): 40A between L1 and Neutral; 40A between L2 and Neutral • Continuous rated power: 3600VA • Maximum continuous unbalance current: 30A @ 120V • Peak rated power: 8800VA for 30 seconds • Peak unbalanced current: 80A @ 120V for 30 seconds	
MECHANICAL DATA		
Dimensions (WxHxD)	50cm x 91.6cm x 24.6cm (19.7 in x 36 in x 9.7 in)	
Weight	38.5 kg (85 lbs)	
Ambient temperature range	-40° C to +50° C (-40° F to 122° F)	
Cooling	Natural convection, plus heat shield	
Enclosure environmental rating	Outdoor, NEMA type 3R, polycarbonate construction	
Altitude	To 2500 meters (8200 feet)	
WIRE SIZES		
Connections (All lugs are rated to 90C)	• Main lugs and backup load lugs • CSR breakers • BR breakers (wire provided) • AC combiner lugs, Encharge lugs, and generator lugs • Neutral (large lugs)	Cu/Al: 1 AWG – 300 KCMIL Cu/Al: 2 AWG – 300 KCMIL 6 AWG 14 AWG – 2 AWG Cu/Al: 6 AWG - 300 KCMIL
Neutral and ground bars	Large holes (5/16-24 UNF) Small holes (10-32 UNF)	14 AWG – 1/0 AWG 14 AWG – 6 AWG
COMPLIANCE		
Compliance	UL 1741, UL 1741 SA, UL 1741 PCS, UL1998, UL869A <sup>5</sup> , UL67 <sup>5</sup> , UL508 <sup>5</sup> , UL50E <sup>5</sup> CSA 22.2 No. 107.1, 47 CFR, Part 15, Class B, ICES 003, AC156.	
2. Compatible with BRHDK125 Hold-Down Kit to comply with 2017 NEC 710.15E for back-fed circuit breakers.		
3. The Enpower is rated 22 kAIC		
4. Not included. Installer must provide properly rated breaker per circuit breaker list above.		
5. Sections from these standards were used during the safety evaluation and included in the UL 1741 listing.		

To learn more about Enphase offerings, visit [enphase.com](https://enphase.com)

© 2021 Enphase Energy. All rights reserved. Enphase, the Enphase logo, Enpower, and other trademarks or service names are the trademarks of Enphase Energy, Inc. Data subject to change. 2021-01-25



## Customer DETAILS

Brenda Hayes

4818 WARRINGTON DRIVE,  
NEW ORLEANS, LA, USA

## SYSTEM DETAILS

System Size:

**8.28 kW**

Modules:

23 APTOS DNA-120-MF26-360W

Inverter(s):

23 ENPHASE: IQ7 (240V)

Other:

1 ENPHASE IQ COMBINER 3 W/INTEGRATED  
ENVOY MONITORING  
1 ENPHASE: ENPOWER SMART SWITCH  
1 ENPHASE: ENCHARGE 10KW BATTERY  
----



## ELECTRICAL SPECS



ABDUR RAHMAN  
PV-042118-020-489

*Signature*

DRAWN BY

Duna Jenkins

5/2/22

SCALE: NTS

Q-7

# Enphase Encharge 10

The **Enphase Encharge 10™** all-in-one AC-coupled storage system is **reliable, smart, simple**, and **safe**. It is comprised of three base Encharge 3™ storage units, has a total usable energy capacity of 10.08 kWh and twelve embedded grid-forming microinverters with 3.84 kW power rating. It provides backup capability and installers can quickly design the right system size to meet the needs of both new and retrofit solar customers.



### Reliable

- Proven high reliability IQ Series Microinverters
- Ten-year limited warranty
- Three independent Encharge storage base units
- Twelve embedded IQ 8X-BAT Microinverters
- Passive cooling (no moving parts/fans)

### Smart

- Grid-forming capability for backup operation
- Remote software and firmware upgrade
- Mobile app-based monitoring and control
- Support for self consumption
- Utility time of use (TOU) optimization

### Simple

- Fully integrated AC battery system
- Quick and easy plug-and-play installation
- Interconnects with standard household AC wiring

### Safe

- Cells safety tested
- Lithium iron phosphate (LFP) chemistry for maximum safety and longevity

To learn more about Enphase offerings, visit [enphase.com](https://enphase.com)



## Enphase Encharge 10

MODEL NUMBER	
ENCHARGE-10-1P-NA	Encharge 10 battery storage system with integrated Enphase Microinverters and battery management unit (BMU). Includes: - Three Encharge 3.36 kWh base units (B03-A01-US00-1-3) - One Encharge 10 cover kit with cover, wall mounting bracket, watertight conduit hubs, and interconnect kit for wiring between batteries (B10-C-1050-0)
ACCESSORIES	
ENCHARGE-HNDL-R1	One set of Encharge base unit installation handles
OUTPUT (AC)	
@ 240 VAC¹	
Rated (continuous) output power	3.84 kVA
Peak output power	5.7 kVA (10 seconds)
Nominal voltage / range	240 / 211 – 264 VAC
Nominal frequency / range	60 / 57 – 61 Hz
Rated output current	16 A
Peak output current	24.6A (10 seconds)
Power factor (adjustable)	0.85 leading ... 0.85 lagging
Maximum units per 20 A branch circuit	1 unit (single phase)
Interconnection	Single-phase
Maximum AC short circuit fault current over 3 cycles	69.6 Arms
Round trip efficiency²	89%
BATTERY	
Total capacity	10.5 kWh
Usable capacity	10.08 kWh
Round trip efficiency	96%
Nominal DC voltage	67.2 V
Maximum DC voltage	73.5 V
Ambient operating temperature range	-15° C to 55° C (5° F to 131° F) non-condensing
Optimum operating temperature range	0° C to 30° C (32° F to 86° F)
Chemistry	Lithium iron phosphate (LFP)
MECHANICAL DATA	
Dimensions (WxHxD)	1070 mm x 664 mm x 319 mm (42.13 in x 26.14 in x 12.56 in)
Weight	Three individual 44.2 kg (97.4 lbs) base units plus 21.1 kg (48.7 lbs) cover and mounting bracket; total 154.7 kg (341 lbs)
Enclosure	Outdoor – NEMA type 3R
IQ 8X-BAT microinverter enclosure	NEMA type 6
Cooling	Natural convection – No fans
Altitude	Up to 2500 meters (8200 feet)
Mounting	Wall mount
FEATURES AND COMPLIANCE	
Compatibility	Compatible with grid-tied PV systems. Compatible with Enphase M215/M250 and IQ Series Micros, Enphase Enpower, and Enphase IQ Envoy for backup operation.
Communication	Wireless 2.4 GHz
Services	Backup, self-consumption, TOU, Demand Charge, NEM Integrity
Monitoring	Enlighten Manager and MyEnlighten monitoring options; API integration
Compliance	UL 9540, UN 38.3, UL 9540A, UL 1998, UL 991, NEMA Type 3R, AC156 EMI: 47 CFR, Part 15, Class B, ICES 003 Cell Module: UL 1973, UN 38.3 Inverters: UL 62109-1, IEC 62109-2, UL 1741SA, CAN/CSA C22.2 No. 107.1-16, and IEEE 1547
LIMITED WARRANTY	
Limited Warranty³	>70% capacity, up to 10 years or 4000 cycles
1. Supported in backup/off grid operations 2. AC to Battery to AC at 50% power rating. 3. Whichever occurs first. Restrictions apply.	

To learn more about Enphase offerings, visit [enphase.com](https://enphase.com)

© 2021 Enphase Energy. All rights reserved. Enphase, the Enphase logo, Encharge 10, and other trademarks or service names are the trademarks of Enphase Energy, Inc. Data subject to change. 2021-03-01



# Customer DETAILS

Brenda Hayes

4818 WARRINGTON DRIVE,  
NEW ORLEANS, LA, USA

# SYSTEM DETAILS

System Size:
8.28 kW
Modules:
23 APTOS DNA 120 MF26 360W
Inverter(s):
23 ENPHASE: IQ7 (240V)
Other:
1 ENPHASE IQ COMBINER 3 W/INTEGRATED ENVOY MONITORING
1 ENPHASE: ENPOWER SMART SWITCH
1 ENPHASE: ENCHARGE 10KW BATTERY
----



# ELECTRICAL SPECS



ABDUR RAHMAN  
PV-042118-020-489

*Signature*

DRAWN BY  
Duna Jenkins 5/2/22

SCALE: NTS

Q-8