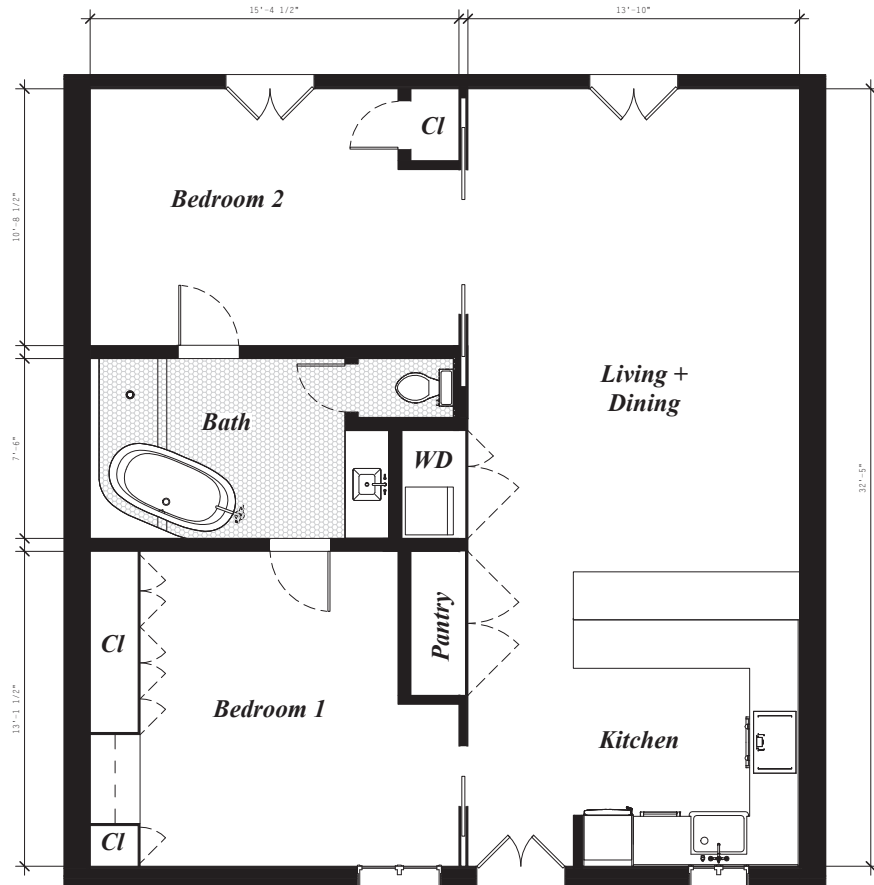


Proposed and Existing Layouts

Balcony Along Rampart

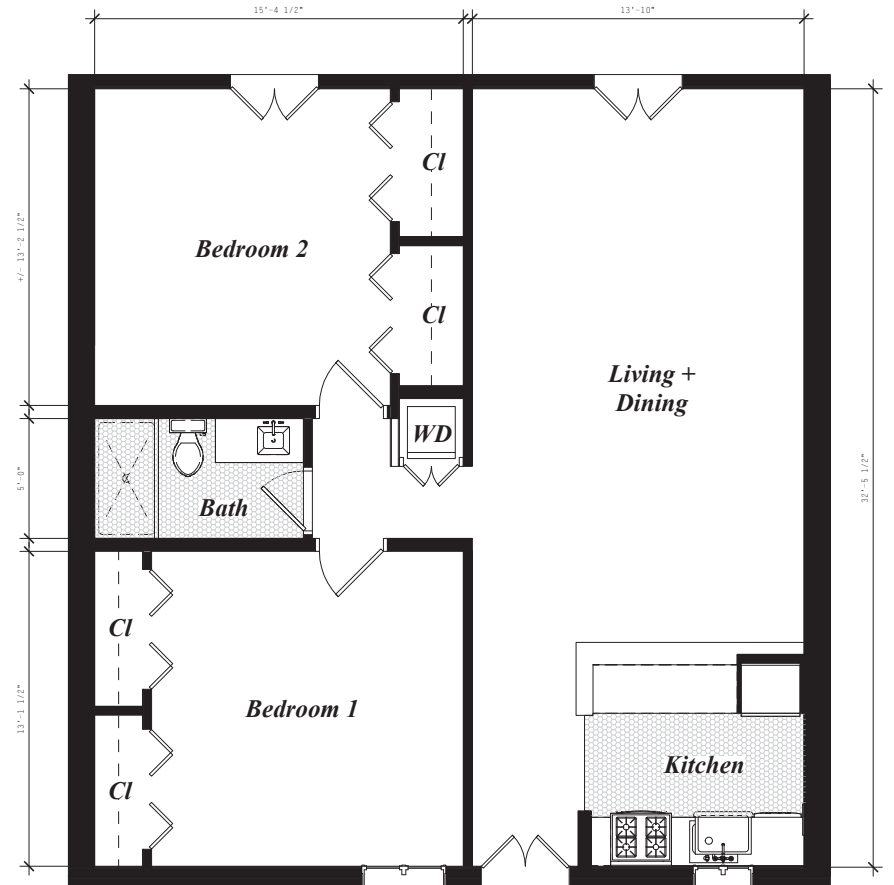


Balcony on Parking Lot

Proposed Layout
1'-0" = 1/8"

↑
Condo
Entrance

Balcony Along Rampart



Balcony on Parking Lot

Existing Layout
1'-0" = 1/8"

↑
Condo
Entrance

Notes // 1. This is a condo on the second floor of a multi-unit residential building. There is no exterior work in the scope of this permit. All exterior doors and windows to be preserved and remain in place. 2. The structure and fire-rated assemblies that come in contact with Unit C will remain untouched and in tact throughout construction. All existing partitions inside the condominium are non-load bearing and un-rated.