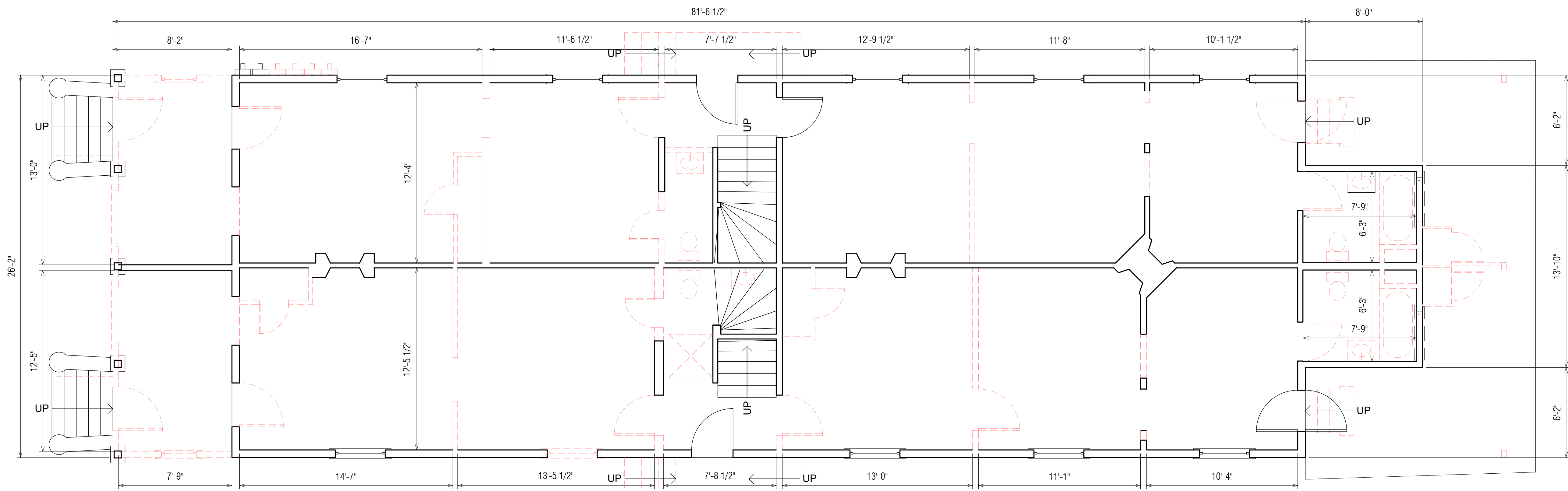


**PROPOSED 1st FLOOR PLAN**  
 SC: 1/4" = 1'-0"

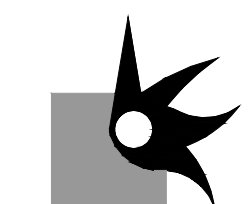
**LEGEND:**

- NEW STUD WALL
- EXISTING STUD WALL
- DEMOLISH



**EXISTING/DEMOLITION 1st FLOOR PLAN**  
 SC: 1/4" = 1'-0"

**RENOVATION OF**  
**621-623 KERLEREC STREET**  
 New Orleans, Louisiana 70116

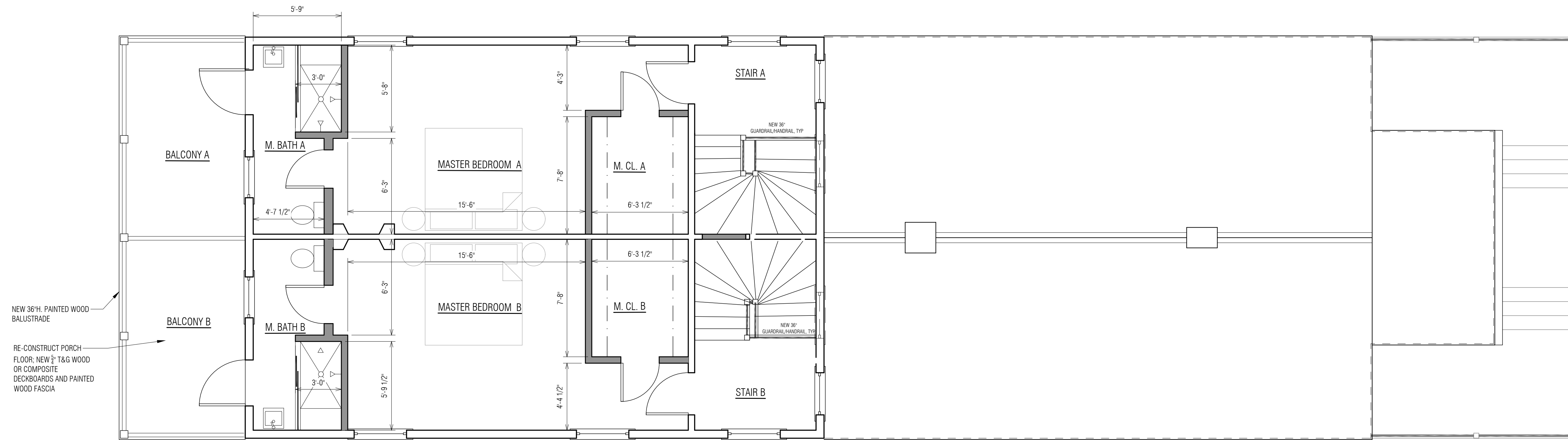


**LKHarm Architects**  
 A Professional Architectural Corporation  
 6238 Argonne Boulevard  
 New Orleans, Louisiana 70124  
 504.485.5870 harmon@lkharmarchitects.com

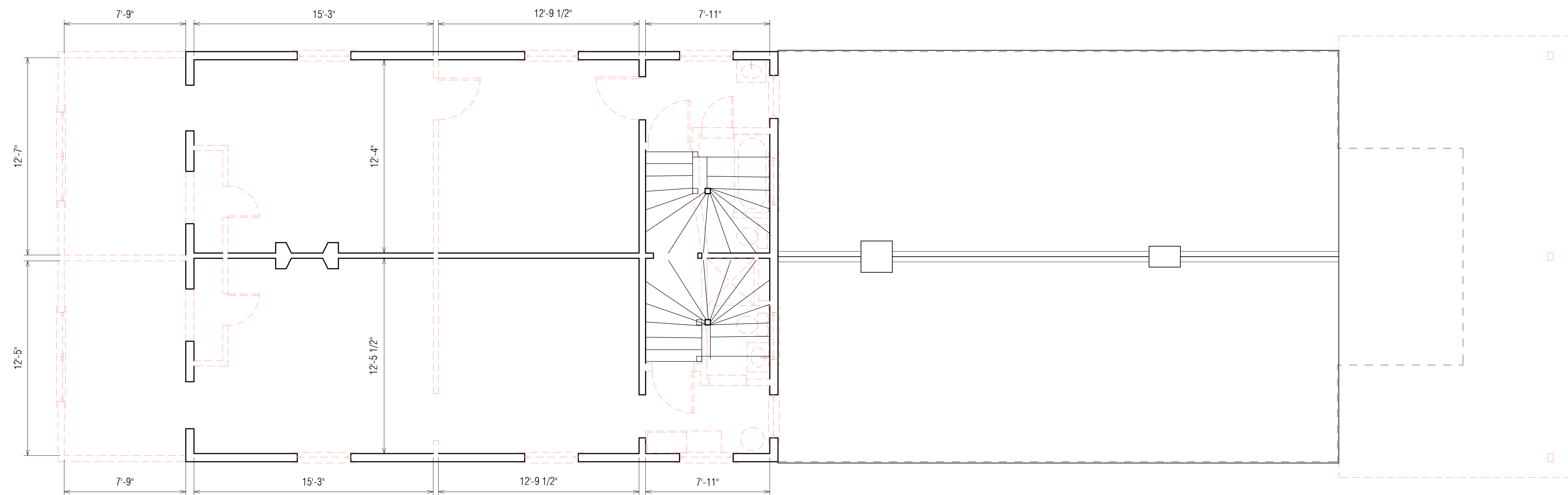
4.6.2022  
H.D.L.C.

**A1**

LKH#6821



 **PROPOSED 2nd FLOOR PLAN**  
 SC: 1/4" = 1'-0"



 **EXISTING/DEMOLITION 2nd FLOOR PLAN**  
 SC: 1/4" = 1'-0"

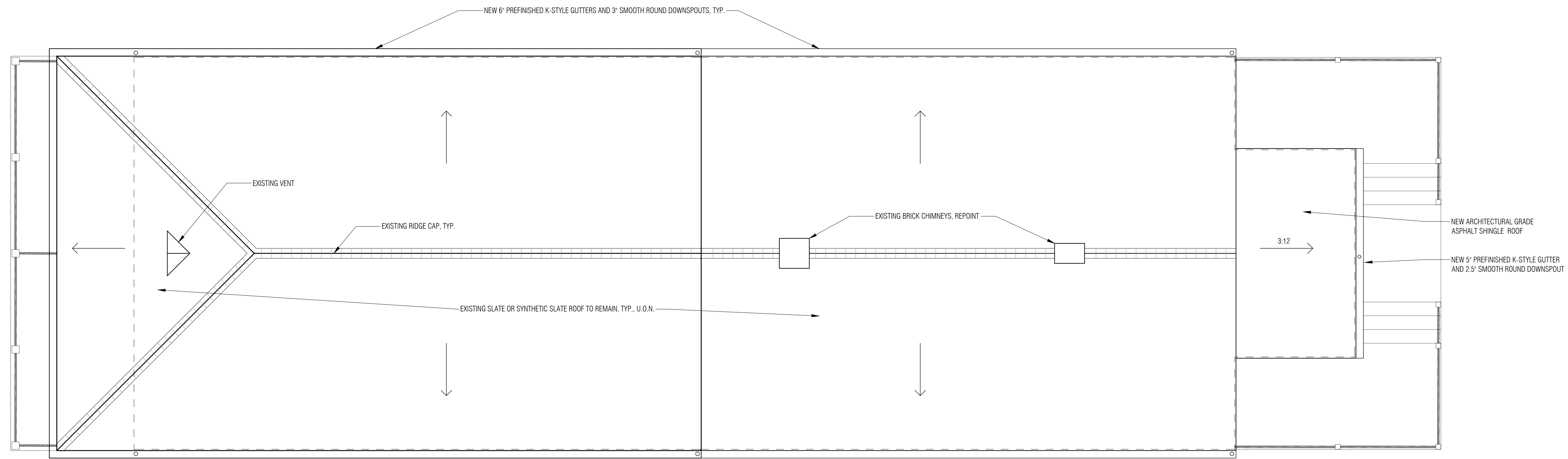
**RENOVATION OF**  
**621-623 KERLEREC STREET**  
 New Orleans, Louisiana 70116

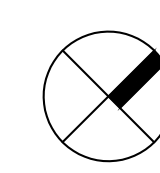
 **LKHarm Architects**  
 A Professional Architectural Corporation  
 6238 Argonne Boulevard  
 New Orleans, Louisiana 70124  
 504.485.5870 harmon@lkharmarchitects.com

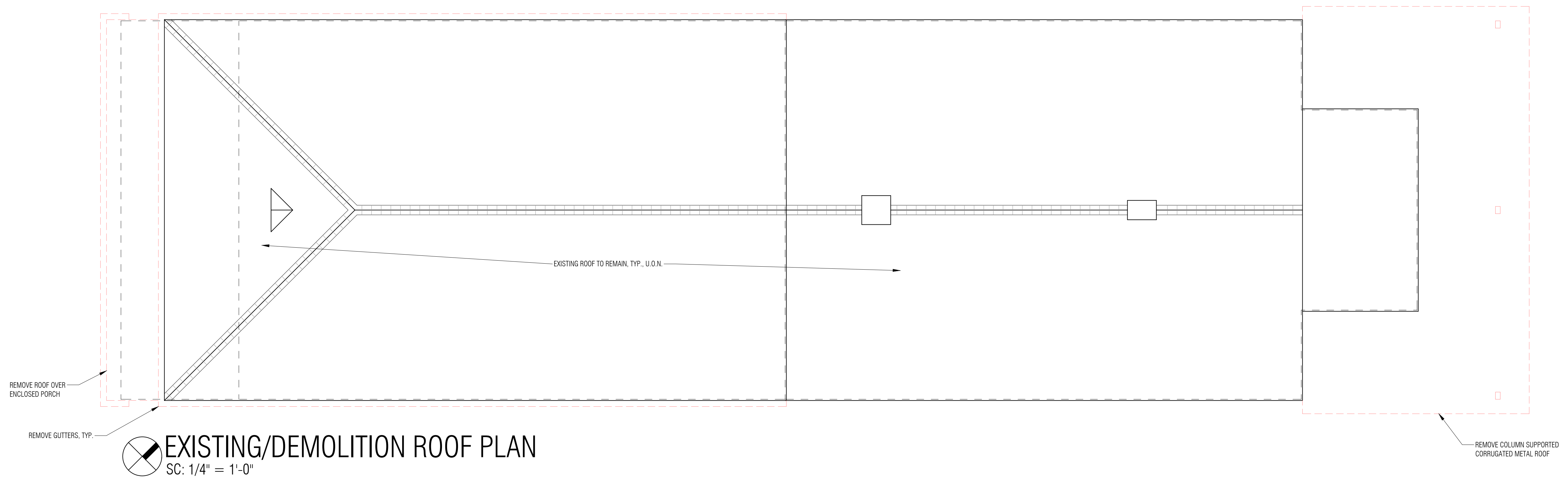
4.6.2022  
 H.D.L.C.

**A2**

LKH#6821



 **PROPOSED ROOF PLAN**  
 SC: 1/4" = 1'-0"



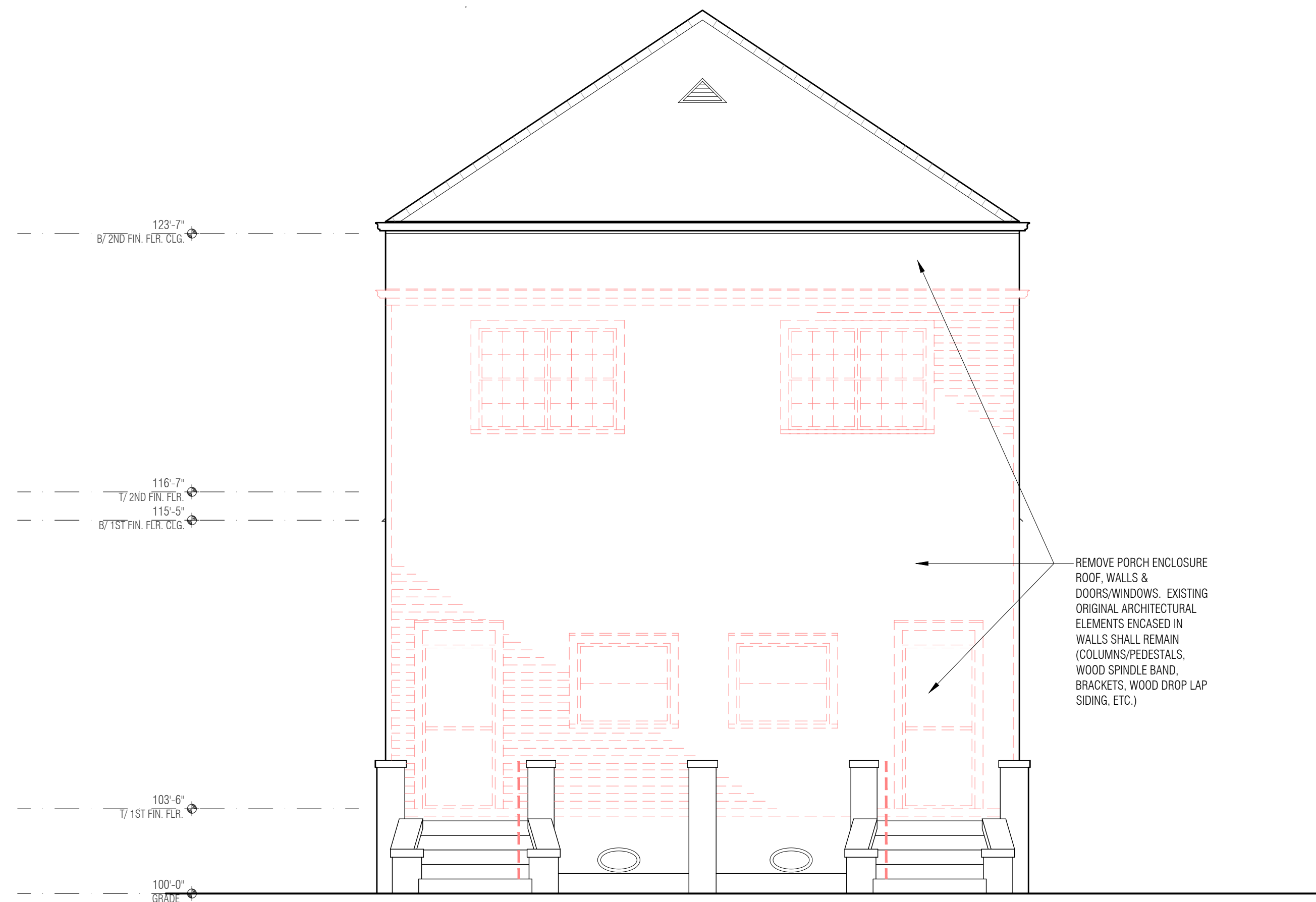
 **EXISTING/DEMOLITION ROOF PLAN**  
 SC: 1/4" = 1'-0"

**RENOVATION OF**  
**621-623 KERLEREC STREET**  
 New Orleans, Louisiana 70116

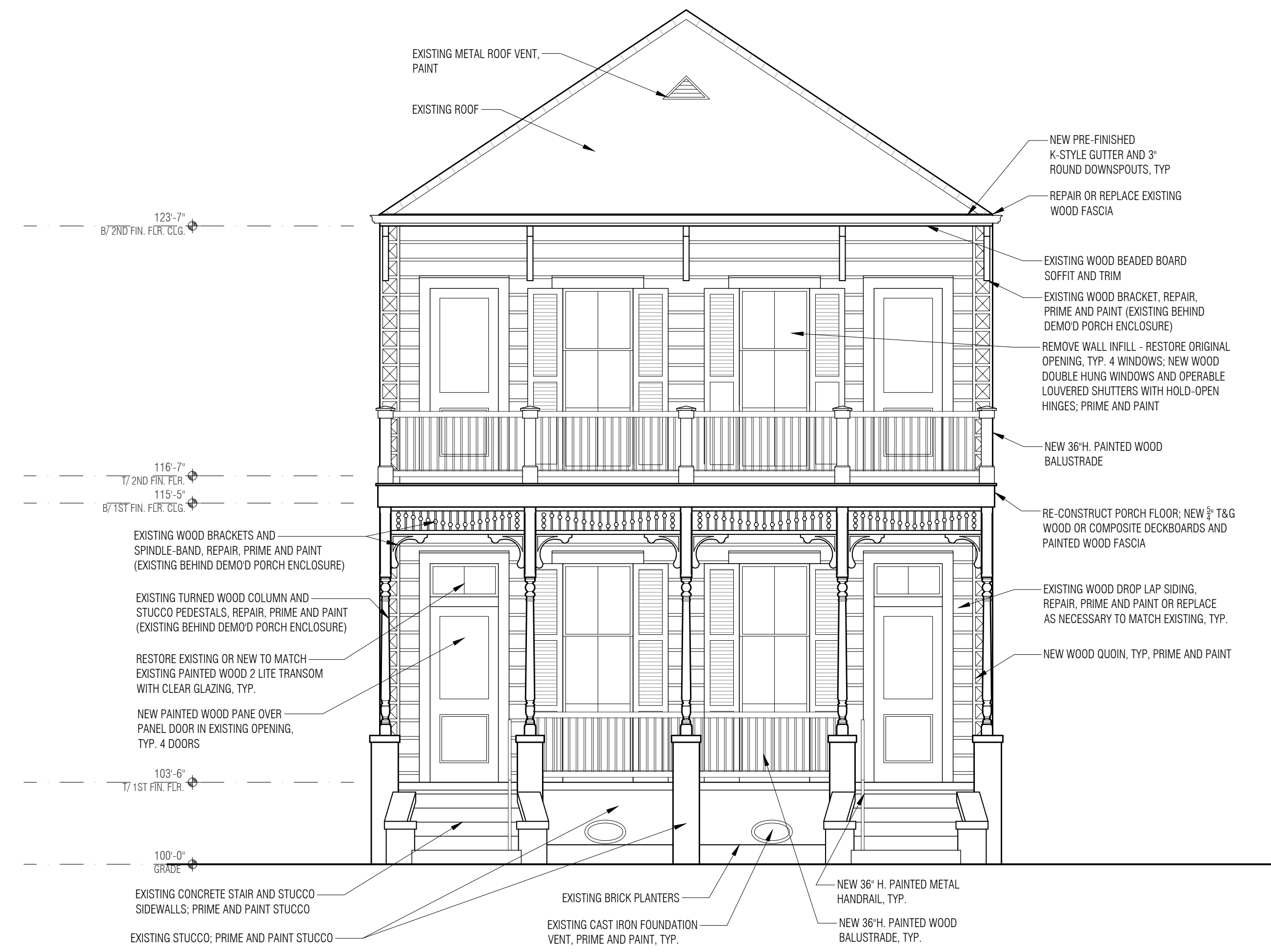
 **LKHarm Architects**  
 A Professional Architectural Corporation  
 6238 Argonne Boulevard  
 New Orleans, Louisiana 70124  
 504.485.5870 harmon@lkharmarchitects.com

4.6.2022  
 H.D.L.C.

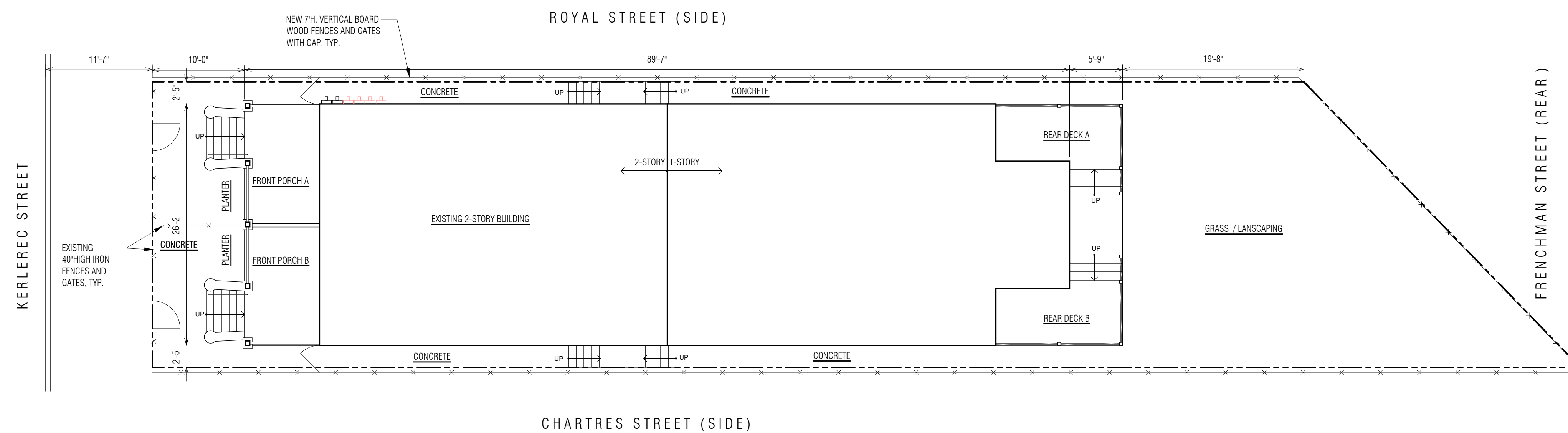
**A3**  
 LKH#6821



**EXISTING / DEMOLITION FRONT ELEVATION**  
 SC: 1/4" = 1'-0"

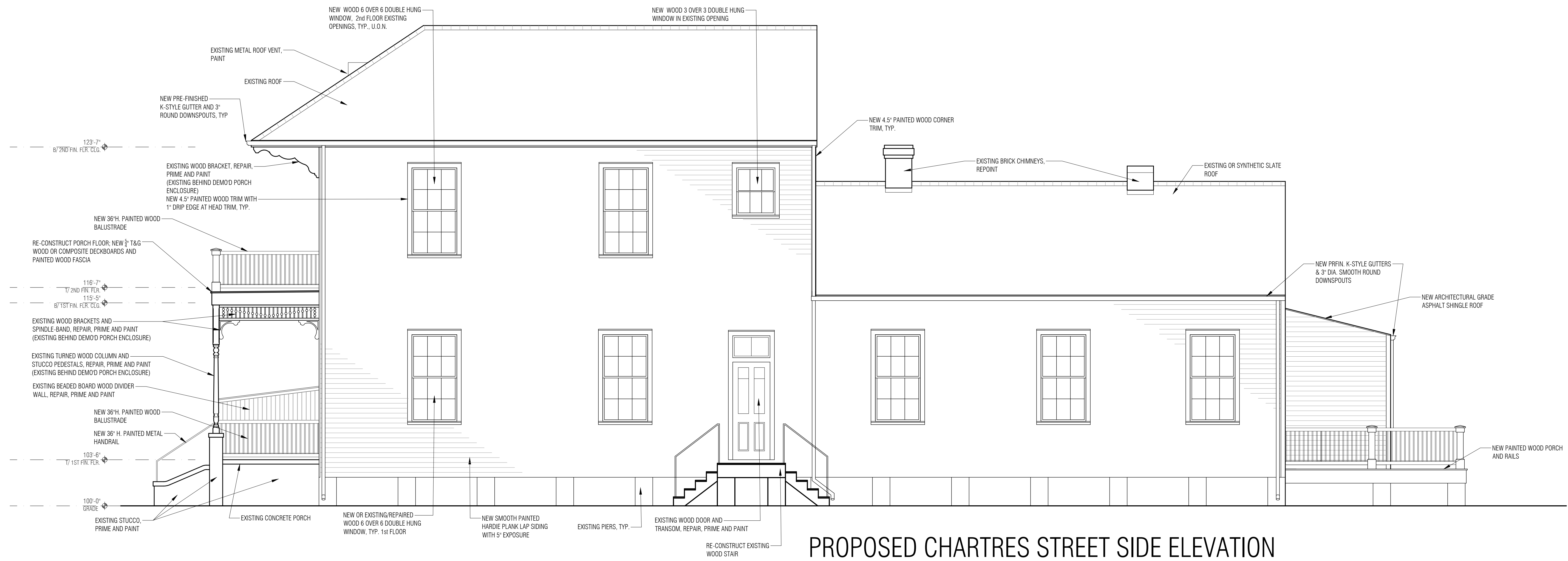


**PROPOSED FRONT ELEVATION**  
 SC: 1/4" = 1'-0"

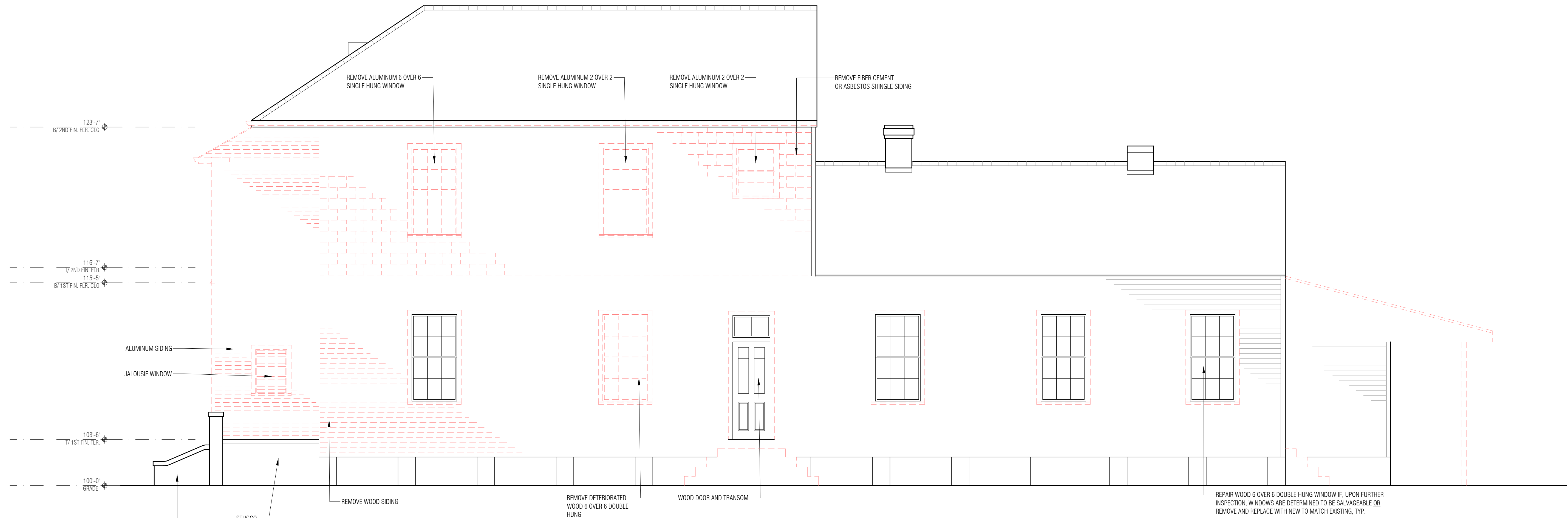


**SITE PLAN**  
 SC: 1/8" = 1'-0"

<b>RENOVATION OF</b> <b>621-623 KERLEREC STREET</b> New Orleans, Louisiana 70116	 <b>LKHArmon Architects</b> A Professional Architectural Corporation 6238 Argonne Boulevard New Orleans, Louisiana 70124 504.485.5870 harmon@lkharmonarchitects.com	4.6.2022 H.D.L.C.	 LKH#6821

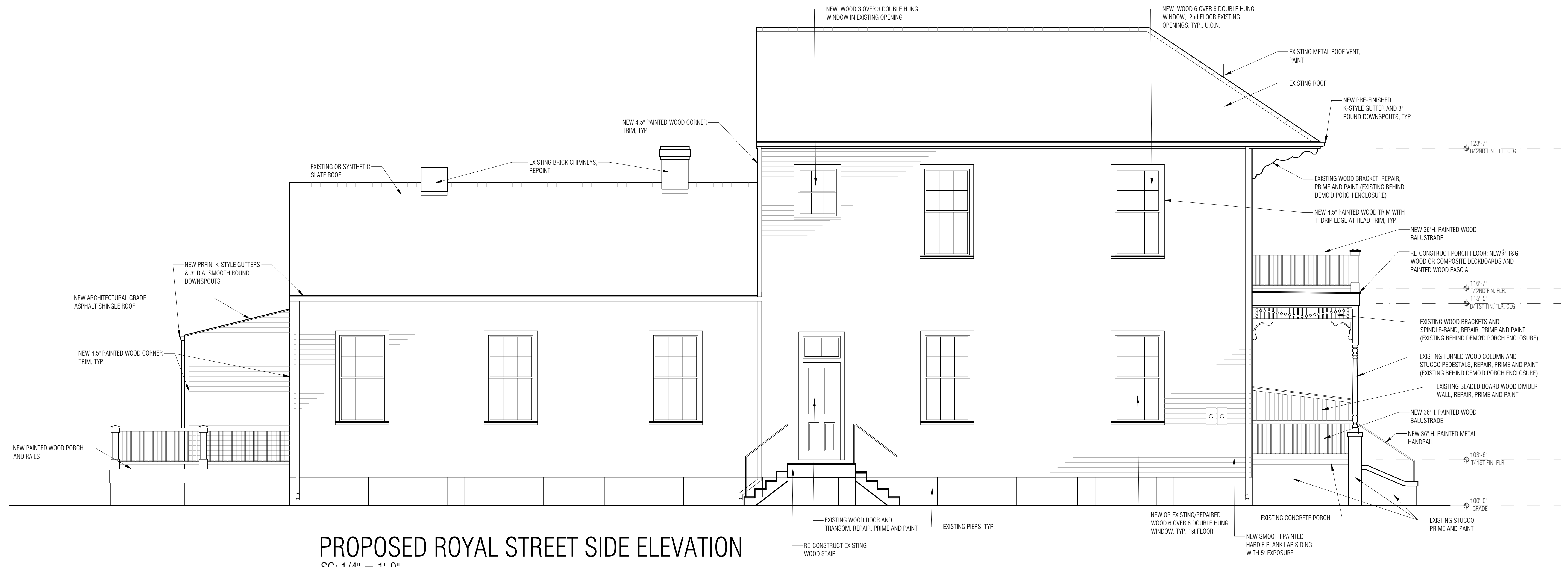


**PROPOSED CHARTRES STREET SIDE ELEVATION**  
 SC: 1/4" = 1'-0"

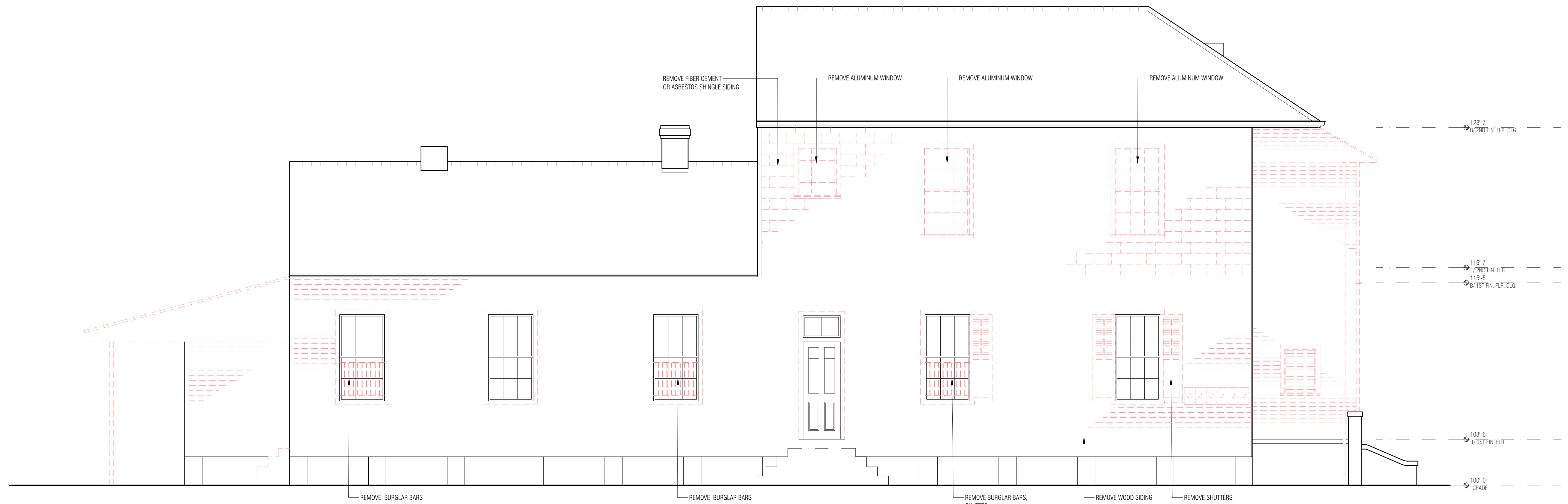


**EXISTING / DEMOLITION CHARTRES STREET SIDE ELEVATION**  
 SC: 1/4" = 1'-0"

<b>RENOVATION OF</b> <b>621-623 KERLEREC STREET</b> New Orleans, Louisiana 70116	 <b>LKHarm Architects</b> A Professional Architectural Corporation 6238 Argonne Boulevard New Orleans, Louisiana 70124 504.485.5870 harmon@lkharmarchitects.com	4.6.2022 H.D.L.C.	 LKH#6821

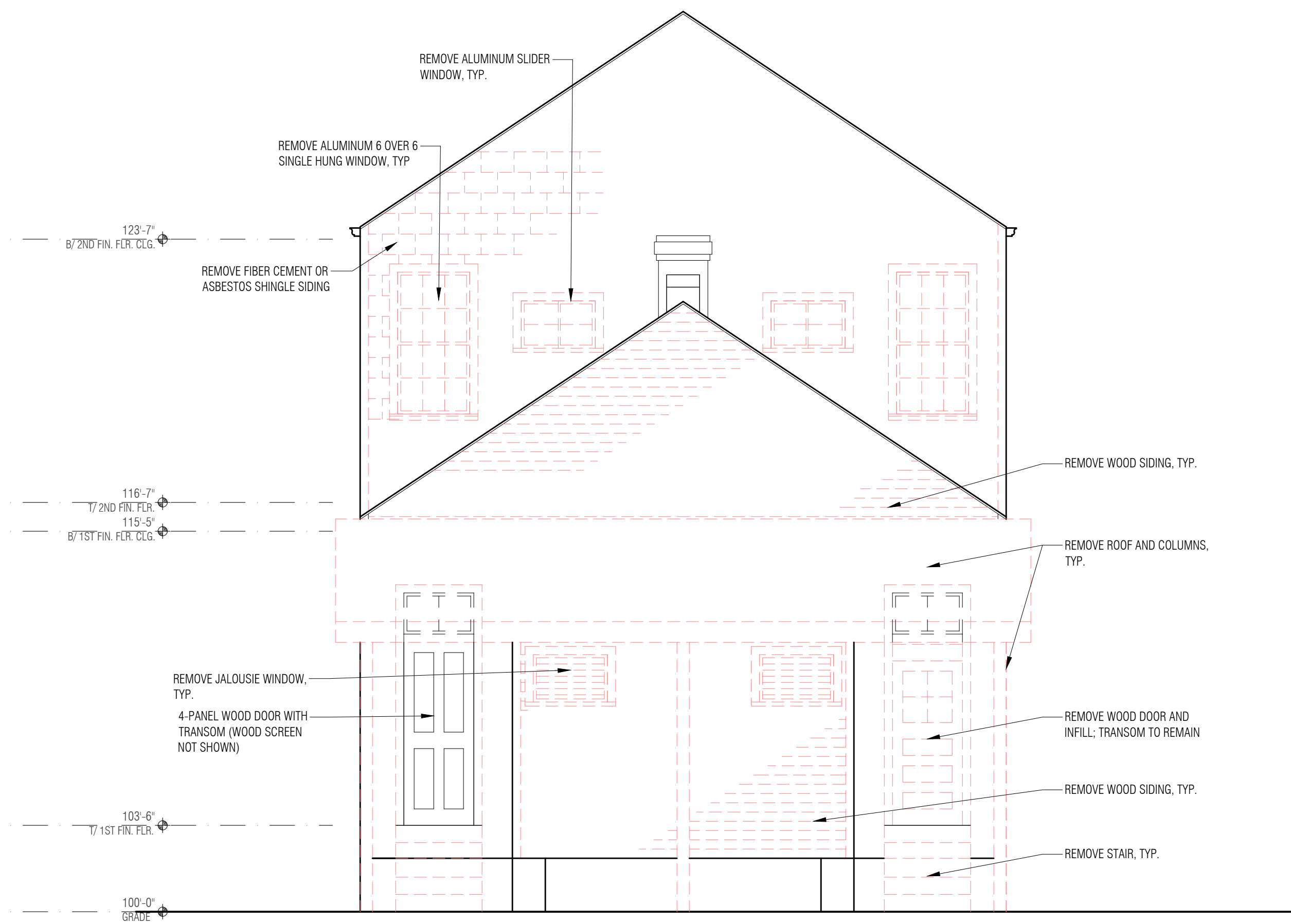


**PROPOSED ROYAL STREET SIDE ELEVATION**  
 SC: 1/4" = 1'-0"

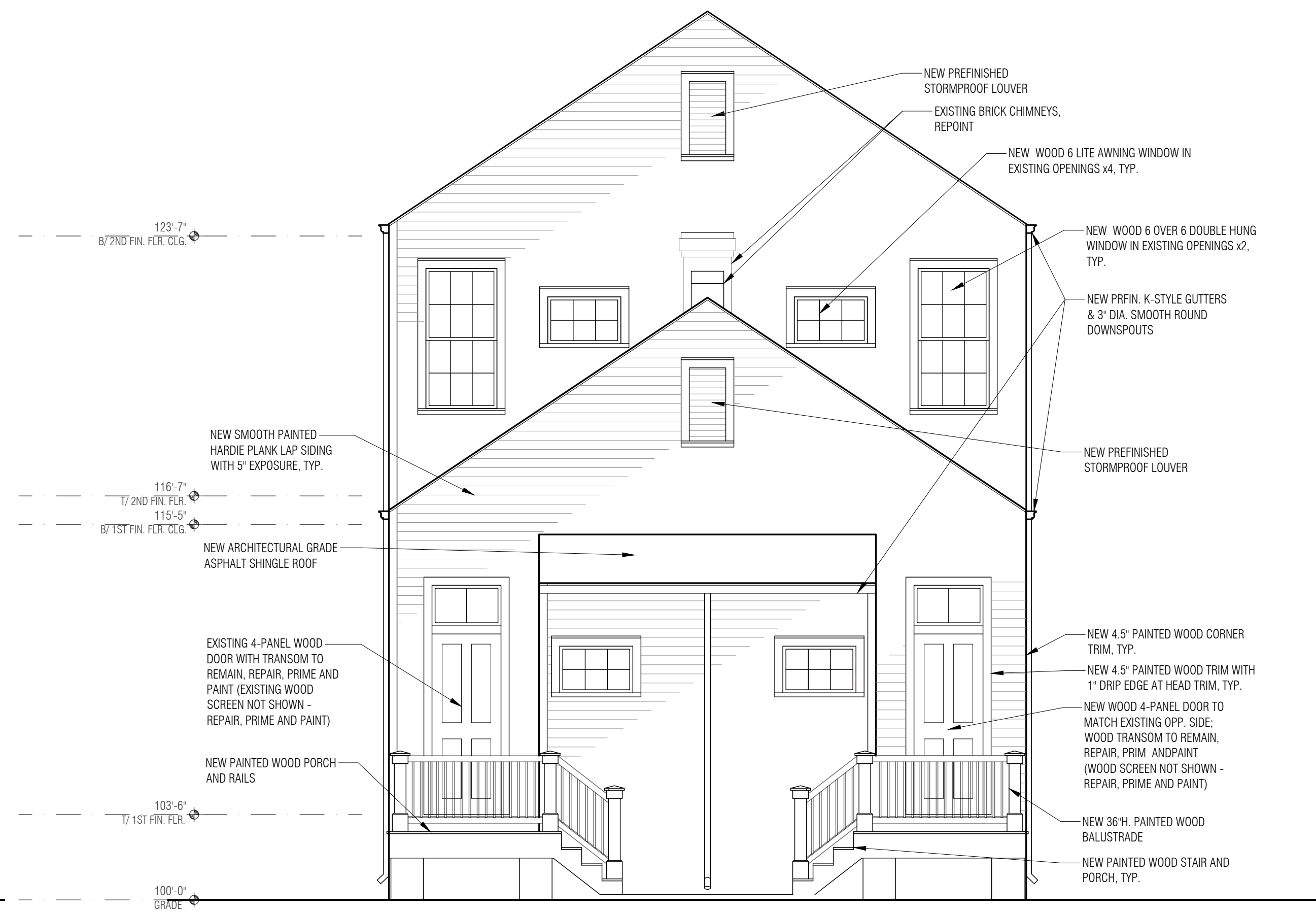


**EXISTING / DEMOLITION ROYAL STREET SIDE ELEVATION**  
 SC: 1/4" = 1'-0"

<b>RENOVATION OF</b> <b>621-623 KERLEREC STREET</b> New Orleans, Louisiana 70116	 <b>LKHarm Architects</b> A Professional Architectural Corporation 6238 Argonne Boulevard New Orleans, Louisiana 70124 504.485.5870 harmon@lkharmarchitects.com	4.6.2022 H.D.L.C.	 LKH#6821



**EXISTING / DEMOLITION REAR ELEVATION**  
 SC: 1/4" = 1'-0"



**PROPOSED REAR ELEVATION**  
 SC: 1/4" = 1'-0"

**RENOVATION OF**  
**621-623 KERLEREC STREET**  
 New Orleans, Louisiana 70116



**LKHarmon Architects**  
 A Professional Architectural Corporation  
 6238 Argonne Boulevard  
 New Orleans, Louisiana 70124  
 504.485.5870 harmon@lkharmonarchitects.com

4.6.2022  
 H.D.L.C.

**A7**

LKH#6821