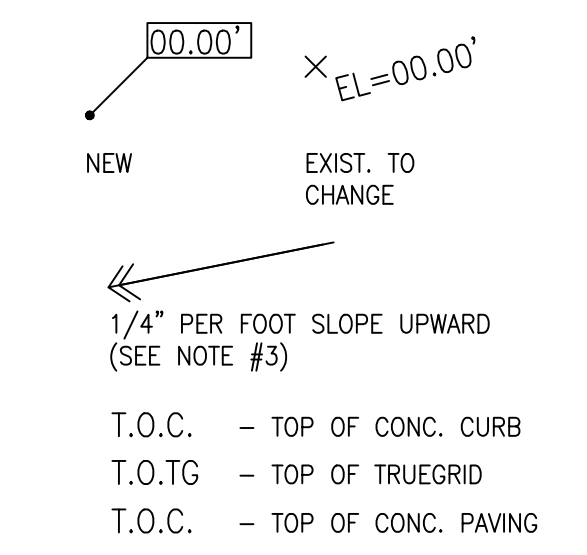


1 GRADING SITE PLAN
SCALE: 3/32"=1'-0"

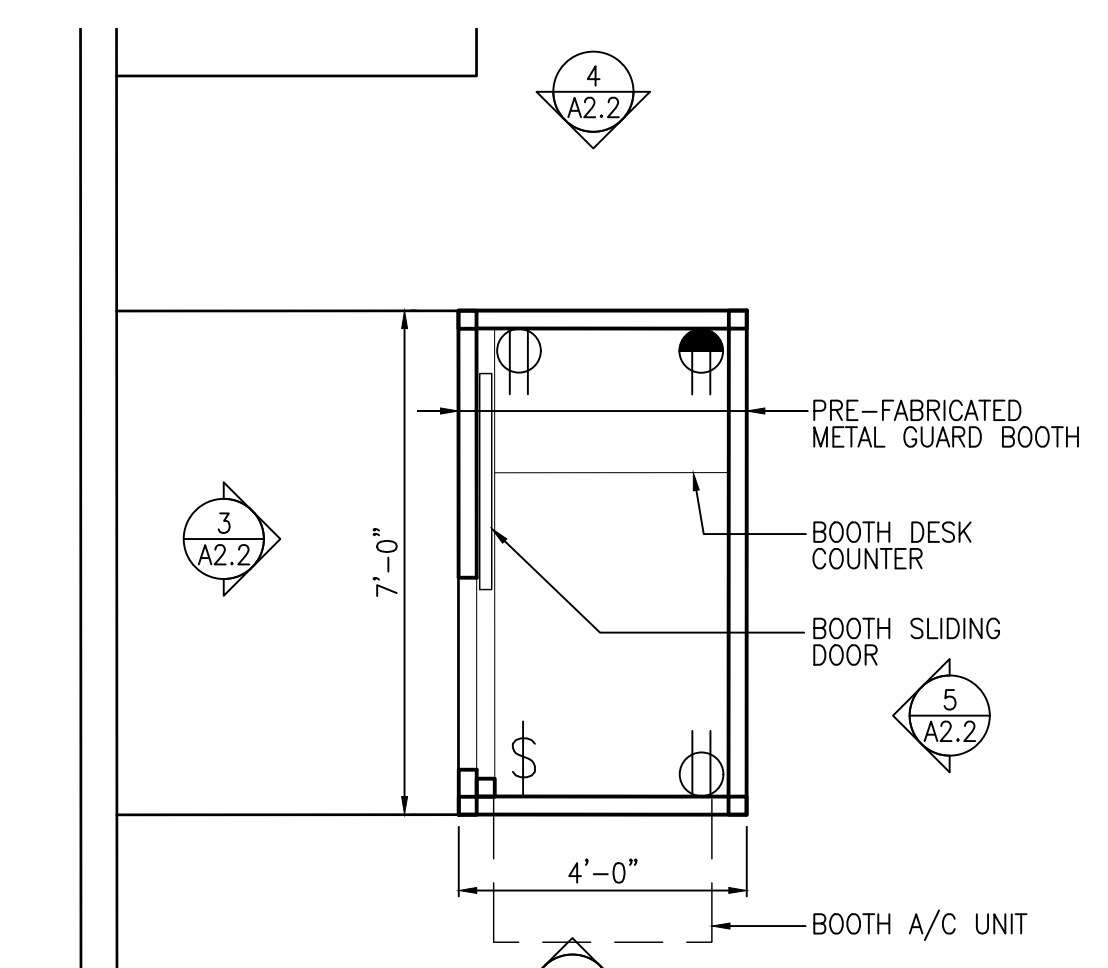
GENERAL NOTES:

1. - REMOVE & DISCARD ALL ABANDONED UTILITY MANHOLES - CHECK WITH NEW ORLEANS SEWERAGE & WATER BOARD TO SEE WHICH MANHOLES CAN BE REMOVED & WHICH MANHOLES MUST REMAIN.
2. - IF EXISTING MANHOLE COVERS THAT MUST REMAIN ARE SET TOO HIGH OR TOO LOW TO ACCOMMODATE NEW CONCRETE SIDEWALK RUNNING FLUSH WITH THEIR TOP COVER, MANHOLE COVERS AND FRAMES MUST BE RESET TO THE NEW CONCRETE SIDEWALK ELEVATION.
3. - SLOPE NEW CONCRETE SIDEWALK FROM GRANITE CURBING OR FROM EDGE OF CONCRETE SIDEWALK AT STREET SIDE 1/4" PER FOOT UP TOWARDS PROPERTY LINE. WORK CONCRETE AROUND EXISTING UTILITY MANHOLES SUCH THAT CONCRETE MEETS FLUSH WITH THE TOP OF STEEL COVER.

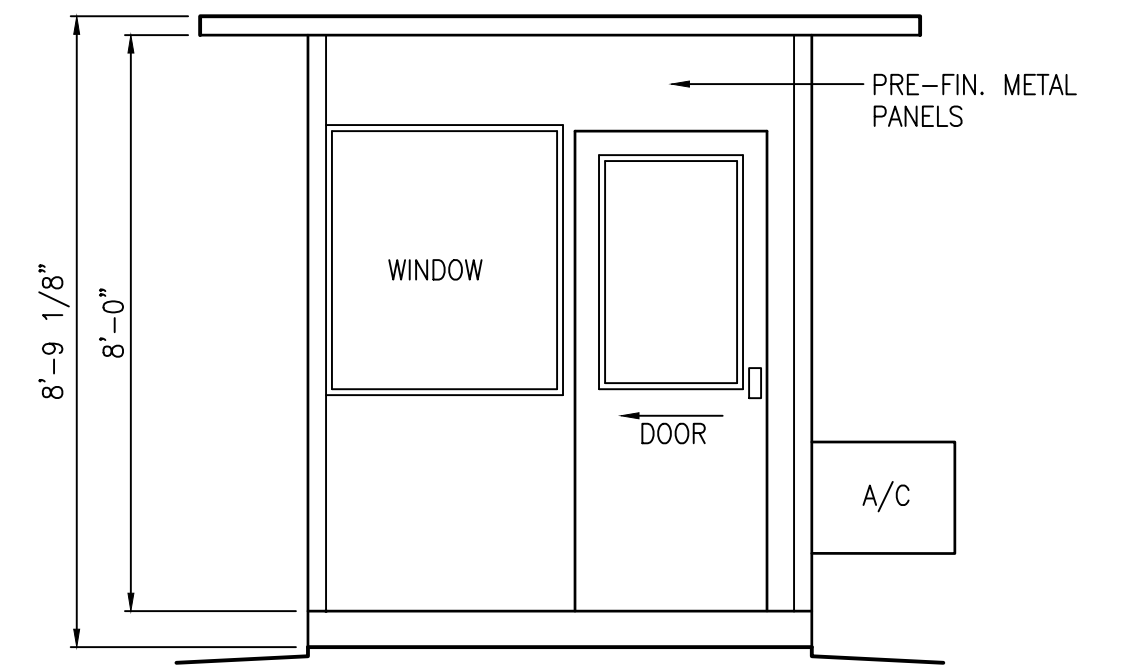
TOPOGRAPHIC KEY



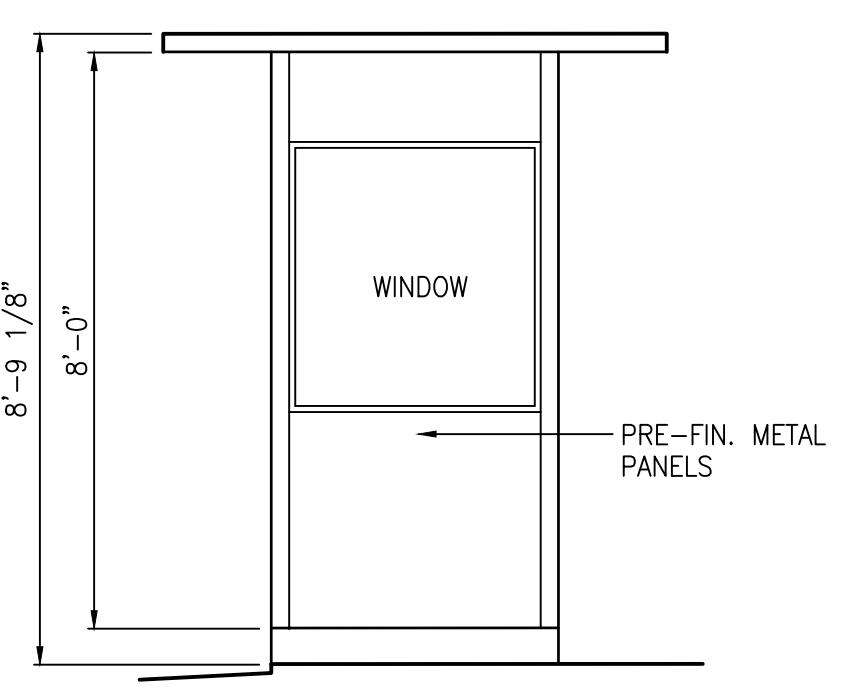
NOTE: SECURITY GUARD BOOTH TO BE QUOTE #085408 BY PANEL BUILT INC.
- ELIJAH RYALS, SALES ACCOUNT MANAGER: 706-994-5353;
ERYALS@PANELBUILT.COM



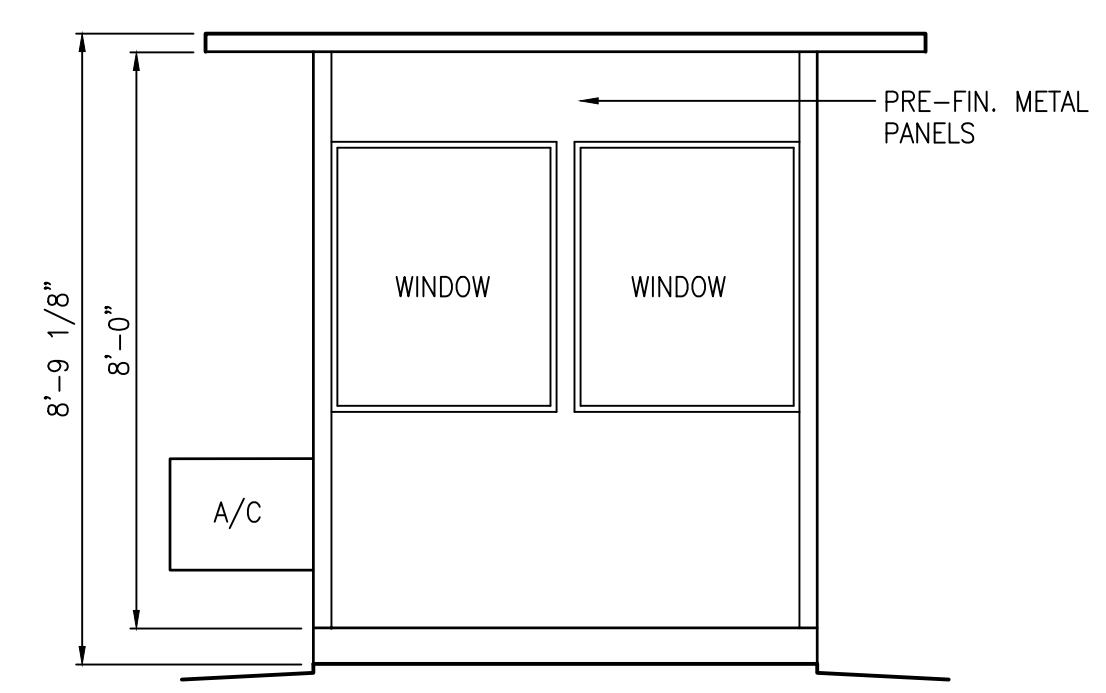
2 BOOTH PLAN
SCALE: 3/8"=1'-0"



3 BOOTH ELEVATION
SCALE: 3/8"=1'-0"

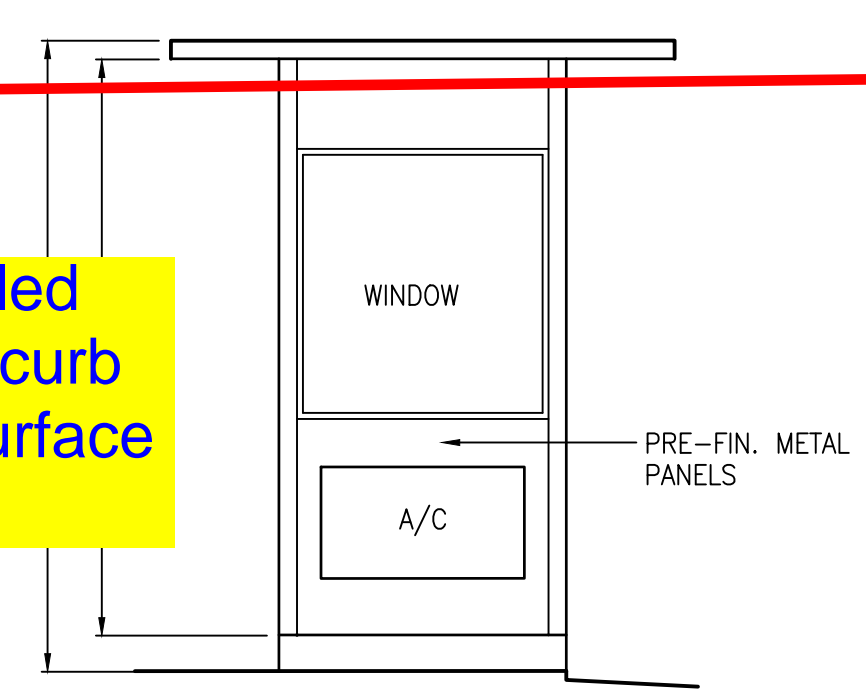


4 BOOTH ELEVATION
SCALE: 3/8"=1'-0"



5 BOOTH ELEVATION
SCALE: 3/8"=1'-0"

- LEGEND**
- 110 V DUPLEX 18" AFF. - TYP.
 - BOOTH DATA/PHONE PORT



6 BOOTH ELEVATION
SCALE: 3/8"=1'-0"

Perforated underdrain line wrapped in geotextile fabric connected to back of catch basin per S&WB standard details



New Parking Lot for the Center for Restorative Breast Surgery & St. Charles Surgical Hospital
1750 Robert C Blakes, SR Dr.; New Orleans, LA

SCALE: AS SHOWN FILE NAME: 18061/Site04j.B
DATE: 16 June 2021

STEVEN J. FINEGAN ARCHITECTS, LTD.
A PROFESSIONAL CORPORATION
123 S. Pierce St. - New Orleans, LA 70119
(504)486-5744 www.stevfineganarchitect.com
E-mail: stevfinegan@nocoxmail.com

| NO. | DATE | REVISIONS |
|-----|----------|-------------------|
| | 08-12-21 | Sidewalk Revision |

A2.2

This drawing is the property of STEVEN J. FINEGAN ARCHITECTS, LTD. It is not to be reproduced, copied or altered in whole or in part. It is not to be used for any purpose without the approval of STEVEN J. FINEGAN ARCHITECTS, LTD. and is to be returned on request.