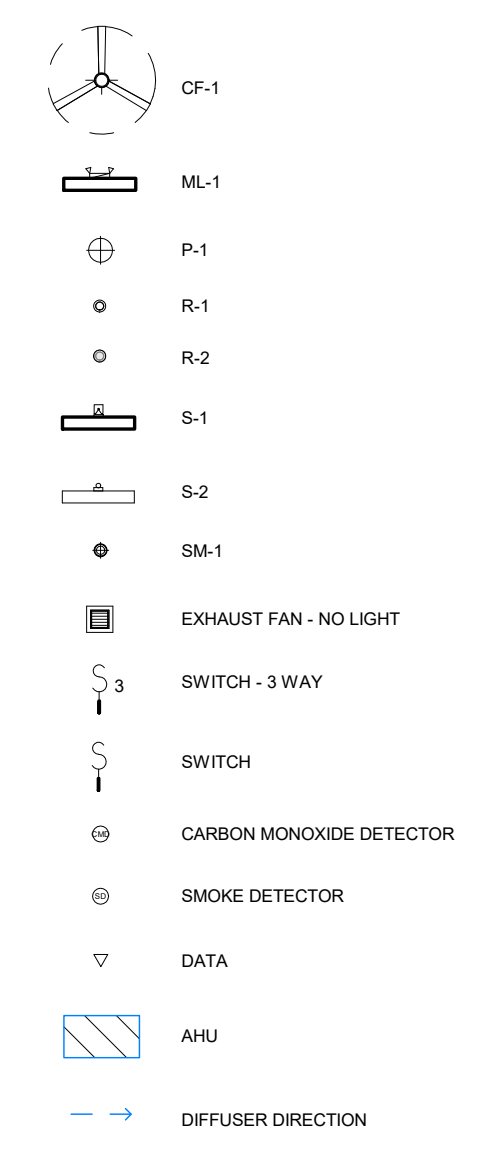


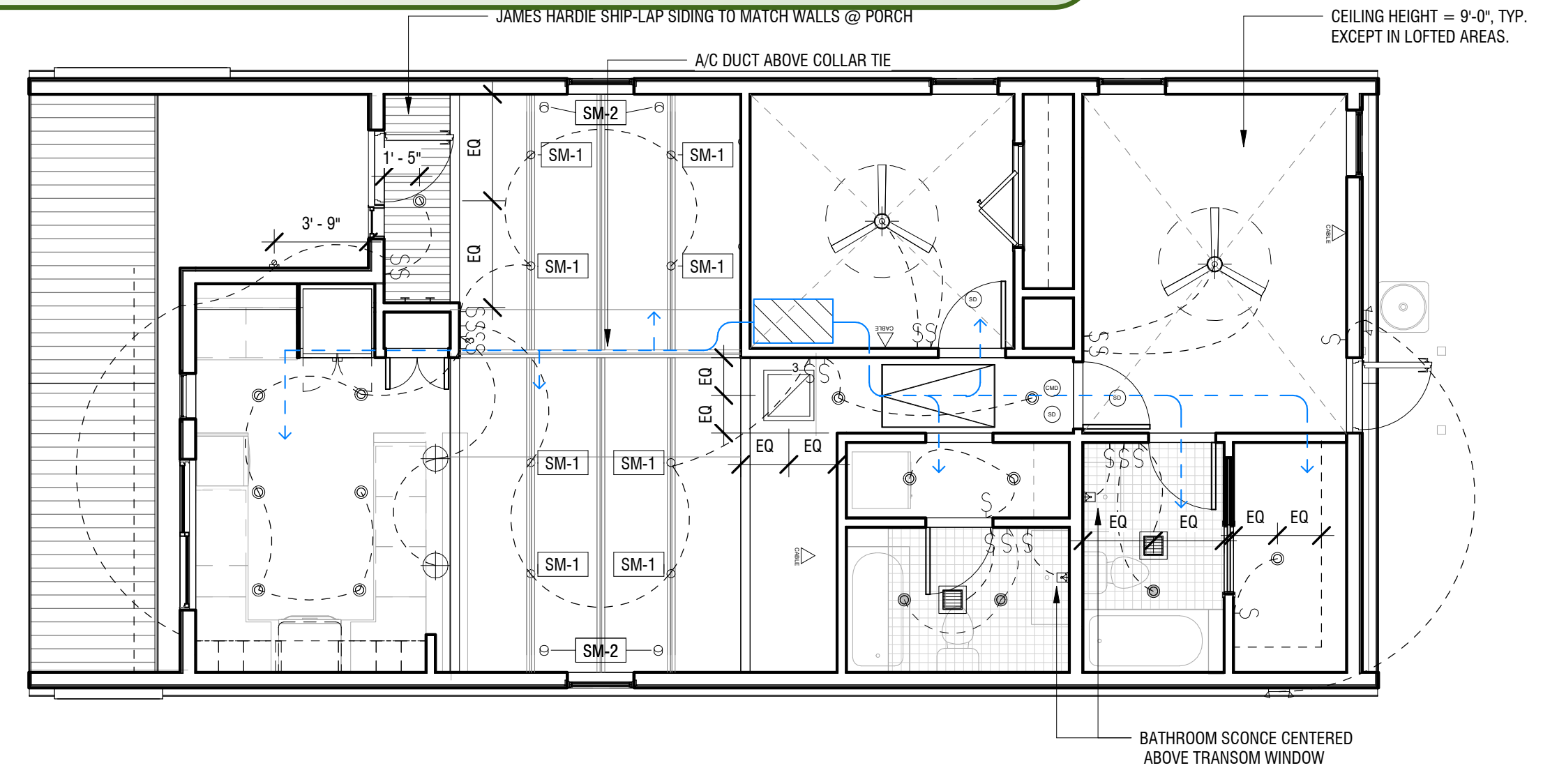
2 Plumbing Riser Diagram
NTS

| LIGHTING FIXTURE SCHEDULE | | | |
|---------------------------|----------------------------------|----------|--|
| MARK | TYPE | QUANTITY | NOTES |
| CF-1 | CEILING FAN WITH LIGHT | 2 | |
| ML-1 | MOTION DETECTOR FLOODLIGHT | 2 | |
| P-1 | PENDANT LIGHT - ISLAND | 2 | |
| R-1 | RECESSED CAN LIGHT & TRIM TYPE 1 | 13 | |
| R-2 | RECESSED CAN LIGHT & TRIM TYPE 2 | 3 | VAPOR RESISTANT, IN BATHROOMS & EXTERIOR LOCATIONS |
| S-1 | BATHROOM SCONCE LIGHT | 2 | |
| S-2 | EXTERIOR SCONCE LIGHT | 1 | BLACK FINISH |
| SM-1 | SURFACE MOUNTED SPOTLIGHT | 10 | CONDUIT TO RUN ALONG TOP CHANNEL OF EXPOSED BEAMS |
| SM-2 | SURFACE MOUNTED SPOTLIGHT | 4 | MOUNTED TO CEILING ABOVE EXPOSED RAFTERS |

ELECTRICAL LEGEND



APPROVED
By H Blancq at 10:53 am, Dec 07, 2021



1 MEP PLAN
3/16" = 1'-0"

- NOTES:**
- GFCI CIRCUITS AND/OR OUTLETS IN ALL WET LOCATIONS AS REQUIRED BY CODE
 - PROVIDE OUTLETS AS REQUIRED BY CODE

HbH SWIFT

1500 Dumaine St
New Orleans, LA 70116



ARC REVIEW SET
11/19/2021

drawn by: AC
checked by: SW

revisions:

A2.5
MEP PLAN