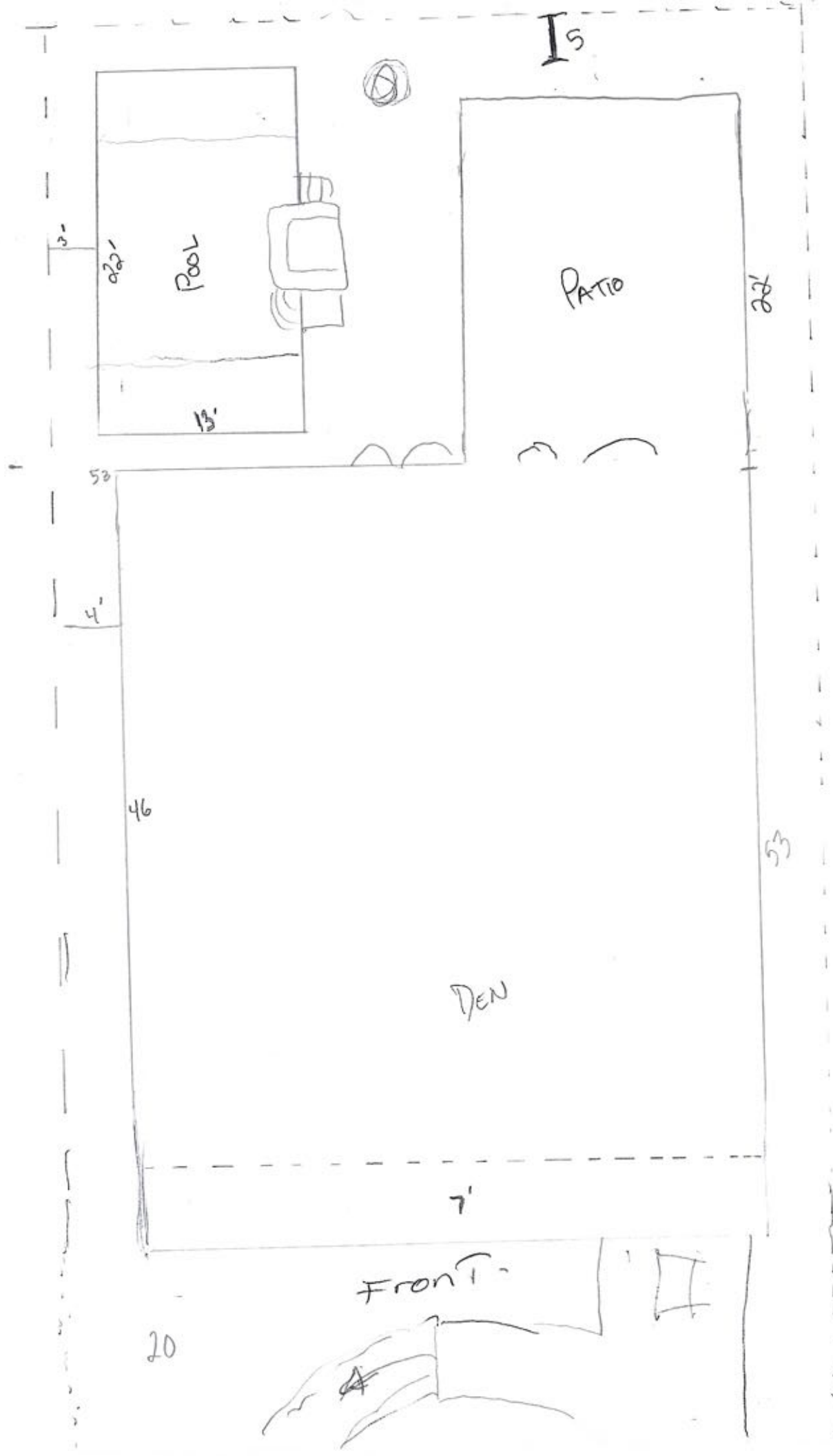


46
1472



20

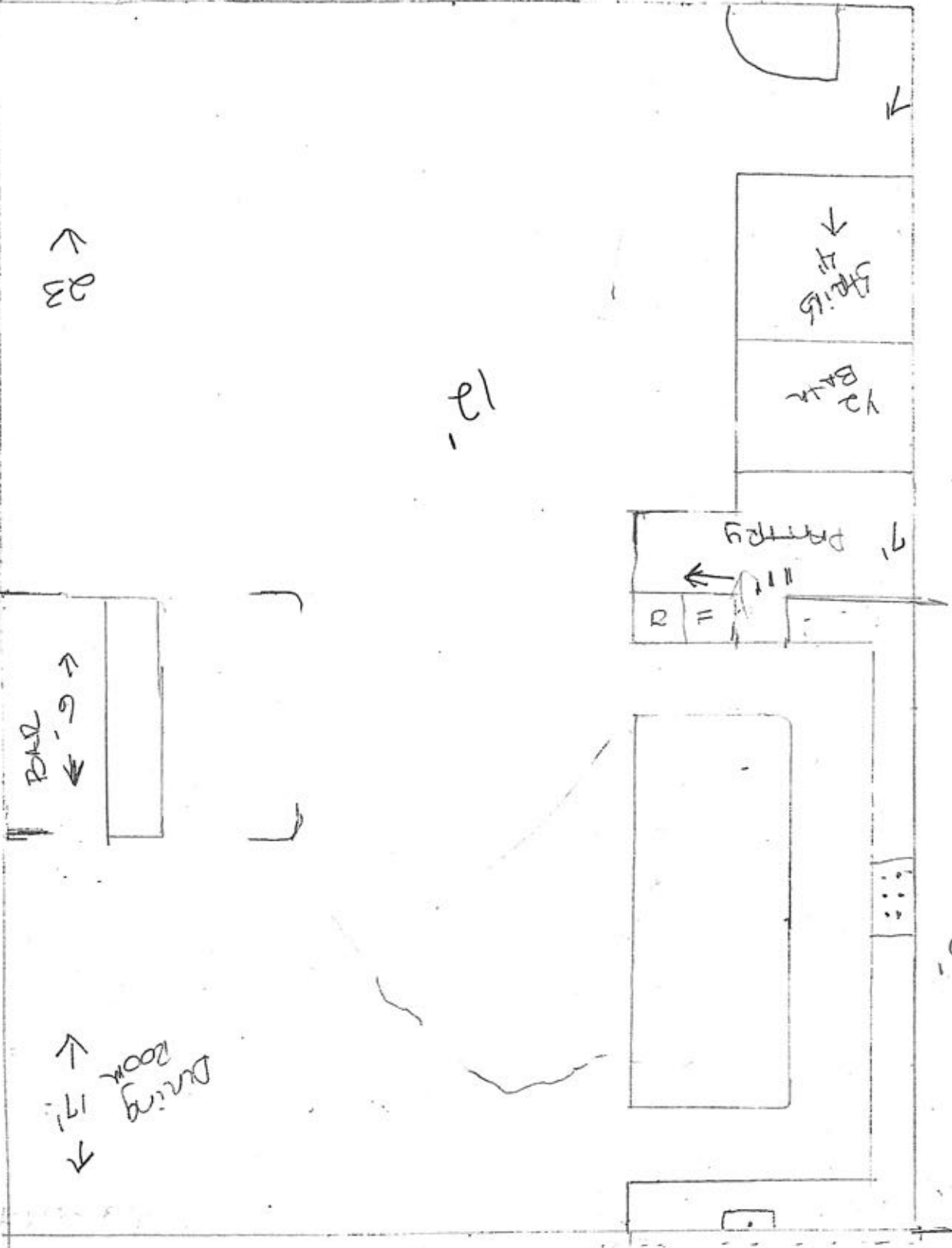
door

32

23

12

1472
46



20

N.O. LAKE SHORE HAMMOND HWY.

ST.

"C"

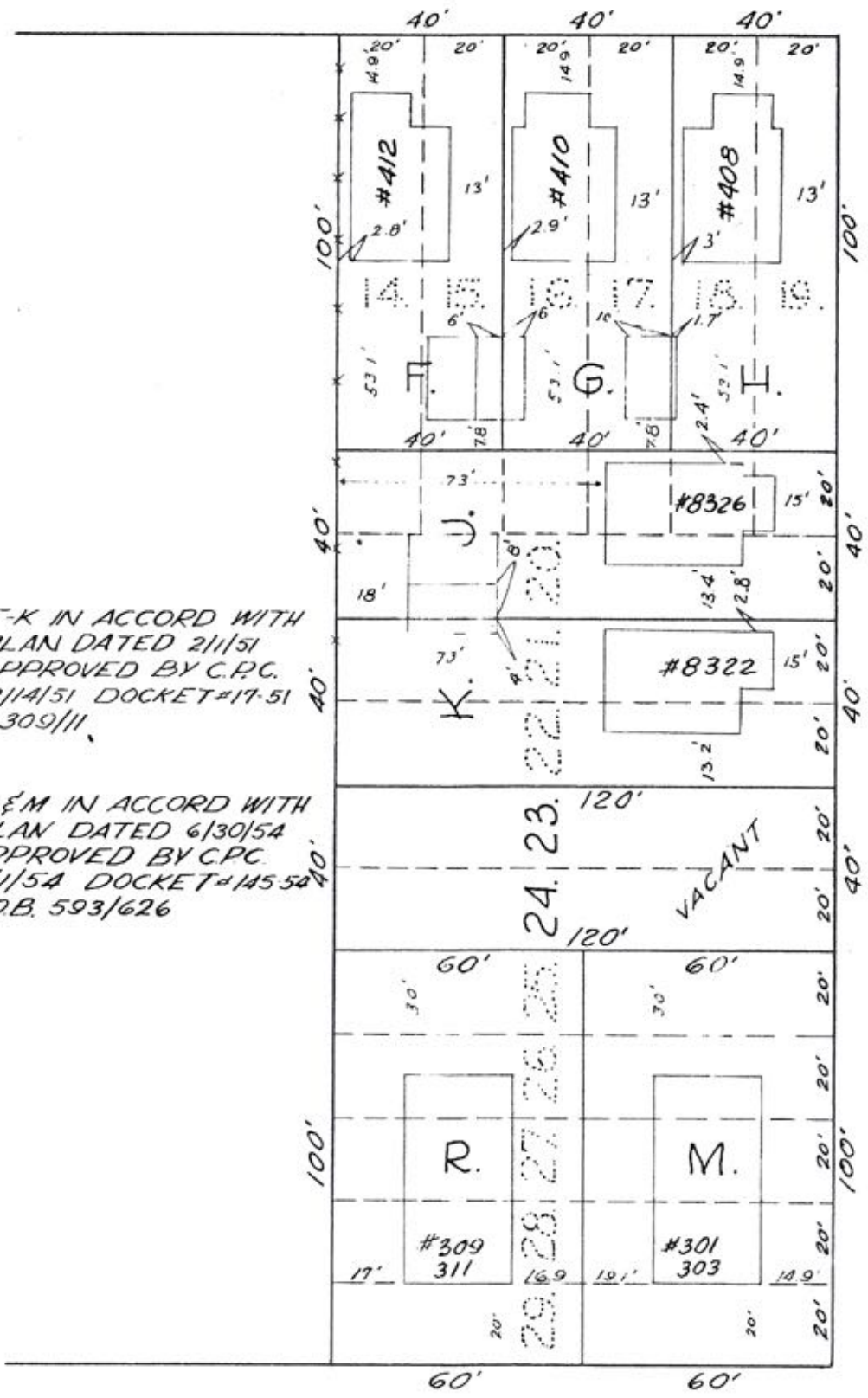
(SIDE)

F-K IN ACCORD WITH
 PLAN DATED 2/1/51
 APPROVED BY C.P.C.
 2/14/51 DOCKET #17-51
 309/111

R&M IN ACCORD WITH
 PLAN DATED 6/30/54
 APPROVED BY CPC
 7/1/54 DOCKET #145-54
 C.O.B. 593/626

ROY

AVENUE



HAY

PLACE